

F.A.P. RTE.	SECTION	COUNTY	TOTAL SHEETS	SHEET NO.
311	652-A	DUPAGE	383	1
ILLINOIS			CONTRACT NO. 60R06	

383 + 1 = 384

D-91-032-12



LOCATION OF SECTION INDICATED THUS: - [black rectangle] -

STATE OF ILLINOIS
DEPARTMENT OF TRANSPORTATION
DIVISION OF HIGHWAYS

**PROPOSED
HIGHWAY PLANS**

FAP 311 - US ROUTE 34 AT CANADIAN NATIONAL RAILROAD
SECTION 652-A
RAILROAD GRADE SEPARATION
DUPAGE COUNTY
C-91-032-12

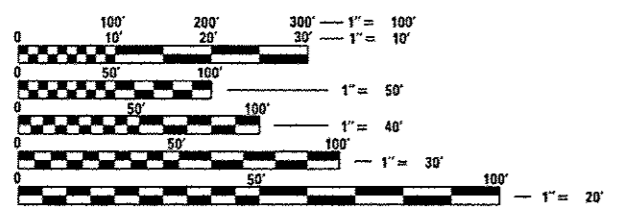
SUBSURFACE UTILITY ENGINEERING (S.U.E.)
UTILIZED ON THIS PROJECT

PROJECT LOCATED IN THE CITY OF AURORA

FOR INDEX OF SHEETS SEE SHEET NO.2

DESIGN DESIGNATION
1,900 (12) ARTERIAL (PCC-20)
SUBURBAN-STRATEGIC REGIONAL ARTERIAL

US ROUTE 34 TRAFFIC DATA:
ADT = 33,000 (2012)
ADT = 38,000 (2040)
DESIGN SPEED = 45MPH
POSTED SPEED LIMIT = 45MPH

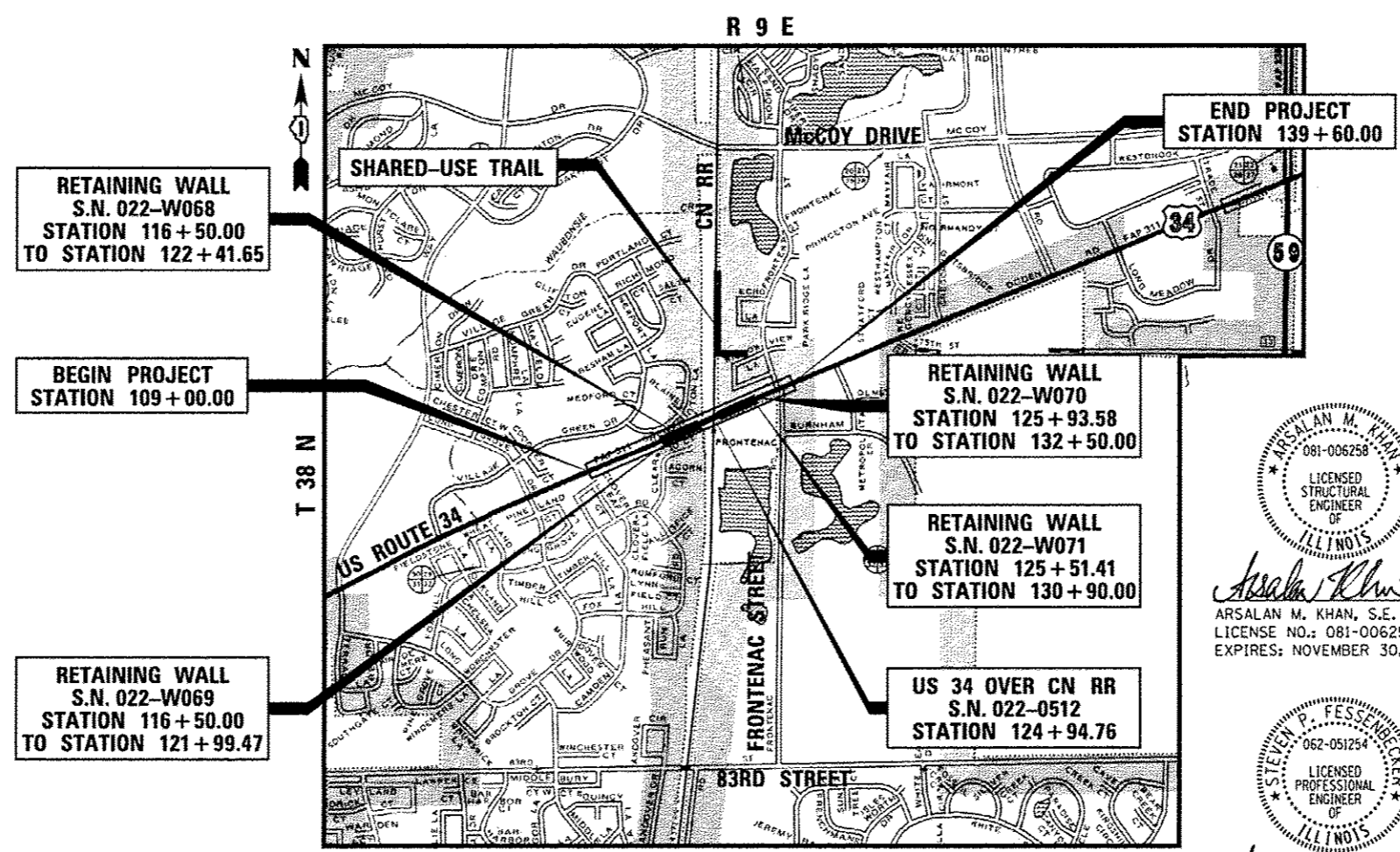


FULL SIZE PLANS HAVE BEEN PREPARED USING STANDARD ENGINEERING SCALES. REDUCED SIZED PLANS WILL NOT CONFORM TO STANDARD SCALES. IN MAKING MEASUREMENTS ON REDUCED PLANS, THE ABOVE SCALES MAY BE USED.

J.U.L.I.E.
JOINT UTILITY LOCATION INFORMATION FOR EXCAVATION
1-800-892-0123
OR 811

PROJECT MANAGER - BRIAN KUTTAB, P.E.
PROJECT ENGINEER - ADDIS ABEBAW

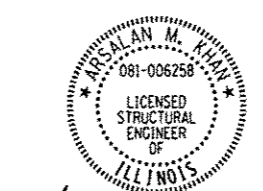
CONTRACT NO. 60R06



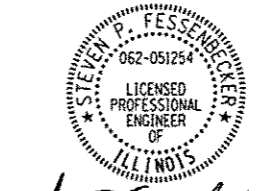
NAPERVILLE TOWNSHIP

LOCATION MAP
NOT TO SCALE

GROSS & NET LENGTH = 3,060 FT. = 0.58 MILE (US RTE 34)
= 1,220 FT. = 0.23 MILE (SHARED-USE TRAIL)



Arsalan Khan 8-15-13
ARSALAN M. KHAN, S.E.
LICENSE NO.: 081-006258
EXPIRES: NOVEMBER 30, 2014



Steven P. Fessenbecker 9-15-13
STEVEN P. FESSENBECKER, P.E.
LICENSE NO.: 062-051254
EXPIRES: NOVEMBER 30, 2013

STATE OF ILLINOIS
DEPARTMENT OF TRANSPORTATION
DIVISION OF HIGHWAYS

SUBMITTED August 16, 2013
John D. Baranzelli
DEPUTY DIRECTOR OF HIGHWAYS, REGION ONE ENGINEER
March 21, 2014
John D. Baranzelli P.E.
acting ENGINEER OF DESIGN AND ENVIRONMENT
March 21, 2014
Omer Osman P.E.
DIRECTOR OF HIGHWAYS, CHIEF ENGINEER

**PRINTED BY THE AUTHORITY
OF THE STATE OF ILLINOIS**

URS 100 S. WACKER DR., SUITE 500 TEL (312)-939-1000
CHICAGO IL, 60606 FAX (312)-939-4198

Rev.

INDEX OF SHEETS

1	COVER SHEET
2	INDEX OF SHEETS AND HIGHWAY STANDARDS
3	GENERAL NOTES
4-24	SUMMARY OF QUANTITIES
25	EXISTING TYPICAL SECTIONS
26-30	PROPOSED TYPICAL SECTIONS
31-39	SCHEDULE OF QUANTITIES
40-42	DRAINAGE SCHEDULES
43-45	ALIGNMENTS, TIES & BENCHMARKS
46-53	ROADWAY PLANS - US ROUTE 34
54-58	ROADWAY PROFILES - US ROUTE 34
59	ROADWAY PLAN - FRONTENAC STREET
60	ROADWAY PROFILE - FRONTENAC STREET
61-62	ROADWAY PLAN AND PROFILE - SHARED-USE TRAIL
63	TEMPORARY DRAINAGE SCHEDULES
64-66	TEMPORARY DRAINAGE PLAN AND PROFILES
67-82	STAGING AND TRAFFIC CONTROL PLANS
83-88	EROSION AND SEDIMENT CONTROL PLANS
89-91	SUBSURFACE UTILITY ENGINEERING (S.U.E.) PLANS
92-99	DRAINAGE AND UTILITY PLANS - US ROUTE 34
100-107	DRAINAGE AND UTILITY PROFILES - US ROUTE 34
108	DRAINAGE AND UTILITY PLAN - FRONTENAC STREET
109	DRAINAGE AND UTILITY PROFILE - FRONTENAC STREET
110-116	WATER MAIN PLANS
117-134	PLATS OF HIGHWAYS
135	INTERSECTION DETAILS
136-142	PAVEMENT MARKING AND SIGNING PLANS
143-148	LANDSCAPING PLANS
149-163	TRAFFIC SIGNAL PLANS
164-280	STRUCTURE PLANS
281	NOISE WALL TYPICAL SECTIONS AND NOTES
282-289	NOISE WALL PLAN AND PROFILES
290-293	NOISE WALL SOIL BORINGS
294	OUTLET CONTROL STRUCTURE DETAIL
295	MISCELLANEOUS ELECTRICAL DETAILS
296	BD01 - DRIVEWAY DETAILS - DISTANCE BETWEEN R.O.W. AND CURB OR EDGE GREATER THAN OR EQUAL TO 15' (4.5 m)
297	BD07 - STORM SEWER CONNECTION TO EXISTING SEWER
298	BD32 - BUTT JOINTS AND HMA TAPER
299	BD34 - DETAILS FOR DEPRESSED CURB & GUTTER AND SHOULDER TREATMENT AT TBT TY 1 SPL.
300	BD37 - MANHOLE TYPE A 7 FOOT DIAMETER
301	BD48 - PCC PAVEMENT ROUNDOUTS AT CURB & GUTTER
302	BD51 - BENCHING DETAIL FOR EMBANKMENT WIDENING
303	BD52 - DETAIL OF PAVEMENT SEPARATION JOINT FOR JOINTED PCC PAVEMENTS AT INTERSECTIONS
304	BM15 - SCHEDULE OF LANDSCAPING ITEMS
305	BM20 - PRUNING FOR SAFETY AND EQUIPMENT CLEARANCE
306	TC10 - TRAFFIC CONTROL AND PROTECTION FOR SIDE ROADS, INTERSECTIONS, AND DRIVEWAYS
307	TC11 - RAISED REFLECTIVE PAVEMENT MARKERS (SNOW PLOW RESISTANT)
308	TC13 - DISTRICT ONE TYPICAL PAVEMENT MARKINGS
309	TC14 - TRAFFIC CONTROL AND PROTECTION AT TURN BAYS (TO REMAIN OPEN TO TRAFFIC)
310	TC16 - PAVEMENT MARKING LETTERS AND SYMBOLS FOR TRAFFIC STAGING
311	TC22 - ARTERIAL ROAD INFORMATION SIGN
312	TC26 - DRIVEWAY ENTRANCE SIGNING
313	TS02 - DISTRICT ONE MAST ARM MOUNTED STREET NAME SIGNS
314-320	TS05 - STANDARD TRAFFIC SIGNAL DESIGN DETAILS
321	TS07 - DETECTOR LOOP INSTALLATION DETAIL FOR ROADWAY RESURFACING
322-326	CITY OF AURORA WATER MAIN PLANS (FOR INFORMATION ONLY)
327-372	CROSS SECTIONS - US ROUTE 34
373-374	CROSS SECTIONS - FRONTENAC STREET
375-383	CROSS SECTIONS - SHARED-USE TRAIL

Added BZA.

NUMBER	DESCRIPTION
000001-06	STANDARD SYMBOLS, ABBREVIATIONS AND PATTERNS
001001-02	AREAS OF REINFORCEMENT BARS
001006	DECIMAL OF AN INCH AND OF A FOOT
280001-07	TEMPORARY EROSION CONTROL SYSTEMS
420001-07	PAVEMENT JOINTS
420101-04	24' (7.2 M) JOINTED PCC PAVEMENT
420106-04	36' (10.8 M) JOINTED PCC PAVEMENT
420111-03	PCC PAVEMENT ROUNDOUTS
420401-10	BRIDGE APPROACH PAVEMENT CONNECTOR
424001-07	PERPENDICULAR CURB RAMPS FOR SIDEWALKS
424006-01	DIAGONAL CURB RAMPS FOR SIDEWALKS
424011-01	CORNER PARALLEL CURB RAMPS FOR SIDEWALKS
424021-02	DEPRESSED CORNER FOR SIDEWALKS
424026-01	ENTRANCE / ALLEY PEDESTRIAN CROSSINGS
442101-07	CLASS B PATCHES
442201-03	CLASS C AND D PATCHES
515001-03	NAME PLATE FOR BRIDGES
542301-03	PRECAST REINFORCED CONCRETE FLARED END SECTION
601001-04	SUB-SURFACE DRAINS
602001-02	CATCH BASIN, TYPE A
602011-02	CATCH BASIN, TYPE C
602301-04	INLET, TYPE A
602406-06	MANHOLE, TYPE A, 6' (1.8 M) DIAMETER
602601-03	PRECAST REINFORCED CONCRETE FLAT SLAB TOP
602701-02	MANHOLE STEPS
604001-03	FRAME AND LIDS, TYPE 1
604036-02	GRATE, TYPE 8
604091-02	FRAME AND GRATE, TYPE 24
606001-05	CONCRETE CURB TYPE B AND COMBINATION CONCRETE CURB AND GUTTER
606301-04	PC CONCRETE ISLANDS AND MEDIANS
606306-03	CORRUGATED PC CONCRETE MEDIANS
630001-10	STEEL PLATE BEAM GUARDRAIL
631031-12	TRAFFIC BARRIER TERMINAL, TYPE 6
635006-03	REFLECTOR AND TERMINAL MARKER PLACEMENT
635011-02	REFLECTOR MARKER AND MOUNTING DETAILS
643001-02	SAND MODULE IMPACT ATTENUATORS
701101-04	OFF-ROAD OPERATIONS, MULTILANE, 15' (4.5 M) TO 24" (600 MM) FROM PAVEMENT EDGE
701106-02	OFF-ROAD OPERATIONS, MULTILANE, MORE THAN 15' (4.5 M) AWAY
701422-06	LANE CLOSURE, MULTILANE, FOR SPEEDS > 45 MPH TO 55 MPH
701423-07	LANE CLOSURE, MULTILANE, WITH BARRIER, FOR SPEEDS > 45 MPH TO 55 MPH
701426-06	LANE CLOSURE, MULTILANE, INTERMITTENT OR MOVING OPERATION, FOR SPEEDS > 45 MPH
701502-06	URBAN LANE CLOSURE, 2L, 2W, WITH BIDIRECTIONAL LEFT TURN LANE
701602-07	URBAN LANE CLOSURE, MULTILANE, 2W WITH BIDIRECTIONAL LEFT TURN LANE
701606-09	URBAN LANE CLOSURE, MULTILANE, 2W WITH MOUNTABLE MEDIAN
701701-09	URBAN LANE CLOSURE, MULTILANE INTERSECTION
701801-05	LANE CLOSURE, MULTILANE 1W OR 2W CROSSWALK OR SIDEWALK CLOSURE
701901-03	TRAFFIC CONTROL DEVICES
704001-07	TEMPORARY CONCRETE BARRIER
720001-01	SIGN PANEL MOUNTING DETAILS
720006-04	SIGN PANEL ERECTION DETAILS
720011-01	METAL POSTS FOR SIGNS, MARKERS AND DELINEATORS
720016-03	MAST ARM MOUNTED STREET NAME SIGNS
728001-01	TELESCOPING STEEL SIGN SUPPORT
729001-01	APPLICATIONS OF TYPES A AND B METAL POSTS (FOR SIGNS & MARKERS)
731001-01	BASE FOR TELESCOPING STEEL SIGN SUPPORT
805001-01	ELECTRICAL SERVICE INSTALLATION DETAILS
814001-02	HANDHOLES
814006-02	DOUBLE HANDHOLES
857001-01	STANDARD PHASE DESIGNATION DIAGRAMS AND PHASE SEQUENCES
862001-01	UNINTERRUPTABLE POWER SUPPLY (UPS)
873001-02	TRAFFIC SIGNAL GROUNDING & BONDING
877001-05	STEEL MAST ARM ASSEMBLY AND POLE 16' THROUGH 55'
877002-02	STEEL MAST ARM ASSEMBLY AND POLE 56' THROUGH 75'
877006-04	STEEL MAST ARM ASSEMBLY AND POLE WITH DUAL MAST ARMS
878001-09	CONCRETE FOUNDATION DETAILS
880001-01	SPAN WIRE MOUNTED SIGNALS AND FLASHING BEACON INSTALLATION
880006-01	TRAFFIC SIGNAL MOUNTING DETAILS
886001-01	DETECTOR LOOP INSTALLATIONS
886006-01	TYPICAL LAYOUT FOR DETECTION LOOPS

Rev. 4-14-14

FILE NAME : 01-1001-25-0000-01-01.dwg



USER NAME : URS	DESIGNED : MB	REVISED :
DRAWN : KJB	CHECKED : SPF	DATE : 02/28/2014
PLOT SCALE : 100.0000 / 1 in.		
PLOT DATE : 02/28/2014		

STATE OF ILLINOIS
DEPARTMENT OF TRANSPORTATION

INDEX OF SHEETS AND HIGHWAY STANDARDS

SCALE: NTS	SHEET NO. OF SHEETS	STA. TO STA.	F.A.P. RTE. 311	SECTION 652-A	COUNTY	TOTAL SHEETS 383	SHEET NO. 2
						CONTRACT NO. 60R06	
FED. ROAD DIST. NO. 1 ILLINOIS FED. AID PROJECT							

GENERAL NOTES

BEFORE STARTING ANY EXCAVATION, THE CONTRACTOR SHALL CALL "JULIE" AT 1-800-892-0123 OR 811 FOR FIELD LOCATIONS OF BURIED ELECTRIC, TELEPHONE AND GAS FACILITIES.

ALL UTILITIES, SCHOOL DISTRICTS, LOCAL POLICE, FIRE DEPARTMENTS AND THE CITY OF AURORA ENGINEERING AND PUBLIC WORKS DEPARTMENTS SHALL BE NOTIFIED BY THE CONTRACTOR TWO WEEKS PRIOR TO THE START OF CONSTRUCTION.

THE SCALE SHOWN ON THE DRAWINGS APPLIES ONLY TO FULL SIZE PLANS AND NOT TO THE REDUCED SIZE PLANS. REDUCED SIZED PLANS CAN BE PRINTED TO SCALE FOR USE IN THE FIELD.

IN COMPLIANCE WITH THE ILLINOIS ENVIRONMENTAL PROTECTION AGENCY (I.E.P.A.) FOR A CONSTRUCTION PROJECT WHICH DISTURBS ONE ACRE OR MORE TOTAL LAND AREA, THE CONTRACTOR SHALL FOLLOW THE STORM WATER POLLUTION PREVENTION PLAN AS CONTAINED IN THE CONTRACT DOCUMENT.

WARNING SIGNS (OVERHEAD ELECTRIC) SHALL BE PLACED AT LOCATIONS OF OVERHEAD ELECTRIC LINES CROSSING THE ROADWAY. SIGNS WILL NOT BE PAID FOR SEPARATELY, BUT SHALL BE INCLUDED IN THE ITEMS OF WORK BEING PERFORMED.

WHEN DIRECTED BY THE ENGINEER, THE CONTRACTOR SHALL USE THE FOLLOWING METHOD TO ALLAY DUST AND PREVENT A NUISANCE WITHIN THE LIMITS OF THE CONSTRUCTION SITE. DUST SHALL BE CONTROLLED BY THE UNIFORM APPLICATION OF SPRINKLED WATER AND SHALL BE APPLIED ONLY WHEN DIRECTED BY THE ENGINEER, IN A MANNER MEETING HIS APPROVAL. CALCIUM CHLORIDE SHALL NOT BE USED FOR THIS PURPOSE. ALL EQUIPMENT USED FOR THIS WORK SHALL MEET WITH THE ENGINEER'S APPROVAL. THIS WORK SHALL CONSIST OF THE EXCLUSIVE CONTROL OF DUST RESULTING FROM CONSTRUCTION OPERATIONS AND IS NOT INTENDED FOR USE IN THE COMPACTION OF EARTH EMBANKMENTS, AS SPECIFIED UNDER ARTICLE 205.06 OF THE STANDARD SPECIFICATIONS. NO EXTRA COMPENSATION SHALL BE ALLOWED THE CONTRACTOR FOR THIS WORK.

THE CONTRACTOR SHALL KEEP EXISTING ADJACENT STREETS CLEAN OF DIRT, MUD, AND OTHER DEBRIS AND, WHEN NECESSARY, CLEAN SAID PAVEMENTS ON A DAILY BASIS OR WHEN DIRECTED BY THE ENGINEER. NO EXTRA COMPENSATION SHALL BE ALLOWED THE CONTRACTOR FOR THIS WORK.

EXISTING UTILITIES ARE SHOWN ON THE PLANS ACCORDING TO INFORMATION OBTAINED FROM THE LOCAL AGENCIES, OWNERS, AND FIELD SURVEYS. THE ACCURACY AND COMPLETENESS OF SAID INFORMATION IS NOT GUARANTEED. IT SHALL BE THE CONTRACTOR'S RESPONSIBILITY TO VERIFY THE EXISTENCE, NATURE AND EXACT LOCATIONS OF ALL UTILITY LINES AND APPURTENANCES WITHIN THE LIMITS OF THE IMPROVEMENTS.

THE CONTRACTOR SHALL USE ALL NECESSARY PRECAUTIONS AND PROTECTIVE MEASURES REQUIRED TO MAINTAIN EXISTING UTILITIES, SEWERS AND APPURTENANCES THAT MUST BE KEPT IN OPERATION. IN PARTICULAR, THE CONTRACTOR WILL TAKE ADEQUATE MEASURES TO PREVENT THE UNDERMINING OF UTILITIES AND SEWERS WHICH ARE STILL IN SERVICE. THIS WORK WILL NOT BE PAID FOR SEPARATELY, BUT SHALL BE INCLUDED IN THE ITEMS OF WORK BEING PERFORMED.

IT SHALL BE THE CONTRACTOR'S RESPONSIBILITY TO MAINTAIN DRAINAGE FLOWS AT ALL TIMES DURING THE PERFORMANCE OF THE WORK. METHODS USED BY THE CONTRACTOR SHALL BE SUBJECT TO APPROVAL OF THE ENGINEER. THE COST OF MAINTAINING DRAINAGE FLOWS SHALL BE INCLUDED IN THE CONTRACT.

THE STATION/OFFSET/ELEVATIONS NOTED FOR ALL DRAINAGE STRUCTURES LOCATED IN THE CURB LINE REFER TO THE POSITION OF THE ADJACENT PROPOSED EDGE OF PAVEMENT. THE CONTRACTOR SHALL BE RESPONSIBLE FOR DETERMINING THE OFFSET NECESSARY TO THE STRUCTURES TO SET THE FRAME AND GRATES IN THE PROPER LOCATION. ALL OTHER STRUCTURES ARE DIMENSIONED TO THE CENTER OF THE STRUCTURE; ELEVATION INDICATES RIM GRADES.

THE COST OF MAKING STORM SEWER CONNECTIONS TO EXISTING OR PROPOSED DRAINAGE STRUCTURES OR PIPES, OR DISCONNECTING USING PLUGS SHALL BE INCLUDED IN THE COST OF STORM SEWER BEING CONNECTED.

STORM SEWER, WATER MAIN REQUIREMENTS IS TO BE USED AT LOCATIONS WHERE:
 - HORIZONTAL SEPARATION BETWEEN THE SEWER AND WATER MAIN IS LESS THAN 10- FEET AND THE WATER MAIN INVERT IS LESS THAN 18-INCHES ABOVE THE STORM SEWER CROWN;
 -OR WHEN WATER MAIN CROSSES OVER STORM SEWER AND THE WATER MAIN INVERT IS LESS THAN 18-INCHES ABOVE THE STORM SEWER CROWN;
 -OR WHEN WATER MAIN CROSSES UNDER STORM SEWER AND THE WATER MAIN CROWN IS LESS THAN 18-INCHES UNDER THE STORM SEWER
 THE STORM SEWER SHALL BE ENCASED IN WATER MAIN QUALITY PIPE.

THE CONTRACTOR SHALL DETERMINE WHEN FLAT SLAB TOPS ARE REQUIRED ON MANHOLES AND CATCH BASINS. NO ADDITIONAL COMPENSATION WILL BE ALLOWED FOR FLAT SLAB TOPS.

"TEMPORARY FENCE" SHALL BE ERECTED ALONG THE DRIP LINE OF EXISTING TREES TO REMAIN WITHIN THE LIMITS OF CONSTRUCTION. THE RESIDENT ENGINEER SHALL INSPECT AND APPROVE THE PLACEMENT OF ALL "TEMPORARY FENCE" PRIOR TO CONSTRUCTION. AFTER TREES ARE SAFELY FENCED NOTHING IS TO BE STORED, DRIVEN, OR DISTURBED INSIDE THE FENCE. REMOVE "TEMPORARY FENCE" ONLY AFTER ALL CONSTRUCTION WORK HAS BEEN COMPLETED.

"AGGREGATE SUBGRADE IMPROVEMENT" AND "GEOTECHNICAL FABRIC FOR GROUND STABILIZATION" HAVE BEEN PROVIDED FOR IN THE CONTRACT QUANTITIES. THE ACTUAL NEED FOR THE REMOVAL AND REPLACEMENT WITH AGGREGATE SUBGRADE IMPROVEMENT AND GEOTECHNICAL FABRIC WILL BE DETERMINED IN THE FIELD AT THE TIME OF CONSTRUCTION BY THE ENGINEER. ALL POTENTIALLY UNSTABLE SOILS SHALL BE TREATED IN ACCORDANCE WITH ARTICLE 301.03 AND THE IDOT SUBGRADE STABILITY MANUAL. IF UNSTABLE AND/OR UNSUITABLE MATERIAL IS NOT ENCOUNTERED, THEN THE QUANTITIES SHALL BE DEDUCTED AND NO ADDITIONAL COMPENSATION WILL BE DUE TO THE CONTRACTOR.

10-FOOT TRANSITIONS SHALL BE USED TO MATCH PROPOSED ITEMS OF WORK TO EXISTING ITEMS IN THE FIELD, UNLESS OTHERWISE SHOWN. THE TRANSITIONS SHALL BE PAID FOR AT THE CONTRACT UNIT PRICE FOR THE ITEM OF WORK SPECIFIED.

THE CONTRACTOR SHALL MAKE ALL FULL DEPTH SAW CUTS REQUIRED FOR THE REMOVAL OF PAVEMENTS, CONCRETE CURB AND GUTTERS, SIDEWALKS AND DRIVEWAYS AS SPECIFIED, OR AS DIRECTED BY THE ENGINEER. THE COST SHALL BE CONSIDERED INCLUDED IN THE COST FOR REMOVAL OF THE SPECIFIED ITEM IN THE CONTRACT.

BENCHMARKS FOR THE PROJECT ARE DESCRIBED IN THE PLANS. ALL BEARINGS AND COORDINATES REFERENCED IN THE PLAN DRAWINGS AND ALL CONTROL COORDINATES ARE BASED ON THE ILLINOIS STATE PLANE COORDINATE SYSTEM, EAST ZONE, NAD83(2007). ALL ELEVATIONS ARE BASED ON NATIONAL GEODESIC VERTICAL DATUM 1929 (NGVD29)

THE CONTRACTOR SHALL CONTACT THE TRAFFIC CONTROL SUPERVISOR AT (847) 705-4470 A MINIMUM OF 72 HOURS IN ADVANCE OF BEGINNING WORK.

THE RESIDENT ENGINEER SHALL CONTACT MR. DON CHIARUGI, AREA TRAFFIC FIELD ENGINEER AT (847) 741-9857 A MINIMUM OF TWO WEEKS PRIOR TO PLACEMENT OF PAVEMENT MARKINGS.

ALL TEMPORARY CONCRETE BARRIER WALLS SHALL BE PINNED CONTINUOUSLY TO THE PAVEMENT (EXCLUDING BRIDGE DECKS) IN ALL SIX SLOTS IN THE SAME MANNER AS THE FIRST AND LAST SECTION OF WALL. THIS IS REQUIRED TO BE ANCHORED PER STANDARD 704001 WHEN THERE IS A HAZARD SUCH AS A FIXED OBJECT OR DROP-OFF WITHIN 3.5 FEET OF THE WALL. THIS WORK SHALL NOT BE PAID FOR SEPARATELY BUT SHALL BE INCLUDED IN THE COST OF THE TEMPORARY CONCRETE BARRIER WALL PAY ITEM.

A MINIMUM WAITING PERIOD OF 30 DAYS SHALL BE IMPLEMENTED AFTER THE COMPLETION OF THE EMBANKMENTS AND PRIOR TO PLACEMENT OF THE APPROACH SLAB. SETTLEMENT PLATFORMS SHALL BE INSTALLED AT THE MAXIMUM HEIGHT OF EACH EMBANKMENT TO MONITOR THE SETTLEMENT AND PROVIDE DATA FOR WHEN CONSTRUCTION CAN RESUME. THE COST WILL BE INCLUDED IN THE COST OF THE FURNISHED EXCAVATION.

THERE ARE EXISTING 138 KV AND 345 KV LINES WITHIN THE PROJECT LIMITS. THE CONTRACTOR NEEDS TO BE AWARE THAT NO OUTAGE OR PROTECTION CAN BE PROVIDED TO THESE FACILITIES. THE PLANS INCLUDE PAY ITEMS FOR MICRO PILES FOR THIS REASON. PER COMED AND OSHA REQUIREMENTS, WITHOUT THE ON-SITE PRESENCE OF A REPRESENTATIVE OF COMED, ALL CONTRACT ACTIVITIES MUST STAY 30 FEET IN ANY DIRECTION FROM THE 345 KV LINES AND ANY COMED CONDUCTORS AND 20 FEET FROM THE 138 KV LINES. WITH ON-SITE COMED SUPERVISION, ALL CONTRACT ACTIVITIES MUST STAY 20 FEET IN ANY DIRECTION FROM THE 345 KV LINES AND ANY COMED CONDUCTORS AND 13 FEET FROM THE 138 KV LINES.

DUE TO THE OVERHEAD 345 KV AND 138 KV ELECTRIC LINES, CONVENTIONAL METHODS USING CRANES TO ERECT THE STEEL SUPERSTRUCTURE MAY NOT BE MOST EFFECTIVE OR POSSIBLE. THE CONTRACTOR SHALL EXERCISE EXTREME CAUTION IN WORKING AROUND THESE FACILITIES AND ANY OTHER UNDERGROUND FACILITIES AND SHALL INSURE CONFLICTS WITH CRANES AND OTHER EQUIPMENT ARE AVOIDED ENTIRELY. THE COST TO COMPLY WITH THESE REQUIREMENTS WILL NOT BE PAID FOR SEPARATELY BUT SHALL BE INCLUDED IN THE COST OF HIGHWAY STRUCTURE PAY ITEMS.

ANY PROPOSED ACTIVITY IN THE VICINITY OF A HIGHWAY-RAIL GRADE CROSSING MUST ADHERE TO THE GUIDELINES SET FORTH IN THE MANUAL ON UNIFORM TRAFFIC CONTROL DEVICES (MUTCD) UNDER SECTION 6C.18: WORK IN THE VICINITY A GRADE CROSSING WHICH STATES: "WHEN GRADE CROSSINGS EXIST EITHER WITHIN OR IN THE VICINITY OF A TTC ZONE, LANE RESTRICTIONS, FLAGGING, OR OTHER OPERATIONS SHALL NOT CREATE CONDITIONS WHERE VEHICLES CAN BE QUEUED ACROSS THE TRACKS. IF THE QUEUING OF VEHICLES ACROSS THE TRACKS CANNOT BE AVOIDED, A UNIFORMED LAW ENFORCEMENT OFFICER OR FLAGGER SHALL BE PROVIDED AT THE CROSSING TO PREVENT VEHICLES FROM STOPPING ON THE TRACKS, EVEN IF AUTOMATIC WARNING DEVICES ARE IN PLACE."

FOR WORK OUTSIDE THE LIMITS OF BRIDGE APPROACH PAVEMENT, ALL REFERENCES IN THE HIGHWAY STANDARDS AND STANDARD SPECIFICATIONS FOR REINFORCEMENT, DOWEL BARS AND TIE BARS IN PAVEMENT, SHOULDERS, CURB, GUTTER, COMBINATION CURB & GUTTER AND MEDIAN, AND CHAIR SUPPORTS FOR PCC PAVEMENT, SHALL BE EPOXY COATED, UNLESS NOTED ON THE PLANS.

THE CONTRACTOR WILL NEED TO INSTALL TEMPORARY MATS OVER ENBRIDGE PIPELINE, NICOR GAS MAIN AND ONEOK PIPELINE TO PROTECT THEM FROM DAMAGE DURING CONSTRUCTION AND THE WEIGHT OF CONSTRUCTION EQUIPMENT. THE WORK REQUIRED TO PROTECT THE UTILITIES WILL NOT BE PAID FOR SEPARATELY, BUT SHALL BE INCLUDED IN THE ITEMS OF WORK BEING PERFORMED.

THE CONTRACTOR WILL BE RESPONSIBLE TO HAVE ALL RAILROAD SIGNAL WIRES LOCATED BEFORE ANY DIGGING IS DONE ON RAILROAD PROPERTY. THIS MUST BE REQUESTED 5 DAYS IN ADVANCE OF ANY DIGGING BY SUBMITTING THE PROPER FORM TO MARY ELLEN CARMODY AT MARYELLEN.CARMODY@CN.CA. FORM IS INCLUDED WITH ROE.

ALL CONSTRUCTION RELATED ACTIVITIES SHALL BE IN COMPLIANCE WITH SPECIAL PROVISIONS FOR WORK ON CN PROPERTY, INCLUDING SAFETY, SAFETY TRAINING, FLAGGING REQUIREMENTS, TEMPORARY SHORING (AS NECESSARY) ETC. ANY TEMPORARY STRUCTURE THAT AFFECTS THE CN PROPERTY OR TRACKS (E.G. SHORING) SHALL BE SUBMITTED FOR CN REVIEW AND APPROVAL. ALL PLANS THAT ARE SUBMITTED TO CN MUST BE STAMPED BY APPROPRIATE LICENSED ENGINEER AND BE RECEIVED AT LEAST 2 WEEKS PRIOR TO COMMENCEMENT OF THE WORK. NO WORK SHALL COMMENCE PRIOR TO CN WRITTEN APPROVAL.

FINAL DESIGN SPECS, PLANS, AND AS-BUILT PLANS SHALL BE SUBMITTED TO CN FOR RECORDS, IN ELECTRONIC FORMAT BOTH IN PDF AND AUTOCAD (OR EQUIVALENT) AT THE CONCLUSION OF THE PROJECT. THIS WILL NOT BE PAID FOR SEPARATELY, BUT SHALL BE INCLUDED IN THE ITEMS OF WORK BEING PERFORMED.

THE REMOVAL OF THE MODULAR BLOCK RETAINING WALL WILL BE INCLUDED IN THE COST OF EARTH EXCAVATION.

THE CONTRACTOR'S ATTENTION IS CALLED TO THE FACT THAT THE PRESERVATION OF EXISTING TREES IS OF UTMOST IMPORTANCE TO THE CITY OF AURORA. ALL TREE PROTECTION, TREE REMOVAL, PRUNING AND ROOT PRUNING SHALL BE COMPLETED BEFORE CONSTRUCTION OPERATIONS COMMENCE IN ANY AREA. AT NO TIME SHALL THE CONTRACTOR PRUNE OR REMOVE ANY TREES UNLESS SPECIFICALLY DIRECTED BY THE ENGINEER.

THE CONTRACTOR SHALL TAKE EXTRA CARE IN GRADING AND EXCAVATING NEAR TREES WHICH ARE NOT MARKED FOR REMOVAL SO AS NOT TO CAUSE INJURY TO THE ROOT SYSTEM OR TRUNKS. HAND EXCAVATION SHALL BE PERFORMED IF MAJOR ROOTS ARE PRESENT. MAJOR ROOTS OF A TREE THAT ARE TO REMAIN IN PLACE EXTENDING INTO THE EXCAVATION AREAS AT AN ELEVATION THAT WOULD INTERFERE WITH ANY PORTION OF THE PLANNED CONSTRUCTION SHALL BE SEVERED AT A POINT IMMEDIATELY OUTSIDE OF THE EXCAVATION AREA IN A MANNER THAT WILL CAUSE THE LEAST AMOUNT OF SYSTEMIC TO THE REMAINING TREE STRUCTURE. THE EXPENSE OF ANY REQUIRED HAND EXCAVATION AND/OR THE CUTTING OF MAJOR TREE ROOTS, AS DESCRIBED ABOVE, SHALL BE CONSIDERED INCIDENTAL TO THE CONTRACT LINE ITEM BEING REMOVED OR INSTALLED AT THAT LOCATION. ANY DAMAGE DONE TO EXISTING ITEMS BY THE CONTRACTOR SHALL BE REPAIRED BY THE CONTRACTOR AT THE CONTRACTOR'S OWN EXPENSE.

THE EXISTING COM ED ACCESS ROAD CANNOT BE CUT OFF/CLOSED UNTIL THE ADVANCE CONTRACT 60783 WORK IS COMPLETED AND THE NEW COM ED ACCESS ROAD IS COMPLETED AND OPERATIONAL.

WHENEVER THE PAY ITEM DESCRIPTION IN THE PLANS STATES: PARAPET RAILING, IT IS INTENDED TO MEAN: PARAPET RAILING, SPECIAL.

WHENEVER THE PAY ITEM DESCRIPTION IN THE PLANS STATES: BICYCLE RAILING, IT IS INTENDED TO MEAN: BICYCLE RAILING, SPECIAL.

WHENEVER THE PAY ITEM DESCRIPTION IN THE PLANS STATES: BRIDGE FENCE RAILING (SIDEWALK), IT IS INTENDED TO MEAN: BRIDGE FENCE RAILING (SPECIAL).

FILE NAME : D:\1001_2536387_05_34.ctb; C:\Program Files\Autodesk\AutoCAD 2014\AutoCAD.exe



USER NAME * URS	DESIGNED - MB	REVISED - 04/14/2014 SPF
PLOT SCALE * 1/8"=1'-0"	DRAWN - KJB	REVISED -
PLOT DATE * 4/14/2014	CHECKED - SPF	REVISED -
	DATE - 4/14/2014	REVISED -

STATE OF ILLINOIS
DEPARTMENT OF TRANSPORTATION

GENERAL NOTES

SCALE: NTS SHEET NO. OF SHEETS STA. TO STA.

F.A.P. RTE.	SECTION	COUNTY	TOTAL SHEETS	SHEET NO.
311	652-A	DUPAGE	383	3
CONTRACT NO. 60R06			ILLINOIS FED. AID PROJECT	

CODE NO.	ITEM	UNIT	TOTAL QUANTITY	CONSTRUCTION CODE							TRAFFIC SIGNALS	SHARED-USE TRAIL	100 % AURORA	
				67% CANADIAN NATIONAL RAILROAD 33% STATE					67% CN 23% STATE 10% AURORA	80% STATE 20% FVPD +				
				ROADWAY	BRIDGE	RETAINING WALLS			NOISE WALL	0021				0028
				0001	0008	0040			0040	URBAN				URBAN
URBAN	URBAN	URBAN			URBAN	URBAN	URBAN	URBAN						
				S. N. 022-0512	S. N. 022-W068	S. N. 022-W069	S. N. 022-W070	S. N. 022-W071						
50200100	STRUCTURE EXCAVATION	CU YD	8508		1448	1762	1324	1849	2125					
50300225	CONCRETE STRUCTURES	CU YD	7842.1		2340.3	1220.8	1114.1	1543.2	1623.7					
50300255	CONCRETE SUPERSTRUCTURE	CU YD	1228.7		1228.7									
50300260	BRIDGE DECK GROOVING	SO YD	2033		2033									
50300285	FORM LINER TEXTURED SURFACE	SO FT	39784		3159	8525	7278	10116	10706					
50300300	PROTECTIVE COAT	SO YD	4915		4915									
50500305	ERECTING STRUCTURAL STEEL	L SUM	1		1									
50500505	STUD SHEAR CONNECTORS	EACH	19484		19008	159	173	144						
50800105	REINFORCEMENT BARS	POUND	1,401,470		197,600	292,740	217,310	327,690	366,130					
50800205	REINFORCEMENT BARS, EPOXY COATED	POUND	1,280,720		507,780	174600	159,810	212070	226,460					
50800515	BAR SPLICERS	EACH	1350		1350									
51500100	NAME PLATES	EACH	5		1	1	1	1	1					
* 51603000	DRILLED SHAFT IN SOIL	CU YD	6069		1092	1181	969	1373	1454					
* 51604000	DRILLED SHAFT IN ROCK	CU YD	194		59	25	23	41	46					

A

* SPECIALTY ITEM

+ FVPD = FOX VALLEY PARK DISTRICT

CN = CANADIAN NATIONAL RAILROAD

Rev. 4-10-14



USER NAME * URS	DESIGNED - MB	REVISED -
DRAWN - KJB	REVISIONS -	
CHECKED - SPF	REVISIONS -	
DATE - 2/11/2014	REVISIONS -	

STATE OF ILLINOIS
DEPARTMENT OF TRANSPORTATION

SUMMARY OF QUANTITIES

SCALE: SHEET NO. OF SHEETS STA. TO STA.

F.A.P. RTE.	SECTION	COUNTY	TOTAL SHEETS	SHEET NO.
311	652-A	DUPAGE	383	8
CONTRACT NO. 60R06				
FED. ROAD DIST. NO. 1 ILLINOIS FED. AID PROJECT				

FILE NAME: D:\1001_23368367_05_34.ctb at CH P:\2\Drawings\Roadway\Contract\10168R06_Sht_500.dgn

CODE NO.	ITEM	UNIT	TOTAL QUANTITY	CONSTRUCTION CODE							67% CN 23% STATE 10% AURORA	80% STATE 20% FVPD +	100% AURORA			
				ROADWAY	BRIDGE	RETAINING WALLS				NOISE WALL				TRAFFIC SIGNALS	SHARED-USE TRAIL	
				0001	0008	0040				0040				0021	0028	0043
				URBAN	URBAN	URBAN				URBAN				URBAN	URBAN	URBAN
		S. N. 022-0512		S. N. 022-W068		S. N. 022-W069		S. N. 022-W070		S. N. 022-W071						
* B2006316	TREE, SYRINGA RETICULATA IVORY SILK (IVORY SILK JAPANESE TREE LILAC), 2" CALIPER, TREE FORM, BALLED AND BURLAPPED	EACH	10	10												
* B2010070	TREE, CLADRASTIS KENTUCKEA (AMERICAN YELLOWWOOD), 2" CALIPER, BALLED AND BURLAPPED	EACH	9	9												
* D2002472	EVERGREEN, PINUS FLEXILIS VANDERWOLF'S PYRAMID (VANDERWOLF'S PYRAMID LIMBER PINE), 6' HEIGHT, BALLED AND BURLAPPED	EACH	15								15					
* E2002066	VINE-CAMPSIS RADICANS (TRUMPET VINE), 1-GALLON POT	EACH	18	18												
* E2021061	VINE-PARTHENOCISSUS QUINQUEFOLIA ENGEL MANNII (ENGELMANNII VIRGINIA CREEPER), 1-GALLON POT	EACH	2054	2054												
* K0029634	WEED CONTROL, PRE-EMERGENT GRANULAR HERBICIDE	POUND	25	20							5					
X0301423	NOISE ABATEMENT WALL, GROUND MOUNTED	SO FT	42033							42033						
X0321963	MICRO-PILES	EACH	92		92											
X0323149	TEMPORARY MECHANICALLY STABILIZED EARTH RETAINING WALL	SO FT	20659			9084		11575								
X0323433	MICROPILE PROOF LOAD TEST	EACH	2		2											
X0324455	DRILLING AND SETTING SOLDIER PILES (IN SOIL)	CU FT	5056			1773	1728	1555								
* X0325003	REMOVE EXISTING VALVE AND VAULT	EACH	2										2			
X0325714	FLASHING BEACON, POST MOUNTED, SOLAR POWERED INSTALLATION	EACH	1	1												
X0327036	BIKE PATH REMOVAL	SO YD	1840	1840												

FILE NAME = D:\1001_25368381_05_34.ctb P:\2\0-reming\Roadway\General\10168186-Shr-500.dgn

* SPECIALTY ITEM + FVPD = FOX VALLEY PARK DISTRICT CN = CANADIAN NATIONAL RAILROAD

Rev. 4-17-14



USER NAME - URS	DESIGNED - MB	REVISED -
PLOT SCALE - 1/8"=1'-0"	DRAWN - KJB	REVISED -
PLOT DATE - 2/11/2014	CHECKED - SPF	REVISED -
	DATE - 2/11/2014	REVISED -

STATE OF ILLINOIS
DEPARTMENT OF TRANSPORTATION

SUMMARY OF QUANTITIES

SCALE:	SHEET NO.	OF	SHEETS	STA.	TO	STA.
--------	-----------	----	--------	------	----	------

F.A.P. RTE.	SECTION	COUNTY	TOTAL SHEETS	SHEET NO.
311	652-A	DUPAGE	383	21
FED. ROAD DIST. NO. 1 ILLINOIS FED. AID PROJECT			CONTRACT NO. 60R06	

CONSTRUCTION CODE

67% CANADIAN NATIONAL RAILROAD 33% STATE

67% CN 23% STATE
10% AURORA

80% STATE
20% FVPD +

CODE NO.	ITEM	UNIT	TOTAL QUANTITY	ROADWAY					BRIDGE					RETAINING WALLS					NOISE WALL	TRAFFIC SIGNALS	SHARED-USE TRAIL
				0001		0008		0040			0040		0021	0028							
				URBAN		URBAN		URBAN			URBAN	URBAN									
				S. N. 022-0512	S. N. 022-W068	S. N. 022-W069	S. N. 022-W070	S. N. 022-W071													
X0322795	REMOVE AND RELOCATE EXISTING MONUMENT	EACH	1	1																	
Ø 20076600	TRAINEES	HOUR	4000	4000																	
Ø 20076604	TRAINEES - TRAINING PROGRAM GRADUATE	HOUR	4000	4000																	

FILE NAME = D:\1001_25368287.LS 34 at EN Plc\Drawings\Roadway\General\10182806-Strc-500.dgn

* SPECIALTY ITEM **Ø0042**

+ FVPD = FOX VALLEY PARK DISTRICT

CN = CANADIAN NATIONAL RAILROAD

Rev. 4-10-14

Rev.



USER NAME	* URS	DESIGNED	- MB	REVISED	-
DRAWN	- KJB	CHECKED	- SPF	REVISED	-
DATE	- 2/11/2014	DATE	- 2/11/2014	REVISED	-

STATE OF ILLINOIS
DEPARTMENT OF TRANSPORTATION

SUMMARY OF QUANTITIES


SCALE: SHEET NO. OF SHEETS STA. TO STA.

F.A.P. RTE.	SECTION	COUNTY	TOTAL SHEETS	SHEET NO.
311	652-A	DUPAGE	383	24
CONTRACT NO. 60R06			FED. ROAD DIST. NO. 1 ILLINOIS FED. AID PROJECT	

SUGGESTED STAGES OF CONSTRUCTION AND TRAFFIC CONTROL

THE PROPOSED IMPROVEMENTS ALONG US ROUTE 34 SHALL BE ACCOMPLISHED ACCORDING TO THE SUGGESTED STAGES OF CONSTRUCTION AND TRAFFIC CONTROL AS SHOWN ON THE PLANS AND DIRECTED BY THE ENGINEER. THE CONTRACTOR MAY MODIFY THE SUGGESTED TRAFFIC CONTROL PLANS TO MEET CONSTRUCTION NEEDS BUT NOT AT THE EXPENSE OF PUBLIC SAFETY OR CONVENIENCE. ANY CHANGES TO THE TRAFFIC CONTROL PLAN SHALL BE SUBMITTED TO THE ENGINEER, THE CN RR, AND THE ICC FOR APPROVAL.

THE CONTRACTOR MUST MAINTAIN A MINIMUM OF ONE THROUGH LANE IN EACH DIRECTION THROUGHOUT THE PROJECT AREA AT ALL TIMES.

~~THE CONTRACTOR SHALL MAINTAIN TWO LANES OF TRAFFIC IN EACH DIRECTION FOR THE WINTER LANE CONFIGURATION FROM DECEMBER 1 THROUGH APRIL 30.~~ 

THE CONTRACTOR MUST MAINTAIN PEDESTRIAN PASSAGE ALONG AT LEAST ONE SIDE OF THE HIGHWAY THROUGHOUT THE PROJECT AREA AT ALL TIMES.

TEMPORARY BARRIER WALL SHALL BE CONTINUOUSLY PINNED TO THE PAVEMENT ALONG THE TRAFFIC SIDE WHEREVER A DROP OFF, FIXED OBJECT, OR OTHER HAZARD EXISTS WITHIN 3.5 FEET OF THE WALL.

PRE-STAGE

1. COORDINATE UTILITIES ADJUSTED BY OTHERS BEFORE CONSTRUCTION OF PRE STAGE WORK.
2. COORDINATE RELOCATION OF GRADE CROSSING WARNING EQUIPMENT BY CN RAILROAD.
3. INSTALL AND ACTIVATE THE TEMPORARY TRAFFIC SIGNALS AT THE INTERSECTION OF IL ROUTE 34 AND FRONTENAC STREET. THE EXISTING SIGNALS SHALL BE TURNED OFF AT THE SAME TIME THAT THE TEMPORARY SIGNALS ARE ACTIVATED.
4. REMOVE EXISTING SIGNAL POLES AND EQUIPMENT.
5. REMOVE CONFLICTING PAVEMENT MARKINGS AND RAISED REFLECTIVE PAVEMENT MARKERS.
6. PLACE ALL CONSTRUCTION SIGNS, TEMPORARY PAVEMENT MARKINGS AND BARRICADES.
7. SHIFT TRAFFIC AS INDICATED
8. REMOVE EXISTING BARRIER MEDIANS, CURB AND GUTTER, SIDEWALKS, DRIVEWAYS AND TREES IN AREAS REQUIRING TEMPORARY PAVEMENT AND TEMPORARY PAVEMENT.
9. PLACE TEMPORARY DRAINAGE STRUCTURES AND TEMPORARY STORM SEWER.
10. PLACE TEMPORARY PAVEMENT AT LOCATIONS SHOWN ON THE PLANS.
11. ESTABLISH A WORK ZONE SPEED LIMIT OF 45 MPH PER STANDARD 701422. SIGNAGE SHALL BE PLACED BASED ON THE CONFIGURATION OF TRAFFIC, (LANE CLOSURES, SHIFTS, LANE WIDTH REDUCTIONS) AS DIRECTED BY THE ENGINEER FOR PERMANENT LANE CLOSURES.
12. INSTALL TEMPORARY BARRIER WALL WHERE NEEDED TO AVOID VIOLATING DROP OFF POLICY IN FUTURE STAGES.

STAGE 1

1. PLACE TEMPORARY PAVEMENT MARKINGS, RELOCATE BARRICADES, ADJUST TEMPORARY SIGNING AND TEMPORARY TRAFFIC SIGNALS.
2. CN RAILROAD TO MODIFY AND RELOCATE GRADE CROSSING WARNING EQUIPMENT.
3. SHIFT TRAFFIC AS INDICATED FOR STAGE 1.
4. REMOVE EXISTING PAVEMENT, CURB AND GUTTER AND SIDEWALK ON THE NORTH SIDE OF US ROUTE 34.
5. CONSTRUCT THE CAST IN PLACE RETAINING WALL, TEMPORARY MECHANICALLY STABILIZED EARTH RETAINING WALL, GRANULAR BACKFILL AND EMBANKMENT.
6. CONSTRUCT THE NORTH HALF OF THE BRIDGES.
7. CONSTRUCT STORM SEWER, PCC PAVEMENT, TEMPORARY PAVEMENT, CURB AND GUTTER, BARRIER WALL AND SIDEWALK ON THE NORTH SIDE OF US ROUTE 34.

STAGE 1A FRONTENAC STREET

1. REMOVE CONFLICTING PAVEMENT MARKINGS AND PLACE TEMPORARY PAVEMENT MARKINGS, RELOCATE BARRICADES, ADJUST TEMPORARY SIGNING AND TEMPORARY TRAFFIC SIGNALS.
2. SHIFT TRAFFIC AS INDICATED FOR STAGE 1A.
3. CONSTRUCT STORM SEWER AND PAVEMENT ON FRONTENAC STREET.

STAGE 1B FRONTENAC STREET

1. REMOVE CONFLICTING PAVEMENT MARKINGS AND PLACE TEMPORARY PAVEMENT MARKINGS, RELOCATE BARRICADES, ADJUST TEMPORARY SIGNING AND TEMPORARY TRAFFIC SIGNALS.
2. SHIFT TRAFFIC AS INDICATED FOR STAGE 1B.
3. CONSTRUCT STORM SEWER AND PAVEMENT ON FRONTENAC STREET.

STAGE 1C FRONTENAC STREET

1. REMOVE CONFLICTING PAVEMENT MARKINGS AND PLACE TEMPORARY PAVEMENT MARKINGS, RELOCATE BARRICADES, ADJUST TEMPORARY SIGNING AND TEMPORARY TRAFFIC SIGNALS.
2. SHIFT TRAFFIC AS INDICATED FOR STAGE 1C.
3. CONSTRUCT CURB AND GUTTER ON FRONTENAC STREET.

STAGE 2

1. REMOVE CONFLICTING PAVEMENT MARKINGS AND PLACE TEMPORARY PAVEMENT MARKINGS, RELOCATE BARRICADES, ADJUST TEMPORARY SIGNING AND TEMPORARY TRAFFIC SIGNALS.
2. SHIFT TRAFFIC AS INDICATED FOR STAGE 2.
3. CN RAILROAD TO DEACTIVATE AND REMOVE GRADE CROSSING WARNING EQUIPMENT.
4. REMOVE EXISTING PAVEMENT, CURB AND GUTTER AND SIDEWALK ON THE SOUTH SIDE OF US ROUTE 34.
5. CONSTRUCT THE CAST IN PLACE RETAINING WALL, GRANULAR BACKFILL AND EMBANKMENT.
6. CONSTRUCT THE SOUTH HALF OF THE BRIDGES.
7. CONSTRUCT STORM SEWER, PCC PAVEMENT, CURB AND GUTTER, BARRIER WALL AND HMA PAVEMENT ON THE NORTH SIDE OF US ROUTE 34.

STAGE 2A FRONTENAC STREET

1. REMOVE CONFLICTING PAVEMENT MARKINGS AND PLACE TEMPORARY PAVEMENT MARKINGS, RELOCATE BARRICADES, ADJUST TEMPORARY SIGNING AND TEMPORARY TRAFFIC SIGNALS.
2. SHIFT TRAFFIC AS INDICATED FOR STAGE 2A.
3. CONSTRUCT STORM SEWER AND PAVEMENT ON FRONTENAC STREET.

STAGE 2B FRONTENAC STREET

1. REMOVE CONFLICTING PAVEMENT MARKINGS AND PLACE TEMPORARY PAVEMENT MARKINGS, RELOCATE BARRICADES, ADJUST TEMPORARY SIGNING AND TEMPORARY TRAFFIC SIGNALS.
2. SHIFT TRAFFIC AS INDICATED FOR STAGE 2B.
3. CONSTRUCT CURB AND GUTTER ON FRONTENAC STREET.

STAGE 2C FRONTENAC STREET

1. REMOVE CONFLICTING PAVEMENT MARKINGS AND PLACE TEMPORARY PAVEMENT MARKINGS, RELOCATE BARRICADES, ADJUST TEMPORARY SIGNING AND TEMPORARY TRAFFIC SIGNALS.
2. SHIFT TRAFFIC AS INDICATED FOR STAGE 2C.
3. CONSTRUCT STORM SEWER AND PAVEMENT ON FRONTENAC STREET.

STAGE 3

1. REMOVE CONFLICTING PAVEMENT MARKINGS AND PLACE TEMPORARY PAVEMENT MARKINGS, RELOCATE BARRICADES, ADJUST TEMPORARY SIGNING AND TEMPORARY TRAFFIC SIGNALS.
2. SHIFT TRAFFIC AS INDICATED FOR STAGE 3.
3. CONSTRUCT TURN LANES AND MEDIANS ON US ROUTE 34.
4. RESTORE AREAS BEHIND THE CURB AND GUTTER.
5. COMPLETE LANDSCAPING.
6. PLACE PERMANENT PAVEMENT MARKINGS, RAISED REFLECTIVE PAVEMENT MARKINGS AND SIGNS.
7. INSTALL AND ACTIVATE THE TRAFFIC SIGNALS AT THE INTERSECTION OF US ROUTE 34 AND FRONTENAC STREET. THE TEMPORARY TRAFFIC SIGNALS WILL BE TURNED OFF AT THE SAME TIME THE PERMANENT SIGNALS ARE ACTIVATED.
8. REMOVE CONSTRUCTION SIGNS AND OPEN ALL LANES TO TRAFFIC.

FILE NAME : 0611001.25368387.US.34 at CN Pr2VDr-ar-naga\Roadway\HOT\0181808-34a-Staging-Notes.dgn



USER NAME : URS	DESIGNED : MB	REVISED :
PLOT SCALE : 100.0000 ' / 1"	DRAWN : KJB	REVISED :
PLOT DATE : 02/28/2014	CHECKED : SPF	REVISED :
	DATE : 02/28/2014	REVISED :

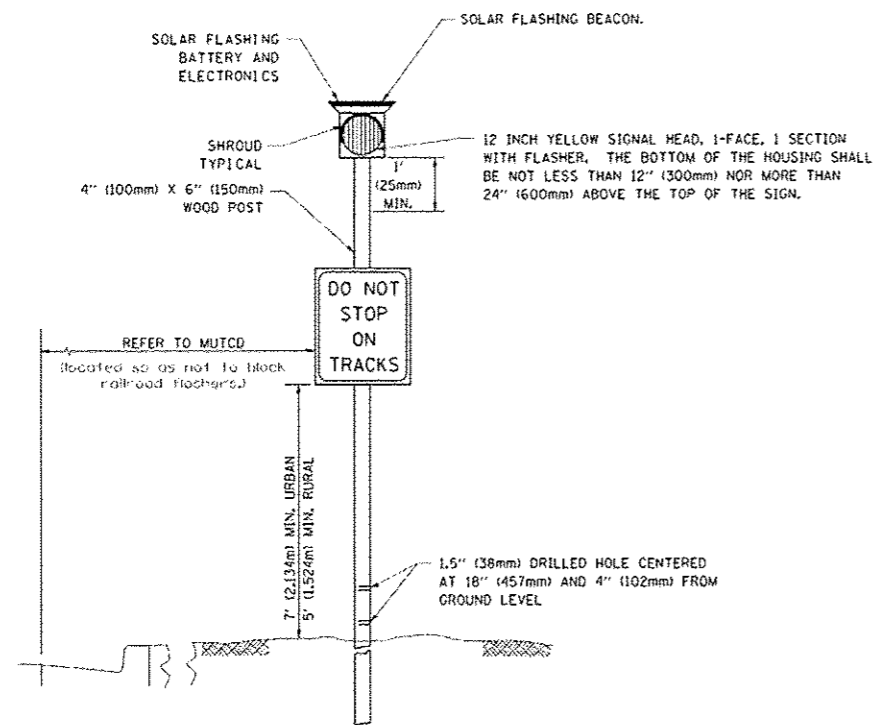
STATE OF ILLINOIS
DEPARTMENT OF TRANSPORTATION

STAGING AND TRAFFIC CONTROL NOTES

SCALE: SHEET NO. OF SHEETS STA. TO STA.

Rev. 4-10-14

F.A.P. RTE.	SECTION	COUNTY	TOTAL SHEETS	SHEET NO.
311	652-A	DUPAGE	383	67
FED. ROAD DIST. NO. 1 ILLINOIS			CONTRACT NO. 60R06	
FED. AID PROJECT				



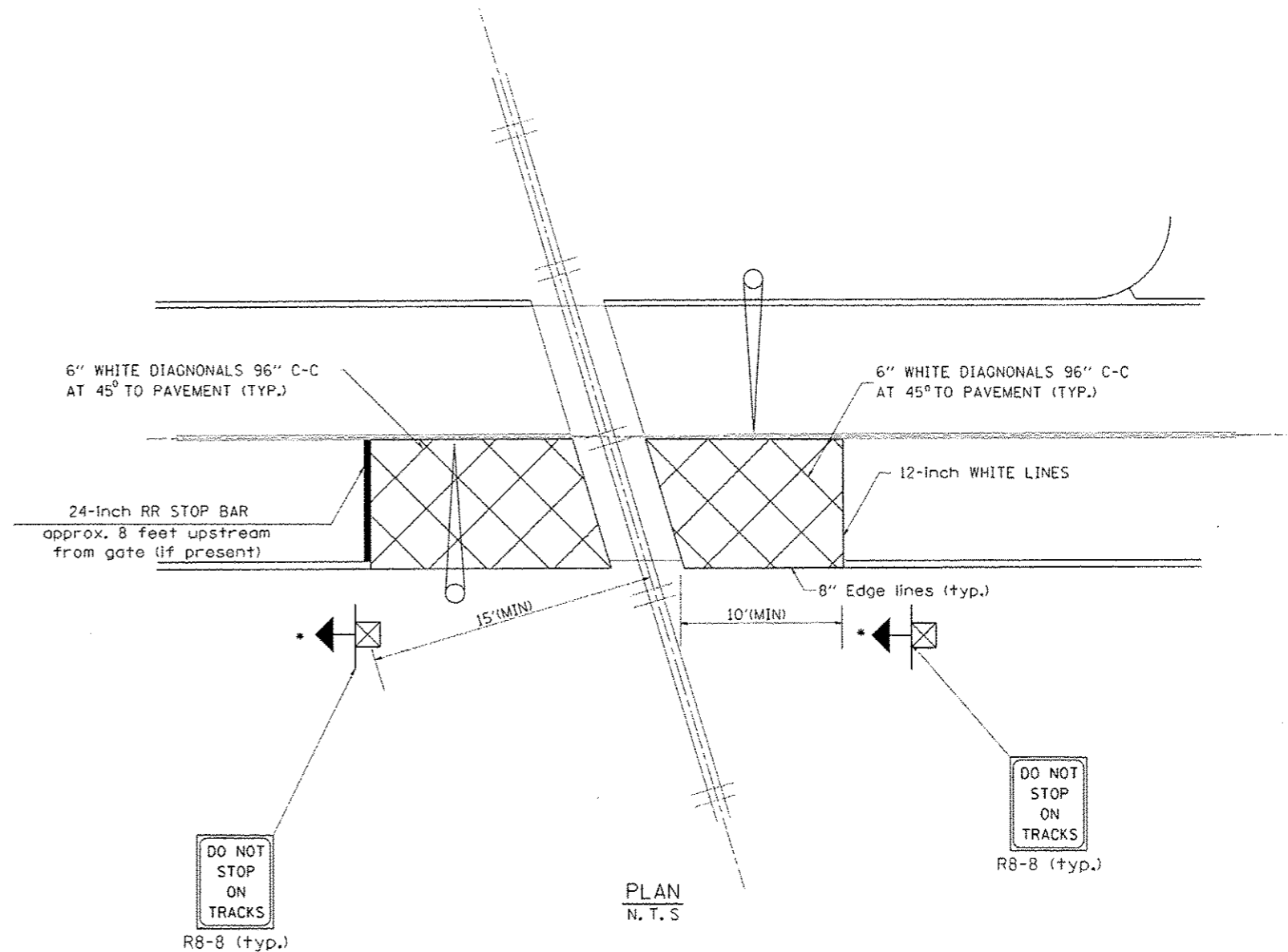
POST MOUNTED SOLAR FLASHER

N. T. S

NOTE: 4"x6"x12' Wood Posts (Breakaway) with R8-8 (24"x30") signs shall be installed in advance of the solar flashers final assembly and activation. At locations where flashing beacons are not installed, metal posts which are approved by the Road Authority may be utilized to mount the signs.

FLASHER SIGNAL LEGEND

	PROPOSED	EXISTING
SERVICE INSTALLATION	■	□
12" SIGNAL HEAD (LED)	➔	➔
WOOD POST, 4" x 6"	⊗	⊗ "E"
CONDUIT IN GROUND OR UNIT DUCT IN TRENCH	---	====
HANDHOLE	▣	▣
HEAVY-DUTY HANDHOLE	H	H "E"
ELECTRICAL POLE	●	⊕
GROUND ROD	⚡	⚡
SIGNAL FACE WITH BACKPLATE	R	R
JUNCTION BOX - STAINLESS STEEL	⊙	⊙ "E"
TRANSFORMER	T	T "E"

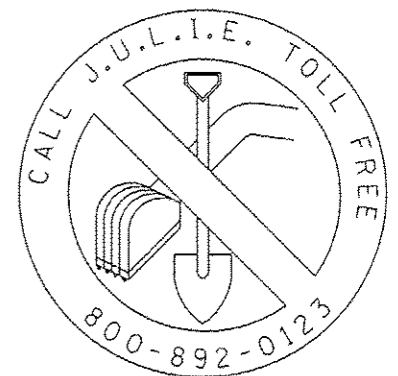


PLAN
N. T. S

* Distance to post is measured perpendicular from the center of rail (typ.)

NOTES:

1. Pavement markings will be coordinated for same day installation with flashers.
2. The traffic control devices, the type of devices and pavement marking shown on this sheet are for information only. The exact application shall be as directed by ICC or Road Authority.



Added sheet 4-14-14

FILE NAME *	USER NAME * karthikeyan	DESIGNED -	REVISED - 02-25-11	STATE OF ILLINOIS DEPARTMENT OF TRANSPORTATION	TYPICAL SUPPLEMENTAL SIGNINGS, PAVEMENT MARKING AND FLASHING BEACON INSTALLATION AT RAILROAD CROSSING. (SUBJECT TO ROAD AUTHORITY APPROVAL)	F.A.P. RTE.	SECTION	COUNTY	TOTAL SHEETS	SHEET NO.
CP: p:\work\sp\std\k\karthikeyan\bc\0211261	STAFF NO. Inquired, v. Rubin	DRAWN -	REVISED -			311	652-A	DUPAGE	383	82A
PLCT SCALE * 48/0999 1/2 IN.	PLCT DATE * 8/4/2011	CHECKED -	REVISED -			CONTRACT NO. 60R06				
						SCALE: NONE	SHEET NO. 2 OF 2 SHEETS	STA.	TO STA.	FED. ROAD DIST. NO. 1 ILLINOIS FED. AID PROJECT