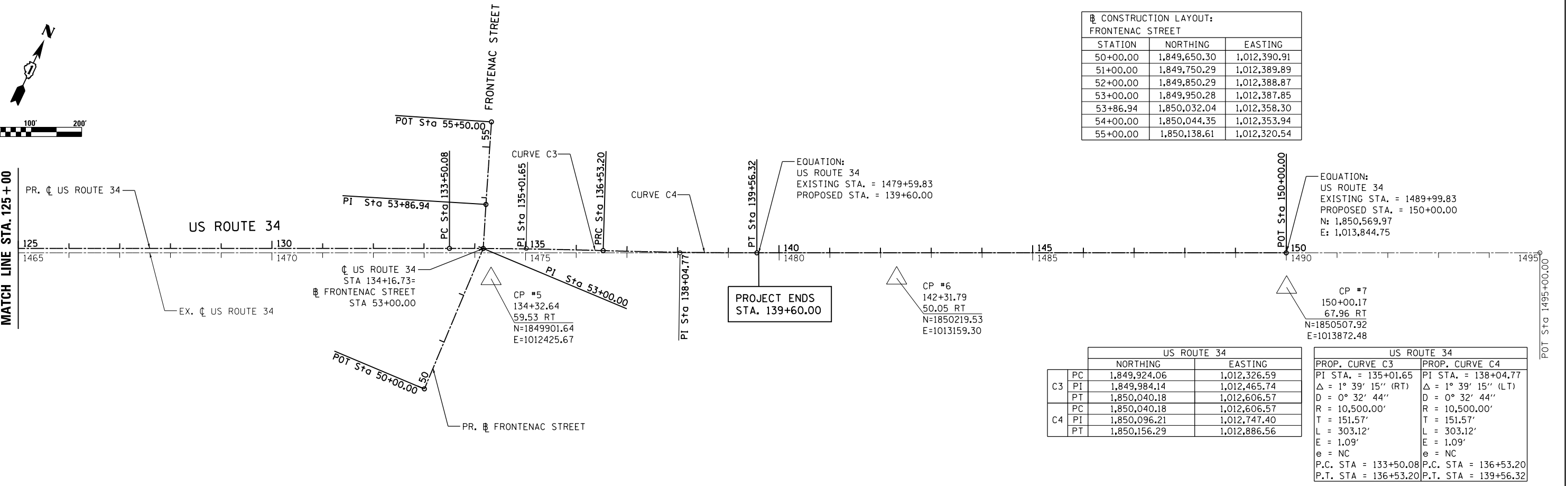
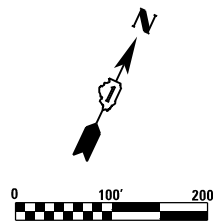
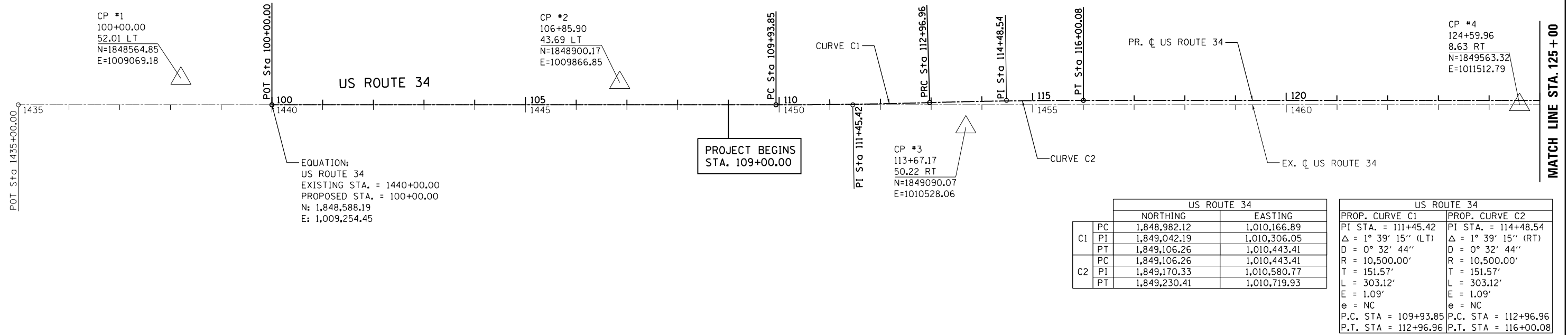
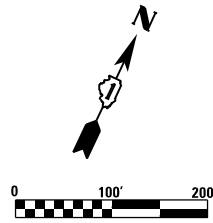


NOTE: BENCHMARKS FOR THE PROJECT ARE DESCRIBED IN THE PLANS. ALL BEARINGS AND COORDINATES REFERENCED IN THE PLAN DRAWINGS AND ALL CONTROL COORDINATES ARE BASED ON THE ILLINOIS STATE PLANE COORDINATE SYSTEM, EAST ZONE, NAD83(2007). ALL ELEVATIONS ARE BASED ON NATIONAL GEODESIC VERTICAL DATUM 1929 (NGVD29).



CONSTRUCTION LAYOUT: FRONTENAC STREET		
STATION	NORTHING	EASTING
50+00.00	1,849,650.30	1,012,390.91
51+00.00	1,849,750.29	1,012,389.89
52+00.00	1,849,850.29	1,012,388.87
53+00.00	1,849,950.28	1,012,387.85
53+86.94	1,850,032.04	1,012,358.30
54+00.00	1,850,044.35	1,012,353.94
55+00.00	1,850,138.61	1,012,320.54

FILE NAME = Q:\100T_25368367_US_34.ctb; P:\Drawings\Roadway\11\11gmnt\016R06-Sht-A\11gm_001.dgn



USER NAME = URS	DESIGNED - MB	REVISED -
DRAWN - KJB	REVISIONS -	
PLOT SCALE = 200.0000' / in.	CHECKED - SPF	REVISIONS -
PLOT DATE = 02/28/2014	DATE - 02/28/2014	REVISIONS -

STATE OF ILLINOIS
DEPARTMENT OF TRANSPORTATION

ALIGNMENT, TIES & BENCHMARKS

SCALE: 100 SHEET NO. 1 OF 2 SHEETS STA. 100+00 TO STA. 150+00

F.A.P. RTE.	SECTION	COUNTY	TOTAL SHEETS	SHEET NO.
311	652-A	DUPAGE	383	43
CONTRACT NO. 60R06				
FED. ROAD DIST. NO. 1 ILLINOIS FED. AID PROJECT				