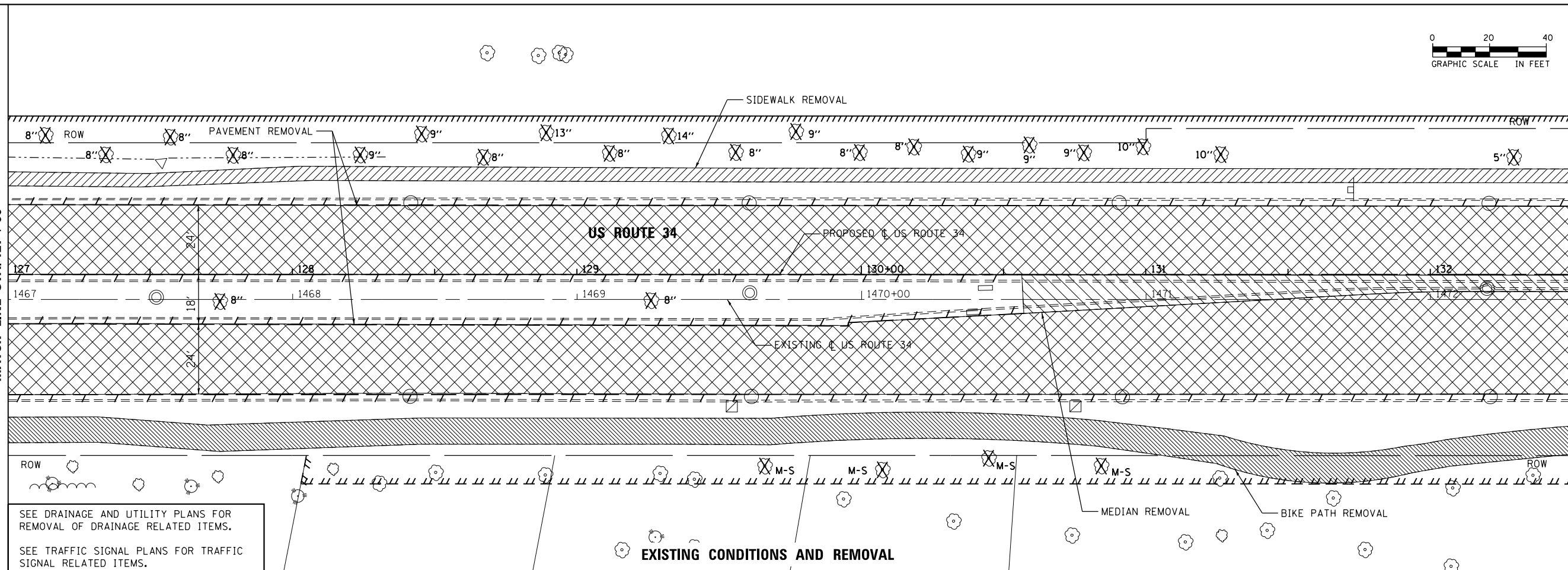


MATCH LINE STA. 127+00

MATCH LINE STA. 132+50

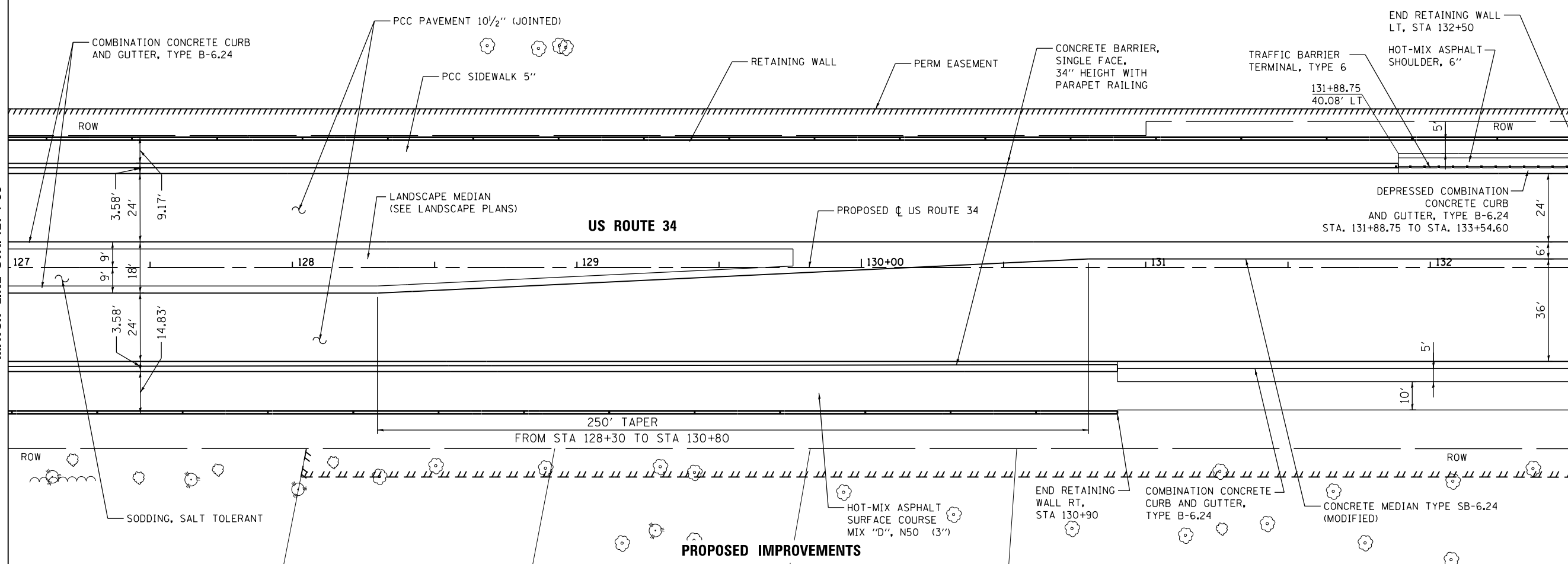


SEE DRAINAGE AND UTILITY PLANS FOR REMOVAL OF DRAINAGE RELATED ITEMS.
SEE TRAFFIC SIGNAL PLANS FOR TRAFFIC SIGNAL RELATED ITEMS.

EXISTING CONDITIONS AND REMOVAL

MATCH LINE STA. 127+00

MATCH LINE STA. 132+50



PROPOSED IMPROVEMENTS



| | | |
|-----------------------------|-------------------|-----------|
| USER NAME = URS | DESIGNED - MB | REVISED - |
| PLOT SCALE = 40.0000' / in. | DRAWN - KJB | REVISED - |
| PLOT DATE = 02/28/2014 | CHECKED - SPF | REVISED - |
| | DATE - 02/28/2014 | REVISED - |

**STATE OF ILLINOIS
DEPARTMENT OF TRANSPORTATION**

**ROADWAY PLAN
US ROUTE 34**

SCALE: 20 SHEET NO. 6 OF 8 SHEETS STA. 127+00 TO STA. 132+50

| F.A.P. RTE. | SECTION | COUNTY | TOTAL SHEETS | SHEET NO. |
|---|---------|--------|--------------|-----------|
| 311 | 652-A | DUPAGE | 383 | 51 |
| CONTRACT NO. 60R06 | | | | |
| FED. ROAD DIST. NO. 1 ILLINOIS FED. AID PROJECT | | | | |

FILE NAME = Q:\100T_25368367_US_34.ctb; CN: Ph2Drawings\Roadway\Plan&Profile\1616106-sht-Plan_006.dgn