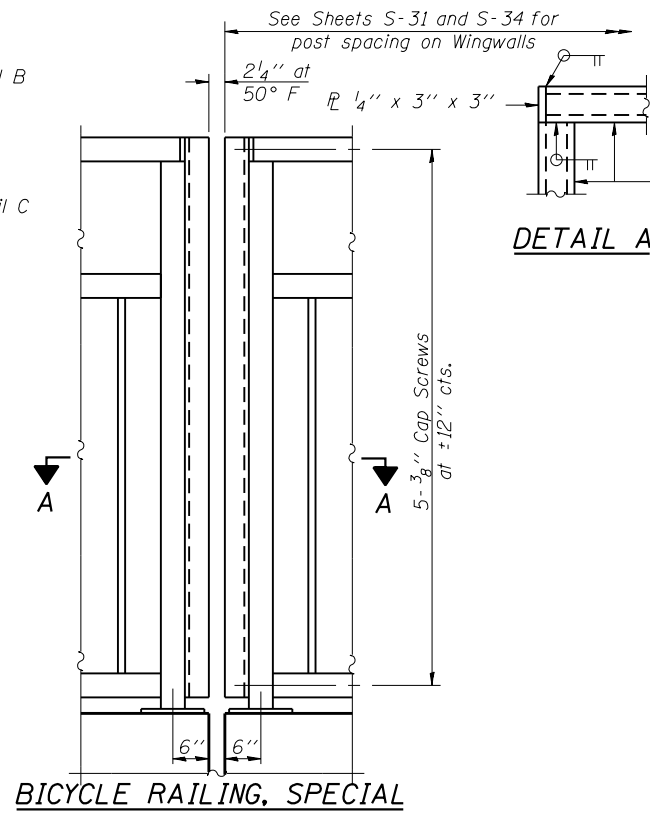


BICYCLE RAILING, SPECIAL



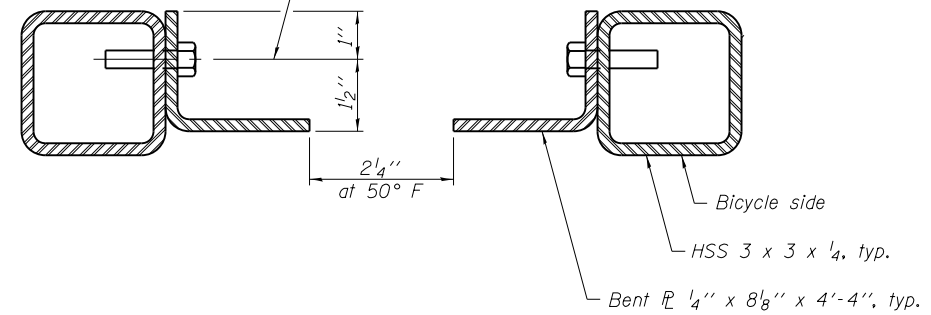
BICYCLE RAILING, SPECIAL

DETAIL A

DETAIL B

DETAIL C

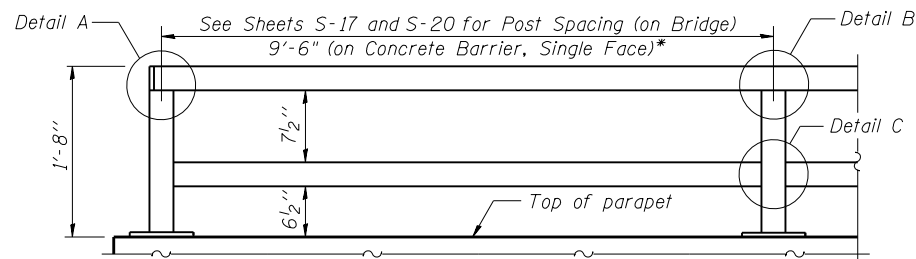
Drill & tap - 3/8" HHCS, typ.
L 1/4" x 2" x 2 1/2", typ.



SECTION A-A

All steel rail elements shall be galvanized according to Article 509.05 of the Standard Specifications.

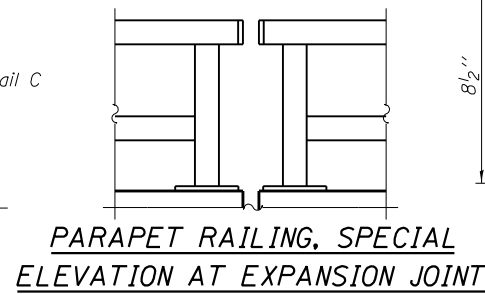
All steel rail elements shall be finished with Black Polyester Powder Coating over galvanized steel. See Special Provisions.



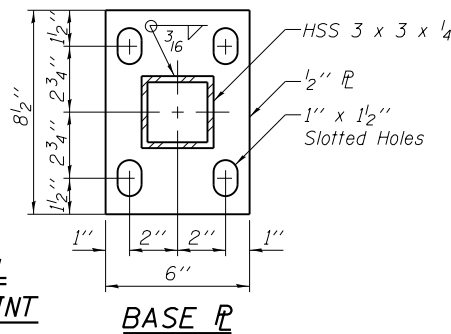
**PARAPET RAILING, SPECIAL
ELEVATION**

(Inside Face of Rail)

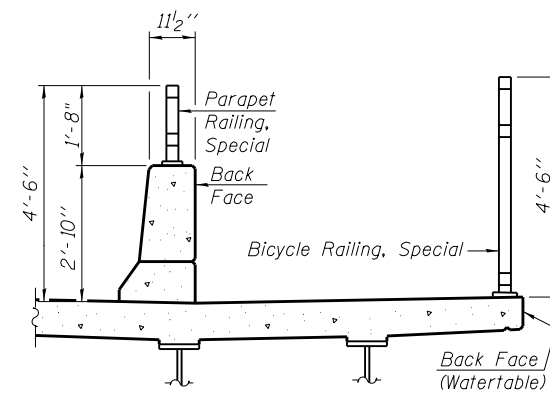
*End Panel Length
7'-1" (NW)
3'-7" (SW)
8'-9" (NE)
8'-6" (SE)



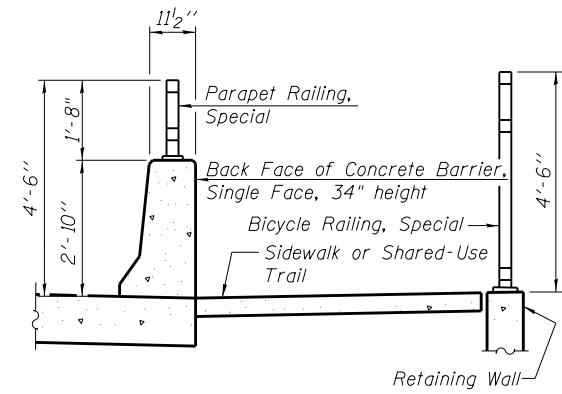
**PARAPET RAILING, SPECIAL
ELEVATION AT EXPANSION JOINT**



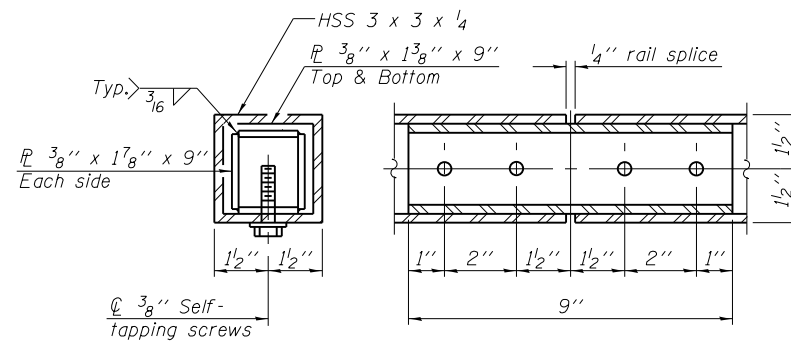
BASE PL



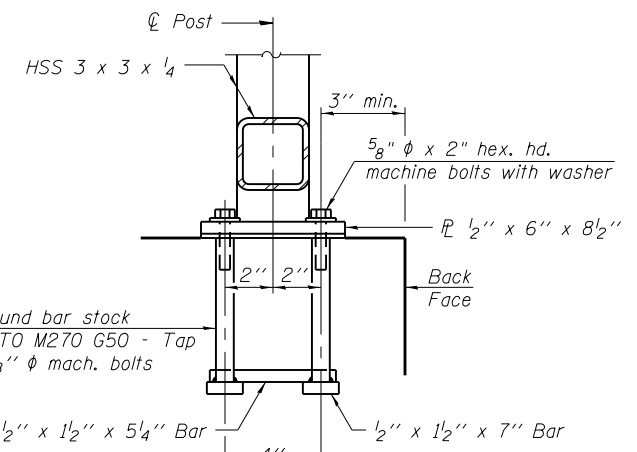
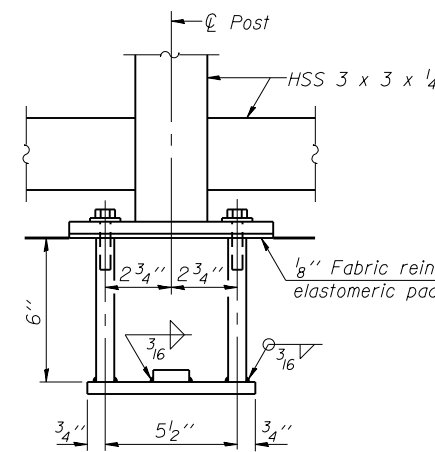
SECTION THRU DECK



SECTION THRU RETAINING WALL



RAIL SPLICE



ANCHOR BOLT DETAILS

In lieu of the cast-in-place anchor device shown, the Contractor has the option of drilling and setting 5/8" phi anchor rods according to Article 509.06 of the Standard Specifications. Embedment shall be according to the manufacturer's specifications.

BILL OF MATERIAL

Item	Unit	Quantity
Bicycle Railing, Special	Foot	2,854
Parapet Railing, Special	Foot	2,979



USER NAME =	DESIGNED - PMH	REVISED
	CHECKED - AMK	REVISED
PLOT SCALE =	DRAWN - PMH	REVISED
PLOT DATE = 03/19/2014	CHECKED - AMK	REVISED

**STATE OF ILLINOIS
DEPARTMENT OF TRANSPORTATION**

**BICYCLE RAILING
STRUCTURE NO. 022-0512**

SHEET NO. S-23 OF S-53 SHEETS

F.A.P. RTE.	SECTION	COUNTY	TOTAL SHEETS	SHEET NO.
311	652-A	DuPAGE	383	186
CONTRACT NO. 60R06				
ILLINOIS FED. AID PROJECT				