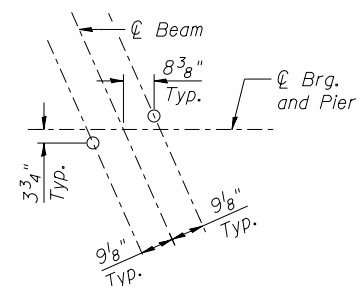
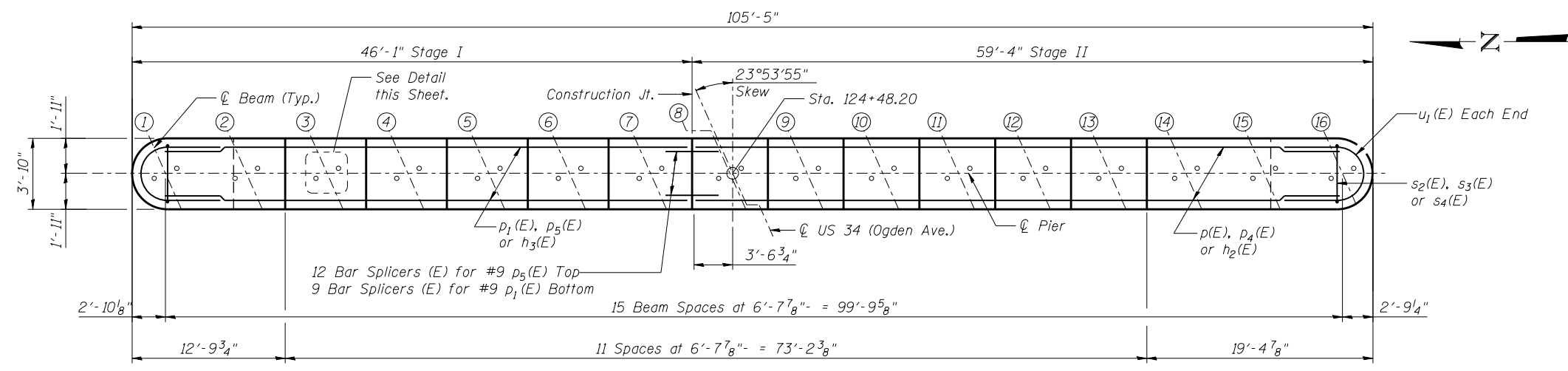


SEAT ELEVATIONS

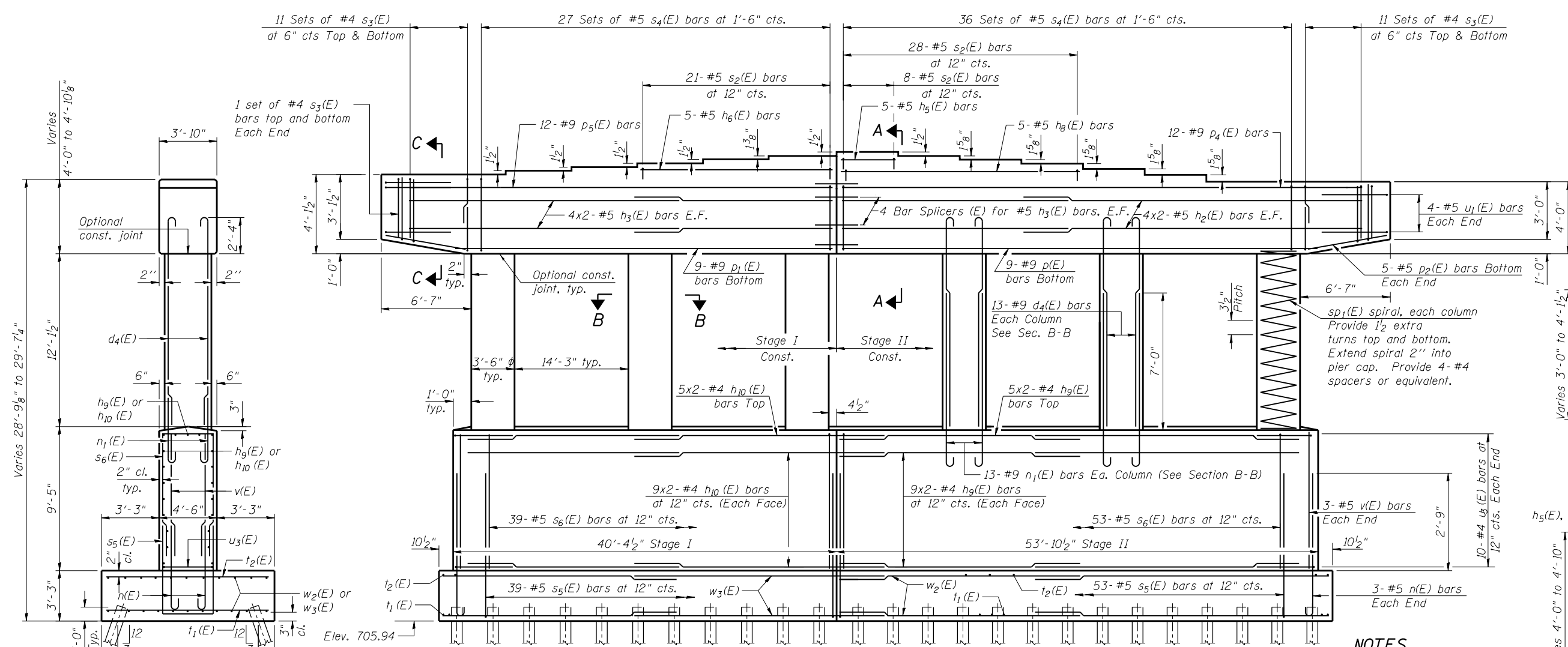
| Beam Line | Seat Elevation |
|-----------|----------------|
| 1 | 734.85 |
| 2 | 734.85 |
| 3 | 734.97 |
| 4 | 735.09 |
| 5 | 735.21 |
| 6 | 735.33 |
| 7 | 735.44 |
| 8 | 735.56 |
| 9 | 735.43 |
| 10 | 735.29 |
| 11 | 735.15 |
| 12 | 735.01 |
| 13 | 734.87 |
| 14 | 734.73 |
| 15 | 734.73 |
| 16 | 734.73 |



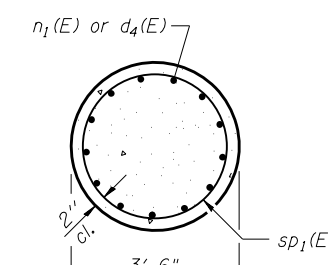
ANCHOR BOLT LAYOUT



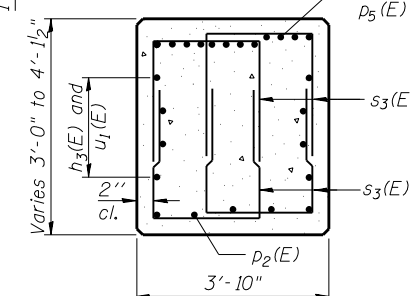
TOP PLAN



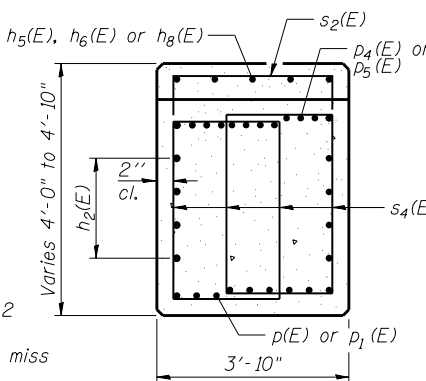
ELEVATION
(Looking East)



SEC. B-B



SEC. C-C



SEC. A-A

NOTES

1. Bars indicated 6x2-#4 etc. indicates 6 lines of bars with 2 lengths per line.
2. Space reinforcement in cap to miss anchor bolts.
3. Pour steps monolithically with cap.
4. For details of piles, see Sheet S-41.

MINIMUM BAR LAP

| TOP BARS | OTHER BARS |
|-----------------|-----------------|
| #4 bar = 2'-4" | #4 bar = 2'-1" |
| #5 bar = 2'-11" | #5 bar = 2'-7" |
| #9 bar = 9'-8" | #9 bar = 6'-10" |

END SECTION
See Sheet S-40 for battered pile locations



| | | |
|------------------------|----------------|---------|
| USER NAME = | DESIGNED - KMP | REVISED |
| | CHECKED - AMK | REVISED |
| PLOT SCALE = | DRAWN - KMP | REVISED |
| PLOT DATE = 02/28/2014 | CHECKED - AMK | REVISED |

STATE OF ILLINOIS
DEPARTMENT OF TRANSPORTATION

PIER 2
STRUCTURE NO. 022-0512
SHEET NO. S-39 OF S-53 SHEETS

| | | | | |
|--------------------|---------------|---------------|---------------------------|---------------|
| F.A.P. RTE. 311 | SECTION 652-A | COUNTY DuPage | TOTAL SHEETS 383 | SHEET NO. 202 |
| CONTRACT NO. 60R06 | | | ILLINOIS FED. AID PROJECT | |