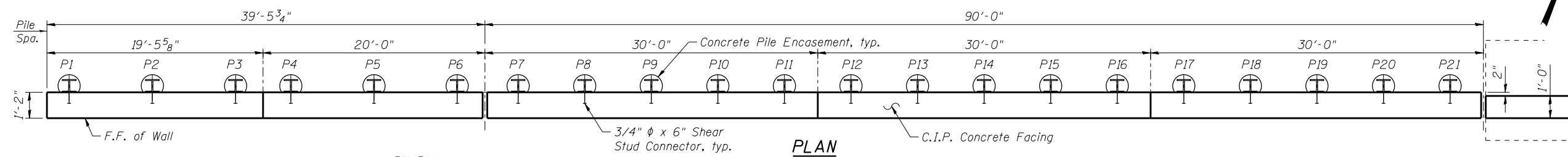
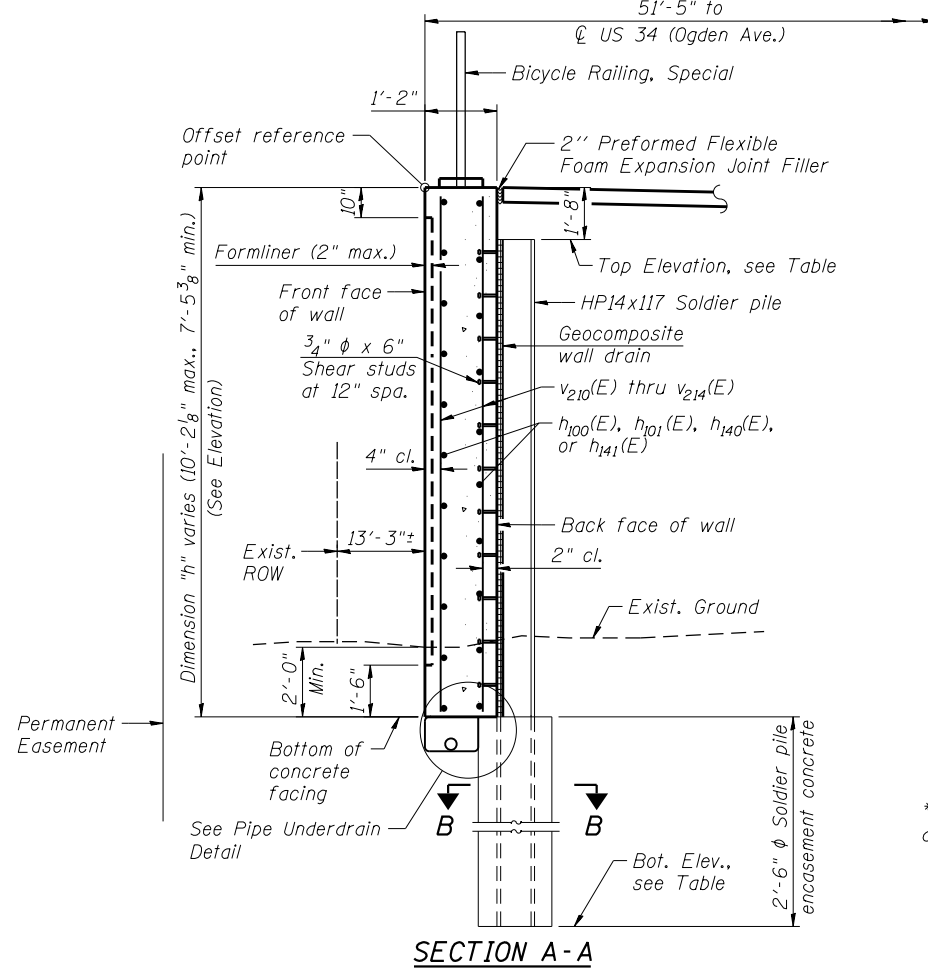


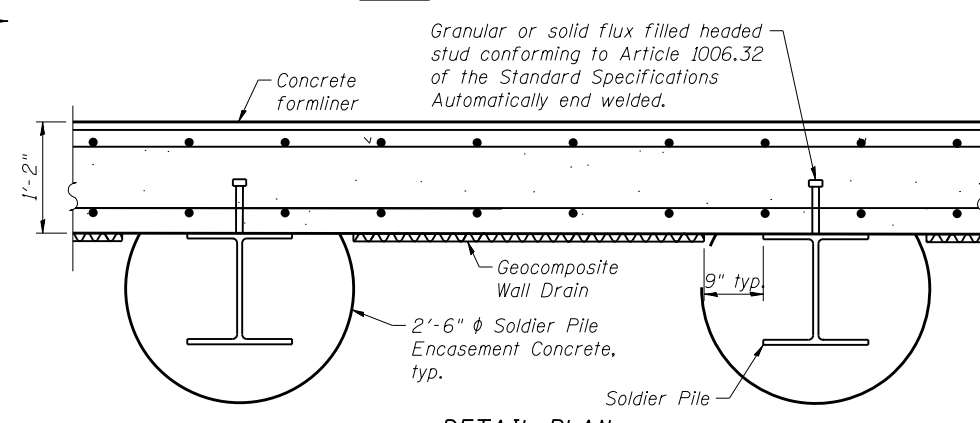
**ELEVATION**



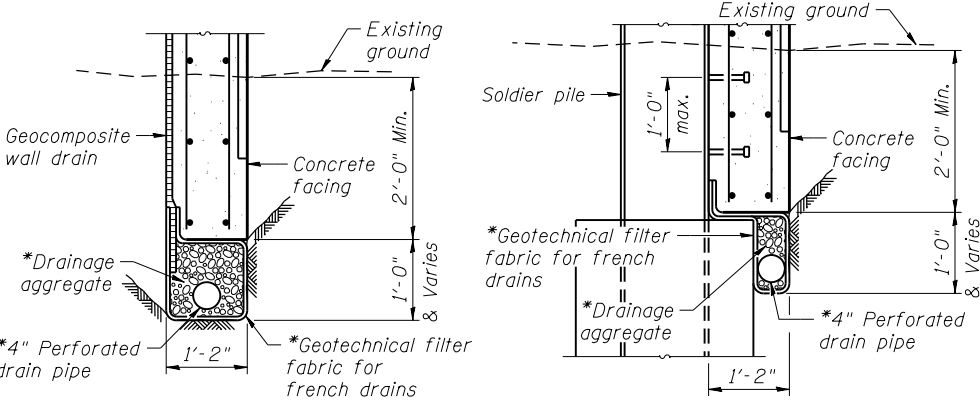
**PLAN**



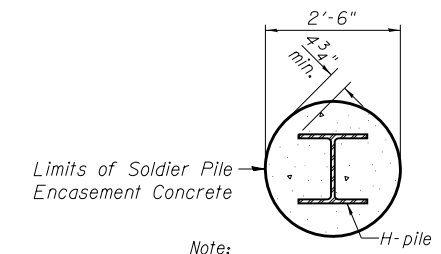
**SECTION A-A**



**DETAIL PLAN**



**BETWEEN SOLDIER PILES  
PIPE UNDERDRAIN DETAIL**



**SECTION B-B**

**MINIMUM BAR LAP**

#5 Bar = 2'-11" (horizontal bar)  
#5 Bar = 2'-7" (vertical bar)

**NOTES:**

1. F.F. - Denotes Front Face  
B.F. - Denotes Back Face  
E.F. - Denotes Each Face
2. See Sheet SW-2 for Bill of Material.
3. See Sheet SW-9 for Bar Bending and Cutting Diagrams, Bill of Bars, Concrete Construction Joint, and Expansion Joint details.
4. For Bicycle Railing post location spacing see General Plan and Elevation Sheet.
5. All structural steel shall conform to the requirements of AASHTO M270 grade 50.

**PILE DATA**

Pile No.	Top Elev.	Bottom Elev.	Length Ft.	No. of Studs
P1	708.84	686.92	21'-11"	7
P2	709.06	686.98	22'-1"	7
P3	709.29	686.96	22'-4"	7
P4	709.45	686.95	22'-6"	7
P5	709.69	686.94	22'-9"	8
P6	709.94	686.94	23'-0"	8
P7	710.12	685.96	24'-2"	8
P8	710.33	686.00	24'-4"	8
P9	710.54	685.96	24'-7"	9
P10	710.76	685.92	24'-10"	9
P11	710.98	685.98	25'-0"	9
P12	711.20	686.95	24'-3"	8
P13	711.42	686.92	24'-6"	8
P14	711.66	686.99	24'-8"	9
P15	711.89	686.97	24'-11"	9
P16	712.13	686.96	25'-2"	9
P17	712.37	687.95	24'-5"	8
P18	712.62	687.95	24'-8"	9
P19	712.87	687.95	24'-11"	9
P20	713.12	687.96	25'-2"	9
P21	713.38	687.97	25'-5"	9



USER NAME =	DESIGNED - KMP	REVISED
PLOT SCALE =	CHECKED - AMK	REVISED
PLOT DATE = 03/19/2014	DRAWN - STB	REVISED
	CHECKED - MAD	REVISED

STATE OF ILLINOIS  
DEPARTMENT OF TRANSPORTATION

DETAIL PLAN AND ELEVATION 1  
STRUCTURE NO. 022-W069

SHEET NO. SW-3 OF SW-15 SHEETS

F.A.P. RTE.	SECTION	COUNTY	TOTAL SHEETS	SHEET NO.
311	652-A	DuPAGE	383	235
CONTRACT NO. 60R06				
ILLINOIS FED. AID PROJECT				