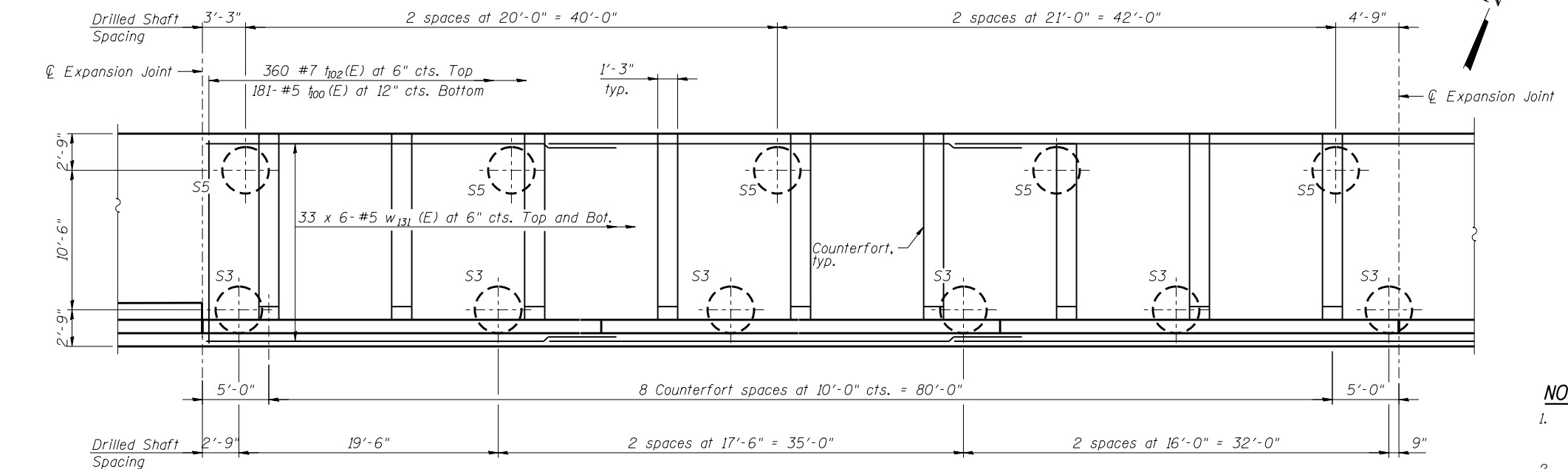
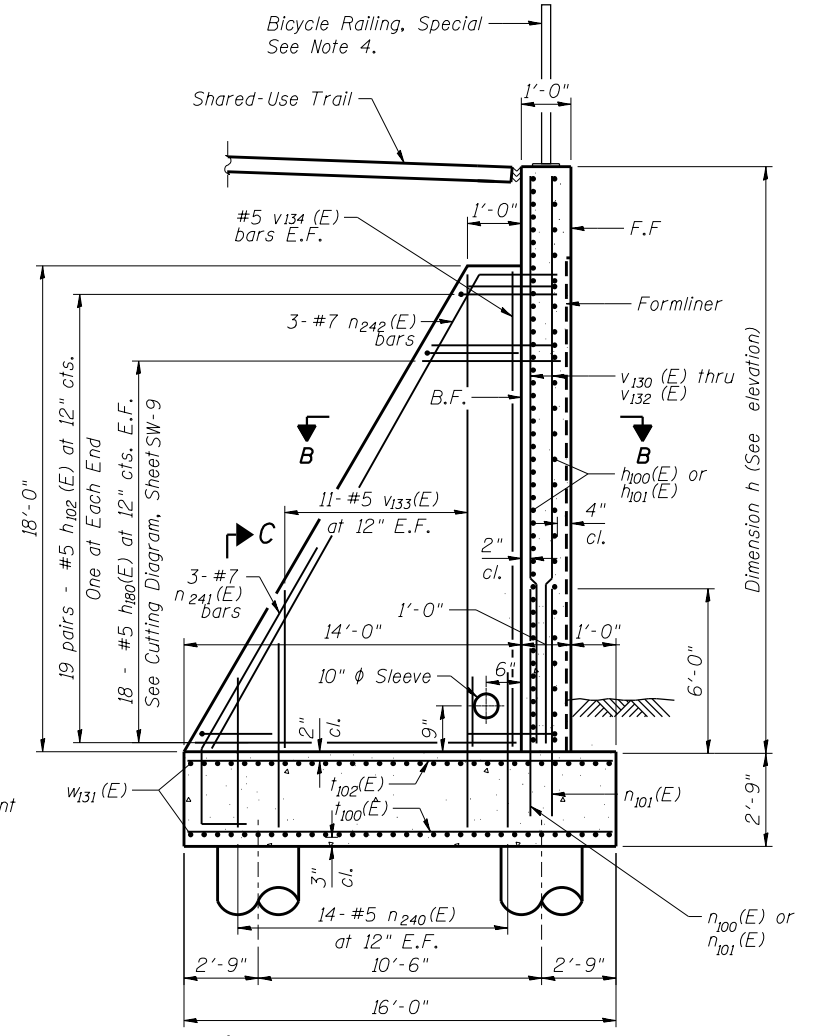


ELEVATION



PLAN



MINIMUM BAR LAP

- #5 Bar = 2'-11" (horizontal bar)
- #5 Bar = 2'-7" (vertical bar)
- #6 Bar = 3'-1" (vertical bar)
- #7 Bar = 5'-2"

NOTES:

1. F.F. - Denotes Front Face
- B.F. - Denotes Back Face
- E.F. - Denotes Each Face
2. See Sheet SW-2 for Wall Drainage Details and Bill of Material.
3. See Sheet SW-9 for Bar Bending and Cutting Diagrams, Bill of Bars, Concrete Construction Joint, Sections B-B and C-C, and Expansion Joint details.
4. For Bicycle Railing post location spacing see General Plan and Elevation Sheet.
5. Reinforcement bars designated (E) shall be epoxy coated.
6. Bars indicated thus 20 x 3- #5 etc. indicates 20 lines of bars with 3 lengths per line.



USER NAME =	DESIGNED - KMP	REVISED
	CHECKED - AMK	REVISED
PLOT SCALE =	DRAWN - STB	REVISED
PLOT DATE = 03/19/2014	CHECKED - MAD	REVISED

STATE OF ILLINOIS
DEPARTMENT OF TRANSPORTATION

DETAIL PLAN AND ELEVATION 5
STRUCTURE NO. 022-W069

SHEET NO. SW-7 OF SW-15 SHEETS

F.A.P. RTE.	SECTION	COUNTY	TOTAL SHEETS	SHEET NO.
311	652-A	DuPAGE	383	239
CONTRACT NO. 60R06				
ILLINOIS FED. AID PROJECT				