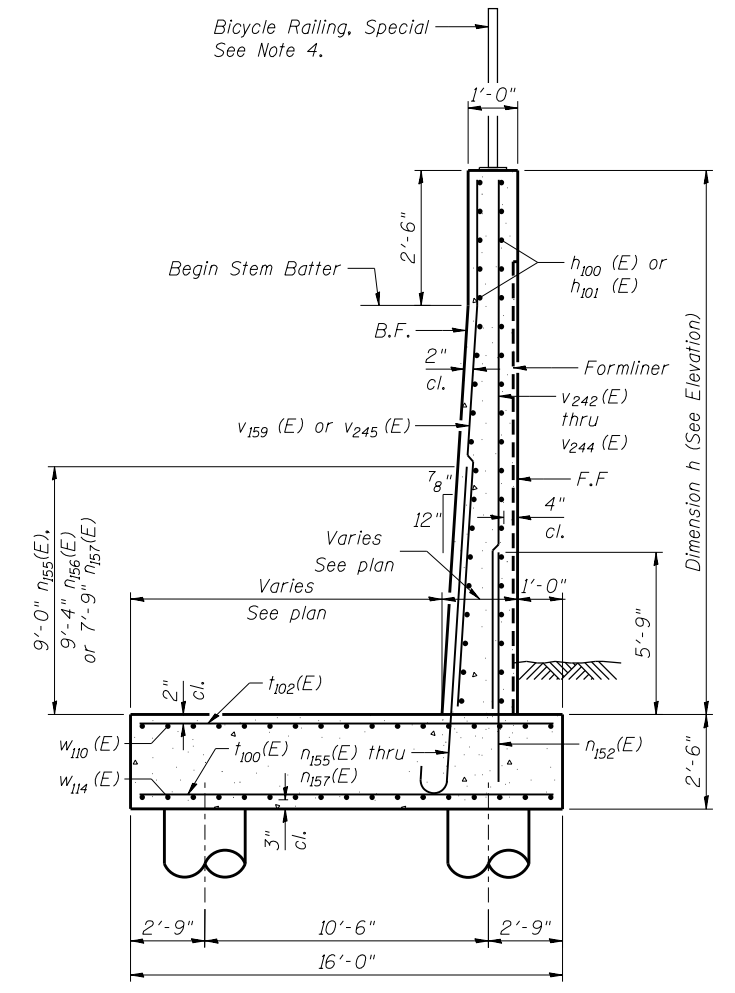
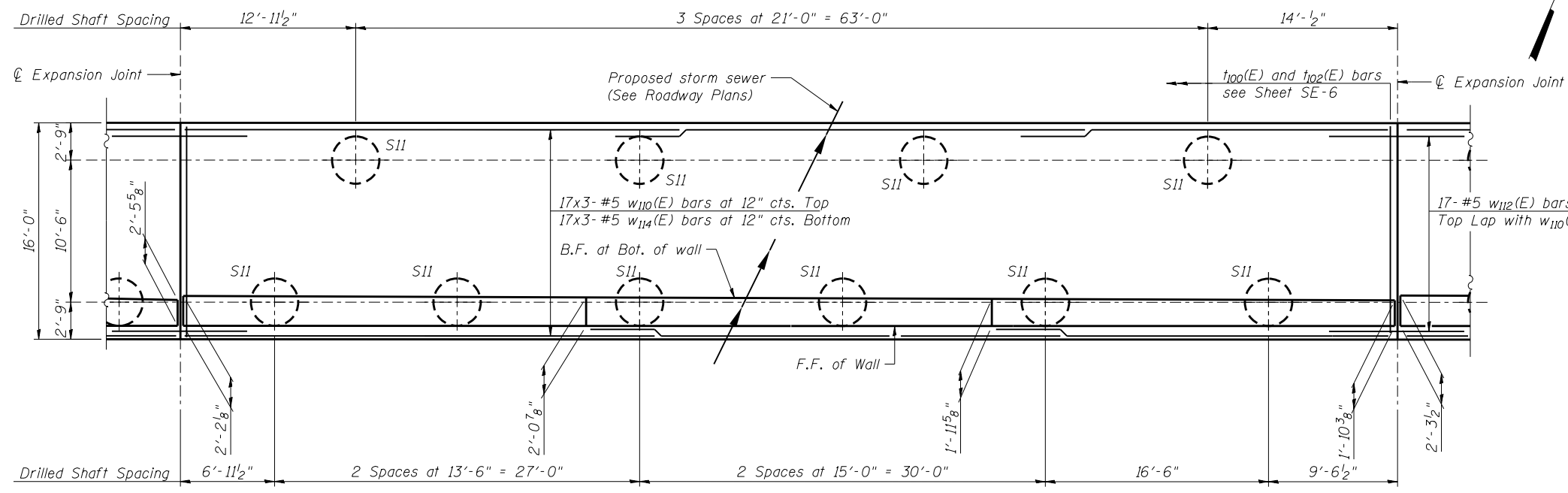


**ELEVATION**  
Proposed storm sewer (See Roadway Plans)



**SECTION A-A**



**PLAN**

**MINIMUM BAR LAP**

- #5 bar = 2'-7" (Vertical)
- #5 bar = 2'-11" (Horizontal)
- #6 bar = 3'-1"

**NOTES**

1. F.F. - Denotes Front Face  
B.F. - Denotes Back Face  
E.F. - Denotes Each Face
2. See Sheet SE-2 for Bill of Material.
3. See Sheet SE-9 for Bar Bending Diagrams, Bill of Bars, Concrete Construction Joint, and Expansion Joint details.
4. For Bicycle Railing post location spacing see General Plan and Elevation Sheet.
6. Bars indicated thus 17 x 3-#5 etc. indicates 17 lines of bars with 3 lengths per line.



USER NAME =	DESIGNED - KMP	REVISED
	CHECKED - AMK	REVISED
PLOT SCALE =	DRAWN - KMP	REVISED
PLOT DATE = 02/28/2014	CHECKED - AMK	REVISED

**STATE OF ILLINOIS  
DEPARTMENT OF TRANSPORTATION**

**DETAIL PLAN AND ELEVATION 5  
STRUCTURE NO. 022-W071**

SHEET NO. SE-7 OF SE-15 SHEETS

F.A.P. RTE.	SECTION	COUNTY	TOTAL SHEETS	SHEET NO.
311	652-A	DuPAGE	383	272
CONTRACT NO. 60R06			ILLINOIS FED. AID PROJECT	