

Benchmark: CP#3 - P.K. Rod in ground at driveway next to Nicor Gas pressure regulation station. Sta. 113+67.17, 50.22' Rt. Elev. 706.54.

Existing Structure: None. One lane of traffic in both directions to be maintained during construction utilizing stage construction and Temporary MSE Walls.

Salvage: None.

STATION 124+94.76
BUILT 20__ BY
STATE OF ILLINOIS
F.A. RT. 311 SEC. 652-A
LOADING HL-93
STR. NO. 022-0512

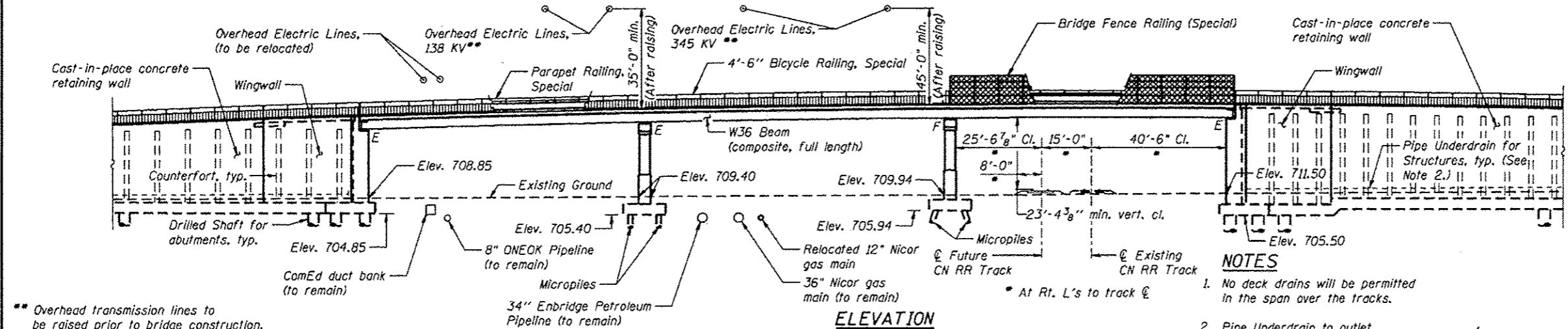
NAME PLATE
See Std. 515001

LOADING HL-93
Allow 50#/sq. ft. for future wearing surface.

DESIGN SPECIFICATIONS
2012 AASHTO LRFD Bridge Design Specifications, 6th Edition

DESIGN STRESSES
FIELD UNITS
f'c = 3,500 psi
fy = 60,000 psi (Reinforcement)
fy = 50,000 psi (M270 Grade 50)

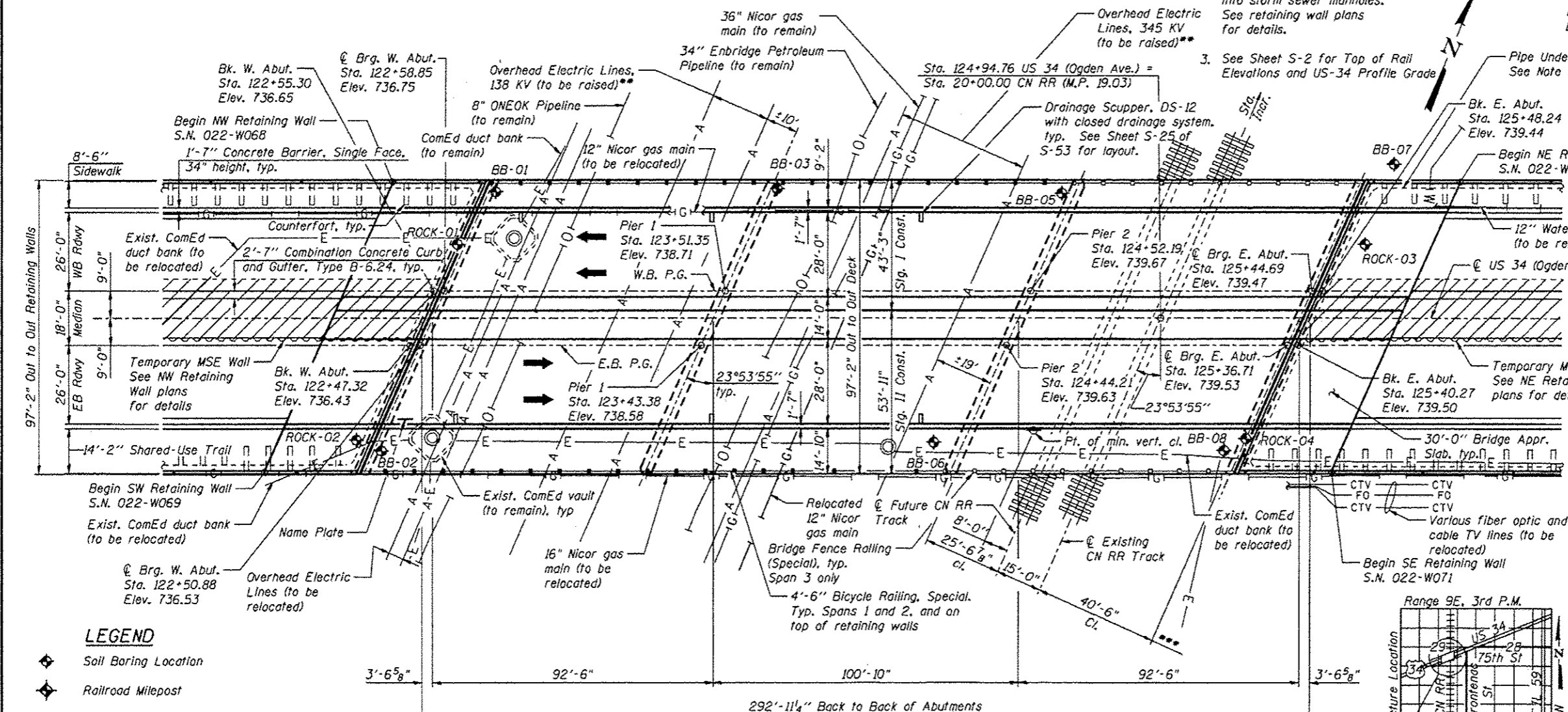
SEISMIC DATA
Seismic Performance Zone (SPZ) = 1
Design Spectral Acceleration at 1.0 sec. (Sp1) = 0.065
Design Spectral Acceleration at 0.2 sec. (Sp5) = 0.123
Soil Site Class = C



** Overhead transmission lines to be raised prior to bridge construction.

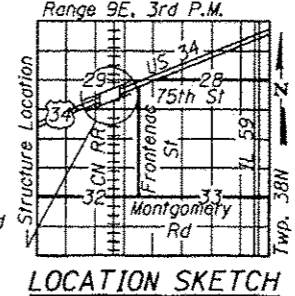
NOTES

- No deck drains will be permitted in the span over the tracks.
- Pipe Underdrain to outlet into storm sewer manholes. See retaining wall plans for details.
- See Sheet S-2 for Top of Rail Elevations and US-34 Profile Grade.



PLAN

M.P. 19 Sta. 18+50 *** Existing and future CN tracks may be shifted ±7'-6" to the west after the project is built to accommodate two future metra tracks of 15'-0" spacing to east of CN RR tracks.



Arsalan Khan
ARSALAN M. KHAN, S.E.
LICENSE NO.: 081-006258
EXPIRES: NOVEMBER 30, 2014
DATE: 02-26-2014

APPROVED
For Structural Adequacy Only

A. Carl Ferguson
Engineer of Bridges & Structures

GENERAL PLAN & ELEVATION
US 34 (OGDEN AVE.) OVER CN RR
F.A.P. RTE. 311 - SECTION 652-A
DUPAGE COUNTY
STATION 124+94.76
STRUCTURE NO. 022-0512



DESIGNED - PMV/KMP/BAR	REVISOR
CHECKED - AMK	REVISOR
DRAWN - PMV	REVISOR
CHECKED - AMK	REVISOR

STATE OF ILLINOIS
DEPARTMENT OF TRANSPORTATION

SHEET NO. S-1 OF S-53 SHEETS

F.A.P. RTE.	SECTION	COUNTY	TOTAL SHEETS	SHEET NO.
311	652-A	DUPAGE	383	154
			CONTRACT NO. 60R06	

ILLINOIS FED. AID PROJECT