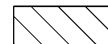


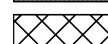
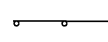
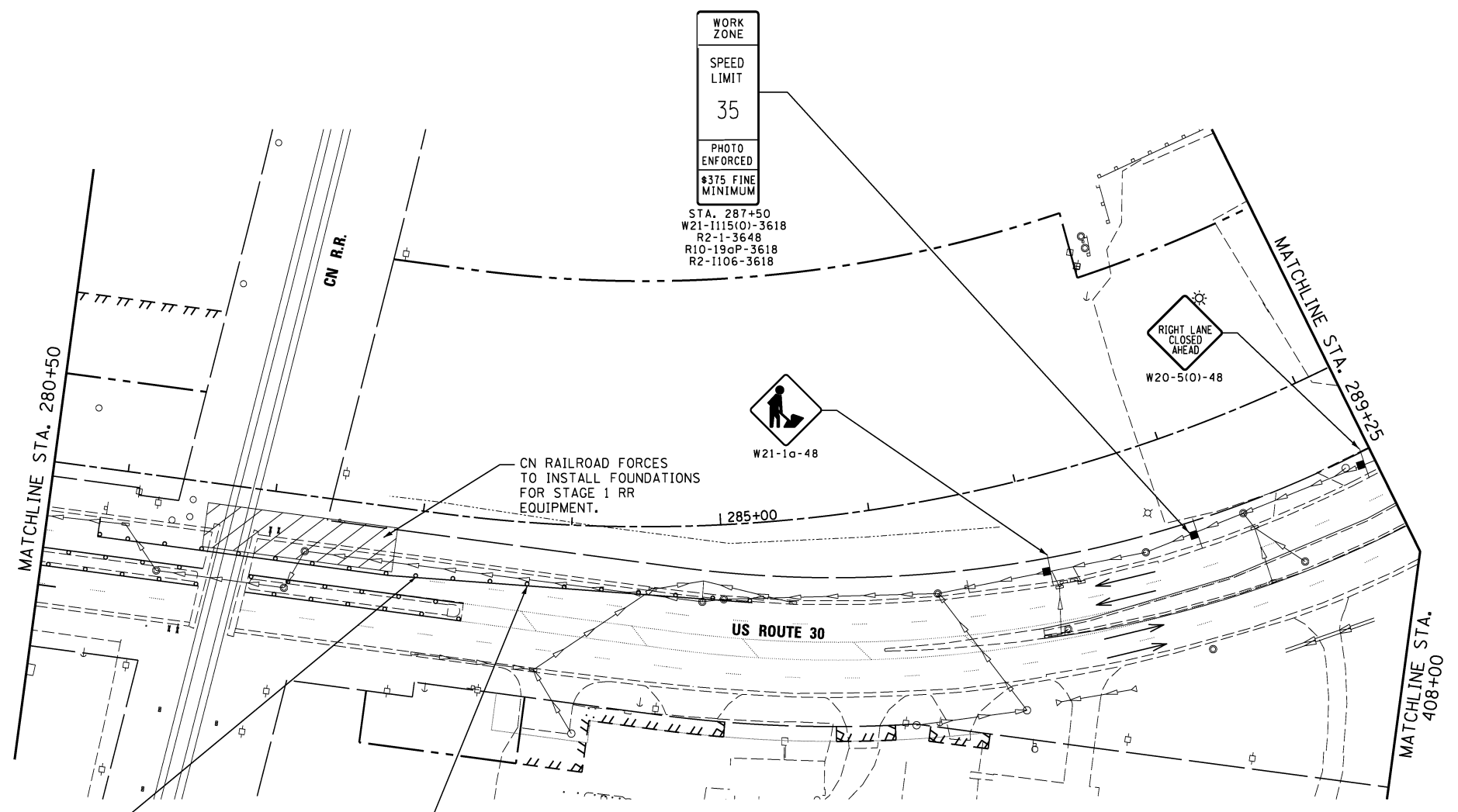
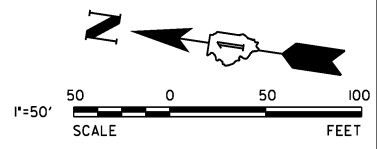


**LEGEND**

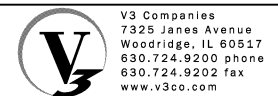
-  WORK AREA
-  PAVEMENT CONSTRUCTED IN STAGE
-  PAVEMENT CONSTRUCTED IN PREVIOUS STAGE
-  TEMPORARY PAVEMENT
-  DRUM OR TYPE II BARRICADE WITH STEADY BURN MONO-DIRECTIONAL LIGHTS



SEE NOTE 4 AND 5 FOR DETAILS ON SIGNAGE AND BARRICADE PLACEMENT

DRUM OR TYPE II BARRICADE WITH STEADY BURN LIGHT

- NOTES:**
1. CONTRACTOR IS TO USE DAILY LANE CLOSURE TO CONSTRUCT TEMPORARY PAVEMENT AND MOST OF THE ADVANCED STORM SEWER. THE CONTRACTOR SHALL USE HIGHWAY STANDARD 701606-08
  2. CONTRACTOR TO REMOVE ALL CONFLICTING SIGNS BEFORE INSTALLING CONSTRUCTION SIGNS.
  3. DRUMS WITH STEADY BURN MONO-DIRECTIONAL LIGHTS SHALL USE 50' C-C IN TYPICAL SECTIONS, 25' C-C IN CURVES AND RADII AND 20' C-C IN TAPERS.
  4. INSTALL TRAFFIC CONTROL PER HIGHWAY STANDARD 701606-08 TO CLOSE US 30 OUTSIDE LANE (NORTHBOUND ONLY) IN ORDER FOR CN RAILROAD FORCES TO INSTALL FOUNDATIONS FOR RELOCATED RAILROAD WARNING DEVICES
  5. THIS STAGE WILL BE LIMITED TO 5 WORKING DAYS IMMEDIATELY BEFORE THE BEGINNING OF STAGE 1.



USER NAME = hshh	DESIGNED - DTE	REVISED -
	DRAWN - DRP	REVISED -
PLOT SCALE = 50.0000' / 1"	CHECKED - VJD	REVISED -
PLOT DATE = 8/21/2013	DATE - 08/14/2013	REVISED -

**STATE OF ILLINOIS  
DEPARTMENT OF TRANSPORTATION**

**MAINTENANCE OF TRAFFIC - PRE STAGE 1B  
STATION 280+50 TO STATION 289+25**

SCALE: 1" = 50' SHEET NO. 6 OF 6 SHEETS STA. 280+50 TO STA. 289+25

F.A.P. RTE.	SECTION	COUNTY	TOTAL SHEETS	SHEET NO.
353	11-Y-A	COOK	354	51
CONTRACT NO. 60R19				
ILLINOIS FED. AID PROJECT				