

NOTES:
 1. HORIZONTAL CONTROL, VERTICAL CONTROL, CENTERLINE ALIGNMENT, AND TOPOGRAPHIC FEATURES WERE SUPPLIED BY ILLINOIS DEPARTMENT OF TRANSPORTATION.

STATE OF ILLINOIS)
) S.S.
 COUNTY OF COOK)

UTILITY(IES) SHOWN HEREON HAVE BEEN INVESTIGATED BY ASE IN ACCORDANCE WITH SUE INDUSTRY STANDARDS QUALITY LEVEL A (QLA) AND B (QLB). ALL OTHER INFORMATION SHOWN HAS BEEN PROVIDED BY OTHERS.

FIELD WORK WAS PERFORMED BETWEEN THE 25TH OF AUGUST AND 3RD DAY OF NOVEMBER, A.D., 2010.

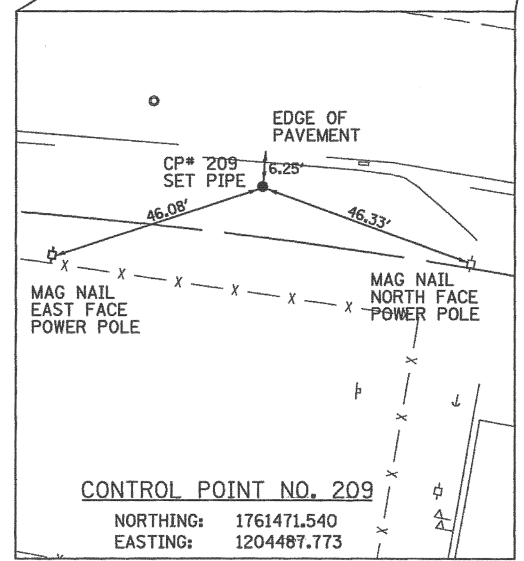
IN WITNESS WHEREOF, I HAVE HERETO SET MY HAND AND SEAL THIS 4TH DAY OF NOVEMBER A.D., 2010. CHICAGO, IL.



Steven M. Rienks
 STEVEN M. RIENKS - ILLINOIS PROFESSIONAL ENGINEER NUMBER 62-044619
 MY LICENSE EXPIRES 11/30/2011

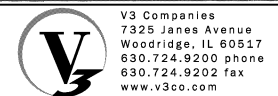
LEGEND

—T—	EXISTING UNDERGROUND TELEPHONE
—W—	EXISTING UNDERGROUND WATER
—E—	EXISTING UNDERGROUND ELECTRIC
—G—	EXISTING UNDERGROUND GAS
—CTV—	EXISTING UNDERGROUND CABLE TV
—FO—	EXISTING UNDERGROUND FIBER OPTIC
—SS—	EXISTING UNDERGROUND SANITARY SEWER
—EOGI—	END OF SURFACE GEOPHYSICAL INFORMATION



EXIST. CURVE #1
 PI STA. = 270+82.35 (N=1,761,738.9266 E= 1,204,525.6003)
 DELTA = 31° 05' 52.35" (RT)
 D = 04° 45' 31.63"
 T = 335.01'
 L = 653.48'
 R = 1,204.00'
 E = 45.74'
 PC STA. = 267+47.35 (N=1,762,023.0667 E=1,204,348.1355)
 PT STA. = 274+00.83 (N=1,761,403.9605 E=1,204,530.8022)

AMERICAN
 SURVEYING & ENGINEERING, P.C.
 SURVEYORS - ENGINEERS
 GEODESISTS - MAPPING SCIENTISTS
 Chicago 312-277-2000 / Fax 312-277-2002
 Dixon 815-288-6231 / Fax 815-288-6277
 Aurora 630-897-4105 / Fax 630-897-4121
 Illinois Professional Design Firm No. 184-003192



USER NAME = hshah	DESIGNED - DTE	REVISED -
PLOT SCALE = 50.0000' / in.	DRAWN - DRP	REVISED -
PLOT DATE = 8/21/2013	CHECKED - VJD	REVISED -
	DATE - 08/14/2013	REVISED -

**STATE OF ILLINOIS
 DEPARTMENT OF TRANSPORTATION**

SUBSURFACE UTILITY EXPLORATION PLANS

SCALE: 1" = 50' SHEET NO. 2 OF 12 SHEETS STA. TO STA.

F.A.P. RTE.	SECTION	COUNTY	TOTAL SHEETS	SHEET NO.
353	11-Y-A	COOK	354	128
CONTRACT NO. 60R19				
ILLINOIS FED. AID PROJECT				