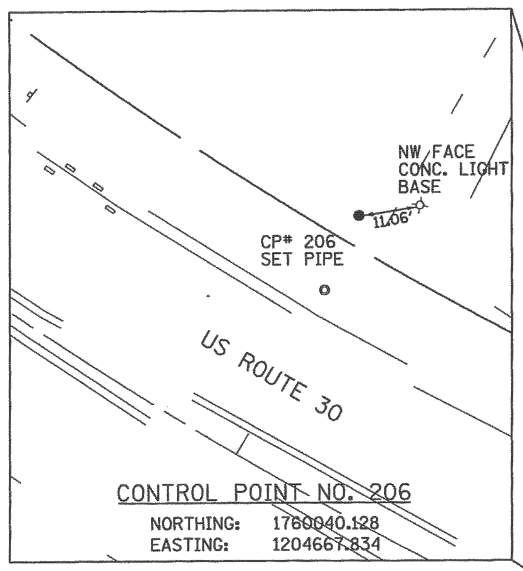


EXIST. CURVE #2
 PI STA. = 287+91.86 (N=1,760,013.1018 E= 1,204,552.4017)
 DELTA = 42° 36' 11.55" (LT)
 D = 06° 51' 45.61"
 T = 325.54'
 L = 620.80'
 R = 834.89'
 E = 61.22'
 PCC STA. = 284+66.32 (N=1,760,338.5997 E=1,204,547.3468)
 PT STA. = 290+87.11 (N=1,759,776.9378 E=1,204,776.4574)

EXIST. CURVE #3
 PI STA. = 293+07.26 (N=1,759,617.2350 E= 1,204,927.9723)
 DELTA = 33° 52' 53.03" (LT)
 D = 07° 55' 40.03"
 T = 220.1403'
 L = 427.37'
 R = 722.72'
 E = 32.78'
 PC STA. = 290+87.11 (N=1,759,776.9378 E=1,204,776.4574)
 PT STA. = 295+14.49 (N=1,759,569.1165 E=1,205,142.7894)



- LEGEND**
- T — EXISTING UNDERGROUND TELEPHONE
 - W — EXISTING UNDERGROUND WATER
 - E — EXISTING UNDERGROUND ELECTRIC
 - G — EXISTING UNDERGROUND GAS
 - CTV — EXISTING UNDERGROUND CABLE TV
 - FO — EXISTING UNDERGROUND FIBER OPTIC
 - S — EXISTING UNDERGROUND SANITARY SEWER
 - EOGI — END OF SURFACE GEOPHYSICAL INFORMATION

STATE OF ILLINOIS)
 COUNTY OF COOK) S.S.

UTILITY(IES) SHOWN HEREON HAVE BEEN INVESTIGATED BY ASE IN ACCORDANCE WITH SUE INDUSTRY STANDARDS QUALITY LEVEL A (QLA) AND B (QLB). ALL OTHER INFORMATION SHOWN HAS BEEN PROVIDED BY OTHERS.

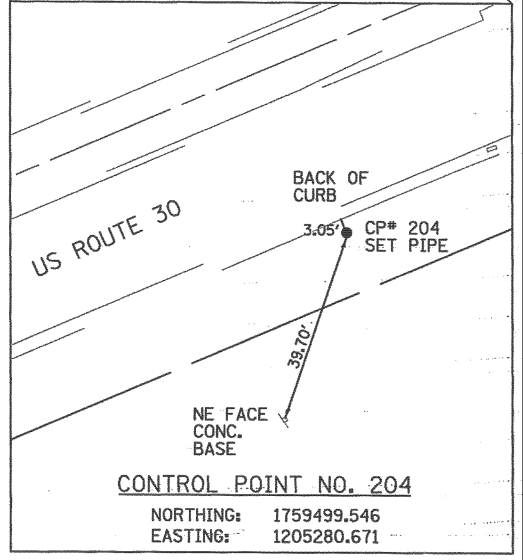
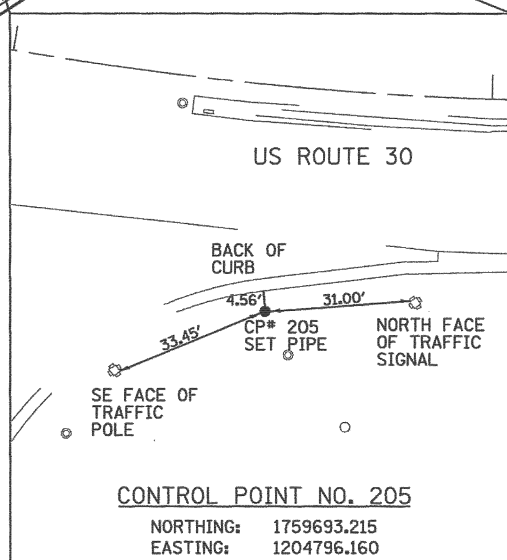
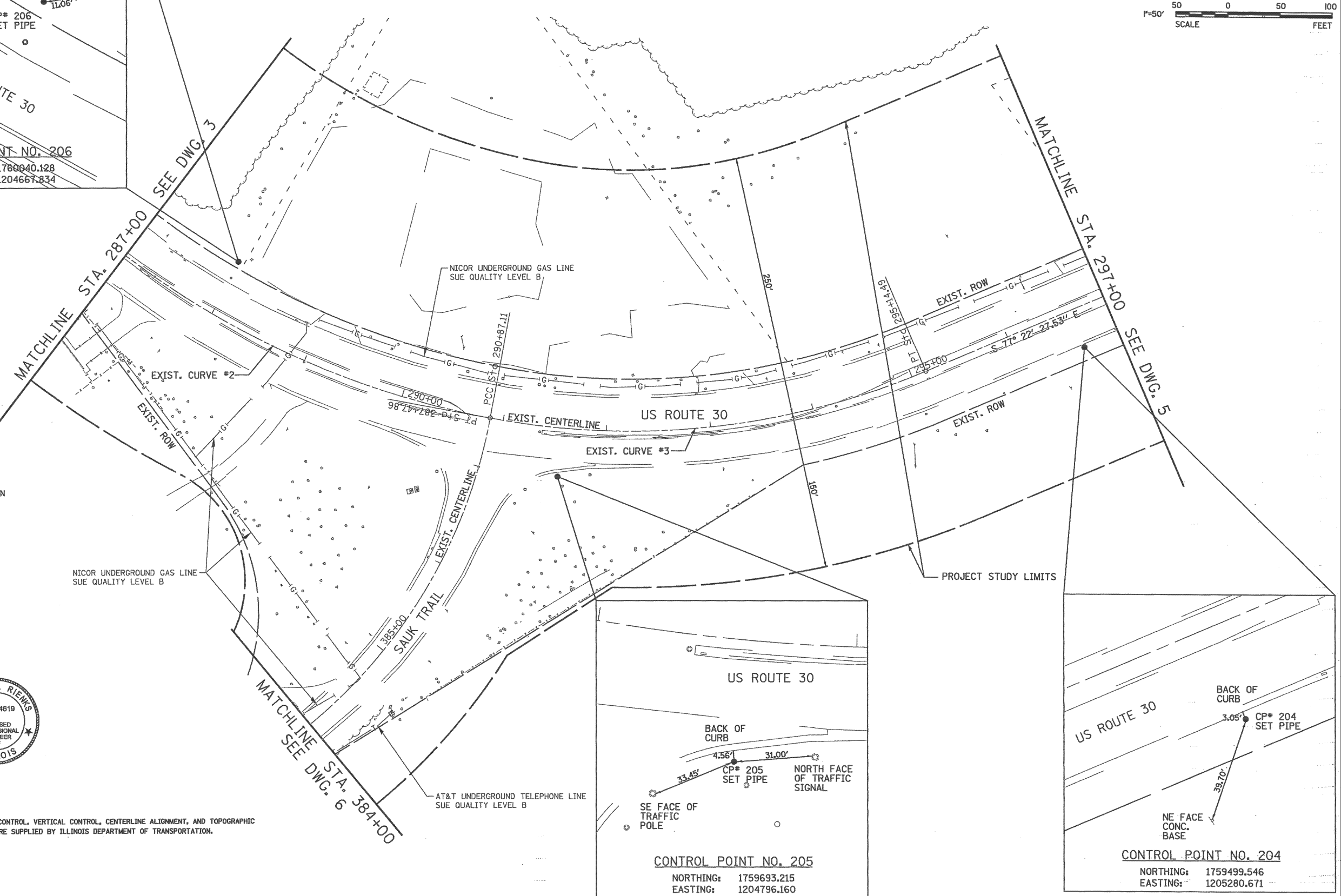
FIELD WORK WAS PERFORMED BETWEEN THE 25TH OF AUGUST AND 3RD DAY OF NOVEMBER, A.D., 2010.

IN WITNESS WHEREOF, I HAVE HEREUNTO SET MY HAND AND SEAL THIS 4TH DAY OF NOVEMBER A.D., 2010. CHICAGO, IL.

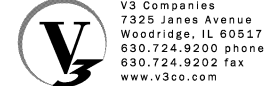


Steven M. Rienks
 STEVEN M. RIENKS - ILLINOIS PROFESSIONAL ENGINEER NUMBER 62-044619
 MY LICENSE EXPIRES 11/30/2011

NOTES:
 1. HORIZONTAL CONTROL, VERTICAL CONTROL, CENTERLINE ALIGNMENT, AND TOPOGRAPHIC FEATURES WERE SUPPLIED BY ILLINOIS DEPARTMENT OF TRANSPORTATION.



AMERICAN
 SURVEYING & ENGINEERING, P.C.
 SURVEYORS - ENGINEERS
 GEODESISTS - MAPPING SCIENTISTS
 Chicago 312-277-2000 / Fax 312-277-2002
 Dixon 815-288-6231 / Fax 815-288-6277
 Aurora 603-897-4105 / Fax 630-897-4121
 Illinois Professional Design Firm No. 184-003192



USER NAME = hshsh	DESIGNED - DTE	REVISED -
PLOT SCALE = 50.0000' / in.	DRAWN - DRP	REVISED -
PLOT DATE = 8/21/2013	CHECKED - VJD	REVISED -
	DATE - 08/14/2013	REVISED -

**STATE OF ILLINOIS
 DEPARTMENT OF TRANSPORTATION**

SUBSURFACE UTILITY EXPLORATION PLANS

SCALE: 1" = 50' SHEET NO. 4 OF 12 SHEETS STA. TO STA.

F.A.P. RTE.	SECTION	COUNTY	TOTAL SHEETS	SHEET NO.
353	11-Y-A	COOK	354	130
CONTRACT NO. 60R19				
ILLINOIS FED. AID PROJECT				