

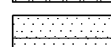
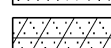
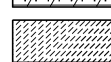
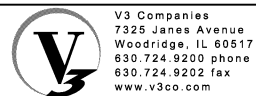
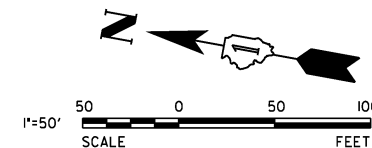
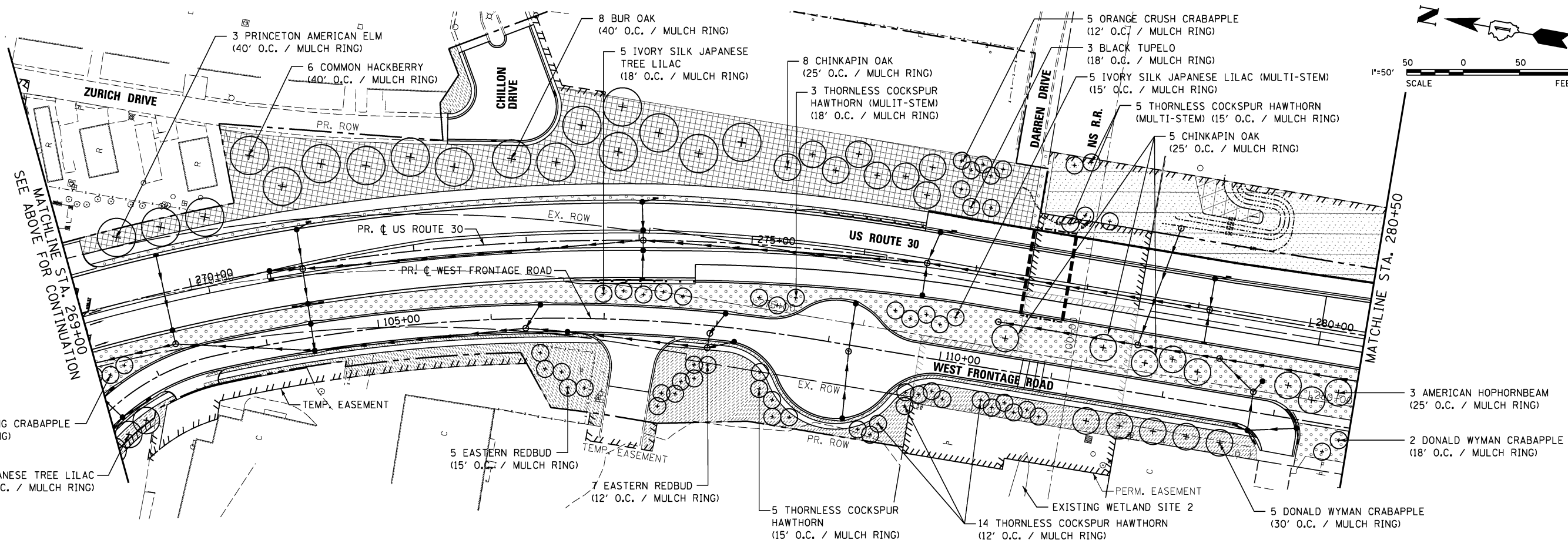
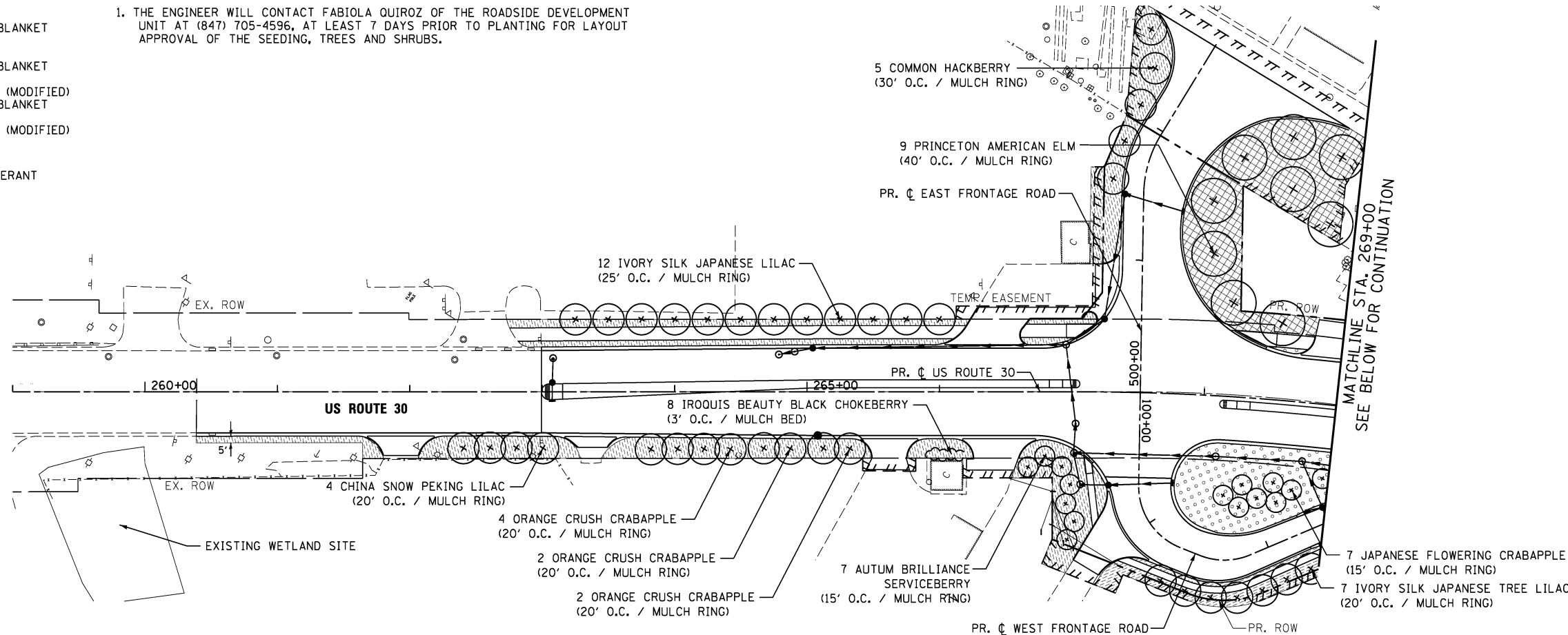
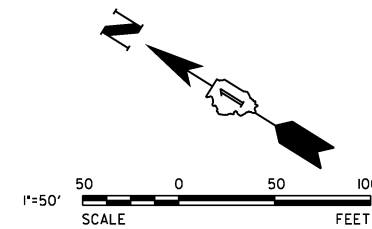


LEGEND

-  SEEDING, CLASS 1A
EROSION CONTROL BLANKET
-  SEEDING, CLASS 2A
EROSION CONTROL BLANKET
-  SEEDING, CLASS 4A (MODIFIED)
EROSION CONTROL BLANKET
-  SEEDING, CLASS 4B (MODIFIED)
MULCH, METHOD 2
-  SODDING, SALT TOLERANT

NOTES:

1. THE ENGINEER WILL CONTACT FABIOLA QUIROZ OF THE ROADSIDE DEVELOPMENT UNIT AT (847) 705-4596, AT LEAST 7 DAYS PRIOR TO PLANTING FOR LAYOUT APPROVAL OF THE SEEDING, TREES AND SHRUBS.



USER NAME = *USER*	DESIGNED - DTE	REVISED -
PLOT SCALE = *SCALE*	DRAWN - DRP	REVISED -
PLOT DATE = *DATE*	CHECKED - VJD	REVISED -
	DATE - 03/14/2014	REVISED -

**STATE OF ILLINOIS
DEPARTMENT OF TRANSPORTATION**

**US ROUTE 30 LANDSCAPING PLANS
STATION 259+00 TO STATION 280+50**

SCALE: 1" = 50' SHEET NO. 1 OF 3 SHEETS STA. 259+00 TO STA. 280+50

F.A.P. RTE.	SECTION	COUNTY	TOTAL SHEETS	SHEET NO.
353	11-Y-A	COOK	354	162
CONTRACT NO. 60R19				

ILLINOIS FED. AID PROJECT