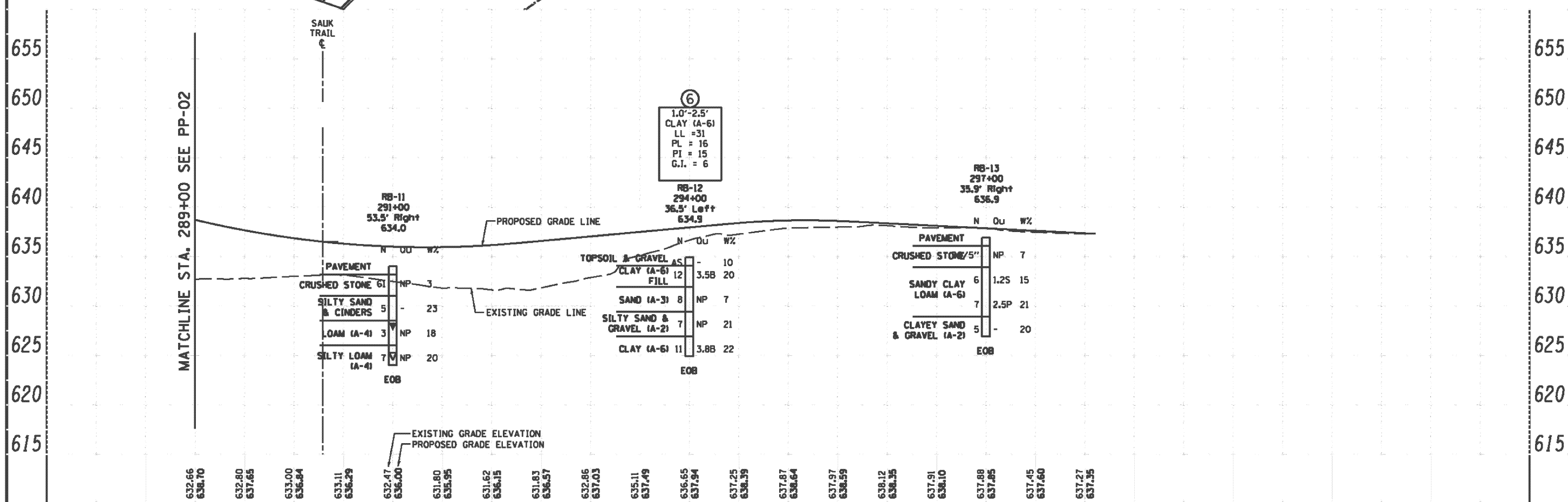
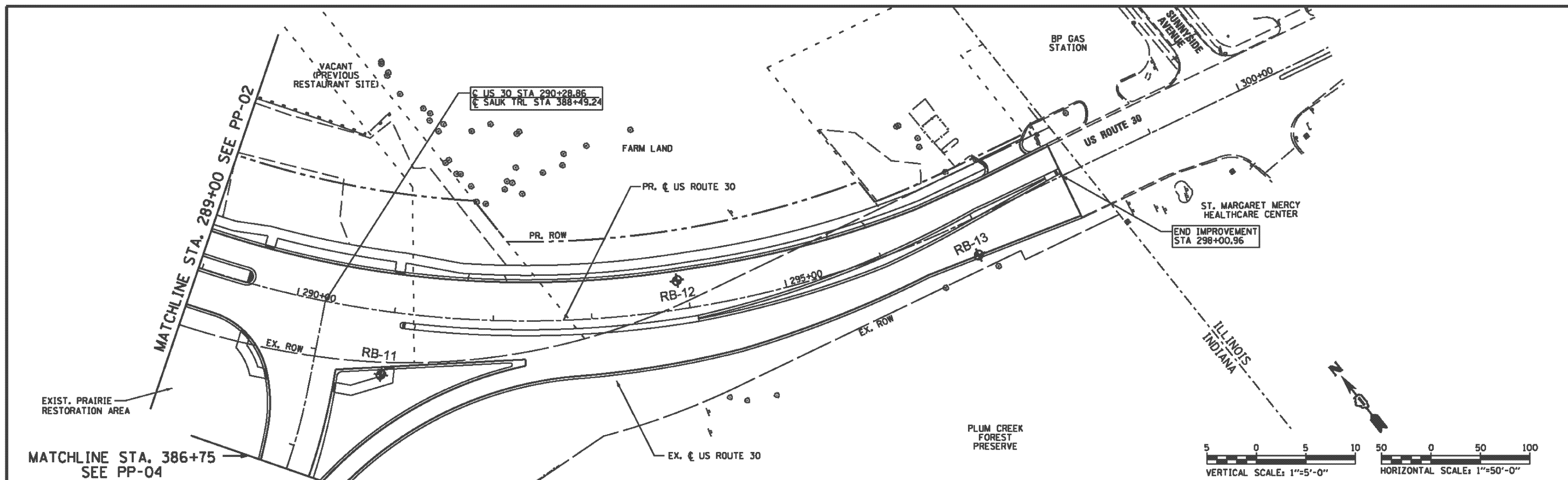


PLAN	
DATE	
BY	
DESIGNED	
DRAWN	
CHECKED	
DATE	
PROJECT	
NO.	

PROFILE	
DATE	
BY	
DESIGNED	
DRAWN	
CHECKED	
DATE	
PROJECT	
NO.	



 Geotechnical, Environmental & Civil Engineering 805 Ashgrove Court, Suite 204 Naperville, Illinois 60563 (630) 951-2000	USER NAME	DESIGNED - RWC	REVISED -	<b>STATE OF ILLINOIS</b> <b>DEPARTMENT OF TRANSPORTATION</b>	<b>US ROUTE 30 SOIL BORING PLAN AND PROFILE</b> <b>STATION 289+00 TO STATION 302+00</b>			F.A.J. RTE.	SECTION	COUNTY	TOTAL SHEETS	SHEET NO.	
	PLOT SCALE	DRAWN - RWC	REVISED -					353	11-Y-A	COOK	354	167	
	PLOT DATE	CHECKED - AJP	REVISED -					SCALE: 1"=50'H 1"=5'V SHEET NO. 3 OF 6 SHEETS STA. 289+00 TO STA. 302+00			CONTRACT NO. 60R19		
		DATE - 7/23/2012	REVISED -					ILLINOIS FED. AID PROJECT					