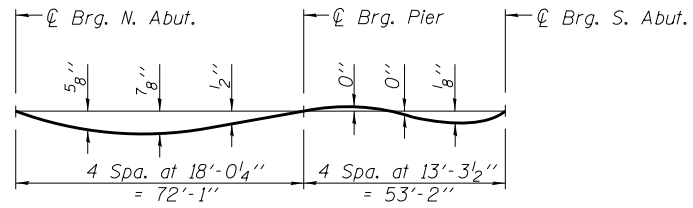


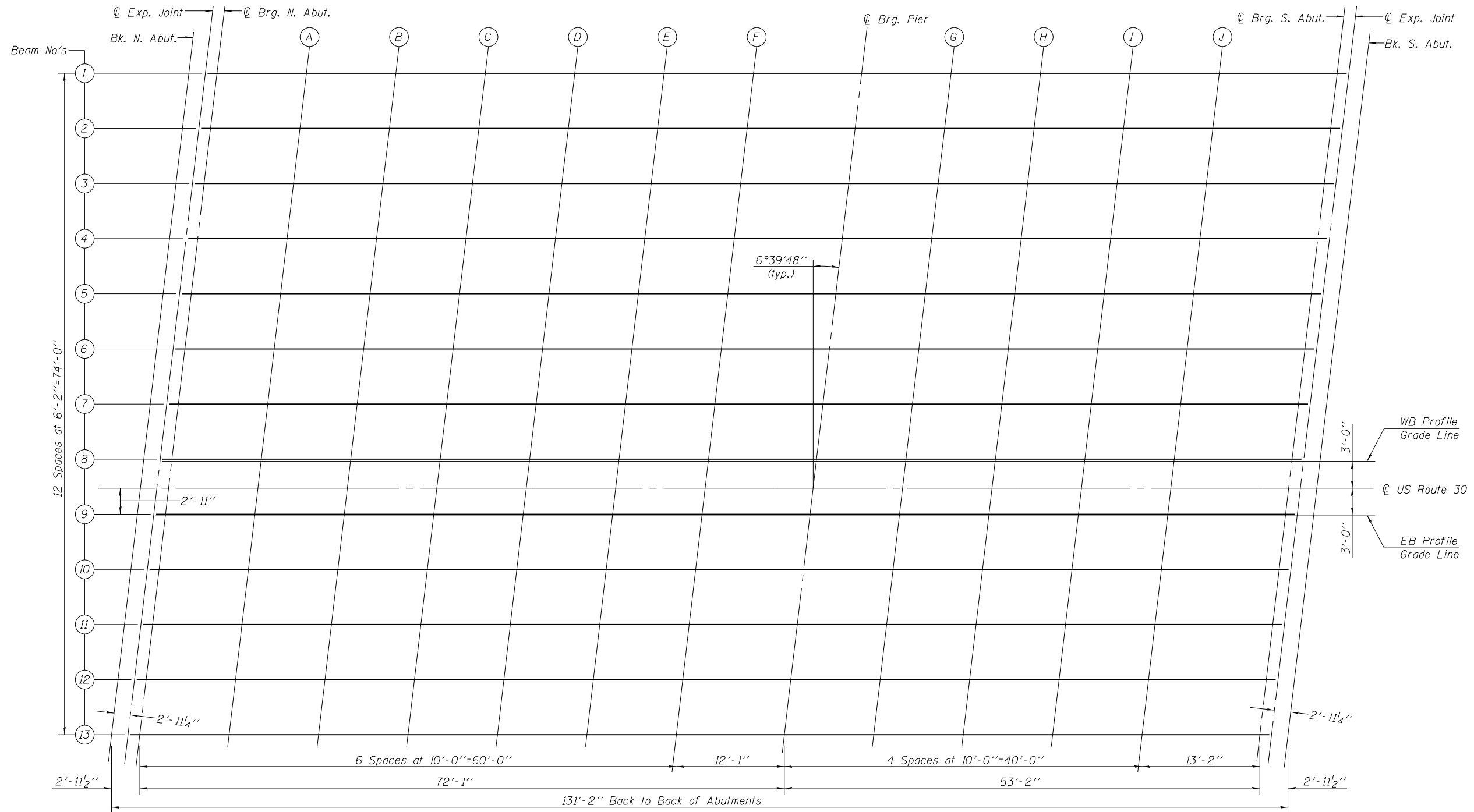
To determine "t": After all structural steel has been erected, elevations of the top flanges of the beams should be taken at intervals shown on sheets 4 and 5 of 35. These elevations subtracted from the "Theoretical Grade Elevations Adjusted for Dead Load Deflection" as shown on sheets 4 and 5 of 35, minus slab thickness, equals the fillet heights "t" above top flange of beams.

FILLET HEIGHTS



DEAD LOAD DEFLECTION DIAGRAM

(Includes weight of concrete only.)
 Note:
 The above deflections are not to be used in the field if the engineer is working from the "Theoretical Grade Elevations Adjusted for Dead Load Deflections" as shown on sheets 4 and 5 of 35.



DECK ELEVATION PLAN



USER NAME =	DESIGNED - WJV	REVISED
	CHECKED - CJB	REVISED
PLOT SCALE =	DRAWN - WJV	REVISED
PLOT DATE =	CHECKED - CJB	REVISED

STATE OF ILLINOIS
 DEPARTMENT OF TRANSPORTATION

TOP OF SLAB ELEVATIONS - I
 STRUCTURE NO. 016-1350
 SHEET NO. 3 OF 35 SHEETS

F.A.P. RTE.	SECTION	COUNTY	TOTAL SHEETS	SHEET NO.
353	11-Y-A	COOK	354	188
CONTRACT NO. 60R19				

ILLINOIS FED. AID PROJECT