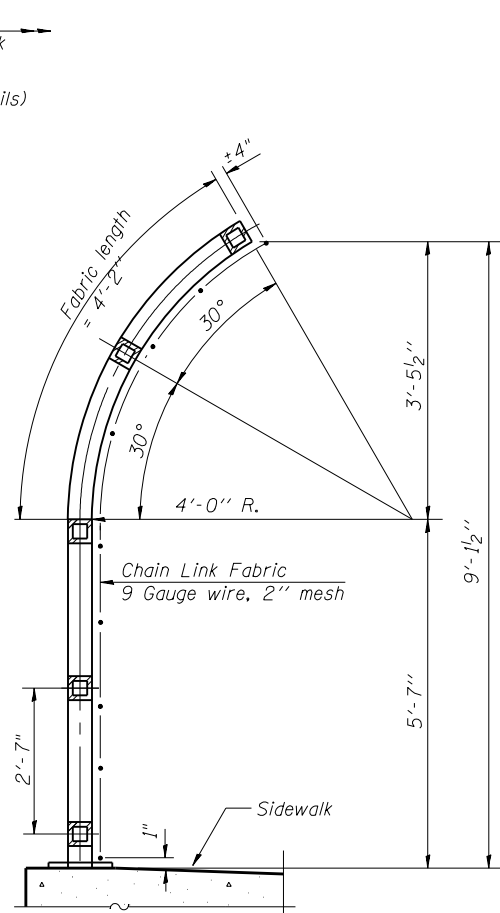
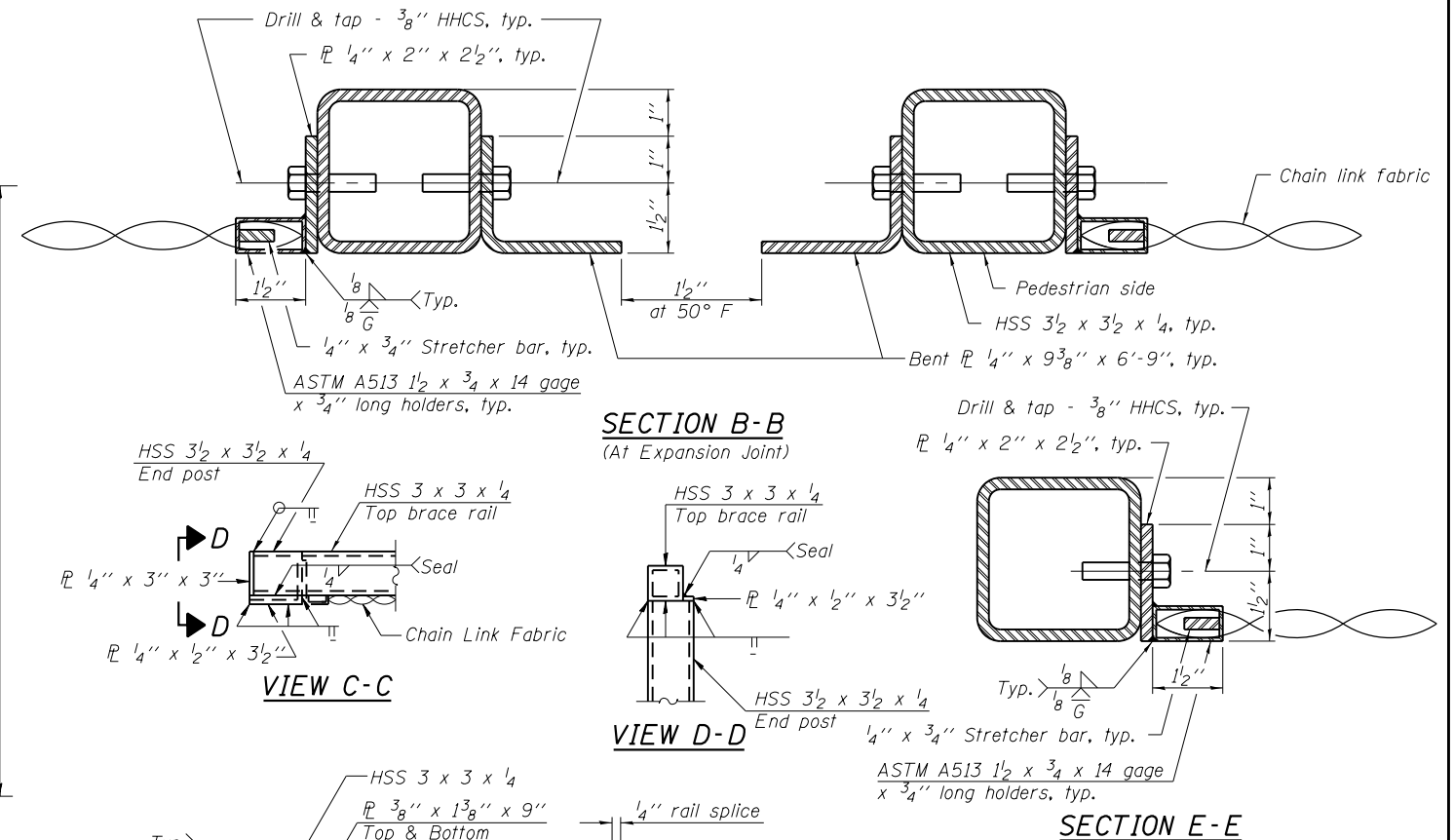


ELEVATION
(Inside Face)

*measured from east face of deck

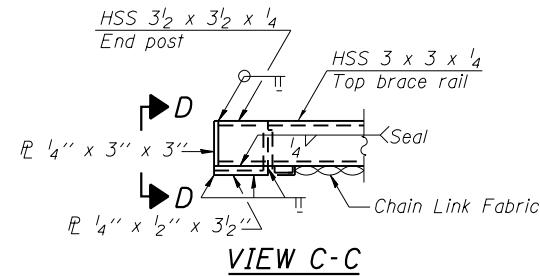


SECTION A-A



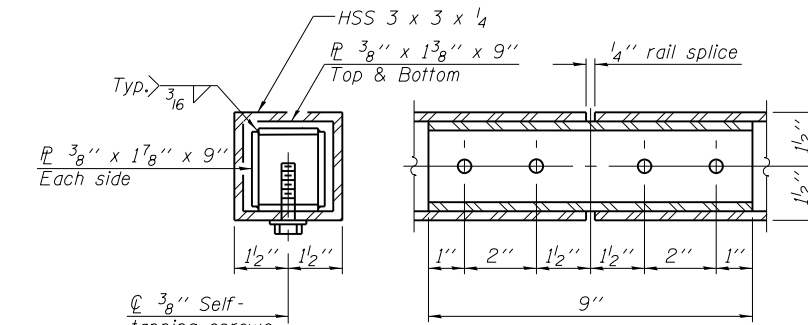
SECTION B-B
(At Expansion Joint)

SECTION E-E

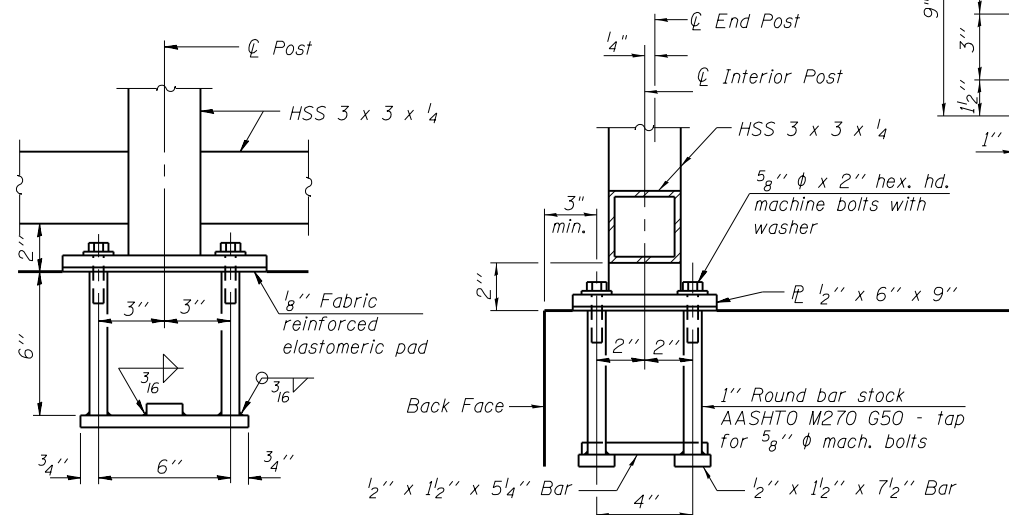


VIEW C-C

VIEW D-D

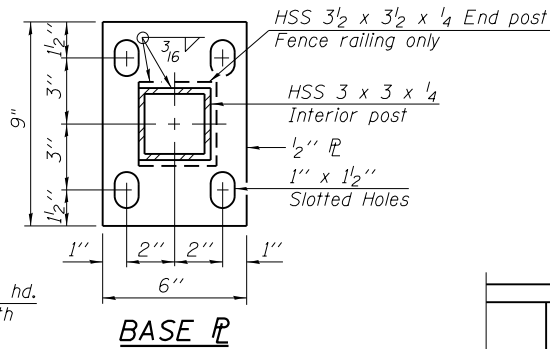


RAIL SPLICE

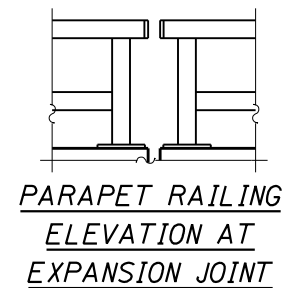


ANCHOR BOLT DETAILS

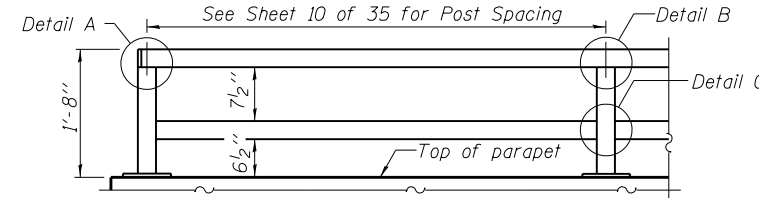
In lieu of the cast-in-place anchor device shown, the Contractor has the option of drilling and setting 5/8" diameter anchor rods according to Article 509.06 of the Standard Specifications. Embedment shall be according to the manufacturer's specifications.



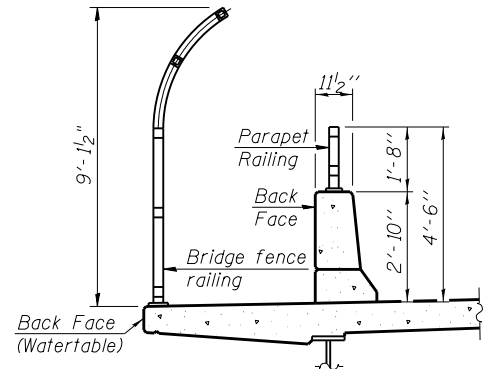
BASE PL



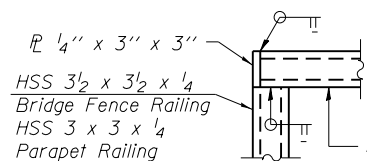
PARAPET RAILING ELEVATION AT EXPANSION JOINT



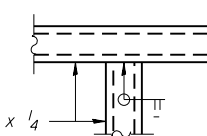
PARAPET RAILING ELEVATION
(Inside face of two element rail)



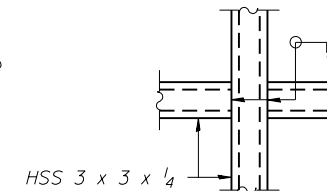
SECTION THRU DECK



DETAIL A



DETAIL B



DETAIL C

Notes:
All steel rail elements shall be galvanized according to Article 509.05 of the Standard Specifications.

BILL OF MATERIAL

Item	Unit	Quantity
Bridge Fence Railing (Sidewalk)	Foot	98
Parapet Railing	Foot	156



USER NAME =	DESIGNED - WJV	REVISED
PLOT SCALE =	CHECKED - CJB	REVISED
PLOT DATE =	DRAWN - WJV	REVISED
	CHECKED - CJB	REVISED

STATE OF ILLINOIS
DEPARTMENT OF TRANSPORTATION

BRIDGE FENCE RAILING, SIDEWALK MOUNTED
STRUCTURE NO. 016-1350

SHEET NO. 14 OF 35 SHEETS

F.A.P. RTE.	SECTION	COUNTY	TOTAL SHEETS	SHEET NO.
353	11-Y-A	COOK	354	199
				CONTRACT NO. 60R19
ILLINOIS FED. AID PROJECT				