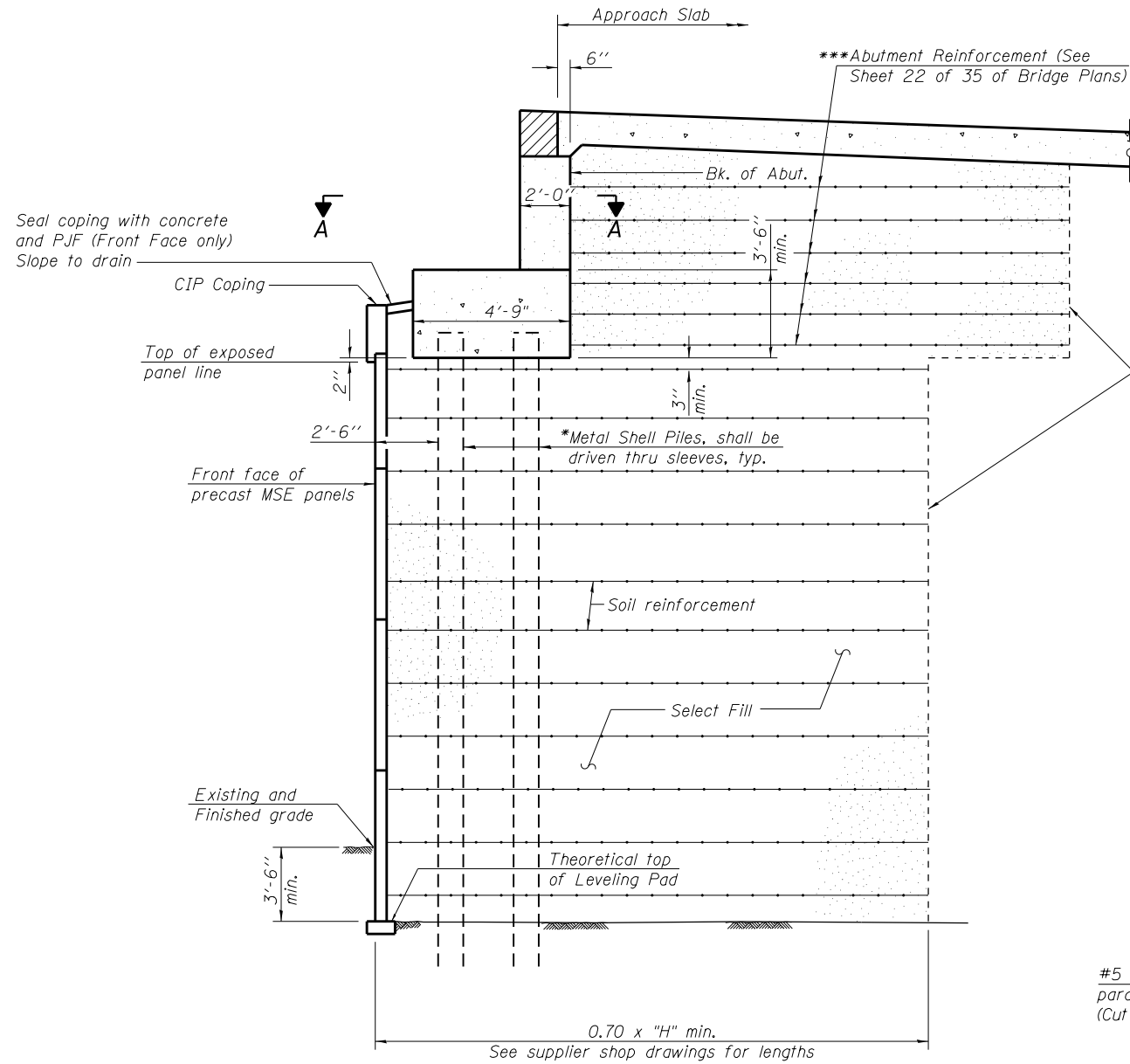


* In order to alleviate downdrag on the piles, the Contractor shall:

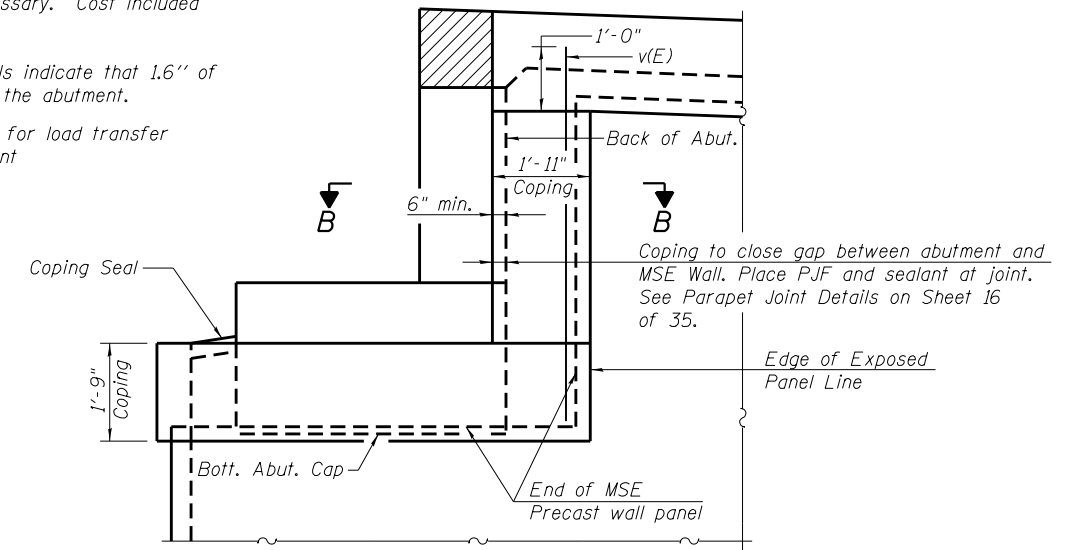
Construct the MSE walls first, wait ****6 months**, and then drive piles through sleeves that were placed before MSE wall construction. Place sleeves after removal of unsuitable material and before backfilling with Aggregate Subgrade Improvement where this is necessary. Cost included with Furnishing Metal Shell Piles, 14" ϕ x 0.25".

**Or until the settlement platforms for the MSE walls indicate that 1.6" of the estimated 2.0" of settlement has occurred at the abutment.

***MSE Wall Supplier to provide internal stability design for load transfer system to accommodate horizontal forces from abutment

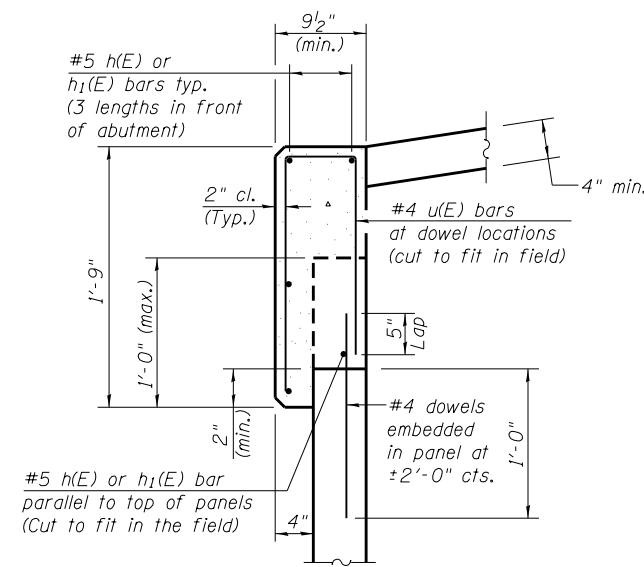


TYPICAL SECTION THRU ABUTMENT
(Horiz. dim. @ Rt. L's)

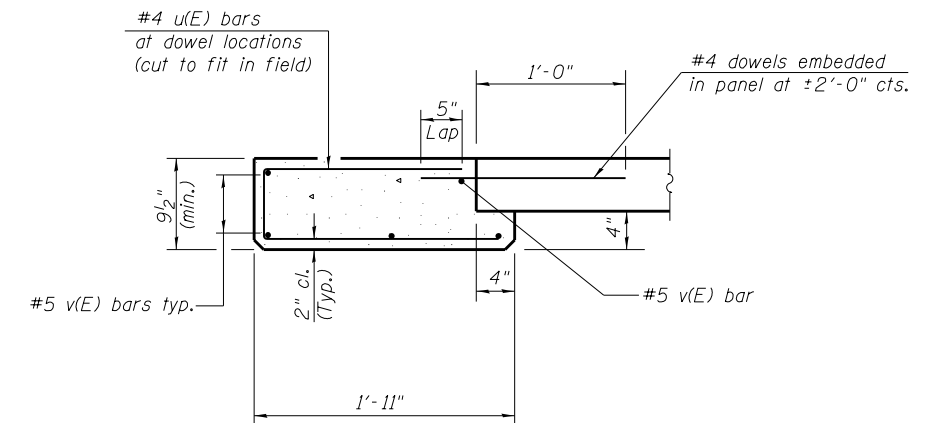


COPING AT SIDE OF ABUTMENT

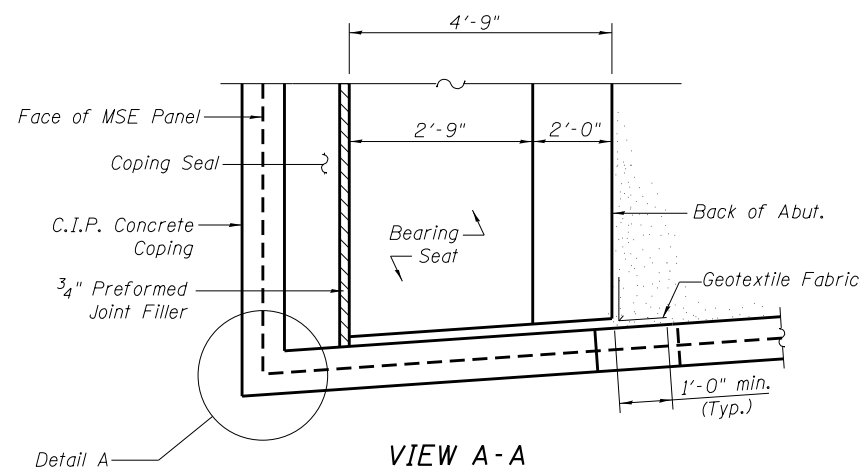
Reinforcement on Vertical Coping similar to Coping on Front Face of Abutment



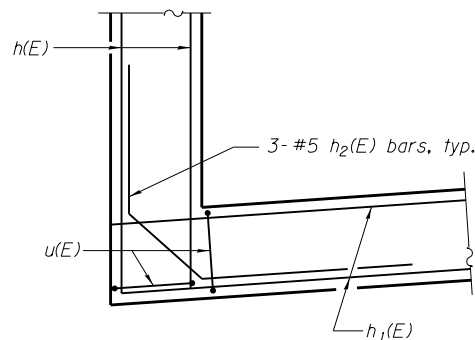
TYPICAL SECTION THRU ABUTMENT COPING



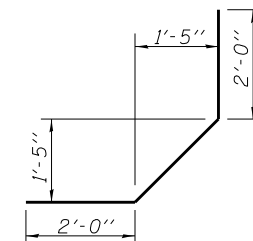
SECTION B-B



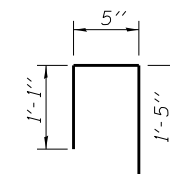
VIEW A-A



DETAIL A



BAR h2(E)



BAR u(E)

MIN. BAR LAP
#5 Bars = 2'-7"

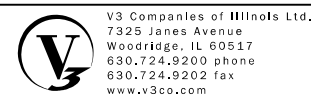
*****BAR LIST FOR WALL COPING AROUND ABUTMENT**

Bar	No.	Size	Length	Shape	
h(E)	15	#5	28'-4"	—	Front of Abuts.
h1(E)	10	#5	8'-0"	—	Side of Abuts.
h2(E)	6	#5	6'-0"	┌	
v(E)	10	#5	7'-8"	—	Cut to fit as req'd
u(E)	56	#4	2'-11"	U	

***For information only

Notes:

The cost of coping seal, cast-in-place concrete coping, reinforcement bars and dowel bars for the coping around the abutments will be included with bid pay item "Mechanically Stabilized Earth Retaining Wall". The Contractor may substitute a precast coping at their own expense, the details of which must be included in the shop plans and approved by the Engineer. Contractor shall contact the MSE wall supplier to verify that added crane/pile driving equipment loading on top of MSE wall is acceptable should the contractor choose to drive piles from the top of the MSE walls.



USER NAME =	DESIGNED - EVS	REVISED
PLOT SCALE =	CHECKED - WJV	REVISED
PLOT DATE =	DRAWN - EVS	REVISED
	CHECKED - WJV	REVISED

**STATE OF ILLINOIS
DEPARTMENT OF TRANSPORTATION**

**MSE WALL DETAILS AT ABUTMENT
STRUCTURE NO. 016-1279**

SHEET NO. 7 OF 35 SHEETS

F.A.P. RTE.	SECTION	COUNTY	TOTAL SHEETS	SHEET NO.
353	11-Y-A	COOK	354	227
CONTRACT NO. 60R19				

ILLINOIS FED. AID PROJECT