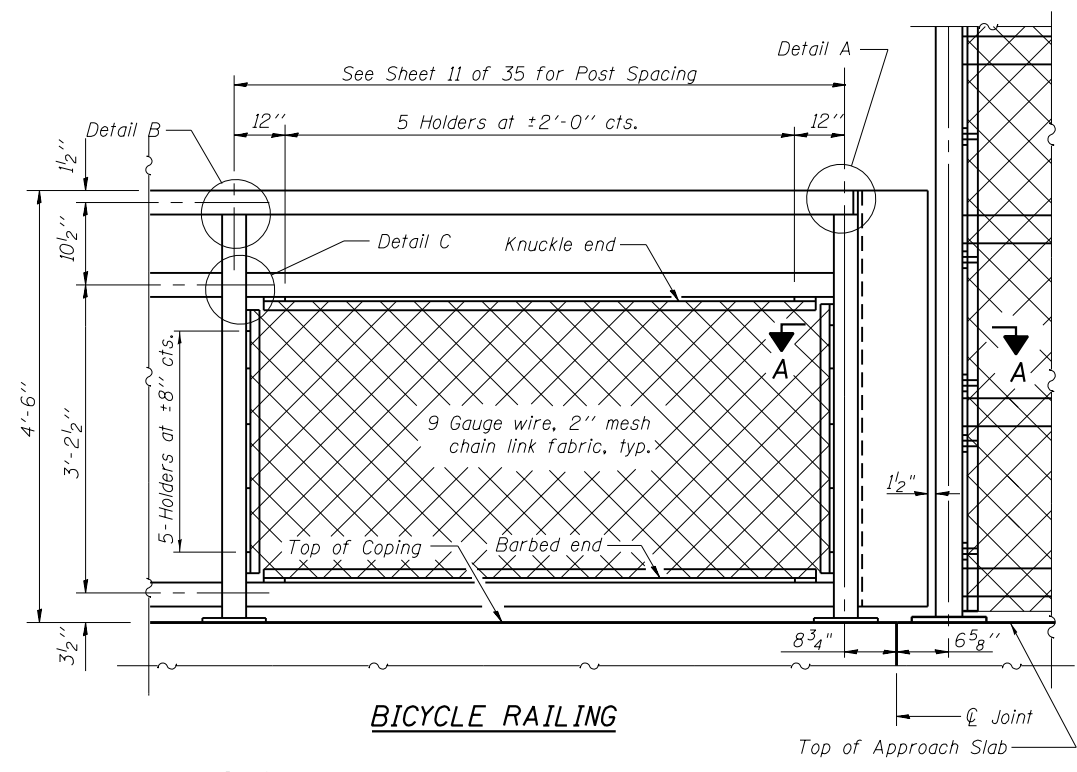
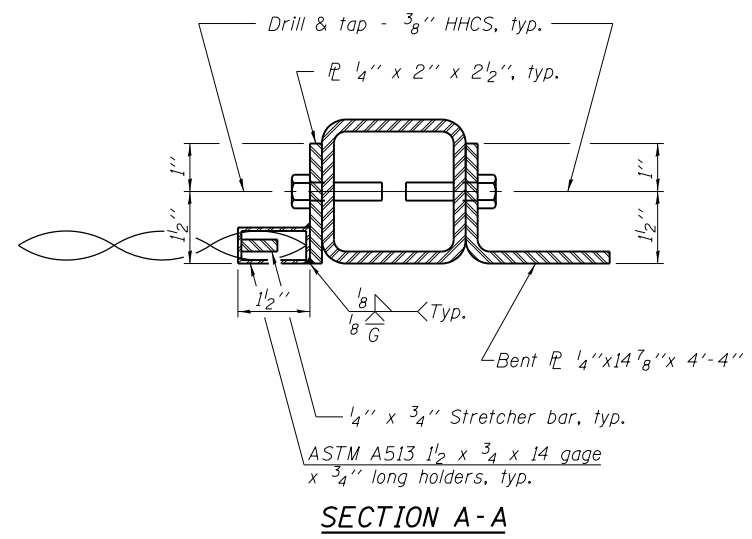


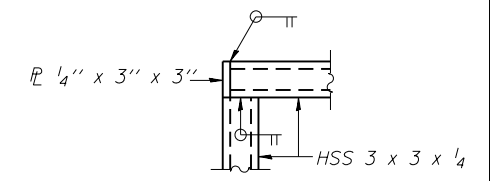
Notes:
All steel rail elements shall be galvanized according to Article 509.05 of the Standard Specifications.



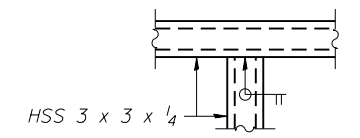
BICYCLE RAILING



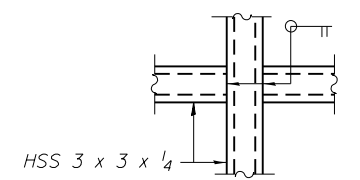
SECTION A-A



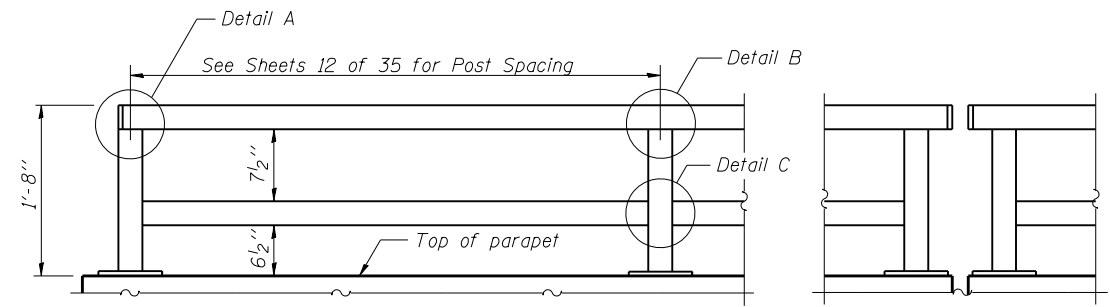
DETAIL A



DETAIL B



DETAIL C

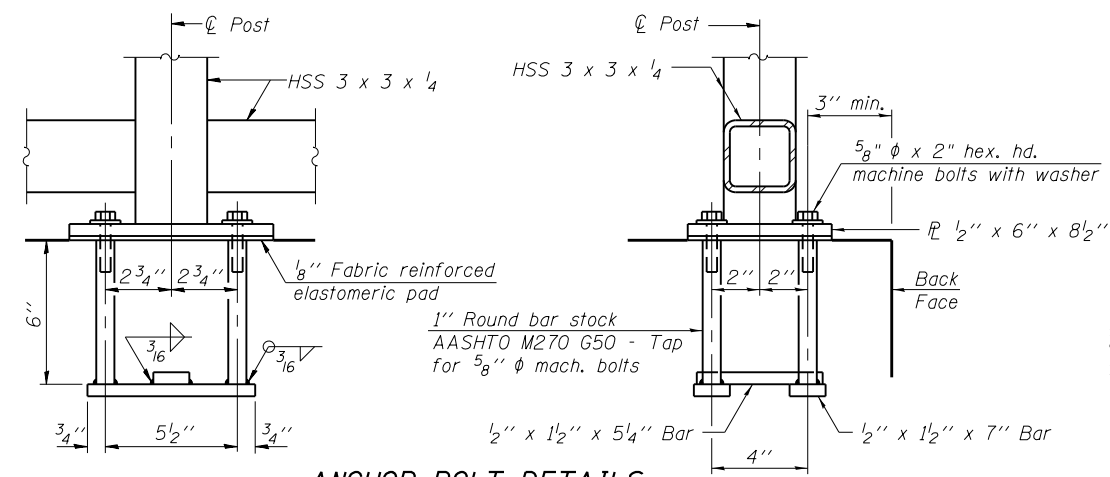


PARAPET RAILING

ELEVATION
(Inside Face of Two Element Rail)

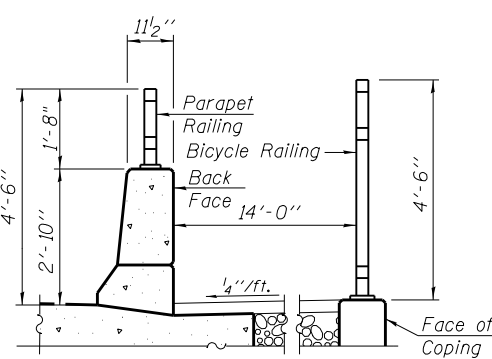
PARAPET RAILING

ELEVATION AT EXPANSION JOINT
(Two Element Rail Shown - Three Element Rail Similar)

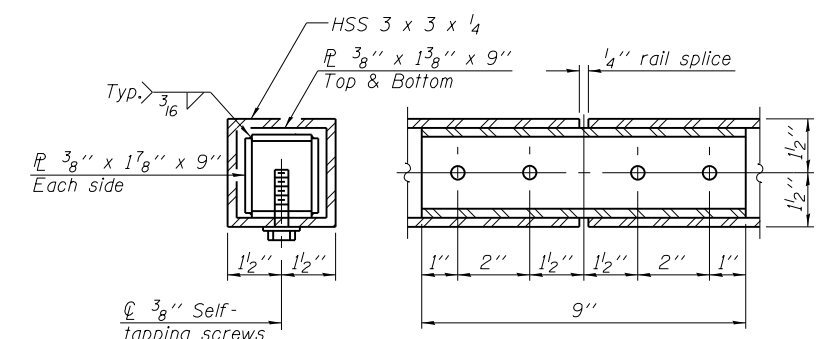


ANCHOR BOLT DETAILS

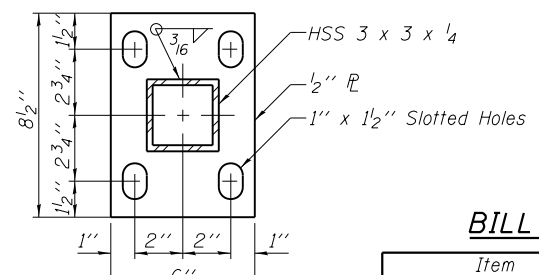
In lieu of the cast-in-place anchor device shown, the Contractor has the option of drilling and setting 5/8" ∅ anchor rods according to Article 509.06 of the Standard Specifications. Embedment shall be according to the manufacturer's specifications.



SECTION THRU PATH NORTH OF THE BRIDGE



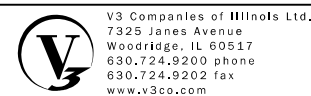
RAIL SPLICE



BASE PL

BILL OF MATERIAL

Item	Unit	Quantity
Bicycle Railing	Foot	466
Parapet Railing	Foot	462



V3 Companies of Illinois Ltd.
7325 James Avenue
Woodridge, IL 60517
630.724.9200 phone
630.724.9202 fax
www.v3co.com

USER NAME =
DESIGNED - EVS
CHECKED - WJV
PLOT SCALE =
DRAWN - EVS
PLOT DATE =
CHECKED - WJV

REVISED
REVISED
REVISED
REVISED

STATE OF ILLINOIS
DEPARTMENT OF TRANSPORTATION

BICYCLE RAILING
STRUCTURE NO. 016-1279

SHEET NO. 17 OF 35 SHEETS

F.A.P. R.T.E. 353 SECTION 11-Y-A COUNTY COOK TOTAL SHEETS 354 SHEET NO. 237 CONTRACT NO. 60R19 ILLINOIS FED. AID PROJECT