

GENERAL NOTES

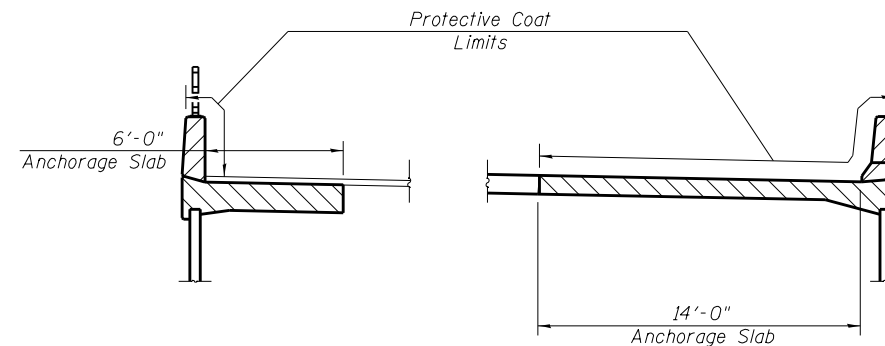
Reinforcement Bars designated (E) shall be epoxy coated.
 See Special Provisions for Mechanically Stabilized Earth Retaining Wall design and construction requirements.
 The gradations and capping of the Aggregate Subgrade Improvement used to replace the unsuitable material shall be approved by the Engineer.
 M.S.E. wall supplier to provide internal stability design for load transfer system to accommodate the posts for the traffic barrier terminals at the north end of the southeast wall. See Roadway Plans for exact location of traffic barrier terminals and IDOT Highway Standards 630301-06 and 631031-11 for details. Coordinate with Contractor installing the traffic barrier terminals. Cost included with Mechanically Stabilized Earth Retaining Wall.
 Slipforming of the parapets is not allowed.

TOTAL BILL OF MATERIAL

ITEM	UNIT	TOTAL
Mechanically Stabilized Earth Retaining Wall	Sq. Ft.	23,581
Structure Excavation	Cu. Yd.	3,763
Removal and Disposal of Unsuitable Material for Structures	Cu. Yd.	4,538
Aggregate Subgrade Improvement	Cu. Yd.	4,538
Concrete Structures	Cu. Yd.	359.6
Concrete Superstructure	Cu. Yd.	83.3
Protective Coat	Sq. Yd.	1,237
Reinforcement Bars, Epoxy Coated	Pound	63,340
Parapet Railing	Foot	499
Name Plates	Each	1
Geotechnical Fabric for Ground Stabilization	Sq. Yd.	3,517
Porous Granular Embankment	Cu. Yd.	21,976

INDEX OF SHEETS

- 1 General Plan & Elevation
- 2 General Notes, Index of Sheets and Total Bill of Material
- 3 MSE Retaining Walls General Layout
- 4 Unsuitable Material Removal and Backfill Layout
- 5 MSE Wall Plan & Elevation
- 6 MSE Wall Elevations
- 7 MSE Wall Details at Abutments
- 8 MSE Wall Cross Section
- 9 MSE Wall Cross Section Tables
- 10 Drainage Structure Details
- 11 Southwest MSE Wall Anchorage Slab
- 12 Southwest Parapet Elevation
- 13 Southeast MSE Wall Anchorage Slab
- 14 Southeast Parapet Elevation
- 15 Anchorage Slab and Parapet Details
- 16 Bicycle Railing
- 17-25 Soil Boring Logs

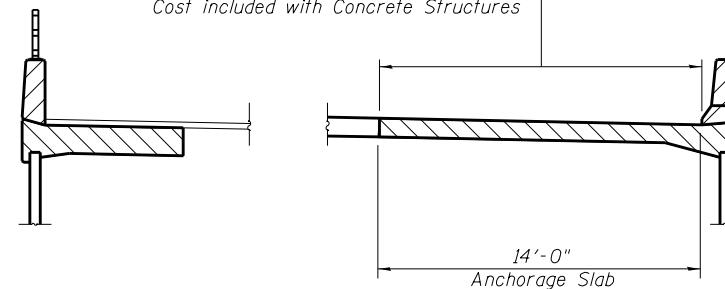


**PROTECTIVE COAT LIMITS
SOUTH WALL**

**ANCHORAGE SLAB
PAY ITEM LEGEND**

- Paid as Concrete Superstructure
- Paid as Concrete Structures

For Final Finish see Article 420.09 of the Standard Specifications, Cost included with Concrete Structures



**FINAL FINISH LIMITS
SOUTH WALL**

STATION 282+60.94
 -288+00.00
 BUILT BY
 STATE OF ILLINOIS
 F.A.P. RT. 353 SEC. 11-Y-A
 LOADING HL-93
 STRUCTURE NO. 016-1280

NAME PLATE
 See Std. 515001