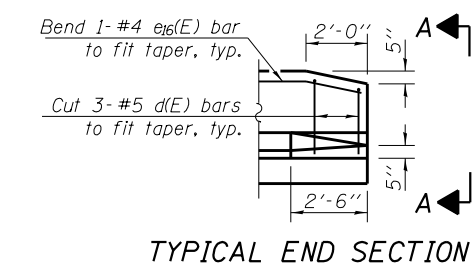
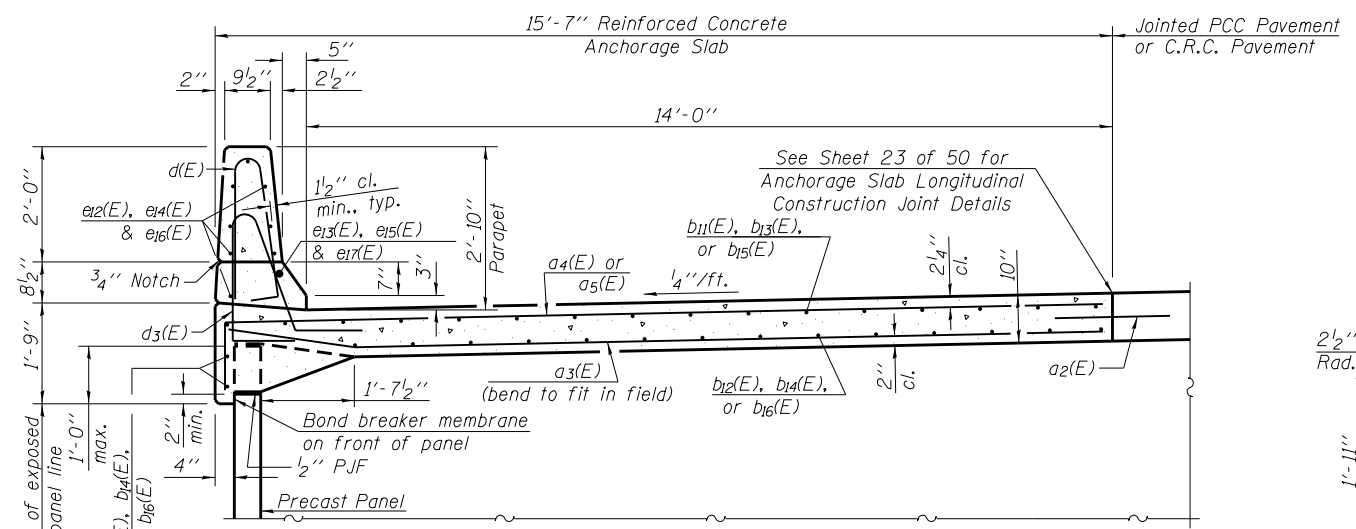


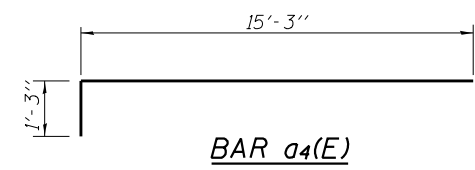
SOUTHWEST PARAPET ELEVATION
(Looking West)



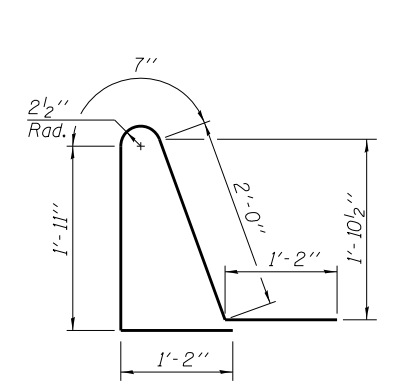
TYPICAL END SECTION



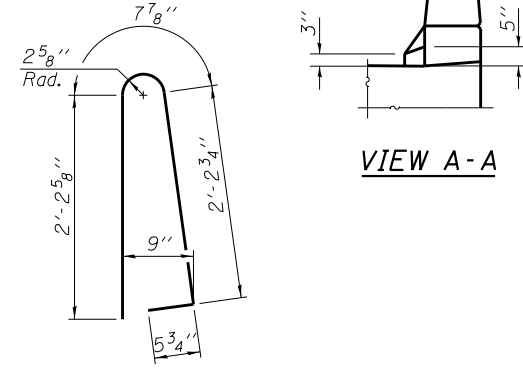
SECTION THRU SOUTHWEST PARAPET AND ANCHORAGE SLAB



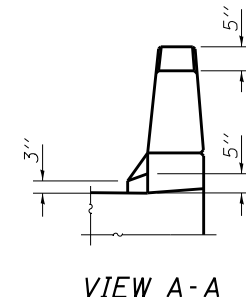
BAR a4(E)



BAR d3(E)



BAR d(E)



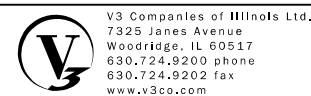
VIEW A-A

SOUTHWEST ANCHORAGE SLAB AND PARAPET BILL OF MATERIAL

Bar	No.	Size	Length	Shape
* a2(E)	179	#6	2'-6"	—
a3(E)	365	#4	15'-3"	—
a4(E)	365	#6	16'-6"	—
a5(E)	365	#6	15'-3"	—
a9(E)	16	#5	4'-0"	—
b11(E)	48	#5	37'-2"	—
b12(E)	64	#4	28'-2"	—
b13(E)	240	#5	15'-0"	—
b14(E)	240	#4	15'-0"	—
b15(E)	32	#5	12'-3"	—
b16(E)	32	#4	12'-3"	—
d(E)	398	#5	5'-7"	—
d3(E)	398	#5	6'-10"	—
e12(E)	32	#4	26'-4"	—
e13(E)	4	#8	26'-4"	—
e14(E)	120	#4	15'-3"	—
e15(E)	15	#8	15'-3"	—
e16(E)	16	#4	12'-5"	—
e17(E)	2	#8	12'-5"	—
Reinforcement Bars, Epoxy Coated		Pound	39,120	
Concrete Superstructure		Cu. Yds.	41.3	
Concrete Structures		Cu. Yds.	186.9	

*Weight not included in Reinf. Bars, Epoxy Coated. Cost included with PCC Pav't, 10" (Jointed) and Bridge CRC Pav't. See Roadway drawings.

Notes:
See Sheet 15 of 25 for Joint Details.



USER NAME =	DESIGNED - EVS	REVISED
PLOT SCALE =	CHECKED - WJV	REVISED
PLOT DATE =	DRAWN - EVS	REVISED
	CHECKED - WJV	REVISED

STATE OF ILLINOIS
DEPARTMENT OF TRANSPORTATION

SOUTHWEST PARAPET ELEVATION
STRUCTURE NO. 016-1280

SHEET NO. 12 OF 25 SHEETS

F.A.P. RTE.	SECTION	COUNTY	TOTAL SHEETS	SHEET NO.
353	11-Y-A	COOK	354	267
CONTRACT NO. 60R19				

ILLINOIS FED. AID PROJECT