

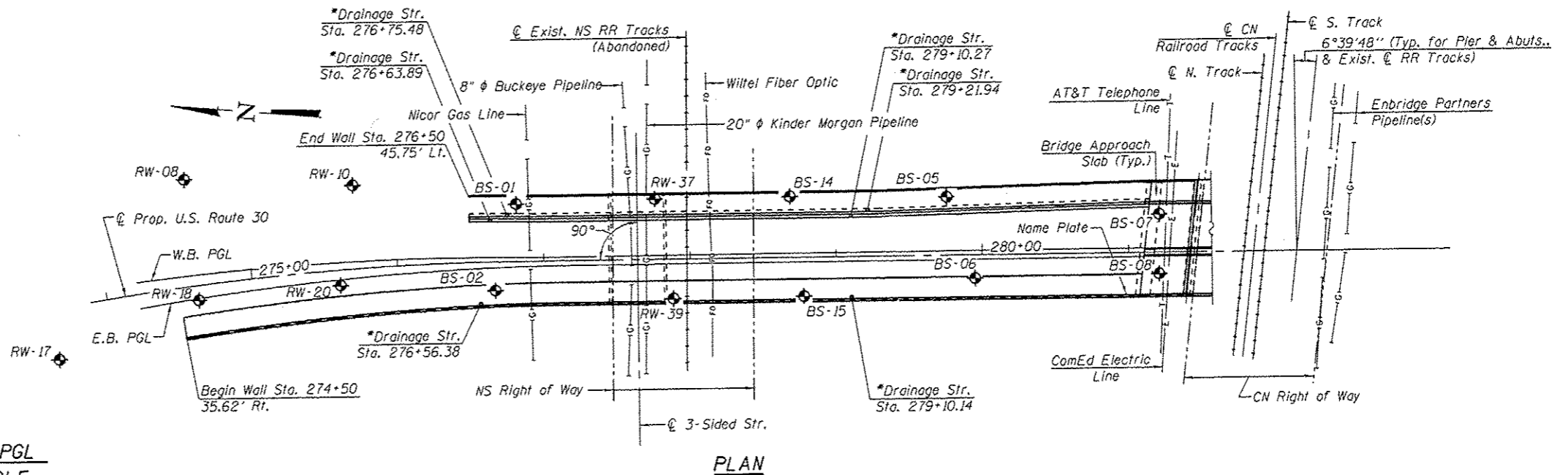
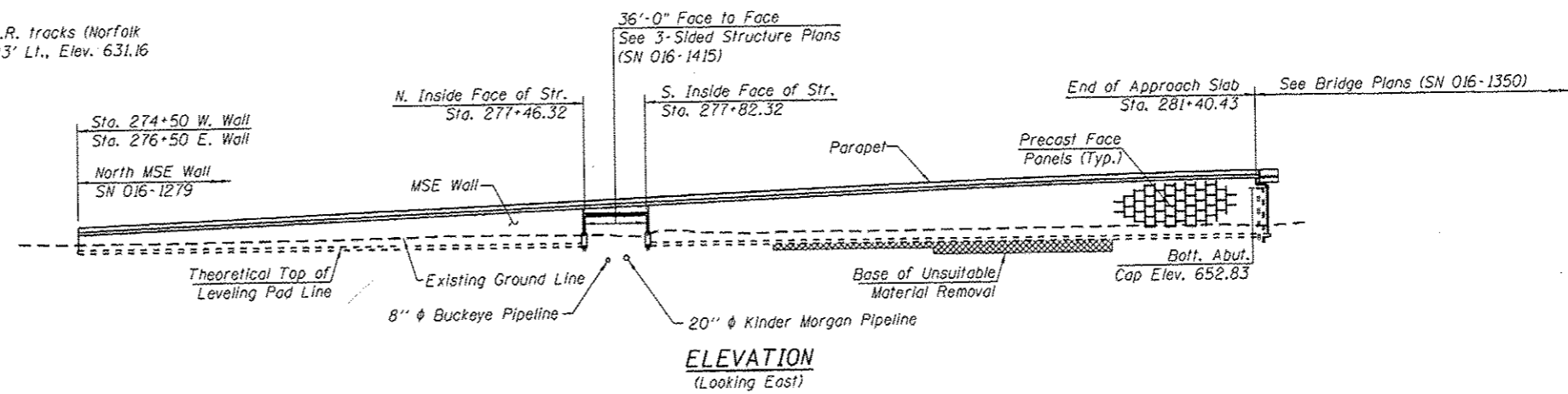
Bench Marks:

BM #3 - Cut square in N.E. corner of large utility structure S. of the N. set of R.R. tracks (Norfolk Southern Railroad) and near the E. R.O.W. line of U.S. Rt. 30 Sta. 278+54.41, 71.23' Lt., Elev. 631.16

BM #103 - Cut square at corner of traffic manhole on E. side of U.S. Rt. 30 and E. line of Sauk Trail Sta. 291+34.10, 39.95' Lt., Elev. 633.67

Existing Structure: None

Stage traffic to be maintained along existing US 30. See Roadway Plans for maintenance of traffic.

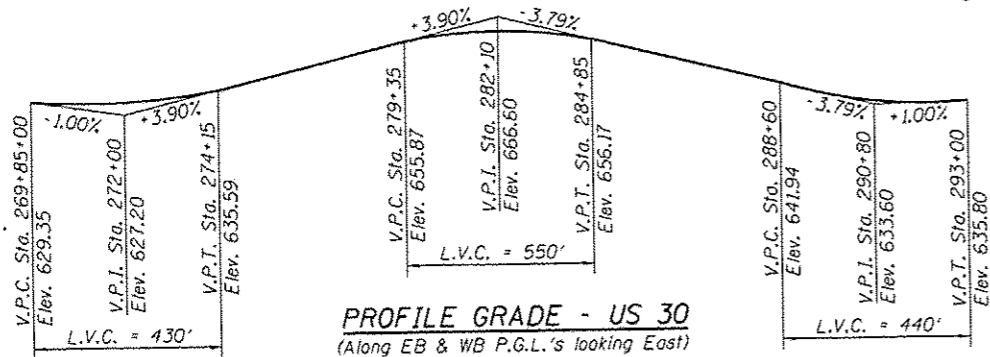


US RTE. 30, EB PGL AND WB PGL STATIONS AND ELEVATIONS TABLE FOR ADJACENT BRIDGE (SN 016-1350)

Transverse	US RTE. 30		EB PGL		WB PGL	
	Station	Elev.	Station	Elev.	Station	Elev.
Bk. of N. Abut.	281+39.93	660.99	281+39.58	660.93	281+40.28	660.93
Q. Brg. N. Abut.	281+42.89	661.02	281+42.54	660.96	281+43.24	660.96
Q. Pier	282+14.97	661.38	282+14.62	661.31	282+15.32	661.31
Q. Brg. S. Abut.	282+68.14	661.17	282+67.79	661.11	282+68.49	661.11
Bk. of S. Abut.	282+71.09	661.15	282+70.74	661.09	282+71.44	661.08

APPROVED
For Structural Adequacy Only

Carl Ruppert
Engineer of Bridges & Structures



CURVE #1 DATA

Q. Prop. U.S. Route 30)
 $\Delta = 31^{\circ}05'52''$
 $D = 3^{\circ}10'59''$
 $T = 500.84'$
 $L = 976.97'$
 $E = 68.38'$
 $R = 1800.00'$
 S.E. = Normal Crown
 P.C. = Sta. 267+05.42
 P.T. = Sta. 276+82.39
 P.I. = Sta. 272+06.26

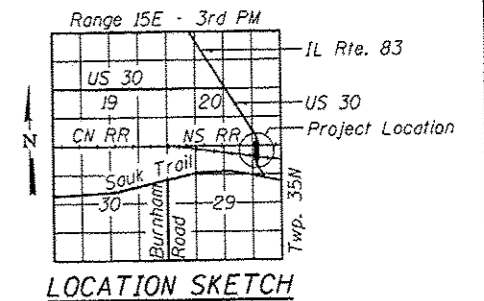
LOADING HL-93
 Allow 50#/sq. ft. for future wearing surface.
DESIGN SPECIFICATIONS
 AASHTO LRFD Bridge Design Specifications, 6th Edition.

DESIGN STRESSES

FIELD UNITS
 $f'_c = 3,500$ psi
 $f_y = 60,000$ psi (Reinforcement)
 $f'_c = 4,500$ psi (Precast Panels)

SEISMIC DATA

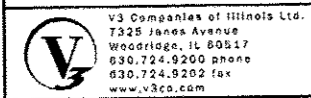
Seismic Performance Zone (SPZ) = 1
 Design Spectral Acceleration at 1.0 sec. (S_{D1}) = 0.093g
 Design Spectral Acceleration at 0.2 sec. (S_{D5}) = 0.152g
 Soil Site Class = D



GENERAL PLAN & ELEVATION
NORTH MSE WALLS
 F.A.P. RTE. 353 - SEC. 11-Y-A
 COOK COUNTY
 STATION 274+50 TO 281+52.27
 STRUCTURE NO. 016-1279



Bill Vegrzyn 8/12/2013
 Expires 11-30-14



USER NAME *	DESIGNED - EVS	REVISED
PLOT SCALE *	CHECKED - WJV	REVISED
PLOT DATE *	REVISOR - EVS	REVISED
	DRAWN - WJV	REVISED
	CHECKED - WJV	REVISED

STATE OF ILLINOIS
 DEPARTMENT OF TRANSPORTATION

SHEET NO. 1 OF 35 SHEETS

F.A.P. RTE. 353	SECTION 11-Y-A	COUNTY COOK	TOTAL SHEETS 354	SHEET NO. 221
CONTRACT NO. 60R19				
ILLINOIS FED. AID PROJECT				