

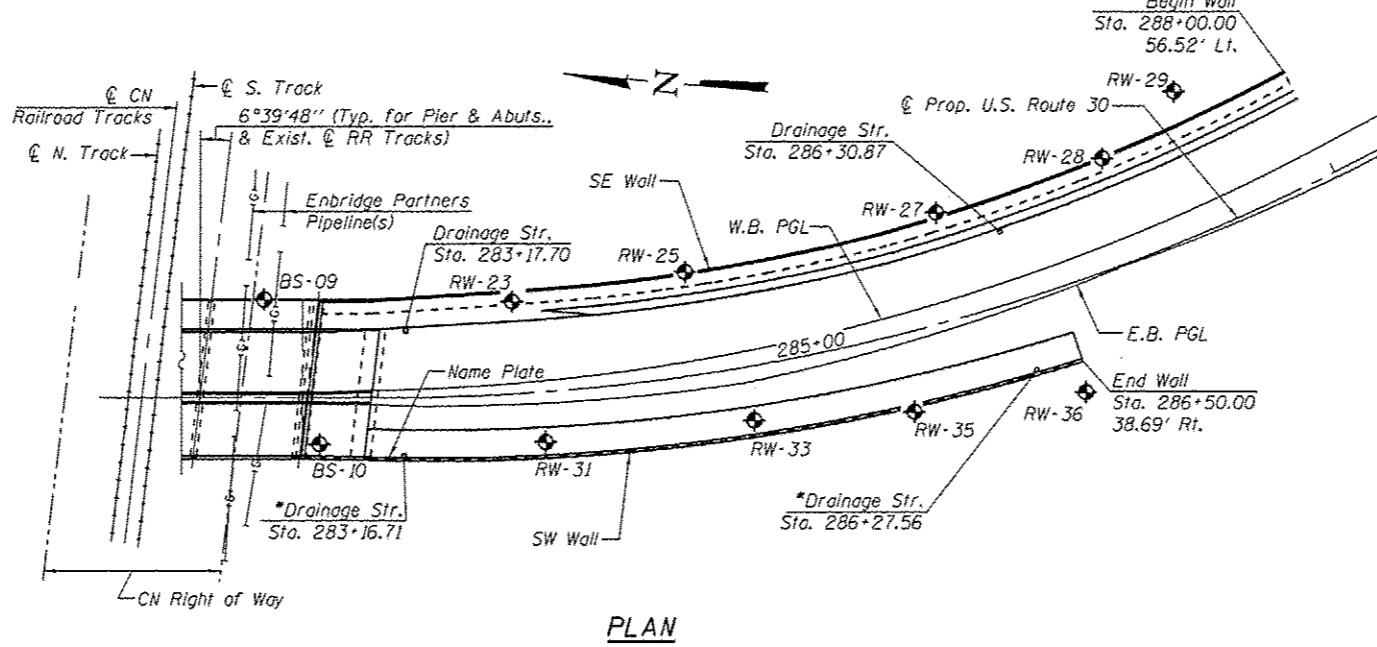
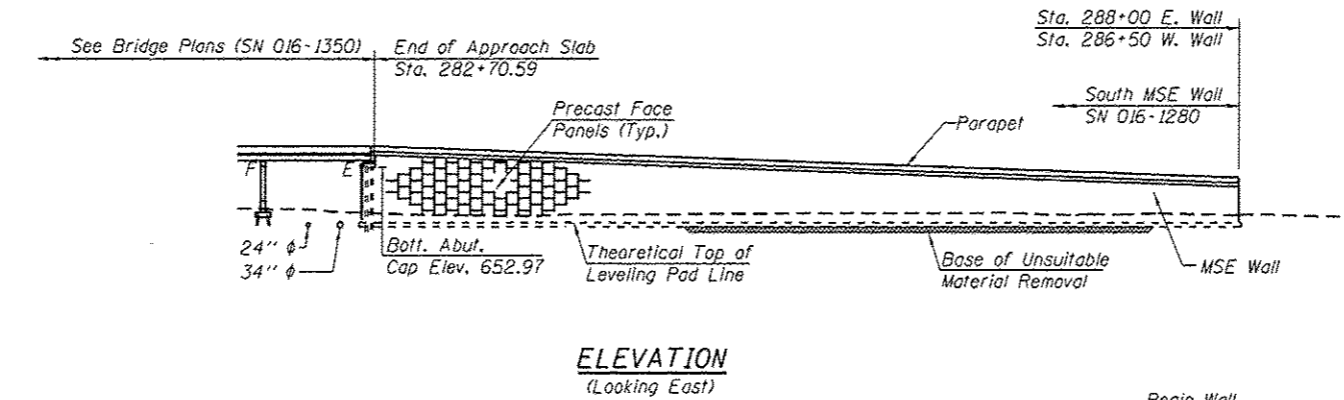
Bench Mark:

BM #3 - Cut square in N.E. corner of large utility structure S. of the N. set of R.R. tracks (Norfolk Southern Railroad) and near the E. R.O.W. line of U.S. Rt. 30 Sta. 278+54.41, 71.23' Lt., Elev. 631.16

BM #103 - Cut square at corner of traffic manhole on E. side of U.S. Rt. 30 and E. line of Sauk Trail Sta. 291+34.10, 39.95' Lt., Elev. 633.67

Existing Structure: None

Stage traffic to be maintained along existing US 30. See Roadway Plans for maintenance of traffic.

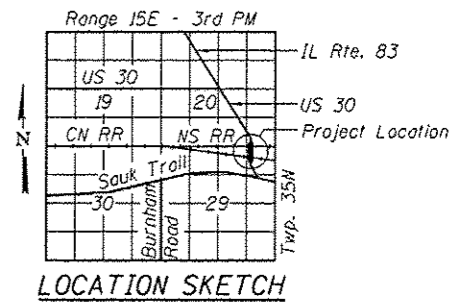


*See Sheet 10 of 25 for Drainage Structure Details

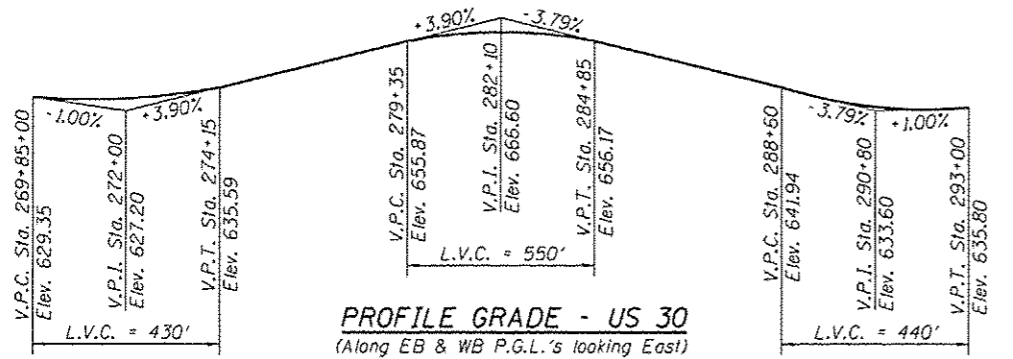
APPROVED
For Structural Adequacy Only
Bill Veas
Engineer of Bridges & Structures

US RTE. 30, EB PGL AND WB PGL STATIONS AND ELEVATIONS TABLE FOR ADJACENT BRIDGE (SN 016-1350)

Longitudinal	US Rte. 30		EB PGL		WB PGL	
	Station	Elev.	Station	Elev.	Station	Elev.
Bk. of N. Abut.	281+39.93	660.99	281+39.58	660.93	281+40.28	660.93
© Brg. N. Abut.	281+42.89	661.02	281+42.54	660.96	281+43.24	660.96
© Pier	282+14.97	661.38	282+14.62	661.31	282+15.32	661.31
© Brg. S. Abut.	282+68.14	661.17	282+67.79	661.11	282+68.49	661.11
Bk. of S. Abut.	282+71.09	661.15	282+70.74	661.09	282+71.44	661.08



GENERAL PLAN & ELEVATION SOUTH MSE WALLS
F.A.P. RTE. 353 - SEC. 11-Y-A
COOK COUNTY
STATION 282+60.94 TO 288+00
STRUCTURE NO. 016-1280



CURVE #2 DATA
(©/© Prop. U.S. Route 30)
 $\Delta = 76^{\circ}-29'-05''$
 $D = 5^{\circ}-30'-33''$
 $T = 819.64'$
 $L = 1388.30'$
 $E = 284.17'$
 $R = 1040.00'$
S.E. = Normal Crown
P.C. = Sta. 283+10.09
P.T. = Sta. 296+98.39
P.I. = Sta. 291+29.73

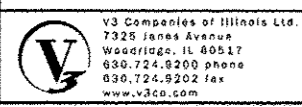
LOADING HL-93
Allow 50#/sq. ft. for future wearing surface.
DESIGN SPECIFICATIONS
AASHTO LRFD Bridge Design Specifications, 6th Edition.

DESIGN STRESSES
FIELD UNITS
 $f'_c = 3,500$ psi
 $f_y = 60,000$ psi (Reinforcement)
 $f'_c = 4,500$ psi (Precast Panels)

SEISMIC DATA
Seismic Performance Zone (SPZ) = 1
Design Spectral Acceleration at 1.0 sec. (S_{D1}) = 0.093g
Design Spectral Acceleration at 0.2 sec. (S_{D5}) = 0.152g
Soil Site Class = D



Bill Veas 8/12/2013
Expires 11-30-14



USER NAME	DESIGNED - EVS	REVISED
PLOT SCALE	CHECKED - WJV	REVISED
PLOT DATE	DRAWN - EVS	REVISED
	CHECKED - WJV	REVISED

STATE OF ILLINOIS
DEPARTMENT OF TRANSPORTATION

SHEET NO. 1 OF 25 SHEETS

F.A.P. RTE.	SECTION	COUNTY	TOTAL SHEETS	SHEET NO.
353	11-Y-A	COOK	354	256
CONTRACT NO. 60R19				

ILLINOIS FED. AID PROJECT