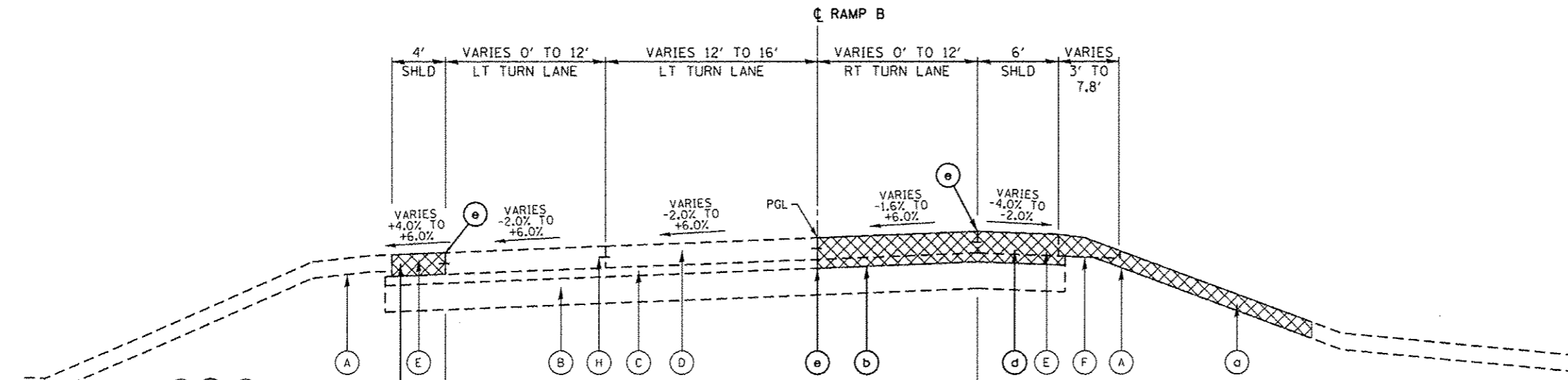


**EXISTING RAMP "B"**

STA 13+90.00 TO STA 15+90.00

**EXISTING LEGEND**

- (A) 12" TOP SOIL
- (B) 12" AGGREGATE SUBGRADE IMPROVEMENT
- (C) 4" STABILIZED SUBBASE - HOT-MIX ASPHALT
- (D) 9 3/4" PCC PAVEMENT
- (E) 9 3/4" PCC SHOULDERS
- (F) 9 3/4" AGGREGATE SHOULDERS
- (G) COMB. CONCRETE CURB AND GUTTER, B-6.24
- (H) TIE BARS
- (I) TURF MEDIAN

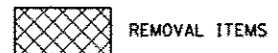


**EXISTING RAMP "B"**

STA 15+90.00 TO STA 23+13.03

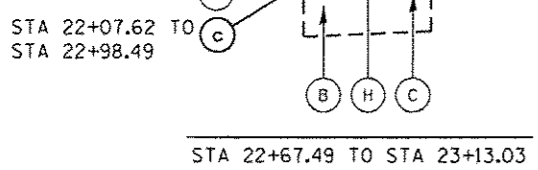
**REMOVAL LEGEND**

- (a) TOP SOIL EXCAVATION
- (b) PAVEMENT REMOVAL
- (c) COMB. CURB & GUTTER REMOVAL
- (d) PAVED SHOULDER REMOVAL
- (e) SAW CUTS (INCIDENTAL)

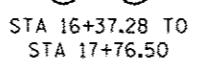


**NOTE:**

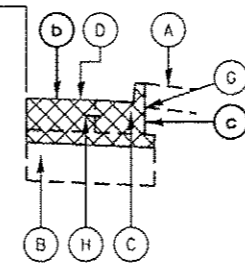
SEE REMOVAL SHEETS FOR LOCATIONS OF PAVEMENT REMOVAL FOR PRECAST CONCRETE PAVEMENT SLABS.



STA 22+67.49 TO STA 23+13.03

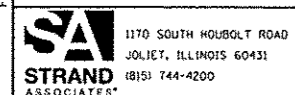


STA 16+37.28 TO STA 17+76.50



STA 22+48.06 TO STA 23+13.03

FILE NAME = S:\A\16328-6395\16316\055\Micro\10400\_Sheets\60W13-1st-1000.dgn



USER NAME = dennisw	DESIGNED - JLB	REVISED -
MODEL NAME = Default	DRAWN - DJW	REVISED -
PLOT SCALE = 10.0000 "/>		

CHECKED - BMA	REVISI
DATE - 12/17/13	REVISI

**STATE OF ILLINOIS  
DEPARTMENT OF TRANSPORTATION**

**TYPICAL SECTIONS**

SCALE: NTS SHEET 1 OF 7 SHEETS STA. TO STA.

F.A.P. RTE. 575	SECTION 14-N	COUNTY WILL	TOTAL SHEETS 163	SHEET NO. 18
CONTRACT NO. 60W13			ILLINOIS FED. AID PROJECT	