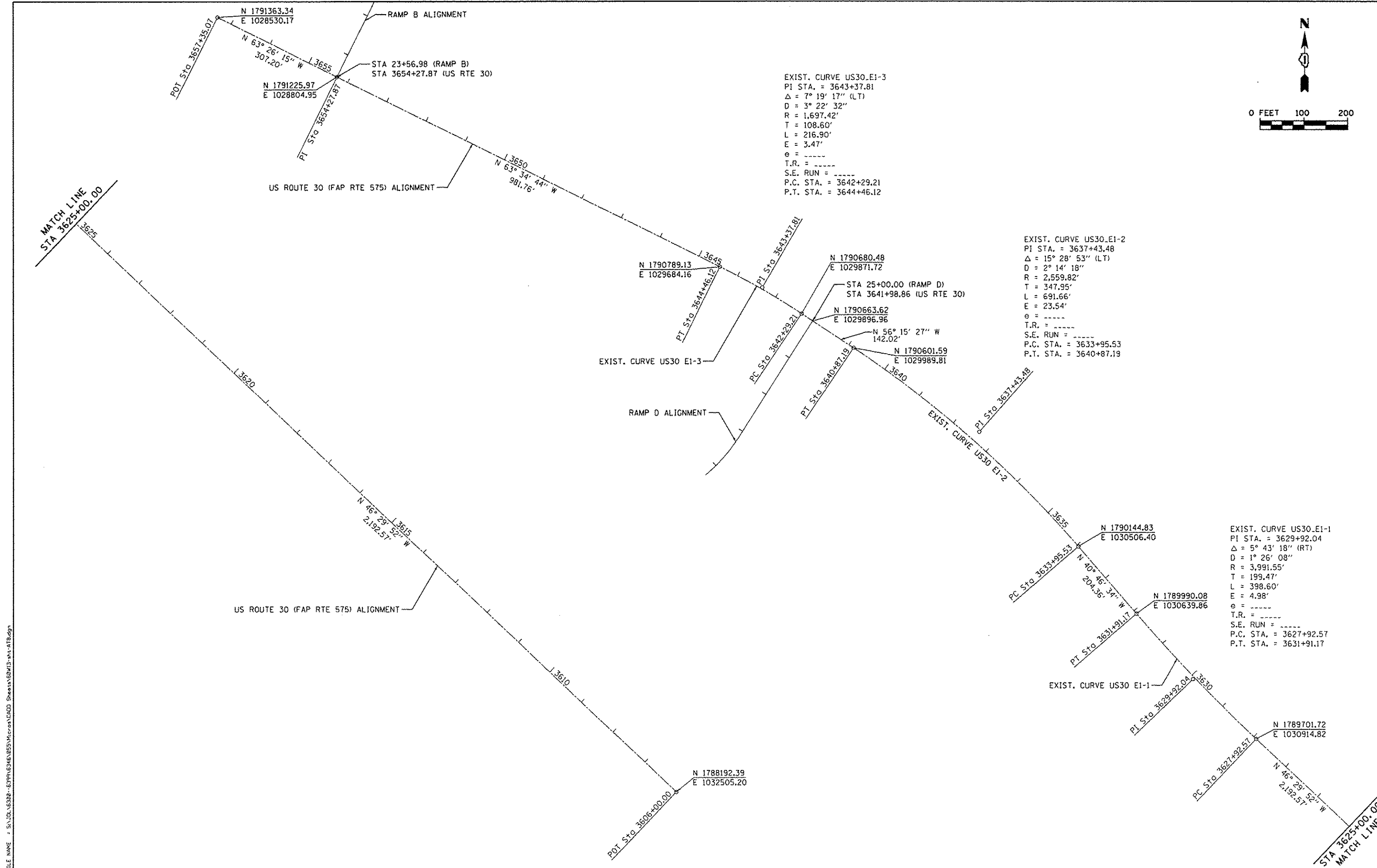


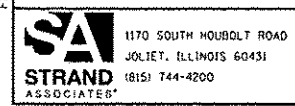
EXIST. CURVE US30-E1-3
 PI STA. = 3643+37.81
 $\Delta = 7^\circ 19' 17''$ (LT)
 $D = 3^\circ 22' 32''$
 $R = 1,697.42'$
 $T = 108.60'$
 $L = 216.90'$
 $E = 3.47'$
 $e = \text{-----}$
 T.R. = -----
 S.E. RUN = -----
 P.C. STA. = 3642+29.21
 P.T. STA. = 3644+46.12

EXIST. CURVE US30-E1-2
 PI STA. = 3637+43.48
 $\Delta = 15^\circ 28' 53''$ (LT)
 $D = 2^\circ 14' 18''$
 $R = 2,559.82'$
 $T = 347.95'$
 $L = 691.66'$
 $E = 23.54'$
 $e = \text{-----}$
 T.R. = -----
 S.E. RUN = -----
 P.C. STA. = 3633+95.53
 P.T. STA. = 3640+87.19

EXIST. CURVE US30-E1-1
 PI STA. = 3629+92.04
 $\Delta = 5^\circ 43' 18''$ (RT)
 $D = 1^\circ 26' 08''$
 $R = 3,991.55'$
 $T = 199.47'$
 $L = 398.60'$
 $E = 4.98'$
 $e = \text{-----}$
 T.R. = -----
 S.E. RUN = -----
 P.C. STA. = 3627+92.57
 P.T. STA. = 3631+91.17



FILE NAME: S:\101\6328-63P\1016328\6355\1016328.dwg



USER NAME = dennissw	DESIGNED - JLB	REVISED -
MODEL NAME = Default	DRAWN - DJW	REVISED -
PLOT SCALE = 200.0000 / in.	CHECKED - BMA	REVISED -
PLOT DATE = 12/18/2013	DATE - 12/17/13	REVISED -

**STATE OF ILLINOIS
DEPARTMENT OF TRANSPORTATION**

US ROUTE 30 HORIZONTAL ALIGNMENT

SCALE: 1" = 100' SHEET 2 OF 3 SHEETS STA. TO STA.

F.A.P. RTE. = 575	SECTION = 14-N	COUNTY = WILL	TOTAL SHEETS = 163	SHEET NO. = 27
CONTRACT NO. 60W13			ILLINOIS FED. AID PROJECT	