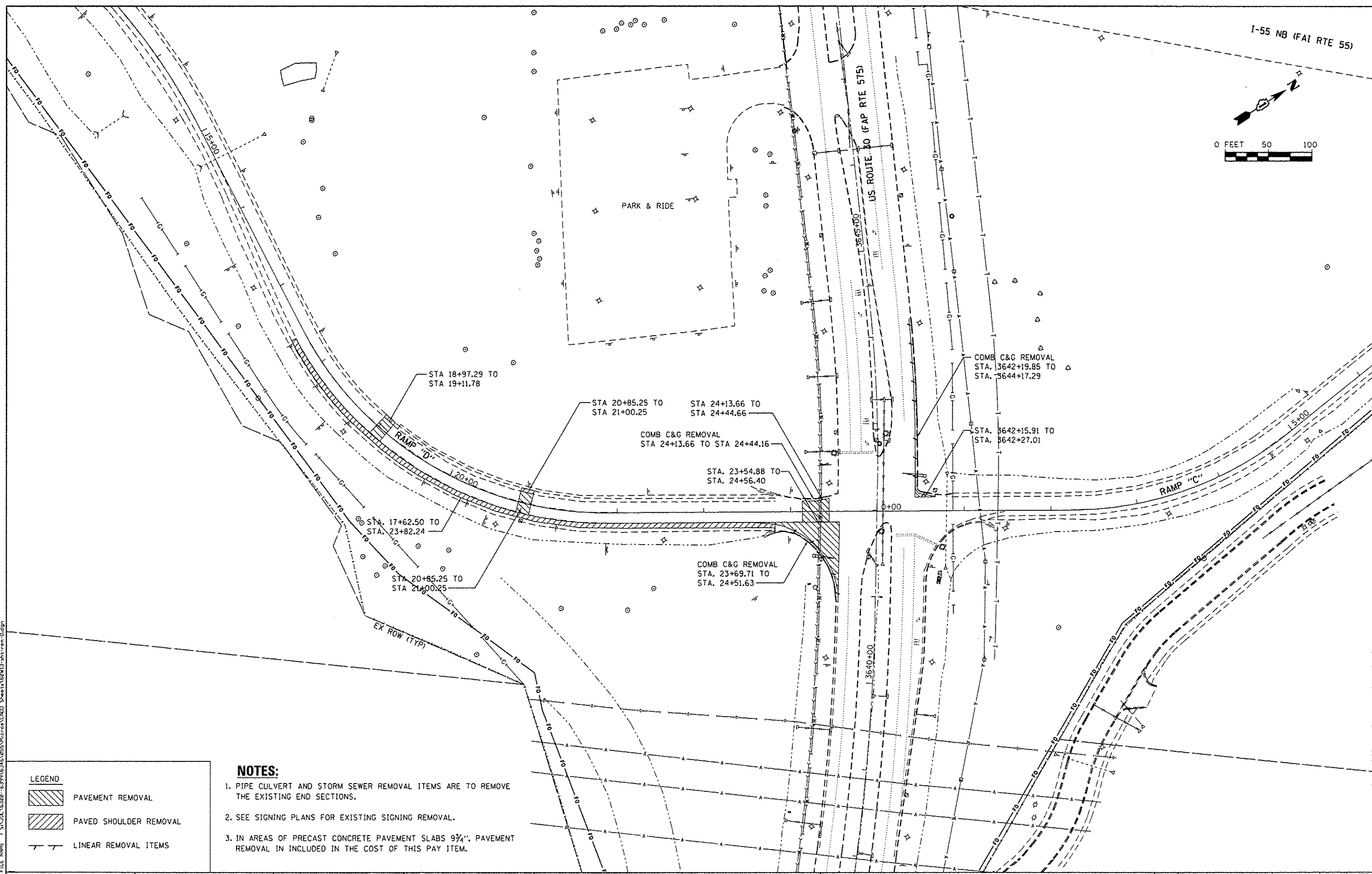
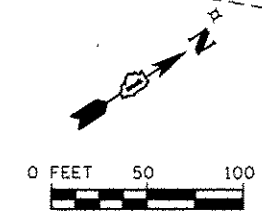


I-55 NB (FAI RTE 55)

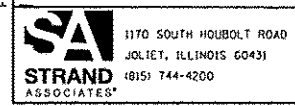


**LEGEND**

	PAVEMENT REMOVAL
	PAVED SHOULDER REMOVAL
	LINEAR REMOVAL ITEMS

- NOTES:**
1. PIPE CULVERT AND STORM SEWER REMOVAL ITEMS ARE TO REMOVE THE EXISTING END SECTIONS.
  2. SEE SIGNING PLANS FOR EXISTING SIGNING REMOVAL.
  3. IN AREAS OF PRECAST CONCRETE PAVEMENT SLABS 9 3/4", PAVEMENT REMOVAL IS INCLUDED IN THE COST OF THIS PAY ITEM.

FILE NAME = S:\JUL\_16328-6391\6328\BSS\Micro\13000\_Sheet158M13-11-11-11.dwg



USER NAME = dennisw	DESIGNED - JLB	REVISED -
MODEL NAME = Default	DRAWN - DJW	REVISED -
PLOT SCALE = 100.0000' / 1" = 100'	CHECKED - BMA	REVISED -
PLOT DATE = 1/22/2014	DATE - 12/17/13	REVISED -

**STATE OF ILLINOIS  
DEPARTMENT OF TRANSPORTATION**

**REMOVAL PLAN  
RAMP "D"**

SCALE: 1" = 50' SHEET 2 OF 2 SHEETS STA. TO STA.

F.A.P. RTE. 575	SECTION 14-N	COUNTY WILL	TOTAL SHEETS 163	SHEET NO. 30
CONTRACT NO. 60W13			ILLINOIS FED. AID PROJECT	