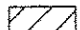







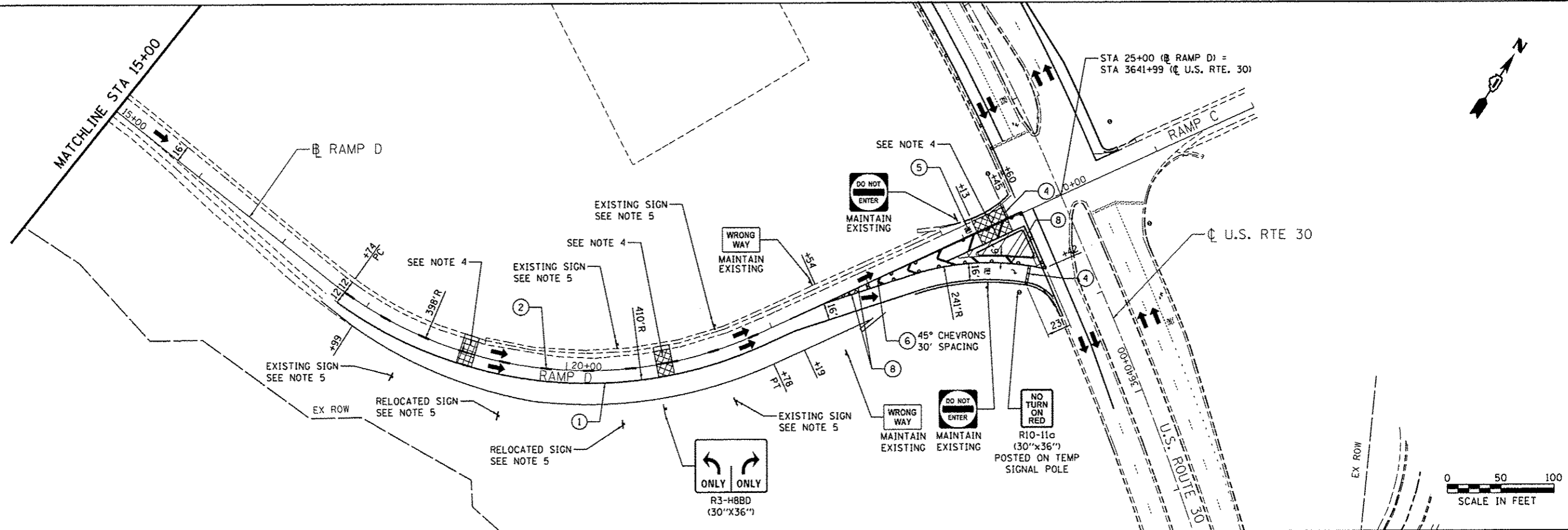
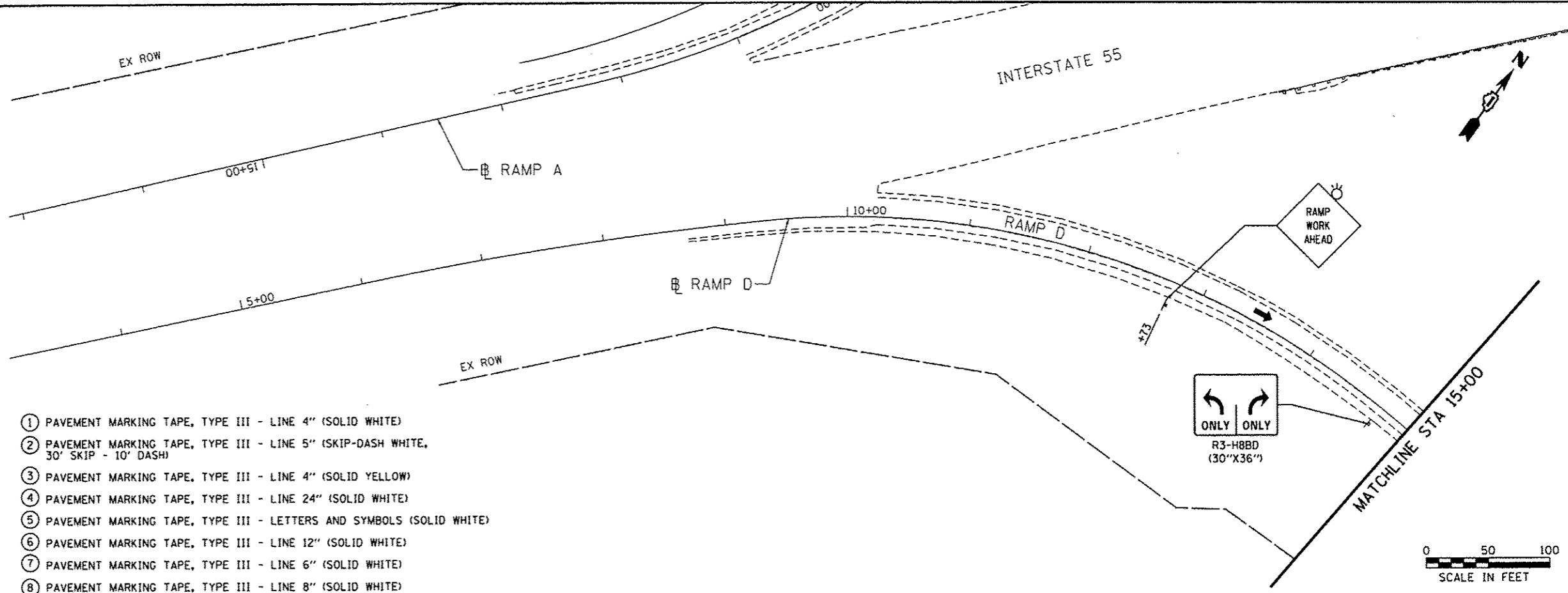
NOTES

1. PRIOR TO INSTALLING POST MOUNTED SIGNS, THE CONTRACTOR SHALL CONTACT J.U.L.I.E.
2. PORTABLE CHANGEABLE MESSAGE TO BE USED AT LOCATIONS AS DETERMINED BY THE ENGINEER.
3. ALL PAVEMENT MARKING USED FOR SUGGESTED STAGES OF CONSTRUCTION ARE TEMPORARY AND PER STANDARD SPECIFICATIONS FOR ROAD AND BRIDGE CONSTRUCTION, SECTION 703.
4. PCC PRECAST SLABS TO BE INSTALLED USING NIGHT TIME LANE CLOSURES.
5. SEE SIGNING PLAN SHEETS FOR SIGN REMOVAL/RELOCATION.
6. CONTRACTOR CANNOT EXCEED DROP OFFS OF 24 INCHES IN SELECT WORK ZONES FOR MORE THAN 48 HOURS.

LEGEND

-  WORK ZONE
-  PAVEMENT REPLACED WITH PCC PRECAST SLABS
-  DIRECTION OF TRAFFIC
-  TEMPORARY PLASTIC DRUMS WITH STEADY BURN MONO-DIRECTIONAL LIGHTS
-  TRAFFIC SIGN
-  TEMP. CONC. BARRIER W/ WALL MARKERS TYPE C @ 25 FT CTRS.

- 1 PAVEMENT MARKING TAPE, TYPE III - LINE 4" (SOLID WHITE)
- 2 PAVEMENT MARKING TAPE, TYPE III - LINE 5" (SKIP-DASH WHITE, 30" SKIP - 10" DASH)
- 3 PAVEMENT MARKING TAPE, TYPE III - LINE 4" (SOLID YELLOW)
- 4 PAVEMENT MARKING TAPE, TYPE III - LINE 24" (SOLID WHITE)
- 5 PAVEMENT MARKING TAPE, TYPE III - LETTERS AND SYMBOLS (SOLID WHITE)
- 6 PAVEMENT MARKING TAPE, TYPE III - LINE 12" (SOLID WHITE)
- 7 PAVEMENT MARKING TAPE, TYPE III - LINE 6" (SOLID WHITE)
- 8 PAVEMENT MARKING TAPE, TYPE III - LINE 8" (SOLID WHITE)



USER NAME = .USER.	DESIGNED - AS/OB	REVISED -
FILE NAME = 0160W13-shr-staging1.dgn	DRAWN - AS/OB	REVISED -
PLOT SCALE = 50.0000' / 1"	CHECKED - IY	REVISED -
PLOT DATE = 12/17/2013	DATE - 12/17/2013	REVISED -

STATE OF ILLINOIS
DEPARTMENT OF TRANSPORTATION

SUGGESTED STAGES OF CONSTRUCTION AND TRAFFIC CONTROL
RAMP D - STAGE 2

SCALE: 1" = 50' SHEET 5 OF 5 SHEETS STA. 5+00 TO STA. 25+00

F.A.P. RTE.	SECTION	COUNTY	TOTAL SHEETS	SHEET NO.
575	14-N	WILL	163	42
CONTRACT NO. 60W13				
ILLINOIS FED. AID PROJECT				