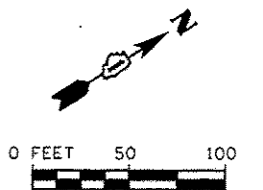
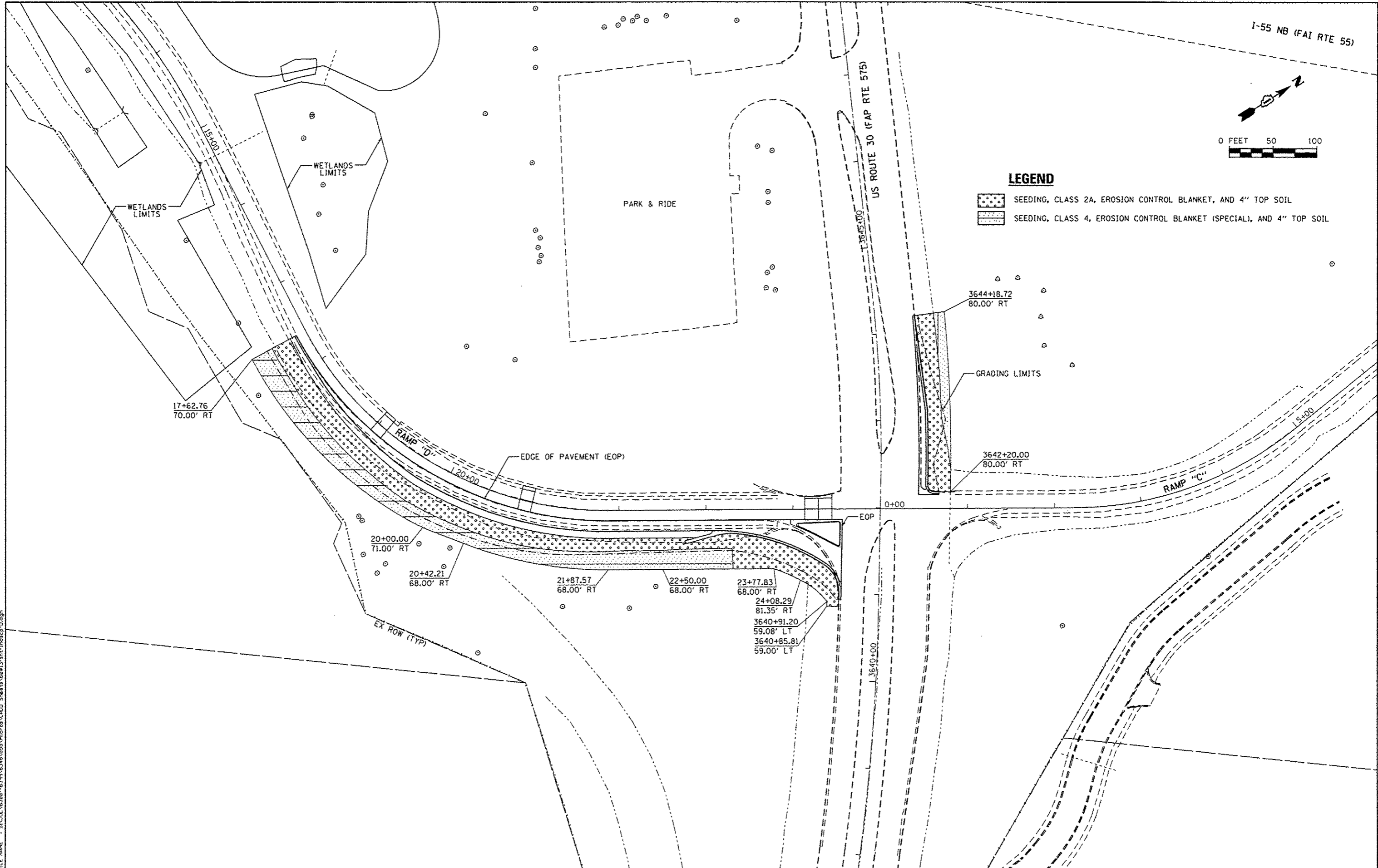


I-55 NB (FAI RTE 55)



**LEGEND**

- SEEDING, CLASS 2A, EROSION CONTROL BLANKET, AND 4" TOP SOIL
- SEEDING, CLASS 4, EROSION CONTROL BLANKET (SPECIAL), AND 4" TOP SOIL



FILE NAME : S:\JULIET\6280-6399\6346\055\Micro\CR00 Sheets\6280.dgn

**SA**  
**STRAND ASSOCIATES**  
 1170 SOUTH HOUBOLT ROAD  
 JOLIET, ILLINOIS 60431  
 (815) 744-4200

|                                     |                 |           |
|-------------------------------------|-----------------|-----------|
| USER NAME = dennis                  | DESIGNED - JLB  | REVISED - |
| MODEL NAME = Default                | DRAWN - DJW     | REVISED - |
| PLOT SCALE = 1/8" = 100.0000' / in. | CHECKED - BMA   | REVISED - |
| PLOT DATE = 12/18/2013              | DATE - 12/17/13 | REVISED - |

**STATE OF ILLINOIS  
 DEPARTMENT OF TRANSPORTATION**

**LANDSCAPING PLAN  
 RAMP "D"**

SCALE:      SHEET      OF      SHEETS      STA.      TO      STA.

|                           |              |             |                  |              |
|---------------------------|--------------|-------------|------------------|--------------|
| F.A.P. RTE. 575           | SECTION 14-N | COUNTY WILL | TOTAL SHEETS 163 | SHEET NO. 60 |
| CONTRACT NO. 60W13        |              |             |                  |              |
| ILLINOIS FED. AID PROJECT |              |             |                  |              |