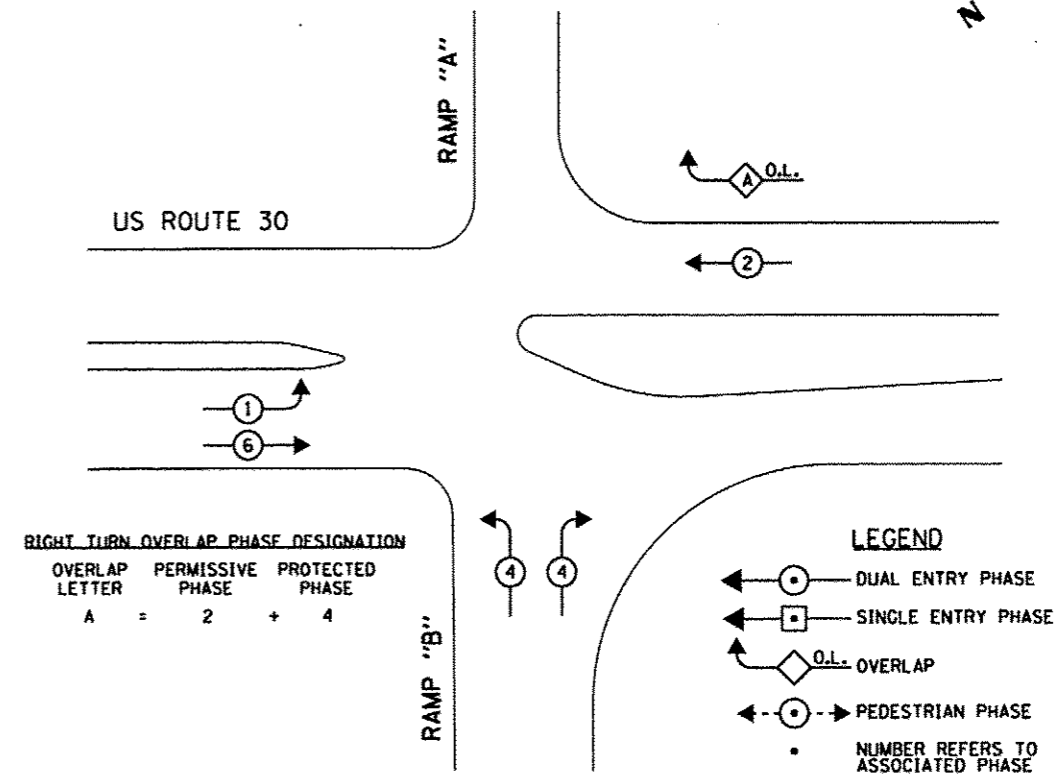


SCHEDULE OF QUANTITIES

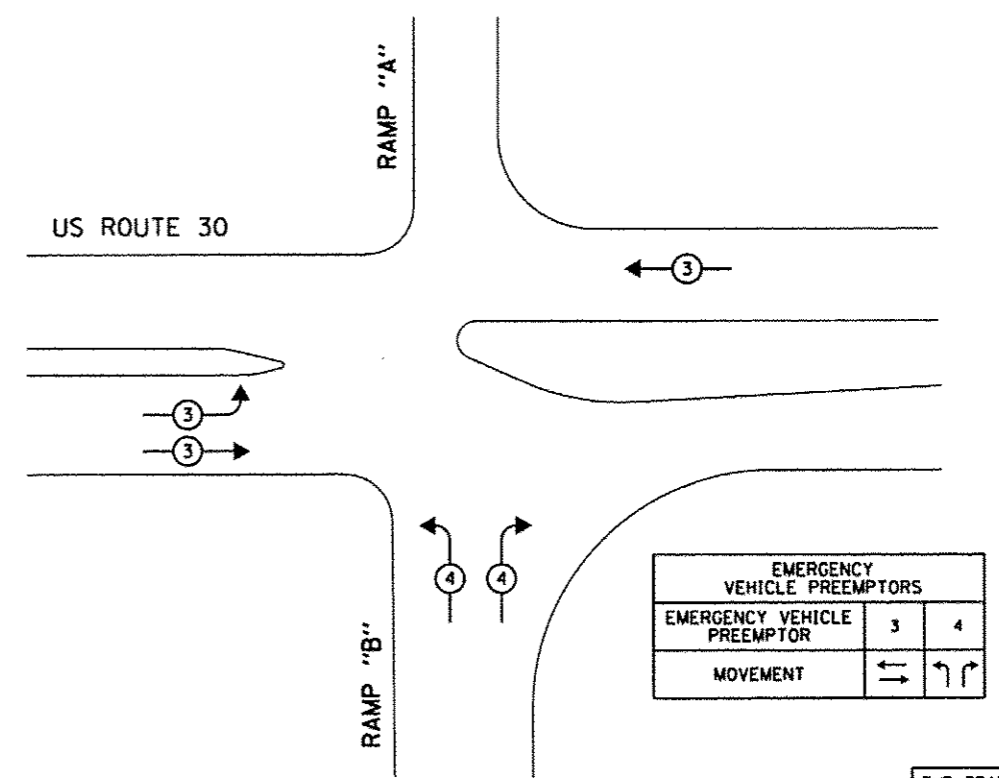
QUANTITY	UNIT	ITEM
7.5	SO FT	SIGN PANEL - TYPE 1
1	EACH	SERVICE INSTALLATION - POLE MOUNTED
1005	FOOT	UNDERGROUND CONDUIT, GALVANIZED STEEL, 2" DIA.
107	FOOT	UNDERGROUND CONDUIT, GALVANIZED STEEL, 2½" DIA.
120	FOOT	UNDERGROUND CONDUIT, GALVANIZED STEEL, 3" DIA.
519	FOOT	UNDERGROUND CONDUIT, GALVANIZED STEEL, 4" DIA.
6	EACH	HANDHOLE
2	EACH	HEAVY-DUTY HANDHOLE
2	EACH	DOUBLE HANDHOLE
1	EACH	TRANSCEIVER-FIBER OPTIC
• 678	FOOT	ELECTRIC CABLE IN CONDUIT, SIGNAL NO. 14 3C
2310	FOOT	ELECTRIC CABLE IN CONDUIT, SIGNAL NO. 14 5C
1074	FOOT	ELECTRIC CABLE IN CONDUIT, SIGNAL NO. 14 7C
3772	FOOT	ELECTRIC CABLE IN CONDUIT, LEAD-IN, NO. 14 1 PAIR
58	FOOT	ELECTRIC CABLE IN CONDUIT, SERVICE, NO. 6 2C
842	FOOT	ELECTRIC CABLE IN CONDUIT, EQUIPMENT GROUNDING CONDUCTOR, NO. 6 1C
4	EACH	TRAFFIC SIGNAL POST, GALVANIZED STEEL 14 FT.
1	EACH	STEEL MAST ARM ASSEMBLY AND POLE 24 FT.
1	EACH	STEEL MAST ARM ASSEMBLY AND POLE 32 FT.
1	EACH	STEEL MAST ARM ASSEMBLY AND POLE 44 FT.
1	EACH	STEEL MAST ARM ASSEMBLY AND POLE WITH DUAL MAST ARMS, 24 FT. AND 36 FT.
16	FOOT	CONCRETE FOUNDATION, TYPE A
4	FOOT	CONCRETE FOUNDATION, TYPE C
10	FOOT	CONCRETE FOUNDATION, TYPE E 30-INCH DIAMETER
36	FOOT	CONCRETE FOUNDATION, TYPE E 36-INCH DIAMETER
7	EACH	SIGNAL HEAD, LED, 1-FACE, 3-SECTION, MAST ARM MOUNTED
4	EACH	SIGNAL HEAD, LED, 1-FACE, 3-SECTION, BRACKET MOUNTED
4	EACH	SIGNAL HEAD, LED, 1-FACE, 5-SECTION, MAST ARM MOUNTED
11	EACH	TRAFFIC SIGNAL BACKPLATE, LOUVERED, ALUMINUM
13	EACH	INDUCTIVE LOOP DETECTOR
826	FOOT	DETECTOR LOOP, TYPE I
145	FOOT	PREFORMED DETECTOR LOOP
• 3	EACH	LIGHT DETECTOR
• 1	EACH	LIGHT DETECTOR AMPLIFIER
1	EACH	TEMPORARY TRAFFIC SIGNAL INSTALLATION
1	EACH	REMOVE EXISTING TRAFFIC SIGNAL EQUIPMENT
8	EACH	REMOVE EXISTING HANDHOLE
1	EACH	REMOVE EXISTING DOUBLE HANDHOLE
7	EACH	REMOVE EXISTING CONCRETE FOUNDATION
• 678	FOOT	EMERGENCY VEHICLE PRIORITY SYSTEM LINE SENSOR CABLE, NO. 20 3/C
1	EACH	FULL-ACTUATED CONTROLLER AND TYPE IV CABINET, SPECIAL
1	EACH	UNINTERRUPTABLE POWER SUPPLY, SPECIAL
1	EACH	TEMPORARY TRAFFIC SIGNAL TIMING

• 100% COST TO CITY OF JOLIET

CONTROLLER SEQUENCE



PHASE DESIGNATION DIAGRAM



THE TRAFFIC SIGNAL CONTROL EQUIPMENT FOR THIS PROJECT SHALL BE "ECONOLITE" TO MATCH THE EXISTING ADJACENT SYSTEM.



USER NAME = USER	DESIGNED - MG	REVISED -
FILE NAME = D:\66113-shr-tsl18.dgn	DRAWN - VP/MG	REVISED -
PLOT SCALE = 20.0000 1/1 in.	CHECKED - JY/KP	REVISED -
PLOT DATE = 12/17/2013	DATE - 12/17/2013	REVISED -

STATE OF ILLINOIS
DEPARTMENT OF TRANSPORTATION

PHASE DESIGNATION DIAGRAM,
EMERGENCY VEHICLE PREEMPTION SEQUENCE OF OPERATIONS,
SCHEDULE OF QUANTITIES, US ROUTE 30 AT I-55 RAMPS A AND B
SCALE: NTS SHEET 24 OF 33 SHEETS STA. TO STA.

F.A.P. RTE.	SECTION	COUNTY	TOTAL SHEETS	SHEET NO.
575	14-N	WILL	163	84
			CONTRACT NO. 60W13	
ILLINOIS FED. AID PROJECT				