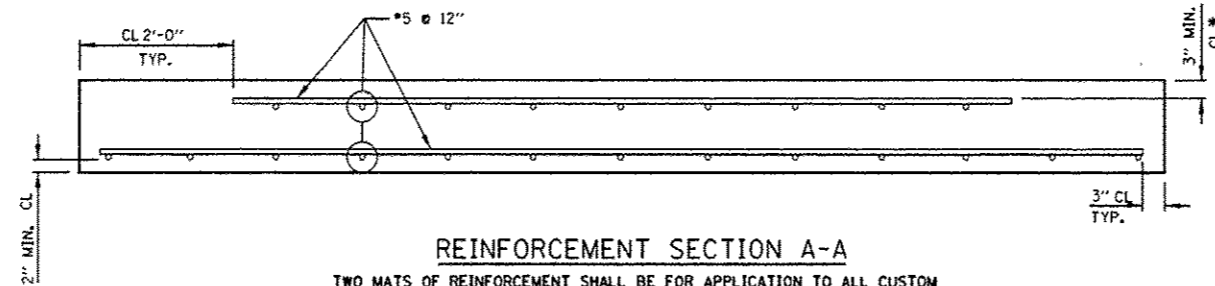
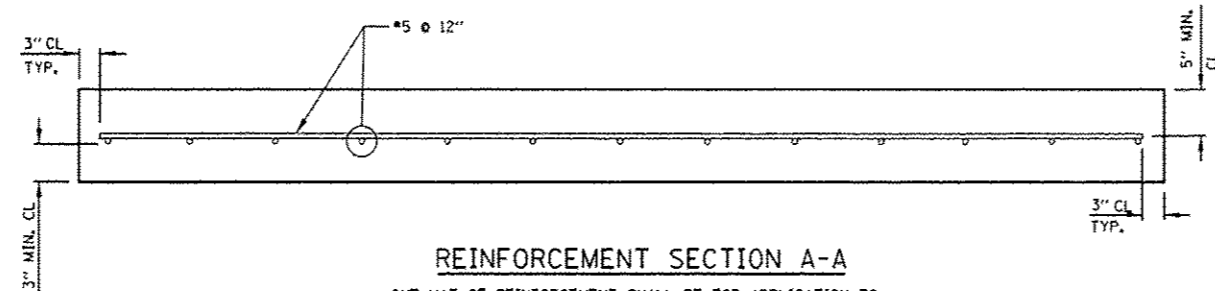


TYPICAL REINFORCEMENT DETAIL FOR CUSTOM SLABS



REINFORCEMENT SECTION A-A

TWO MATS OF REINFORCEMENT SHALL BE FOR APPLICATION TO ALL CUSTOM SLABS GREATER THAN 6 FT. LONGITUDINAL LENGTH TO BE OPENED TO TRAFFIC BEFORE GROUTING IS COMPLETED
ALL BARS ARE TRIM TO FIT #5 BAR



REINFORCEMENT SECTION A-A

ONE MAT OF REINFORCEMENT SHALL BE FOR APPLICATION TO ALL STANDARD SLABS AND FOR ANY CUSTOM SLABS GREATER THAN 6 FT. LONGITUDINAL LENGTH TO BE OPENED TO TRAFFIC ONLY AFTER GROUTING IS COMPLETED.
ALL BARS ARE TRIM TO FIT #5 BAR

NOTE:

FOR ALL CUSTOM SLABS OF TRAPEZOID SHAPES, REINFORCEMENT SHALL BE LAID OUT IN A PERPENDICULAR GRID PATTERN, NOT SKEWED.

FILE NAME =	USER NAME = PancePL	DESIGNED - O. PATEL	REVISED -	STATE OF ILLINOIS DEPARTMENT OF TRANSPORTATION	PRECAST CONCRETE PAVEMENT SLABS			F.A.P. RTE.	SECTION	COUNTY	TOTAL SHEETS	SHEET NO.
sl\p\plan\prep\aquod-2\dos-pp\68-55-11	faigenquin rd diamond grinding\pac_patch	DRAWN: precast PCC Patching.dgn	REVISED -					575	14-N	WILL	163	112
PLOT SCALE = 100,0000 - / in.	CHECKED -	REVISED -	REVISED -		BD 57			CONTRACT NO. 60W13				
PLOT DATE = 12/16/2013	DATE - 10-25-2013	REVISED -	REVISED -		SCALE: NONE	SHEET NO. 3 OF 19 SHEETS	STA.	TO STA.	FED. ROAD DIST. NO. 1 ILLINOIS FED. AID PROJECT			