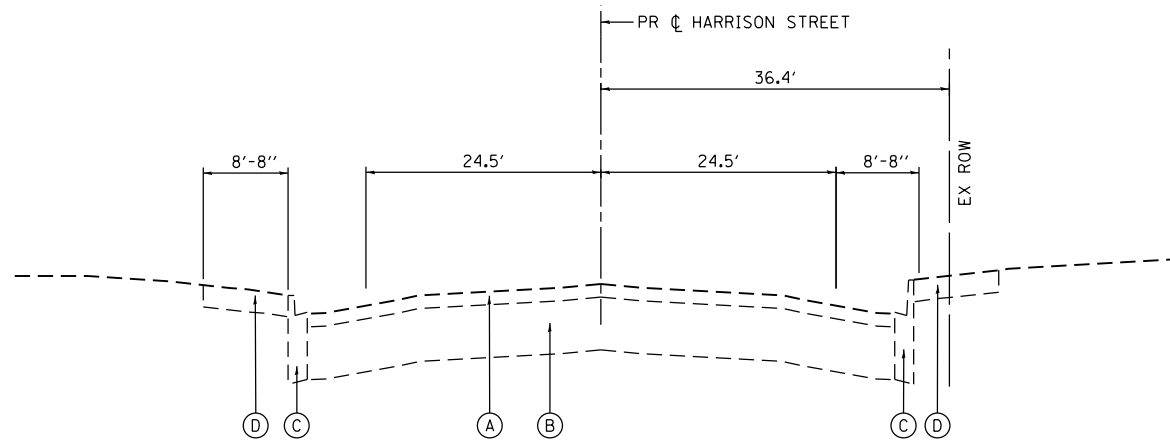
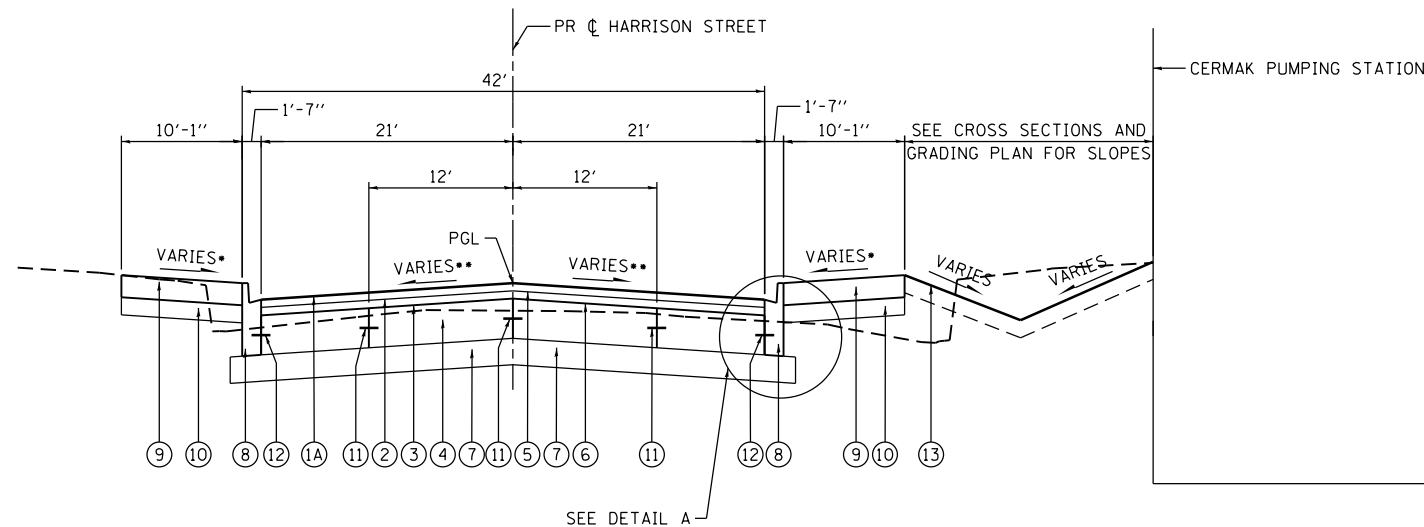


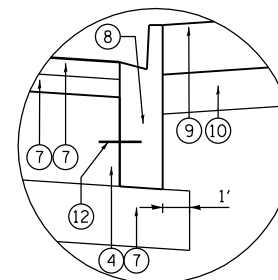
FILE PATH = p:\388035\pmt\esc\com\me\local\p\AEC\000\Documents\01\_Americas\Transportation\6269938\_Circle\Phase\_1\000\_CAD\005\_Roadway\_Sheets\60W71\_sht-Typical-01



**1** **EXISTING TYPICAL SECTION**  
**HARRISON STREET**  
 STA 7811+18.00 TO STA 7814+50.00



**2** **PROPOSED TYPICAL SECTION**  
**HARRISON STREET**  
 STA 7811+18.00 TO STA 7811+44.50  
 STA 7813+79.75 TO STA 7814+10.00  
 • SEE NOTE 1  
 •• SEE NOTE 2  
 BRIDGE APPROACH PAVEMENT CONNECTOR (FLEXIBLE)  
 STA 7811+18.00 TO STA 7811+24.00  
 STA 7811+38.50 TO STA 7811+44.50  
 STA 7813+73.75 TO STA 7813+79.75



**DETAIL A**

**EXISTING**

- (A) HOT-MIX ASPHALT PAVEMENT, 2 3/4" - 5"
- (B) PORTLAND CEMENT CONCRETE PAVEMENT, 11" - 1 1/4"
- (C) B-V.12 CONCRETE CURB AND GUTTER
- (D) P.C. CONCRETE SIDEWALK

**PROPOSED**

- (1A) HOT-MIX ASPHALT SURFACE COURSE, MIX "D", N70, 1 3/4"
- (1B) HOT-MIX ASPHALT SURFACE COURSE, MIX "D", N70, 1 1/2"
- (2) HOT-MIX ASPHALT BINDER COURSE, IL-19.0, N70, 2 1/4"
- (3) PAVEMENT FABRIC
- (4) PORTLAND CEMENT CONCRETE BASE COURSE, 9"
- (5) BITUMINOUS MATERIALS (PRIME COAT)
- (6) AGGREGATE (PRIME COAT)
- (7) SUB-BASE GRANULAR MATERIAL, TYPE B, 6"
- (8) COMBINATION CURB AND GUTTER TYPE B V.12 (CDOT)
- (9) PORTLAND CEMENT CONCRETE SIDEWALK 5 INCH
- (10) SUBBASE GRANULAR MATERIAL, TYPE B 4"
- (11) #5 TIE BARS, 30" LONG AT 30" C-C (LONGITUDINAL CONSTRUCTION JOINT) (INCLUDED IN PRICE FOR BID FOR PCC BASE COURSE)
- (12) #5 TIE BARS, 30" LONG AT 30" C-C (INCLUDED IN PRICE FOR BID FOR CURB AND GUTTER)
- (13) TOPSOIL FURNISH AND PLACE, 4"
- (14) LEVELING BINDER (MACHINE METHOD), N70, 3/4"
- (15) #5 TIE BARS, 18" LONG AT 30" C-C (INCLUDED IN PRICE FOR BID FOR PCC BASE COURSE)
- (16) CLASS D PATCHES, TYPE IV, 12 INCH
- (17) PAVEMENT MARKINGS (SEE PAVEMENT MARKING PLAN)

**NOTES:**

1. AS INDICATED ON THE ROADWAY PLANS, TYPICALLY AT LEAST 6' OF PROPOSED SIDEWALK WIDTH MUST HAVE A CROSS SLOPE OF 1:64 OR LESS.
2. TYPICAL LOCAL ROADWAY CROSS SLOPE VARIES BETWEEN 1.4% AND 3.6% AS INDICATED ON THE PLANS. SEE ROADWAY AND GRADING PLAN DETAILS FOR ROADWAY SLOPE TRANSITIONS.
3. PCC BASE COURSE SHALL HAVE TRANSVERSE CONTRACTION JOINTS AT A 20' MAXIMUM SPACING. (INCLUDED IN PRICE FOR BID FOR PCC BASE COURSE)

**HOT MIX ASPHALT MIXTURE REQUIREMENTS**

MIXTURE TYPE	AIR VOIDS (%) @ND5
<b>PAVEMENT RESURFACING</b>	
HOT-MIX ASPHALT SURFACE COURSE, MIX "D", N70 (IL-9.5 mm): 1-1/2" AND 1-3/4"	4% @ 70 GYR
HOT-MIX ASPHALT BINDER COURSE, IL-19.0, N70: 2-1/4"	4% @ 70 GYR
LEVELING BINDER (MACHINE METHOD), N70: 3/4"	4% @ 70 GYR

1. THE UNIT WEIGHT USED TO CALCULATE ALL HMA SURFACE MIXTURE QUANTITIES IS 112 LBS/SO YD/IN.
2. THE AC TYPE FOR POLYMERIZED HMA MIXTURES SHALL BE "SBS/SBR PG 76-22" AND FOR NON-POLYMERIZED HMA THE "AC TYPE" SHALL BE "PG 64-22" UNLESS MODIFIED BY DISTRICT ONE SPECIAL PROVISIONS. FOR USE OF RECYCLED MATERIALS SEE DISTRICT ONE SPECIAL PROVISIONS.



D160W71-sht-Typical-01  
 USER NAME = chiuw  
 PLOT SCALE = 20.0000' / in.  
 PLOT DATE = 2/18/2014

DESIGNED - OPS  
 DRAWN - OPS  
 CHECKED - DBM  
 DATE - 02/19/14  
 REVISED -  
 REVISED -  
 REVISED -  
 REVISED -

**STATE OF ILLINOIS**  
**DEPARTMENT OF TRANSPORTATION**

**TYPICAL SECTIONS**  
**HARRISON STREET**

SCALE: NONE    SHEET 1 OF 1 SHEETS    STA.    TO STA.

F.A.I. RTE.	SECTION	COUNTY	TOTAL SHEETS	SHEET NO.
90/94/290	2013-036R	COOK	256	20
CONTRACT NO. 60W71				
ILLINOIS FED. AID PROJECT				