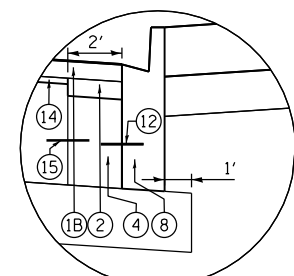


**3 PROPOSED TYPICAL SECTION
HARRISON STREET RESURFACING**

STA 7814+10.00 TO STA 7814+50.00
 * SEE NOTE 1
 ** SEE NOTE 2
 DRIVEWAY LT (CTA BUS TURN OUT) - CL STA 7814+06.85



DETAIL B

EXISTING

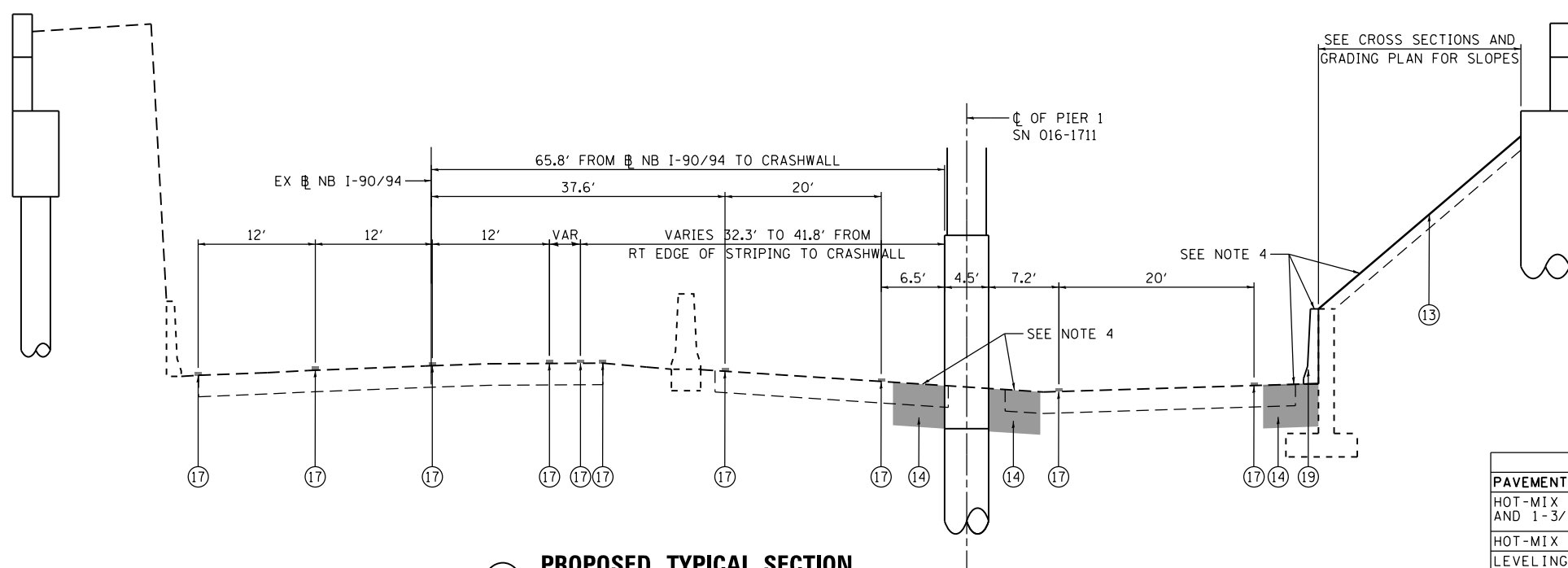
- (A) HOT-MIX ASPHALT PAVEMENT, 2 3/4" - 5"
- (B) PORTLAND CEMENT CONCRETE PAVEMENT, 11" - 1 1/4"
- (C) B-V.12 CONCRETE CURB AND GUTTER
- (D) P.C. CONCRETE SIDEWALK

PROPOSED

- (1A) HOT-MIX ASPHALT SURFACE COURSE, MIX "D", N70, 1 3/4"
- (1B) HOT-MIX ASPHALT SURFACE COURSE, MIX "D", N70, 1 1/2"
- (2) HOT-MIX ASPHALT BINDER COURSE, IL-19.0, N70, 2 1/4"
- (3) PAVEMENT FABRIC
- (4) PORTLAND CEMENT CONCRETE BASE COURSE, 9"
- (5) BITUMINOUS MATERIALS (PRIME COAT)
- (6) AGGREGATE (PRIME COAT)
- (7) SUB-BASE GRANULAR MATERIAL, TYPE B, 6"
- (8) COMBINATION CURB AND GUTTER TYPE B V.12 (CDOT)
- (9) PORTLAND CEMENT CONCRETE SIDEWALK 5 INCH
- (10) SUBBASE GRANULAR MATERIAL, TYPE B 4"
- (11) *5 TIE BARS, 30" LONG AT 30" C-C (LONGITUDINAL CONSTRUCTION JOINT) (INCLUDED IN PRICE FOR BID FOR PCC BASE COURSE)
- (12) *5 TIE BARS, 30" LONG AT 30" C-C (INCLUDED IN PRICE FOR BID FOR CURB AND GUTTER)
- (13) TOPSOIL FURNISH AND PLACE, 4"
- (14) LEVELING BINDER (MACHINE METHOD), N70, 3/4"
- (15) *5 TIE BARS, 18" LONG AT 30" C-C (INCLUDED IN PRICE FOR BID FOR PCC BASE COURSE)
- (16) CLASS D PATCHES, TYPE IV, 12 INCH
- (17) PAVEMENT MARKINGS (SEE PAVEMENT MARKING PLAN)
- (18) TEMPORARY CHAIN LINK FENCE
- (19) TEMPORARY CONCRETE BARRIER (TO REMAIN PERMANENTLY)

NOTES:

1. AS INDICATED ON THE ROADWAY PLANS, TYPICALLY AT LEAST 6' OF PROPOSED SIDEWALK WIDTH MUST HAVE A CROSS SLOPE OF 1:64 OR LESS.
2. TYPICAL LOCAL ROADWAY CROSS SLOPE VARIES BETWEEN 1.4% AND 3.6% AS INDICATED ON THE PLANS. SEE ROADWAY AND GRADING PLAN DETAILS FOR ROADWAY SLOPE TRANSITIONS.
3. PCC BASE COURSE SHALL HAVE TRANSVERSE CONTRACTION JOINTS AT A 20' MAXIMUM SPACING. (INCLUDED IN PRICE FOR BID FOR PCC BASE COURSE).
4. PRIOR TO COMMENCING THE WORK THE CONTRACTOR SHALL COORDINATE WITH WORK UNDER CONTRACT 60W28. THE ACTUAL NEED OF THIS WORK SHALL BE DETERMINED IN THE FIELD AT THE TIME OF CONSTRUCTION BY THE ENGINEER. UPON COORDINATION ANY WORK NOT REQUIRED SHALL BE DELETED FROM THIS CONTRACT. COOPERATION BETWEEN CONTRACTORS WILL BE REQUIRED.



**4 PROPOSED TYPICAL SECTION
NB I-90/94**

LOOKING NORTH

HOT MIX ASPHALT MIXTURE REQUIREMENTS

PAVEMENT RESURFACING	MIXTURE TYPE	AIR VOIDS (%) @ND5
HOT-MIX ASPHALT SURFACE COURSE, MIX "D", N70 (IL-9.5 mm): 1-1/2" AND 1-3/4"		4% @ 70 GYR
HOT-MIX ASPHALT BINDER COURSE, IL-19.0, N70: 2-1/4"		4% @ 70 GYR
LEVELING BINDER (MACHINE METHOD), N70: 3/4"		4% @ 70 GYR

1. THE UNIT WEIGHT USED TO CALCULATE ALL HMA SURFACE MIXTURE QUANTITIES IS 112 LBS/SO YD/IN.
2. THE AC TYPE FOR POLYMERIZED HMA MIXTURES SHALL BE "SBS/SBR PG 76-22" AND FOR NON-POLYMERIZED HMA THE "AC TYPE" SHALL BE "PG 64-22" UNLESS MODIFIED BY DISTRICT ONE SPECIAL PROVISIONS. FOR USE OF RECYCLED MATERIALS SEE DISTRICT ONE SPECIAL PROVISIONS.

FILE PATH = p:\388035\pmt\escomon\me\local\p\AECD\000\Documents\01_Americas\Transportation\6269938_Circle\Phase_1\000_CAD\005_Roadway\Sheets\60W71-sht-Typical-02.dgn



D160W71-sht-Typical-02.dgn
 USER NAME = pimsarno
 PLOT SCALE = 20.0000' / in.
 PLOT DATE = 2/20/2014

DESIGNED - OPS
 DRAWN - OPS
 CHECKED - DBM
 DATE - 02/19/14

REVISED -
 REVISED -
 REVISED -
 REVISED -

**STATE OF ILLINOIS
DEPARTMENT OF TRANSPORTATION**

**TYPICAL SECTIONS
HARRISON STREET AND NB I-90/94**

SCALE: NONE SHEET 1 OF 1 SHEETS STA. TO STA.

F.A.I. RTE.	SECTION	COUNTY	TOTAL SHEETS	SHEET NO.
90/94/290	2013-036R	COOK	256	20A
CONTRACT NO. 60W71				
ILLINOIS FED. AID PROJECT				