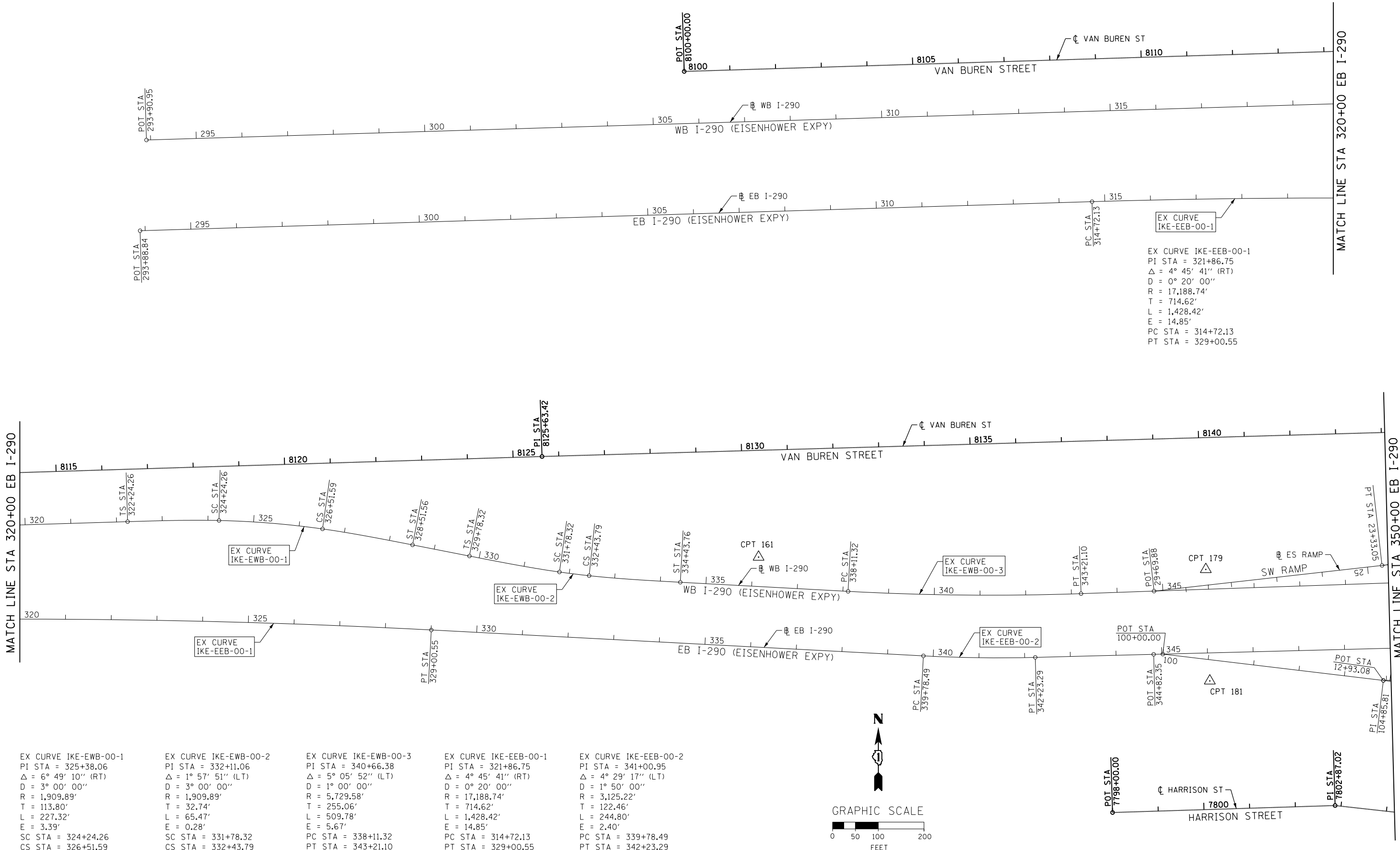
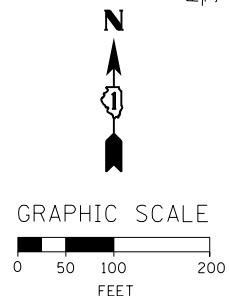


FILE PATH = p:\388035\pmt\1\escom\line\local\IPEEDM00\Documents\01_Americas\Transportation\62629938_Circle\Phase_1\000_CAD\005_Roadway_Sheets\60W71_Contract\0160W71-Sht-ATB-04.dgn



EX CURVE IKE-EEB-00-1
 PI STA = 321+86.75
 $\Delta = 4^\circ 45' 41''$ (RT)
 $D = 0^\circ 20' 00''$
 $R = 17,188.74'$
 $T = 714.62'$
 $L = 1,428.42'$
 $E = 14.85'$
 PC STA = 314+72.13
 PT STA = 329+00.55

EX CURVE IKE-EWB-00-1 PI STA = 325+38.06 $\Delta = 6^\circ 49' 10''$ (RT) $D = 3^\circ 00' 00''$ $R = 1,909.89'$ $T = 113.80'$ $L = 227.32'$ $E = 3.39'$ SC STA = 324+24.26 CS STA = 326+51.59	EX CURVE IKE-EWB-00-2 PI STA = 332+11.06 $\Delta = 1^\circ 57' 51''$ (LT) $D = 3^\circ 00' 00''$ $R = 1,909.89'$ $T = 32.74'$ $L = 65.47'$ $E = 0.28'$ SC STA = 331+78.32 CS STA = 332+43.79	EX CURVE IKE-EWB-00-3 PI STA = 340+66.38 $\Delta = 5^\circ 05' 52''$ (LT) $D = 1^\circ 00' 00''$ $R = 5,729.58'$ $T = 255.06'$ $L = 509.78'$ $E = 5.67'$ PC STA = 338+11.32 PT STA = 343+21.10	EX CURVE IKE-EEB-00-1 PI STA = 321+86.75 $\Delta = 4^\circ 45' 41''$ (RT) $D = 0^\circ 20' 00''$ $R = 17,188.74'$ $T = 714.62'$ $L = 1,428.42'$ $E = 14.85'$ PC STA = 314+72.13 PT STA = 329+00.55	EX CURVE IKE-EEB-00-2 PI STA = 341+00.95 $\Delta = 4^\circ 29' 17''$ (LT) $D = 1^\circ 50' 00''$ $R = 3,125.22'$ $T = 122.46'$ $L = 244.80'$ $E = 2.40'$ PC STA = 339+78.49 PT STA = 342+23.29
---	---	---	---	---



D160W71-Sht-ATB-04.dgn
 USER NAME = pimsarno
 PLOT SCALE = 100.0000' / 1" / 100'
 PLOT DATE = 12/19/2013

DESIGNED - OPS	REVISED -
DRAWN - PHP	REVISED -
CHECKED - DBM	REVISED -
DATE - 12/20/13	REVISED -

STATE OF ILLINOIS
 DEPARTMENT OF TRANSPORTATION

ALIGNMENT, TIES AND BENCHMARKS	
SCALE: 1" = 100'	SHEET 4 OF 5 SHEETS
STA.	TO STA.

F.A.I. R.E.	SECTION	COUNTY	TOTAL SHEETS	SHEET NO.
90/94/290	2013-036R	COOK	256	30
CONTRACT NO. 60W71				
ILLINOIS FED. AID PROJECT				