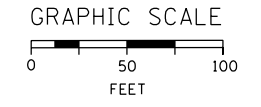
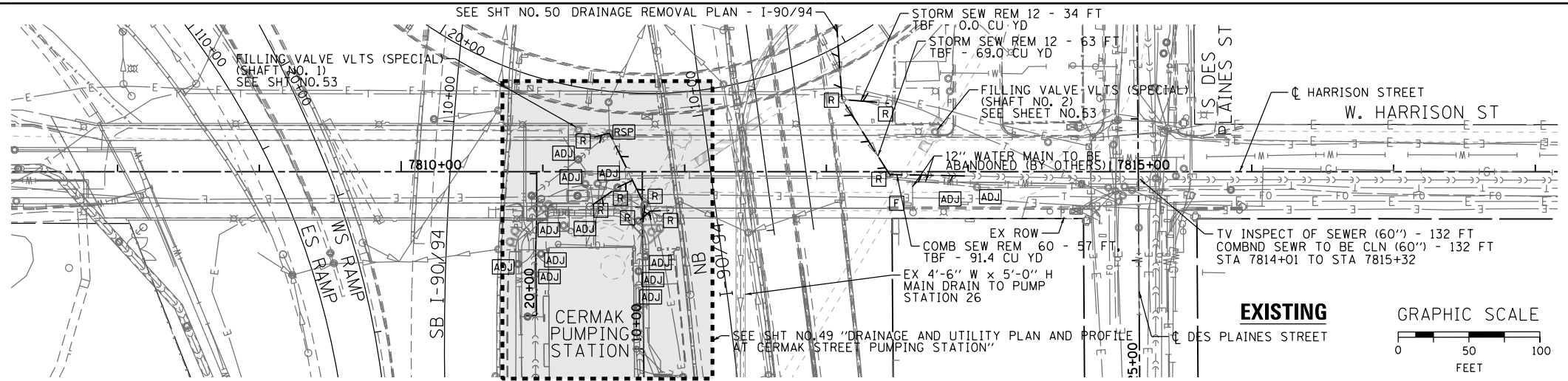
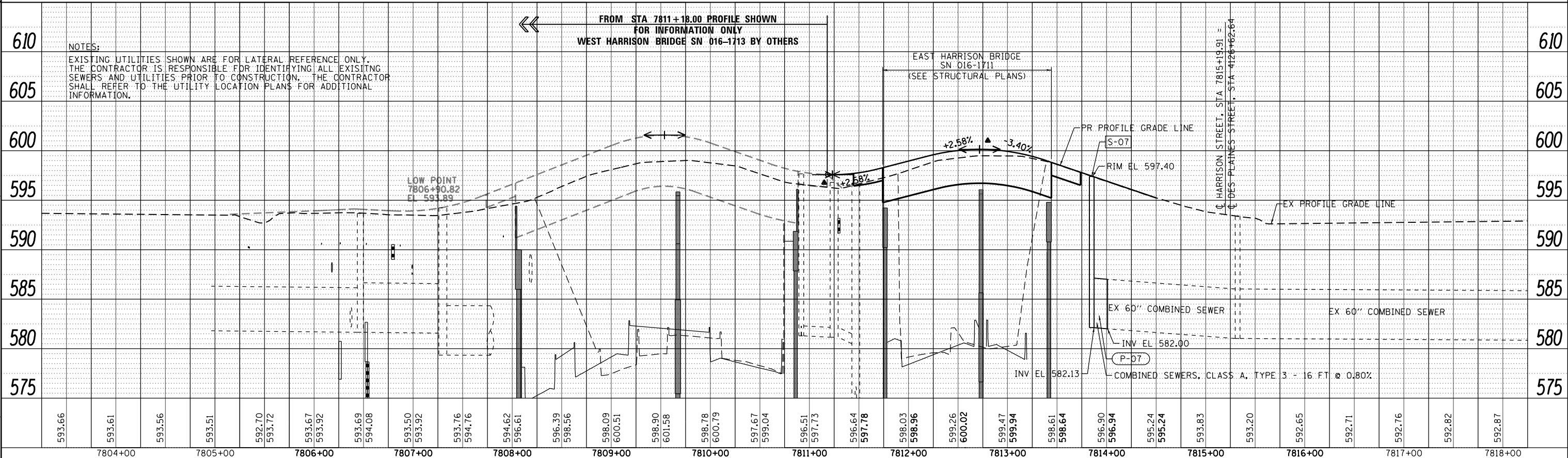
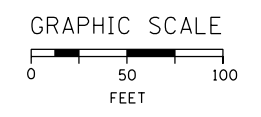
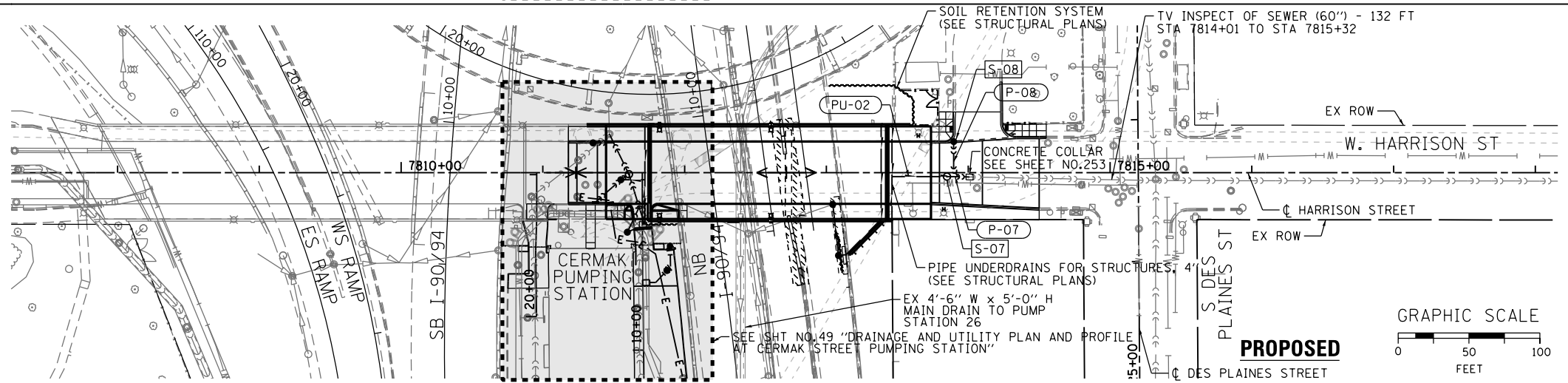


LEGEND

- ADJ TO BE ADJUSTED
- RSP TO BE RECONSTRUCTED (SPECIAL)
- R TO BE REMOVED
- F TO BE FILLED



- NOTES:**
- SEE LIGHTING AND ITS PLANS FOR REMOVAL AND CONSTRUCTION OF STRUCTURES, DUCTBANKS AND CONDUITS.



PLAN	SUBMITTED	DATE
	PLOTTED	
	ALIGNMENT CHECKED	
	NOTE BOOK	
	NO.	
	FILE NAME	

PROFILE	SUBMITTED	DATE
	PLOTTED	
	GRADES CHECKED	
	STRUCTURE	
	NOTATIONS CHKD	
	NO.	

FILE PATH = p:\388035-p\m\local\p\AEC\000\Documents\01\Americas\Transportation\62629938 - Circle Phase I\000_CAD\005_Roadway\Sheets\60W71-Drain-Drain-01



D160W71-sht-Drain-01
 USER NAME = chiwa
 PLOT SCALE = 100.0000' / in.
 PLOT DATE = 2/19/2014

DESIGNED - AFC/MSC
 DRAWN - AFC/MSC
 CHECKED - EEY/DBM
 DATE - 02/19/14

REVISED -
 REVISED -
 REVISED -
 REVISED -

STATE OF ILLINOIS
 DEPARTMENT OF TRANSPORTATION

DRAINAGE AND UTILITY PLAN AND PROFILE
 HARRISON STREET

SCALE: 1"=50' SHEET 1 OF 1 SHEETS STA. TO STA.

F.A.I. RTE.	SECTION	COUNTY	TOTAL SHEETS	SHEET NO.
90/94/290	2013-036R	COOK	256	48
CONTRACT NO. 60W71				
ILLINOIS FED. AID PROJECT				