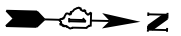
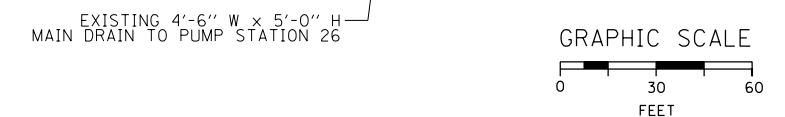
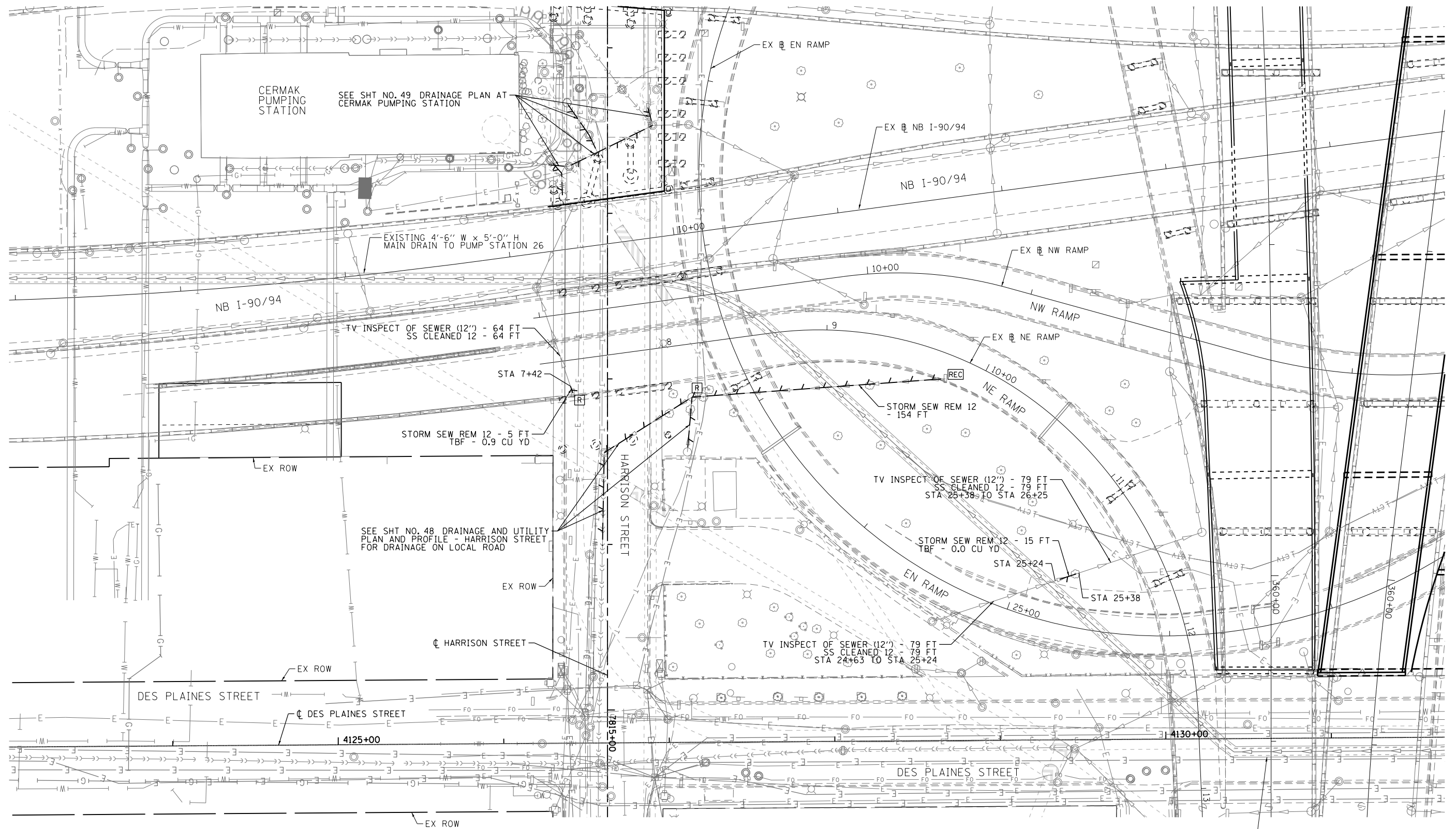


**LEGEND**

- [ADJ] TO BE ADJUSTED
- [REC] TO BE RECONSTRUCTED
- [R] TO BE REMOVED



**EXISTING**



FILE PATH = p:\388035\pmt\aeconom\line\local\p\AECDM00\Documents\01\_Americas\Transportation\6269938\_Circle\Phase\_1\000\_CAD\005\_Roadway\_Sheets\60W71-Contract\0160W71-sht-Drain-03



|                            |                 |           |
|----------------------------|-----------------|-----------|
| D160W71-sht-Drain-03       | DESIGNED - AFC  | REVISED - |
| USER NAME = chtua          | DRAWN - AFC     | REVISED - |
| PLOT SCALE = 30.0000' / 1" | CHECKED - E E Y | REVISED - |
| PLOT DATE = 12/19/2013     | DATE - 12/20/13 | REVISED - |

**STATE OF ILLINOIS  
DEPARTMENT OF TRANSPORTATION**

|                              |                     |
|------------------------------|---------------------|
| <b>DRAINAGE REMOVAL PLAN</b> |                     |
| <b>I-90/94</b>               |                     |
| SCALE: 1"=30'                | SHEET 1 OF 1 SHEETS |
| STA.                         | TO STA.             |

|                           |           |        |              |           |
|---------------------------|-----------|--------|--------------|-----------|
| F.A.I. RTE.               | SECTION   | COUNTY | TOTAL SHEETS | SHEET NO. |
| 90/94/290                 | 2013-036R | COOK   | 256          | 50        |
| CONTRACT NO. 60W71        |           |        |              |           |
| ILLINOIS FED. AID PROJECT |           |        |              |           |