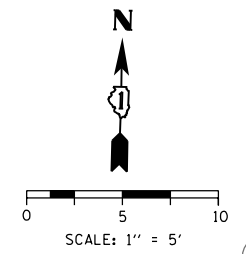
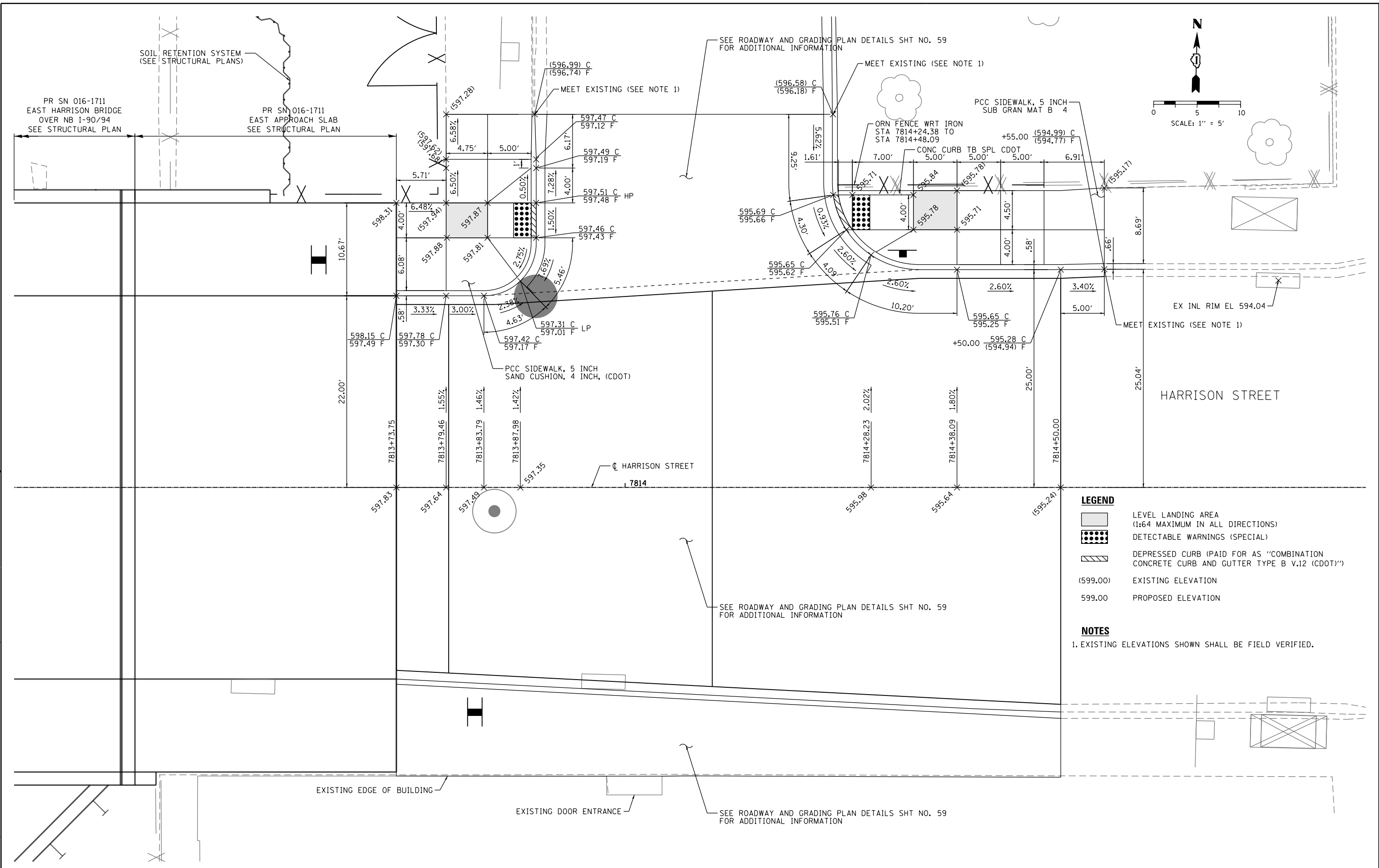


FILE PATH = p:\388035-p\m\1\escomon\me\local\p\AEC\000\Documents\01_Americas\Transportation\6269938_Circle\Phase_1\000_CAD\005_Roadway\Sheets\60W71_Contract\0160W71-sht-Intersec-Detail-02



- LEGEND**
- LEVEL LANDING AREA (1:64 MAXIMUM IN ALL DIRECTIONS)
 - DETECTABLE WARNINGS (SPECIAL)
 - DEPRESSED CURB (PAID FOR AS "COMBINATION CONCRETE CURB AND GUTTER TYPE B V.12 (CDOT)")
 - (599.00) EXISTING ELEVATION
 - 599.00 PROPOSED ELEVATION

- NOTES**
1. EXISTING ELEVATIONS SHOWN SHALL BE FIELD VERIFIED.



D160W71-sht-Intersec-Detail-02
 USER NAME = pimsarno
 PLOT SCALE = 10.0000" / in.
 PLOT DATE = 2/19/2014

DESIGNED - AFC	REVISED -
DRAWN - AFC	REVISED -
CHECKED - DBM	REVISED -
DATE - 02/19/14	REVISED -

STATE OF ILLINOIS
 DEPARTMENT OF TRANSPORTATION

CURB RAMP DETAILS
 CTA BUS TURNOUT

SCALE: 1" = 5' SHEET 2 OF 2 SHEETS STA. TO STA.

F.A.I. RTE.	SECTION	COUNTY	TOTAL SHEETS	SHEET NO.
90/94/290	2013-036R	COOK	256	61
CONTRACT NO. 60W71				
ILLINOIS FED. AID PROJECT				