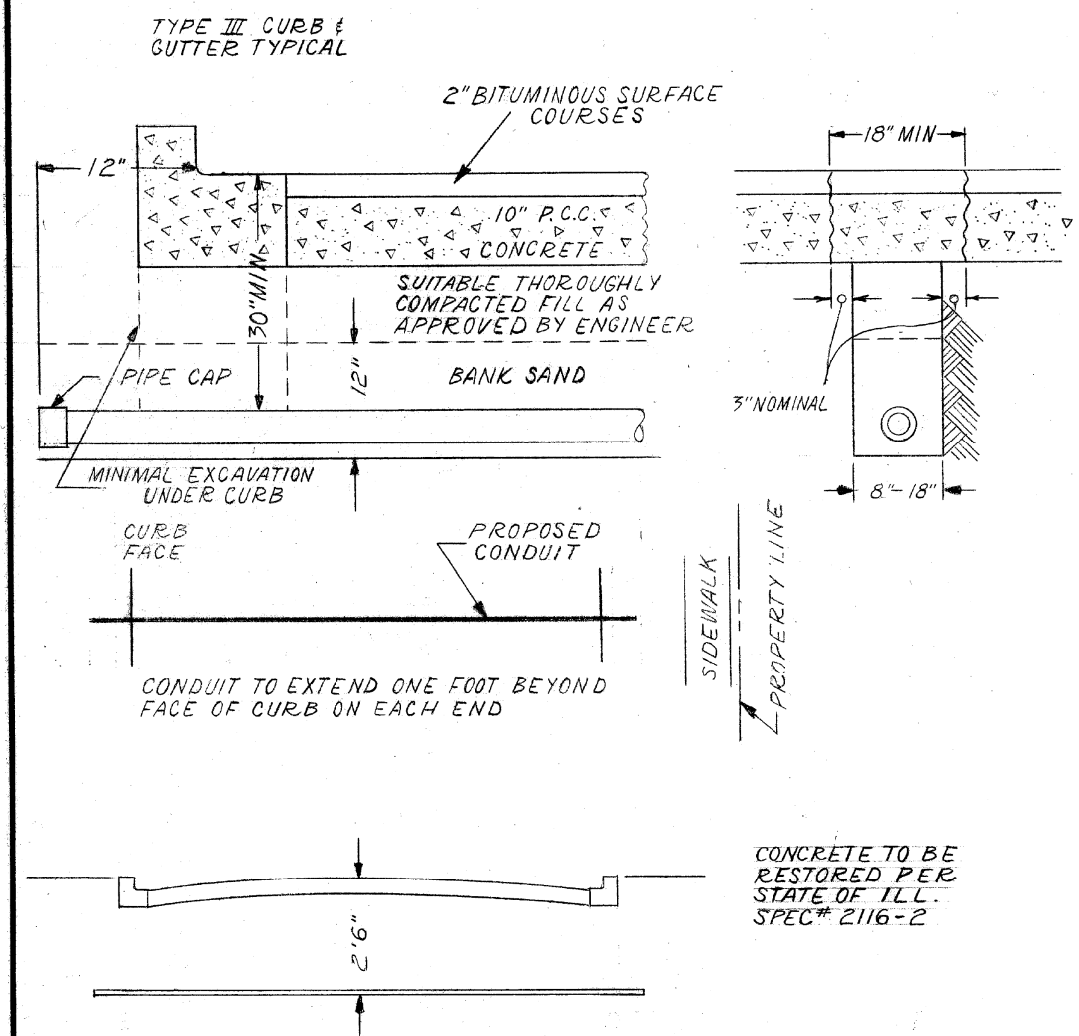


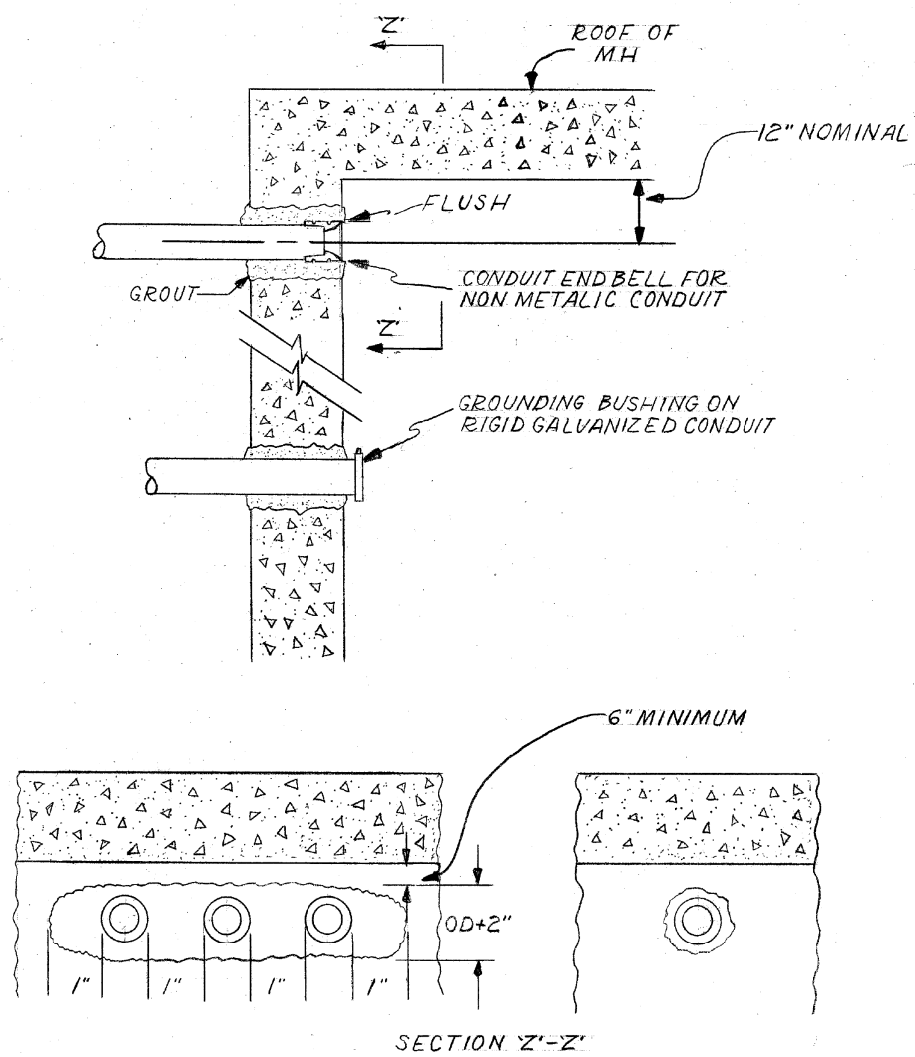
CONDUIT INSTALLATION UNDER PAVED STREET



CONCRETE TO BE RESTORED PER STATE OF ILL. SPEC# 2116-2

INSTALLATION METHOD OF INSTALLING CONDUIT UNDER PAVED ROADWAY		
CITY OF CHICAGO DEPT. OF STREETS AND SANITATION BUREAU OF ELECTRICITY DIVISION OF ELECTRICAL ENGINEERING		
DRAWN A.M. JOHNSON	CHECKED R. SYCKOWSKI	ENGINEER R.L. MARTIN
ENGINEER OF ELECTRICITY		DRG. NO. 813
DEPUTY CHIEF Charles E. Buckley		DATE 3-13-81
SIZE 8 1/2" X 14"	SCALE N.T.S.	DATE 3-13-81

CONDUIT INSTALLATION THROUGH EXISTING MANHOLE OR HANDHOLE WALL



OPENING THROUGH WALL TO BE KEPT TO MINIMUM SIZE TO ADMIT CONDUIT AND SUFFICIENT GROUT TO ASSURE SEALING WALL.

INSTALLATION METHOD OF INSTALLING CONDUIT THRU MANHOLE WALL		
CITY OF CHICAGO DEPT. OF STREETS AND SANITATION BUREAU OF ELECTRICITY DIVISION OF ELECTRICAL ENGINEERING		
DRAWN A.M. JOHNSON	CHECKED R. SYCKOWSKI	ENGINEER R.L. MARTIN
ENGINEER OF ELECTRICITY		DRG. NO. 814
DEPUTY CHIEF Charles E. Buckley		DATE 3-13-81
SIZE 8 1/2" X 14"	SCALE N.T.S.	DATE 3-13-81

FILE PATH = p:\388035\pmt\escomon\me\local\p\AECOM\0\Documents\01_Americas\Transportation\6269938_Circle\Phase_1\1\000_CAD\016_Electrical\Sheets\60W71_Contract\160W71-sht-Light-16



D160W71-sht-Light-16
USER NAME = myersc
PLOT SCALE = 1:8000 / 1" = 80'
PLOT DATE = 12/18/2013

DESIGNED - WDS
DRAWN - CAM
CHECKED - WDS
DATE - 12/20/13

STATE OF ILLINOIS
DEPARTMENT OF TRANSPORTATION

MISCELLANEOUS ELECTRICAL DETAILS
SCALE: N.T.S. SHEET 16 OF 19 SHEETS STA. TO STA.

F.A.I. R.E.	SECTION	COUNTY	TOTAL SHEETS	SHEET NO.
90/94/290	2013-036R	COOK	256	88
CONTRACT NO. 60W71				
ILLINOIS FED. AID PROJECT				