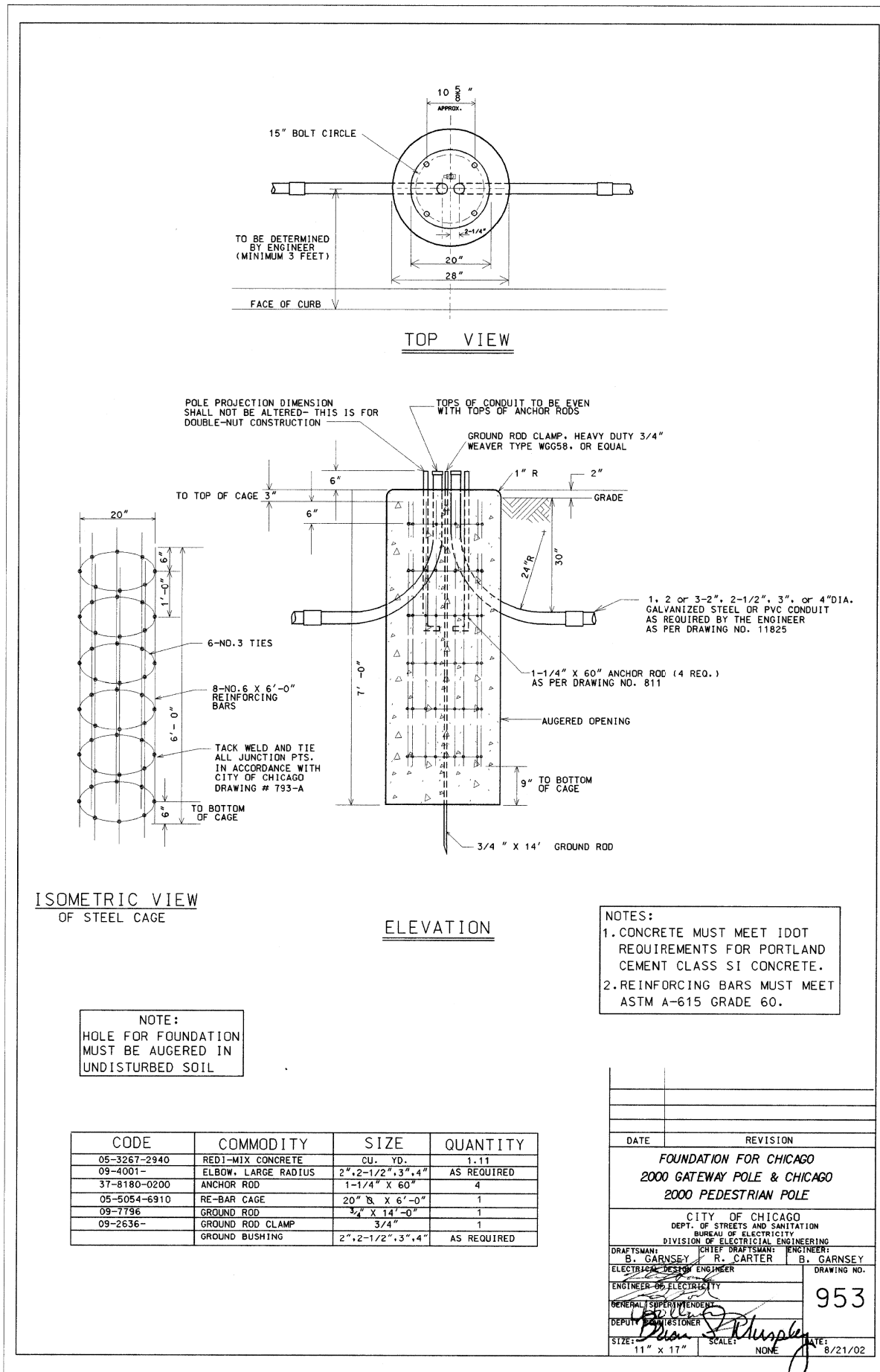


FILE PATH = p:\388935-pantl\escomonline\local\p\ae\000\Documents\01_Americas\Transportation\62629938_Circle\Phase_1\000_CAD\016_Electrical\Sheets\60W71_Contract\0160W71-sht-Light-19



NOTES:

1. CONCRETE MUST MEET IDOT REQUIREMENTS FOR PORTLAND CEMENT CLASS SI CONCRETE.
2. REINFORCING BARS MUST MEET ASTM A-615 GRADE 60.

CODE	COMMODITY	SIZE	QUANTITY
05-3267-2940	REDI-MIX CONCRETE	CU. YD.	1.11
09-4001-	ELBOW, LARGE RADIUS	2", 2-1/2", 3", 4"	AS REQUIRED
37-8180-0200	ANCHOR ROD	1-1/4" X 60"	4
05-5054-6910	RE-BAR CAGE	20" X 6'-0"	1
09-7796	GROUND ROD	3/4" X 14'-0"	1
09-2636-	GROUND ROD CLAMP	3/4"	1
	GROUND BUSHING	2", 2-1/2", 3", 4"	AS REQUIRED

DATE: _____ REVISION: _____

FOUNDATION FOR CHICAGO 2000 GATEWAY POLE & CHICAGO 2000 PEDESTRIAN POLE

CITY OF CHICAGO
DEPT. OF STREETS AND SANITATION
BUREAU OF ELECTRICITY
DIVISION OF ELECTRICAL ENGINEERING

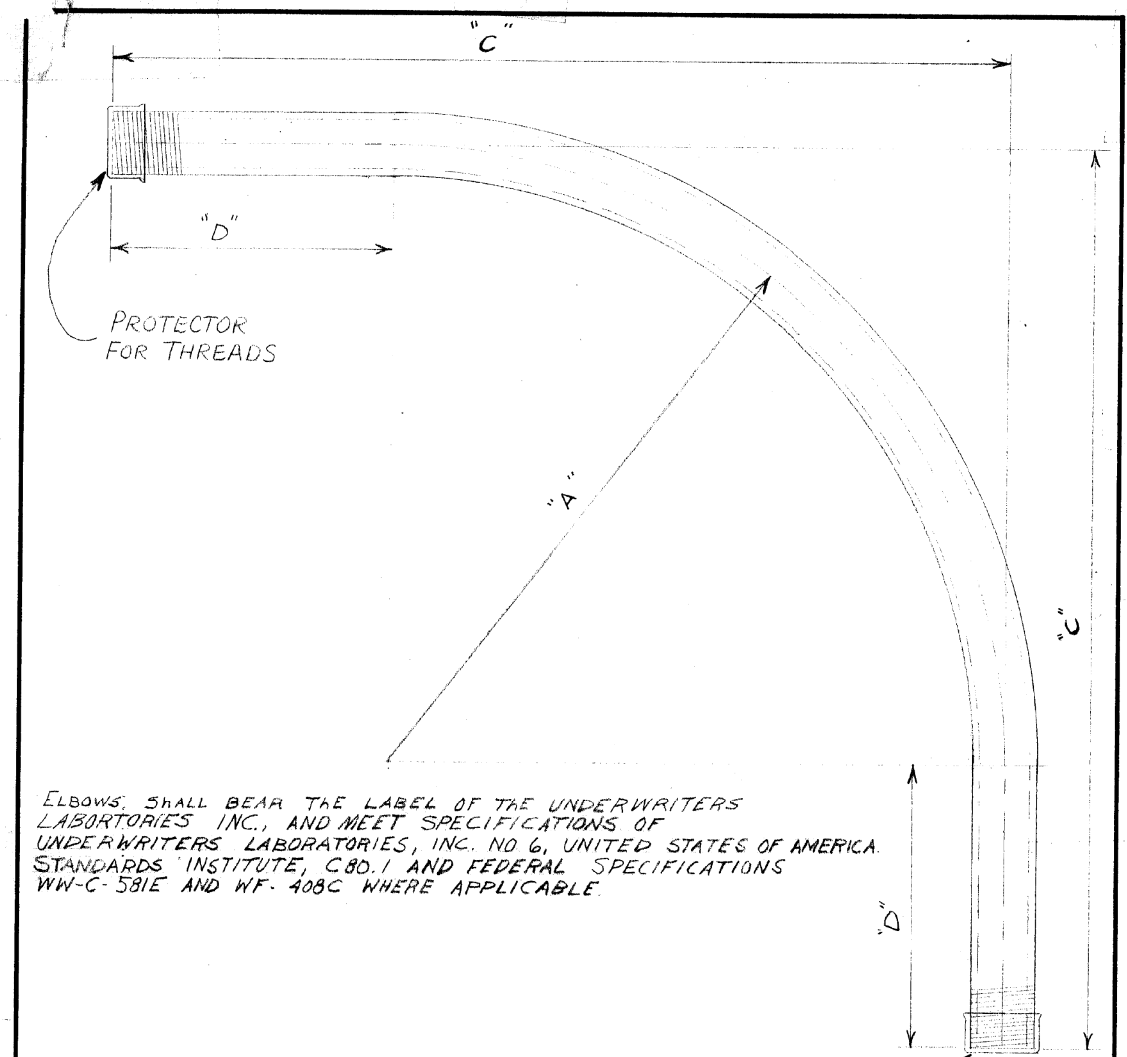
DRAFTSMAN: B. GARNSEY
ELECTRICAL DESIGN ENGINEER

CHIEF DRAFTSMAN: R. CARTER
ENGINEER

ENGINEER: B. GARNSEY
DRAWING NO. 953

GENERAL SUPERVISOR: _____
DEPUTY SUPERVISOR: _____

SIZE: 11" x 17" SCALE: NONE DATE: 8/21/02



ELBOWS SHALL BEAR THE LABEL OF THE UNDERWRITERS LABORATORIES INC., AND MEET SPECIFICATIONS OF UNDERWRITERS LABORATORIES, INC. NO 6, UNITED STATES OF AMERICA. STANDARDS INSTITUTE, C80.1 AND FEDERAL SPECIFICATIONS WW-C-581E AND WF-408C WHERE APPLICABLE.

NOTE:
TWO THREAD PROTECTORS TO BE FURNISHED ON EACH ELBOW, PROTECTOR TO COVER A MINIMUM OF TEN THREADS.

TABLE OF DIMENSIONS

CONDUIT SIZE	DIMENSIONS			COMMODITY CODE
	"A"	"C"	"D"	
1 1/4"	24"	35"	11"	09-4001-0510
1 1/2"	24"	35"	11"	09-4001-0520
2"	24"	35"	11"	09-4001-4126
2 1/2"	24"	35"	11"	09-4001-4128
3"	24"	35"	11"	09-4001-4230
4"	24"	35"	11"	09-4001-0000

B SPECIFICATIONS REVISED
A REVISED DIMENSIONS ON 3" X 4" CONDUIT L.P.

ELBOW, CONDUIT, RIGID GALVANIZED STEEL, LARGE RADIUS

REVISED	CITY OF CHICAGO		
	DEPT. OF STREETS AND SANITATION BUREAU OF ELECTRICITY DIVISION OF ELECTRICAL ENGINEERING		
A 7-22-71	DRAWN	CHECKED	ENGINEER
B 4-3-79	LON BURDY	M.S.	M. SHINE
C			DRG. NO.
D			11825
E			
F			
G			

SIZE 8 1/2" X 14" SCALE: 3/16" DATE 6-2-71



D160W71-sht-Light-19
USER NAME = myersc
PLOT SCALE = 1:0000 / 1/8"
PLOT DATE = 12/18/2013

DESIGNED - WDS
DRAWN - CAM
CHECKED - WDS
DATE - 12/20/13

REVISED -
REVISED -
REVISED -
REVISED -

STATE OF ILLINOIS
DEPARTMENT OF TRANSPORTATION

MISCELLANEOUS ELECTRICAL DETAILS

SCALE: N.T.S. SHEET 19 OF 19 SHEETS STA. TO STA.

F.A.I. RTE.	SECTION	COUNTY	TOTAL SHEETS	SHEET NO.
90/94/290	2013-036R	COOK	256	91

CONTRACT NO. 60W71
ILLINOIS FED. AID PROJECT