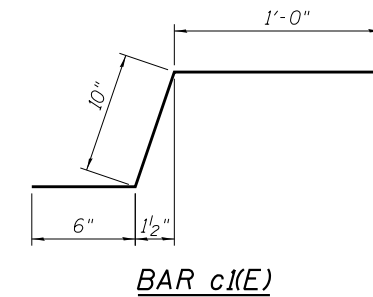
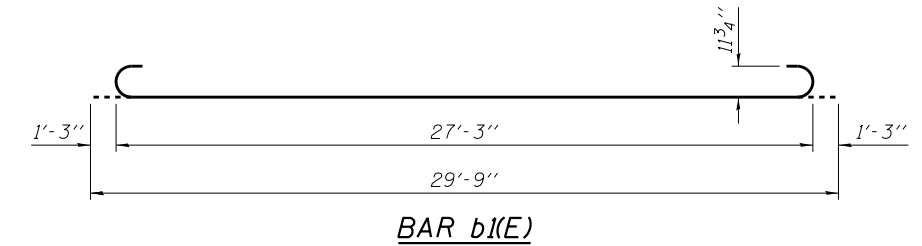
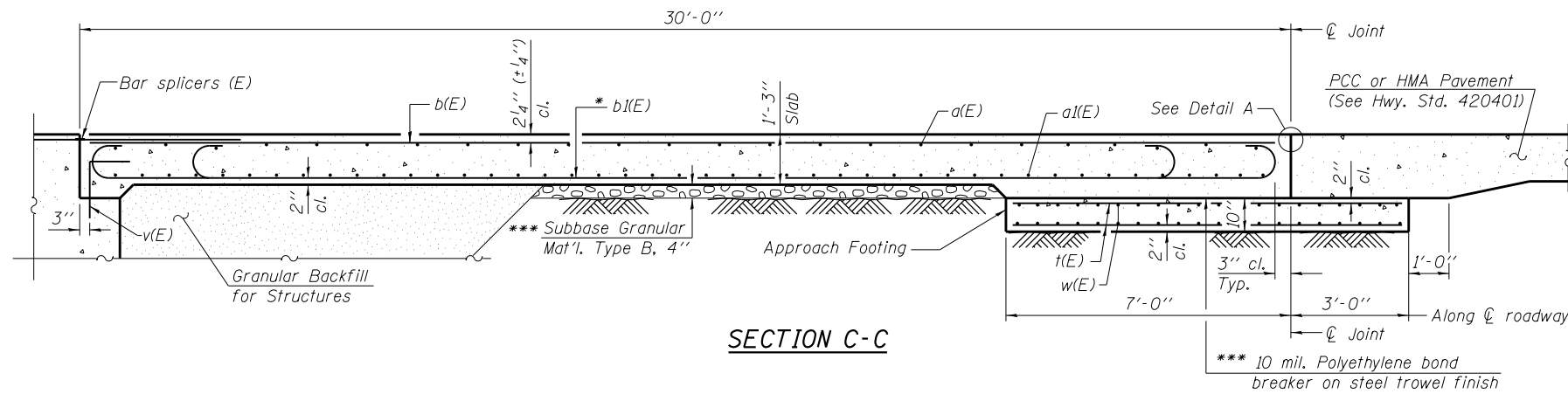


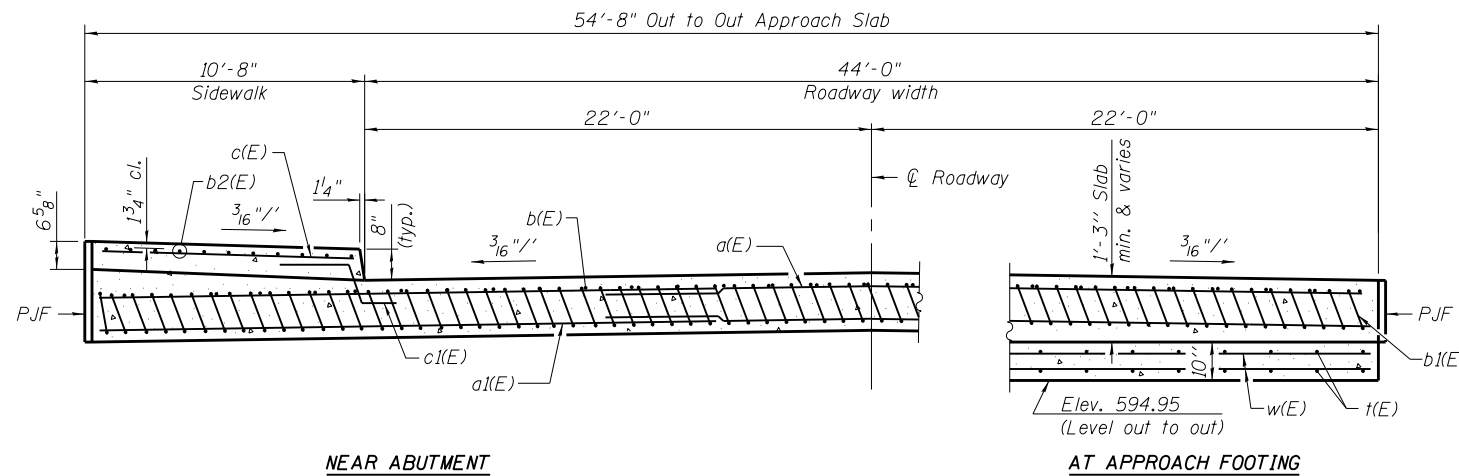
NOTES:

See sheet S-22 of S-47 for Detail A.
 Approach slab concrete shall be paid for as Concrete Superstructure.
 Approach footing concrete shall be paid for as Concrete Structures.
 Reinforcement shall be paid for as Reinforcement Bars, Epoxy Coated.
 For v(E) bar details, see sheet S-31 of S-47.
 The approach footing maximum applied service bearing pressure (Qmax) = 2.0 ksf.
 For bar splicer details, see sheet S-44 of S-47.
 Cost of excavation for approach footing included with Concrete Structures.
 For Granular Backfill for Structures details, see sheet S-03 of S-47.



* Tilt #9 b1(E) bars as required to maintain clearance.

*** Cost included with Concrete Superstructure.



NEAR ABUTMENT

AT APPROACH FOOTING

SECTION D-D

(See Plan for dimensions not shown)

BILL OF MATERIAL

Bar	No.	Size	Length	Shape
a1(E)	50	#4	28'-6"	—
a1(E)	92	#5	28'-10"	—
a2(E)	24	#5	3'-6"	—
b(E)	45	#4	29'-8"	—
b1(E)	132	#9	29'-9"	⌋
b2(E)	11	#5	29'-8"	—
c(E)	31	#5	10'-4"	—
c1(E)	31	#5	2'-4"	⌋
t(E)	110	#4	9'-8"	—
w(E)	80	#5	28'-10"	—
Concrete Superstructure			Cu. Yd.	92
Concrete Structures			Cu. Yd.	17
Reinforcement Bars, Epoxy Coated			Pound	21,920
Protective Coat			Sq. Yd.	194
Bridge Deck Grooving			Sq. Yd.	140

0161711-60W71-S23-Appr Slab



USER NAME = dunkerleyb	DESIGNED - EJO	REVISED
PLOT SCALE = N.T.S.	CHECKED - DD	REVISED
PLOT DATE = 12/17/2013	DRAWN - BRD	REVISED
	CHECKED - DD	REVISED

STATE OF ILLINOIS
DEPARTMENT OF TRANSPORTATION

WEST APPROACH SLAB DETAILS
STRUCTURE NO. 016-1711

SHEET NO. S-23 OF S-47 SHEETS

F.A.I. RTE.	SECTION	COUNTY	TOTAL SHEETS	SHEET NO.
90/94/290	2013-036R	COOK	256	115
CONTRACT NO.			60W71	
ILLINOIS FED. AID PROJECT -NUMBER-				