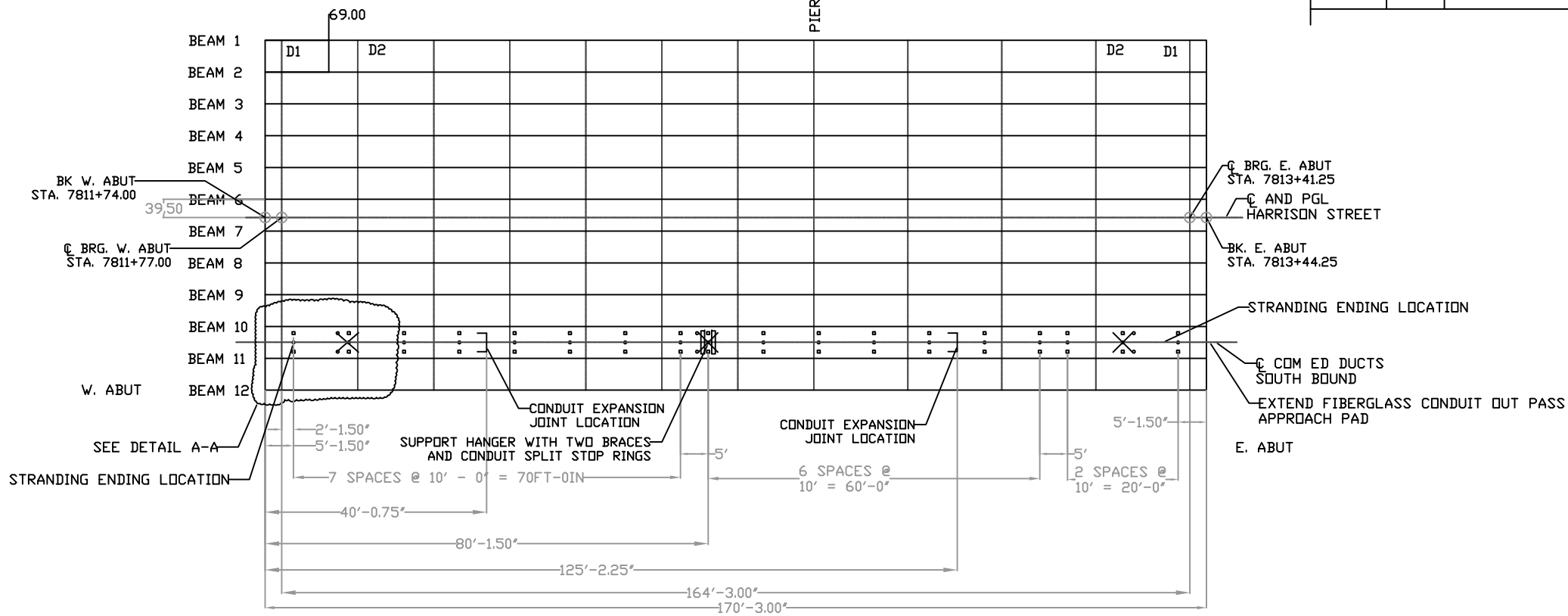
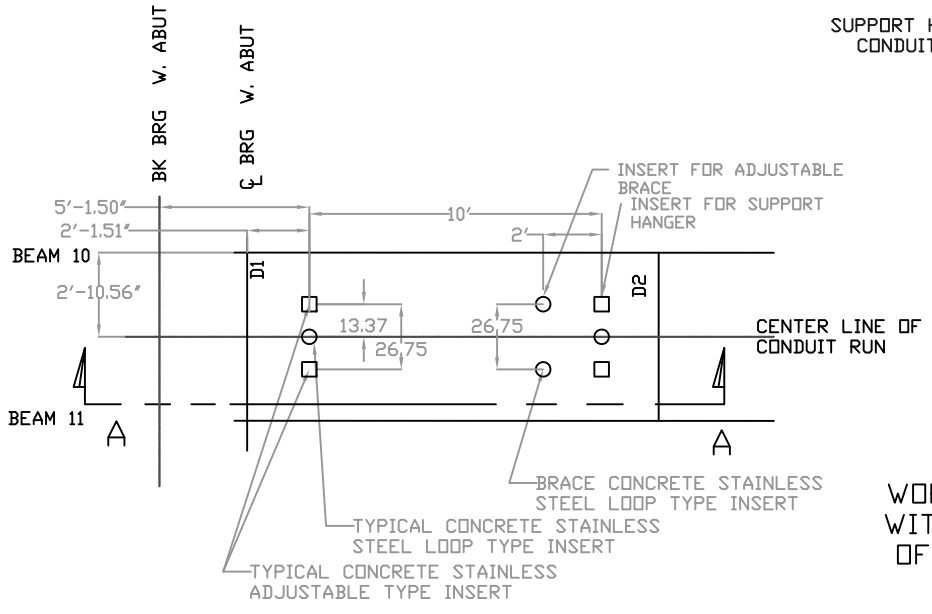


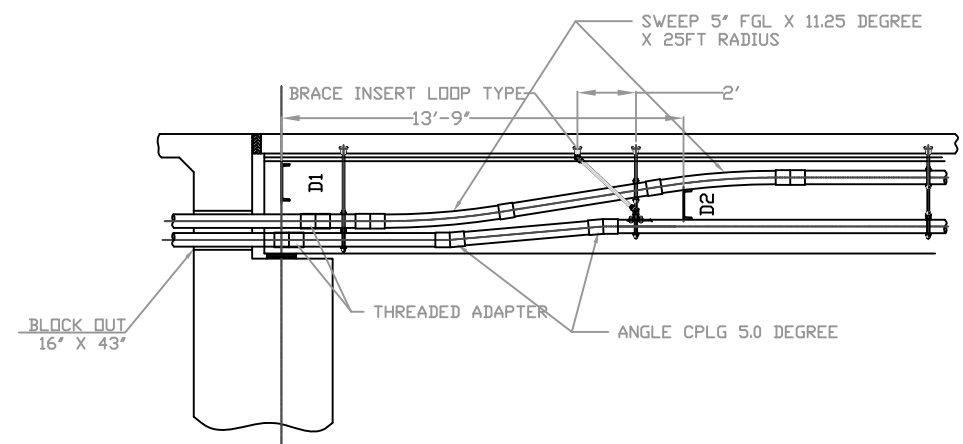
| REVISIONS | | | | |
|-----------|-----|-------------|------|----------|
| ZONE | REV | DESCRIPTION | DATE | APPROVED |
| | | | | |
| | | | | |



SUPPORT HANGER AND CONDUIT LAYOUT



DETAIL A-A
CONCRETE INSERT LAYOUT DETAIL
SCALE 4:1



SECTION A-A

FOR INFORMATION ONLY
WORK TO BE PERFORMED BY OTHERS
WITH THE EXCEPTION OF PLACEMENT
OF INSERTS INTO SUPERSTRUCTURE

This drawing is the property of Condux International, Inc. and the information thereon is to be treated as confidential. It is not to be used, copied or disclosed to outside parties without our written consent.

Note:
ALL MEASUREMENTS ARE IN INCHES UNLESS NOTED OTHERWISE

DRAWING APPROVAL
I _____
APPROVE THIS DRAWING FOR MANUFACTURING
DATE: _____

| | | | | |
|------------------------------------|---|------------------|------------------|---------|
| CONDUIT SUPPORT AND CONDUIT LAYOUT | CONDUX INTERNATIONAL, INC. MANKATO MN PH. 800-533-2077 | | | |
| | Project: ComEd Harrison Street East Bridge over F.A.I. RTE NB 90/94 Dan Ryan Expressway, Cook County Illinois | | | |
| WEIGHT: 0.0 LBS EA | SIZE | FSCM NO. | DWG NO. TBA | REV 0.0 |
| QUOTE NO. 3985218599 | SCALE 1/2 | DATE: 12-09-2013 | SHEET 141 OF 256 | |