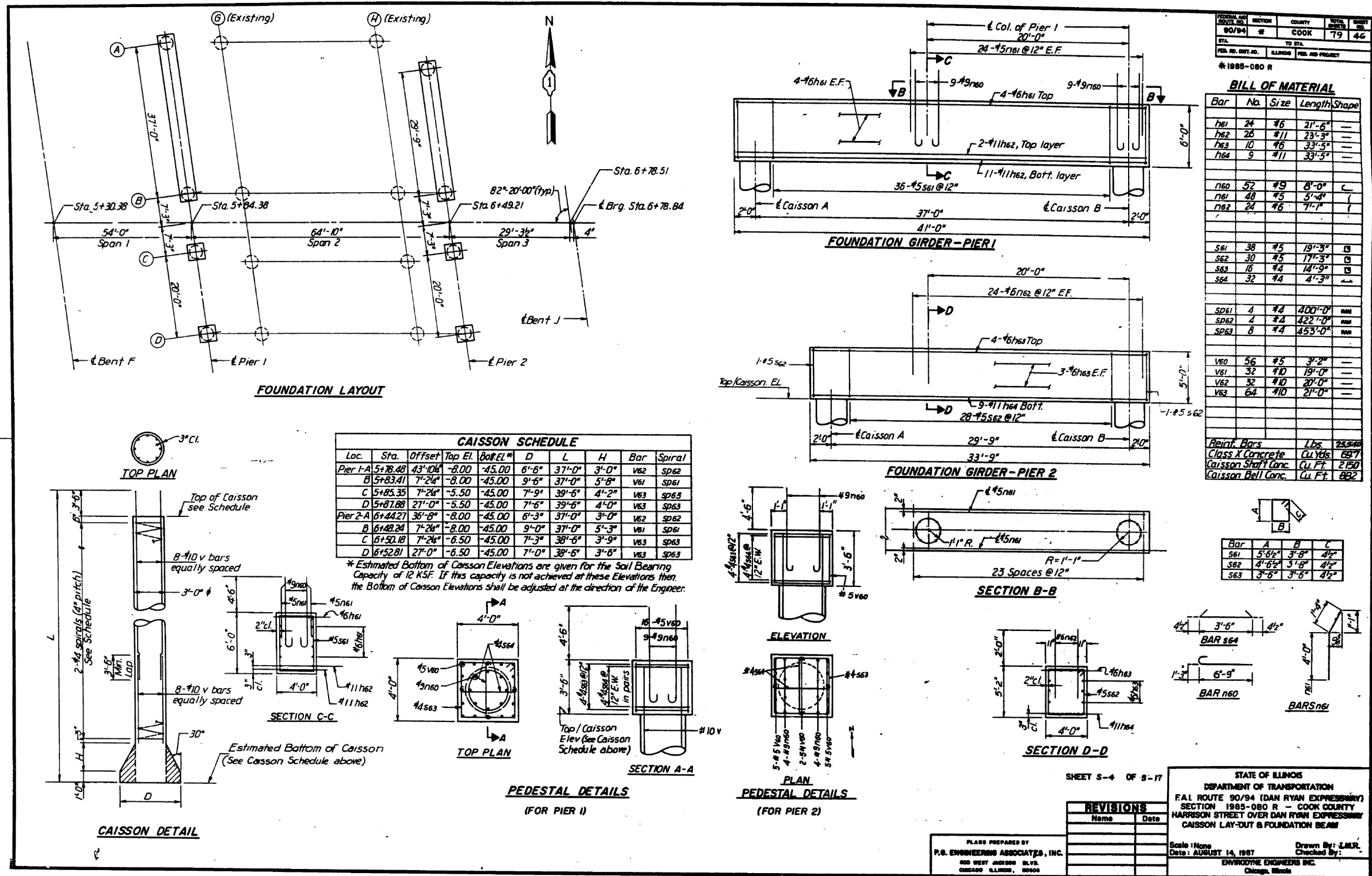


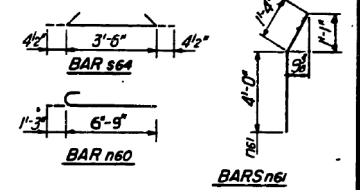
FOR INFORMATION ONLY



FEDERAL AID DIST. NO.	SECTION	COUNTY	TOTAL SHEETS	SHEET NO.
90/94	#	COOK	79	46
STA.	TO STA.			
FED. RD. DIST. NO.	ILLINOIS	FED. AID PROJECT		

Bar	No.	Size	Length	Shape
h61	24	#6	27'-6"	—
h62	26	#11	23'-9"	—
h63	10	#6	33'-5"	—
h64	9	#11	33'-5"	—
n60	52	#9	8'-0"	C
n61	48	#5	5'-4"	(
n62	24	#6	7'-7"	(
s61	38	#5	19'-3"	B
s62	30	#5	17'-3"	B
s63	16	#4	14'-9"	B
s64	32	#4	4'-3"	—
sp61	4	#4	400'-0"	MM
sp62	4	#4	422'-0"	MM
sp63	6	#4	453'-0"	MM
v60	56	#5	3'-2"	—
v61	32	#10	19'-0"	—
v62	32	#10	20'-0"	—
v63	64	#10	21'-0"	—
Rein. Bars		Lbs.	25,540	
Class X Concrete		Cu Yds.	687	
Caisson Shaft Conc.		Cu Ft.	2,150	
Caisson Bell Conc.		Cu Ft.	802	

Bar	A	B	C
s61	5'-6"	3'-8"	4"
s62	4'-6"	3'-8"	4"
s63	3'-6"	3'-6"	4"



SHEET 5-4 OF 8-17

STATE OF ILLINOIS  
DEPARTMENT OF TRANSPORTATION  
F.A.L ROUTE 90/94 (DAN RYAN EXPRESSWAY)  
SECTION 1985-080 R - COOK COUNTY  
HARRISON STREET OVER DAN RYAN EXPRESSWAY  
CAISSON LAY-OUT & FOUNDATION BEAM

Scale: None  
Date: AUGUST 14, 1987  
Drawn By: J.M.R.  
Checked By:

ENWOOD ENGINEERS INC.  
Chicago, Illinois

Name	Date

PLANS PREPARED BY  
P.E. ENGINEERS ASSOCIATES, INC.  
800 WEST JACKSON BLVD.  
CHICAGO ILLINOIS, 60606

USER NAME = dunkerleyb	DESIGNED -	REVISED -
PLOT SCALE = N.T.S.	CHECKED -	REVISED -
PLOT DATE = 11/26/2013	DRAWN -	REVISED -
	CHECKED -	REVISED -

STATE OF ILLINOIS  
DEPARTMENT OF TRANSPORTATION

EXISTING AS-BUILTS SN 016-1088

SHEET NO. AS-07 OF AS-72 SHEETS

F.A.I. R.E.	SECTION	COUNTY	TOTAL SHEETS	SHEET NO.
90/94/290	2013-036R	COOK	256	149
CONTRACT NO. 60W71				
ILLINOIS FED. AID PROJECT -NUMBER-				

D:\60W71-sht-AS-BUILT-07.dgn