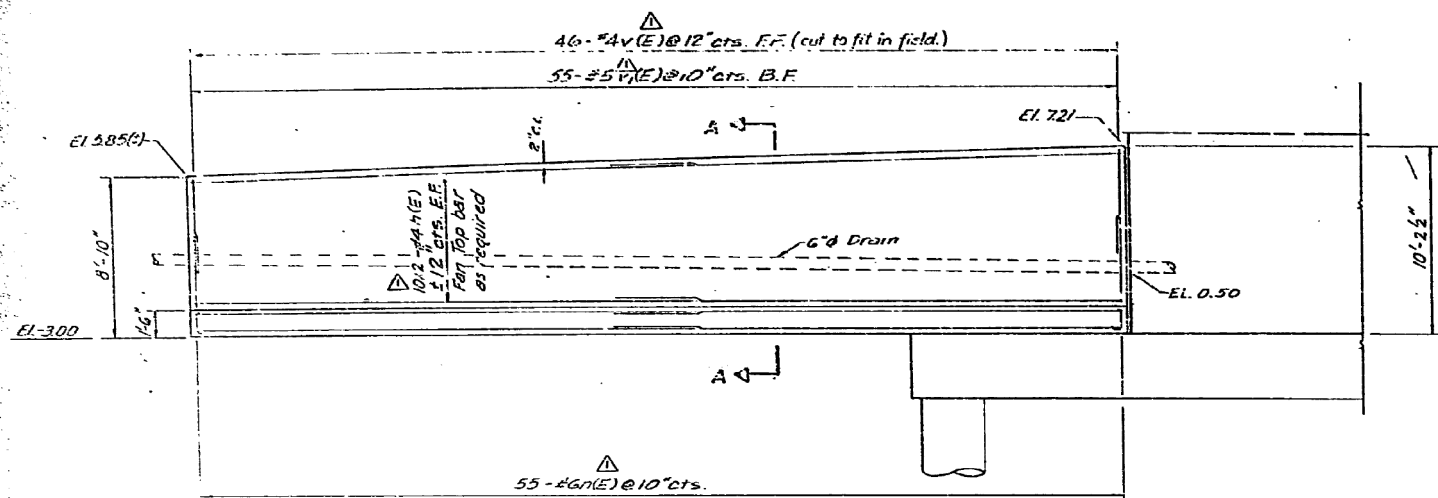
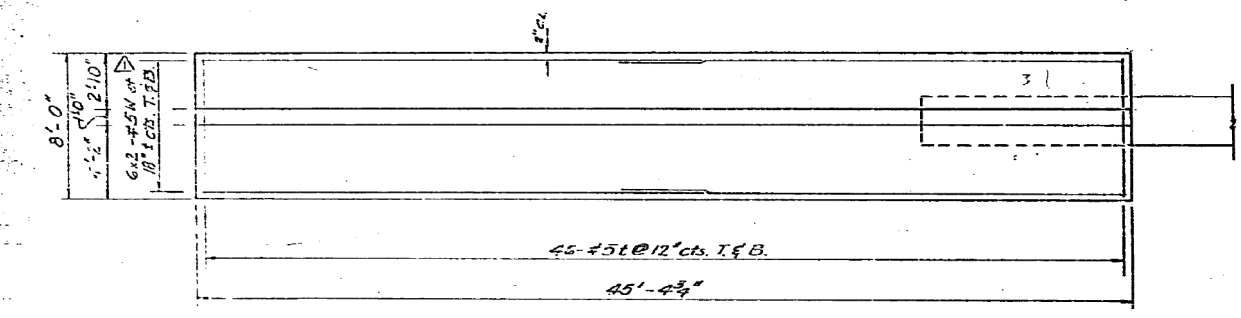


FOR INFORMATION ONLY

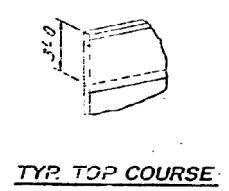
SECTION	QUANTITY	DATE	BY
90/94	8	COOK	79
P.L.A. NO. 089.00		ILLINOIS FED. AID PROJECT	
W 1985-080 R			



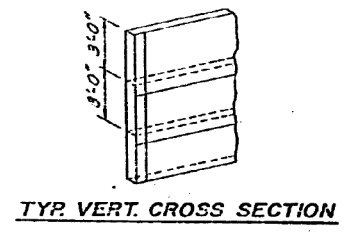
ELEVATION (Looking East)



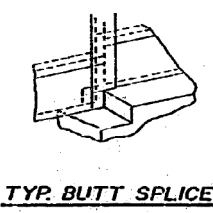
PLAN



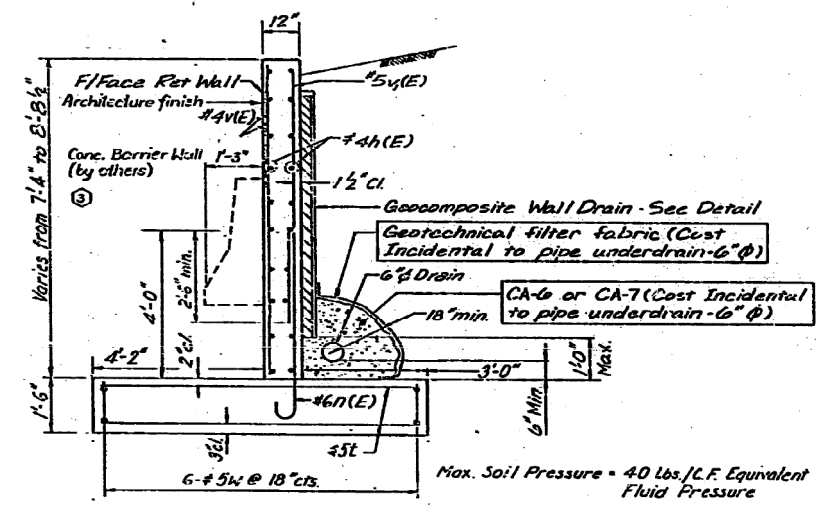
TYP. TOP COURSE



TYP. VERT. CROSS SECTION  
GEOCOMPOSITE DRAIN DETAIL

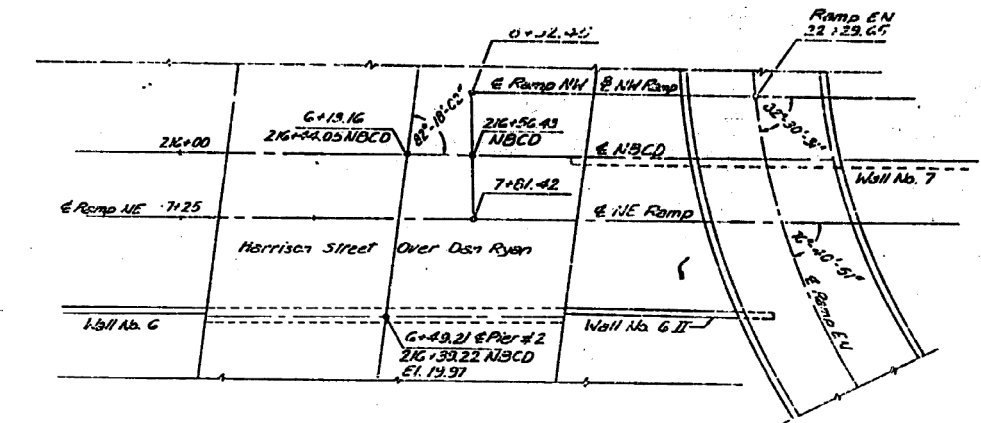


TYP. BUTT SPLICE



SECTION A-A  
(Typical Detail for Wall Drain System)

- △ Bars designated (E) shall be epoxy coated
- F.F. - Front Face of retaining wall
- B.B. - Back Face of retaining wall
- E.F. - Each Face of retaining wall
- ③ See sheet RW30 (Vol. No. 4) for architectural finish details.



LOCATION PLAN

WALL 6 II - BILL OF MATERIAL

Bar	No.	Size	Length	Shape
H(E)	40	#4	24'-0"	
V(E)	55	#5	5'-11"	
L	92	#5	7'-6"	
V(E)	16	#4	8'-6"	
V(E)	55	#5	7'-11"	
W	24	#5	24'-0"	
Item	Unit	Quantity		
Reinforcement Bars	lbs.	1940		
Class A Concrete	cu. yd.	33.7		
Protective Coat	sq. yd.	25		
Geocomposite Wall Drain	sq. yd.	30		
Pipe Underdrain - 6"	lin. ft.	15		
Reinforcement Bars	lbs.	1760		
Epoxy Coated				
Structure Excavation	cu. yd.	120		

SHEET 17 OF 17

REVISIONS	
Name	Date
Revision	3-11-88

Revision - Nov. 23, 1987

STATE OF ILLINOIS  
DEPARTMENT OF TRANSPORTATION  
F.A.I. ROUTE 90/94 (DAN RYAN EXPRESSWAY)  
SECTION 1985-080 R - COOK COUNTY  
HARRISON STREET OVER DAN RYAN EXPRESSWAY  
WALL 6 II

Scale: None  
Date: AUGUST 14, 1987  
Drawn By: S.R.D.  
Checked By:

ENVIRONMENTAL ENGINEERS INC.  
Chicago, Illinois

USER NAME = dunkerleyb	DESIGNED -	REVISED -
	CHECKED -	REVISED -
PLOT SCALE = N.T.S.	DRAWN -	REVISED -
PLOT DATE = 11/26/2013	CHECKED -	REVISED -

STATE OF ILLINOIS  
DEPARTMENT OF TRANSPORTATION

EXISTING AS-BUILTS SN 016-1088

SHEET NO. AS-20 OF AS-72 SHEETS

F.A.I. R.T.E.	SECTION	COUNTY	TOTAL SHEETS	SHEET NO.
90/94/290	2013-036R	COOK	256	162
CONTRACT NO. 60W71				ILLINOIS FED. AID PROJECT -NUMBER-

D:\60W71-SHT-AS-BUILT-20.dgn