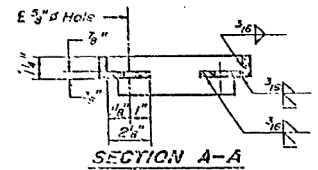


FOR INFORMATION ONLY

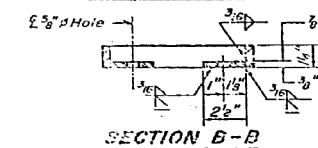
REINFORCEMENT BAR SCHEDULE *

Mark.	No.	Size	Length	Shape
Side	16	#5	2'-0"	
Side	12	#5	1'-0"	

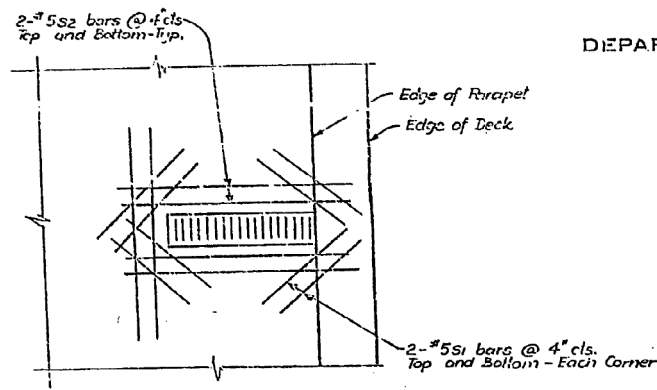
* Per scupper



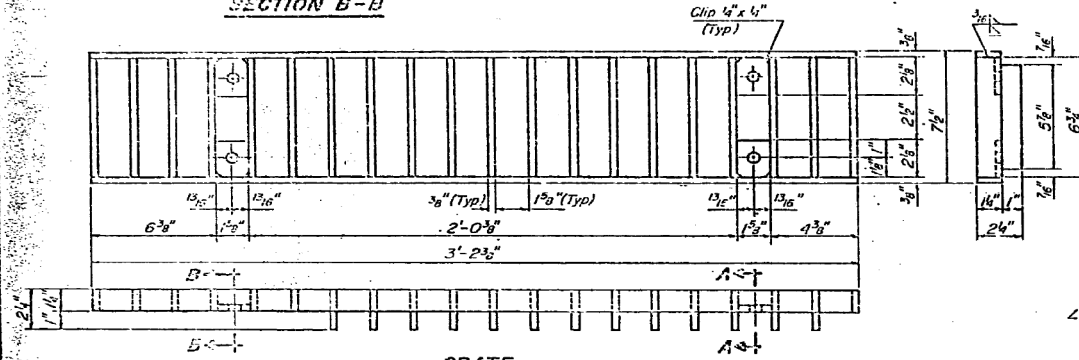
SECTION A-A



SECTION B-B

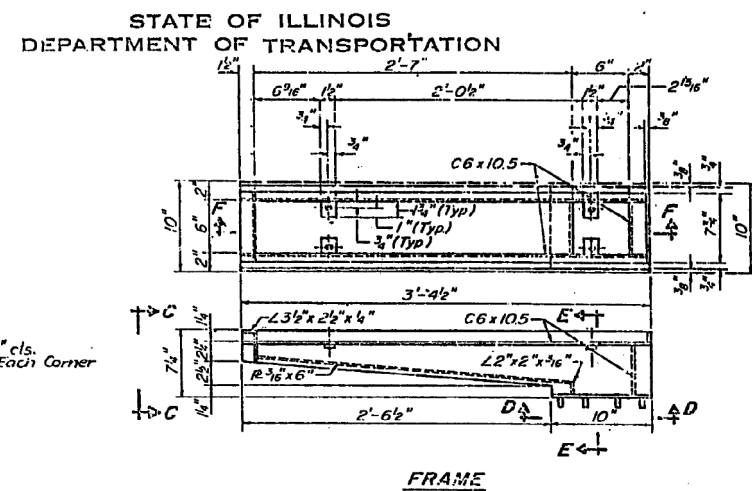


SCUPPER DECK REINFORCING DETAIL

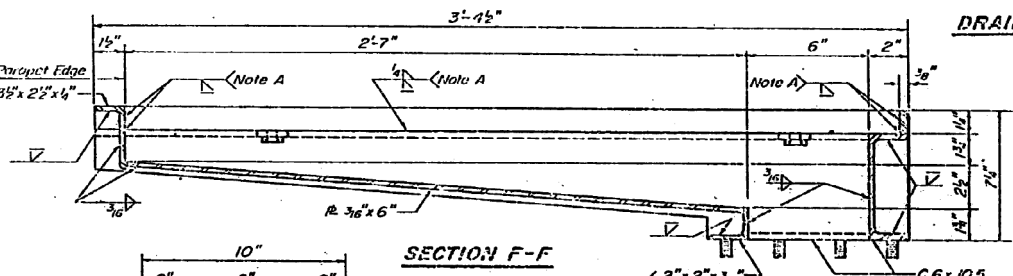


GRATE

Notes:
 Hollow structural steel tubing shall conform to the requirements of A.S.T.M. designation A-500 Grade B, or A-501 Structural Steel Tubing.
 All other shapes, plates and bars shall conform to the requirements of A.A.S.H.T.O. M 103.
 Bolts, studs, washers and nuts shall conform to the requirements of A.S.T.M. A-307.
 The Grate, Frame, and Downspout shall be galvanized after shop fabrication in accordance with A.A.S.H.T.O. M-111 & A.S.T.M. A-385.
 All bolts, washers and nuts shall be galvanized in accordance with A.A.S.H.T.O. M 232.
 Cost of the Grate, Frame, Downspout, Bolts, Washers and Nuts including complete installation of Scupper shall be paid for at the unit bid price for "DRAINAGE SCUPPERS"

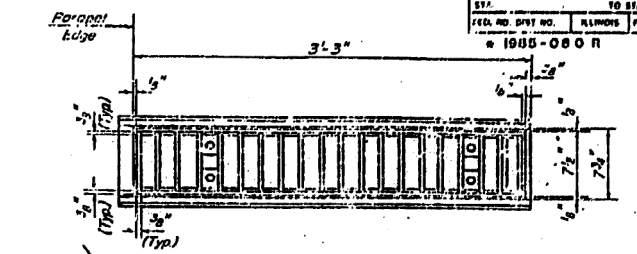


FRAME



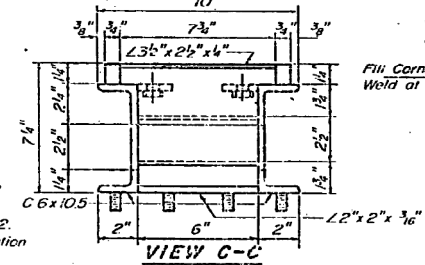
SECTION F-F

Note A: Surface of welds shall be recessed 1/16" Max. or placed flush with inside face of bars to provide clearance for Grate.

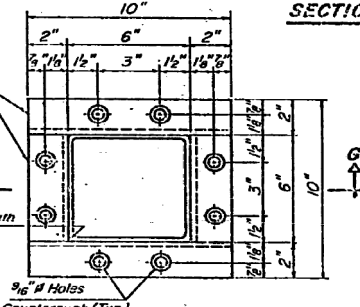


DRAINAGE SCUPPER

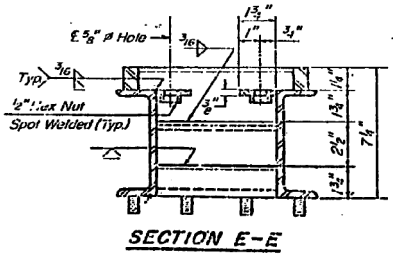
Seal Gap with Mastic (Cost incidental to downspout)



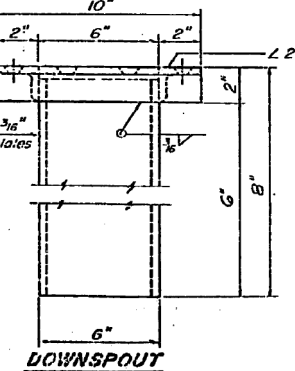
VIEW C-C



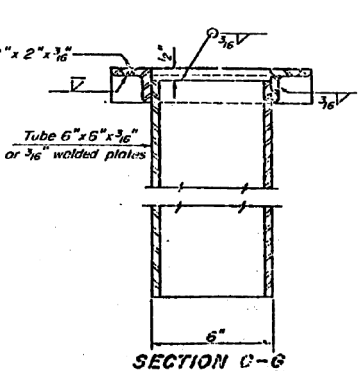
VIEW D-D



SECTION E-E



DOWNSPOUT



SECTION C-C

BILL OF MATERIAL

ITEM	UNIT	QUANTITY
Drainage Scupper	Each	1

SHEET MD 4 OF 8

REVISIONS

Name	Date
Revision	3-11-88

STATE OF ILLINOIS
 DEPARTMENT OF TRANSPORTATION
 F.A.I. ROUTE 90/94 (DAN RYAN EXPRESSWAY)
 SECTION 1986-080R - COOK COUNTY
 ROADWAY GRADING AND PAVING
 MISCELLANEOUS DETAILS - ALL STRUCTURES
 DRAINAGE SCUPPER, STEEL
 Scale: NONE
 Date: AUGUST 14, 1987
 Drawn By: REP
 Checked By: JPK
 ENVIRONMENTAL ENGINEERS INC.

D:\GOW71-SHT-AS-BUILT-24.dgn

USER NAME = dunkerleyb	DESIGNED -	REVISED -
PLOT SCALE = N.T.S.	CHECKED -	REVISED -
PLOT DATE = 11/26/2013	DRAWN -	REVISED -
	CHECKED -	REVISED -

STATE OF ILLINOIS
 DEPARTMENT OF TRANSPORTATION

EXISTING AS-BUILTS SN 016-1088

SHEET NO. AS-24 OF AS-72 SHEETS

F.A.I. RTE. 90/94/290	SECTION 2013-036R	COUNTY COOK	TOTAL SHEETS 256	SHEET NO. 166
				CONTRACT NO. 60W71
ILLINOIS FED. AID PROJECT -NUMBER-				