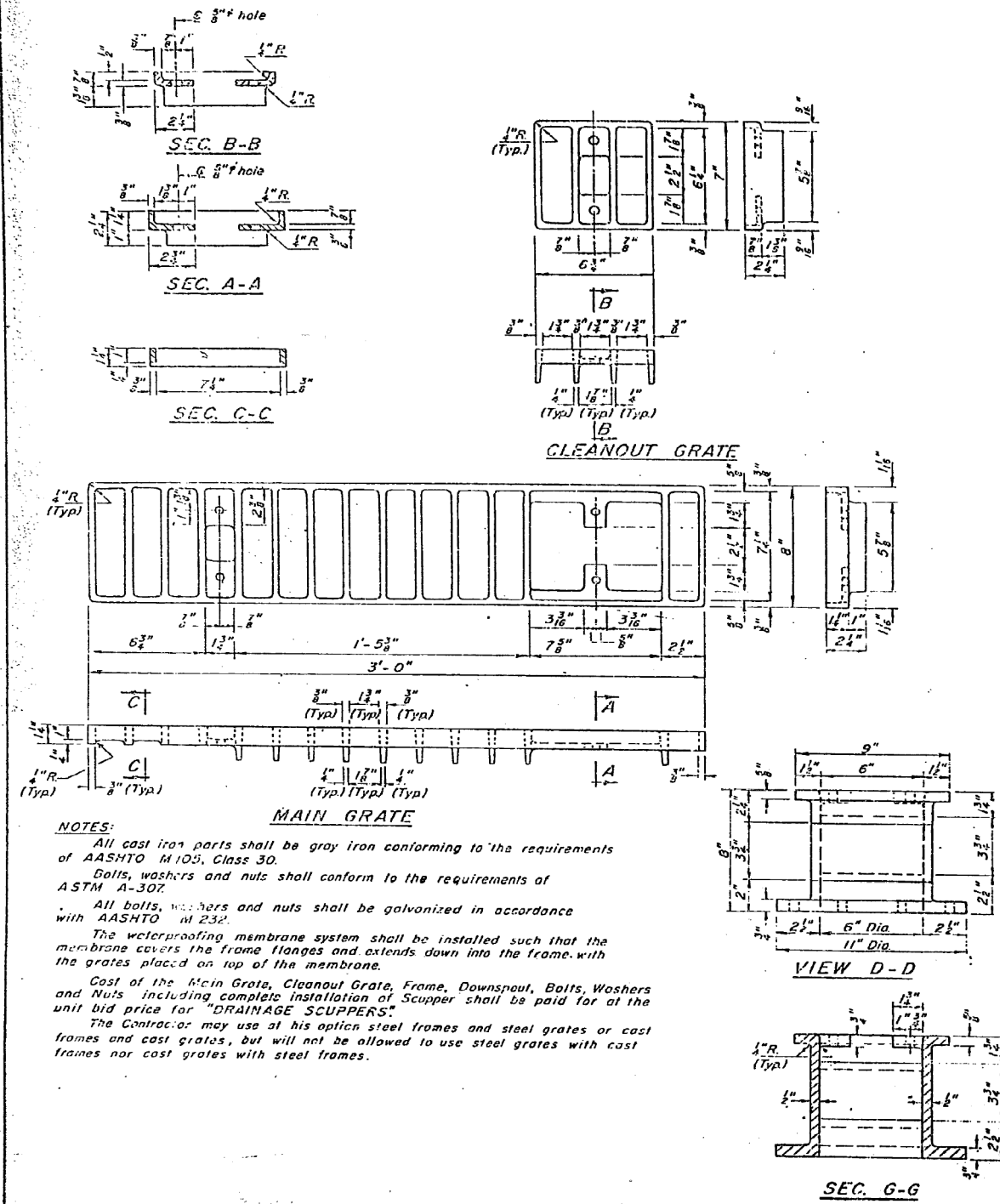


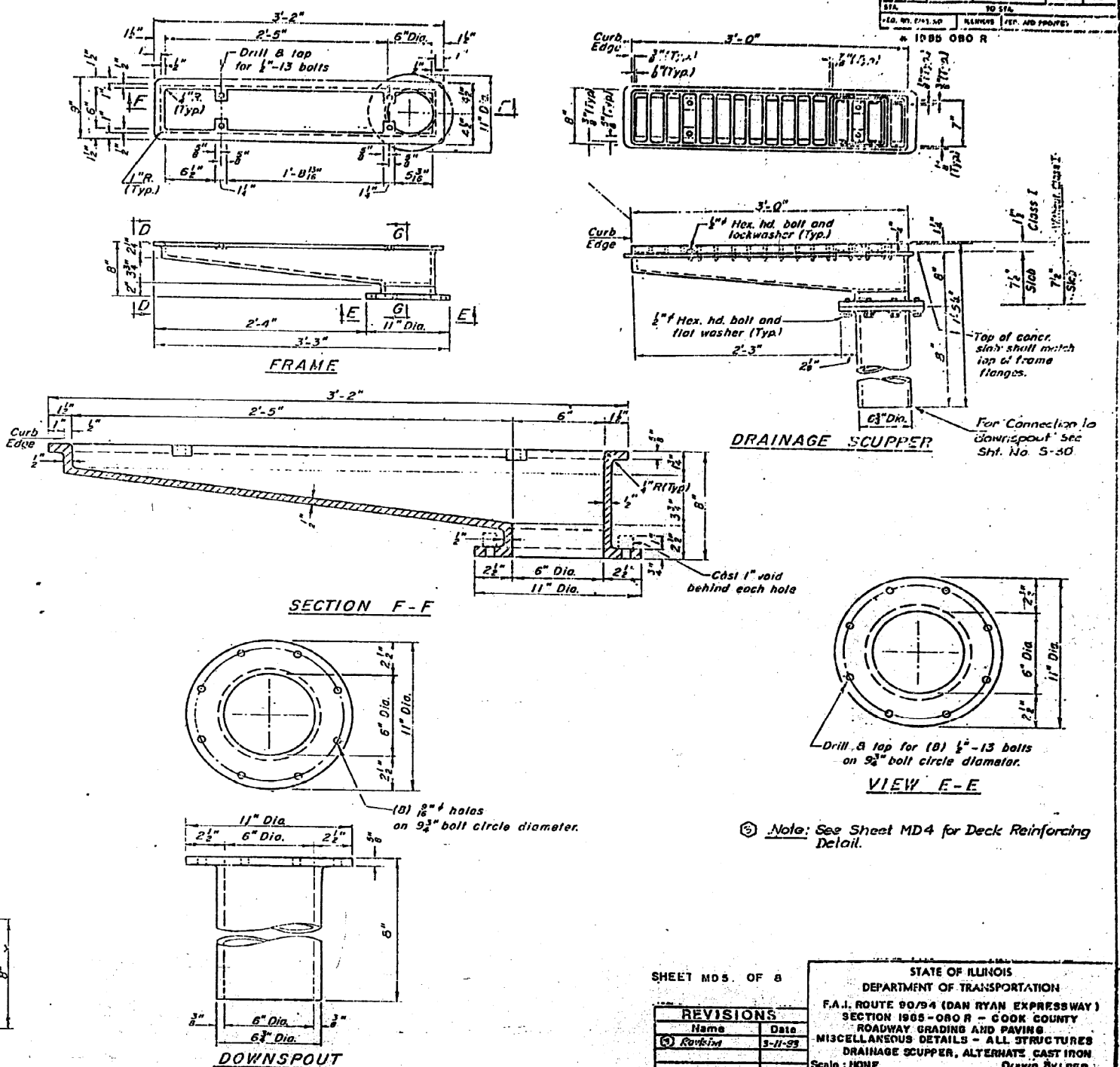
FOR INFORMATION ONLY

STATE OF ILLINOIS
DEPARTMENT OF TRANSPORTATION

SECTION	COUNTY	TOTAL SHEETS	SHEET NO.
1-90/94	COOK	70	78
JOB NO. 213.50			
ADDRESS (REF. AND PROJECT)			
* 1085 ORO R			



NOTES:
 All cast iron parts shall be gray iron conforming to the requirements of AASHTO M103, Class 30.
 Bolts, washers and nuts shall conform to the requirements of ASTM A-307.
 All bolts, washers and nuts shall be galvanized in accordance with AASHTO M 232.
 The waterproofing membrane system shall be installed such that the membrane covers the frame flanges and extends down into the frame with the grates placed on top of the membrane.
 Cost of the Main Grate, Cleanout Grate, Frame, Downspout, Bolts, Washers and Nuts including complete installation of Scupper shall be paid for at the unit bid price for "DRAINAGE SCUPPERS".
 The Contractor may use at his option steel frames and steel grates or cast frames and cast grates, but will not be allowed to use steel grates with cast frames nor cast grates with steel frames.



Note: See Sheet MD4 for Deck Reinforcing Detail.

SHEET MD5 OF 8

REVISIONS	
Name	Date
Rev: [Signature]	3-11-99

STATE OF ILLINOIS
 DEPARTMENT OF TRANSPORTATION
 F.A.I. ROUTE 90/94 (DAN RYAN EXPRESSWAY)
 SECTION 1085-ORO R - COOK COUNTY
 ROADWAY GRADING AND PAVING
 MISCELLANEOUS DETAILS - ALL STRUCTURES
 DRAINAGE SCUPPER, ALTERNATE CAST IRON
 Scale: NONE
 Date: AUGUST 14, 1997
 Drawn By: REP
 Checked By: WPK
 ENVIRONMENTAL ENGINEERS INC.
 Chicago, Illinois

USER NAME = dunkerleyb	DESIGNED -	REVISED
PLOT SCALE = N.T.S.	CHECKED -	REVISED
PLOT DATE = 11/26/2013	DRAWN -	REVISED
	CHECKED -	REVISED

STATE OF ILLINOIS
DEPARTMENT OF TRANSPORTATION

EXISTING AS-BUILTS SN 016-1088

SHEET NO. AS-25 OF AS-72 SHEETS

F.A.I. RTE.	SECTION	COUNTY	TOTAL SHEETS	SHEET NO.
90/94/290	2013-036R	COOK	256	167
CONTRACT NO. 60W71				ILLINOIS FED. AID PROJECT -NUMBER-

D:\60W71-sht-AS-BUILT-25.dgn