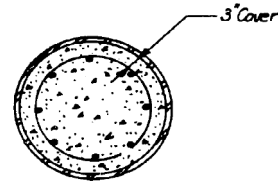
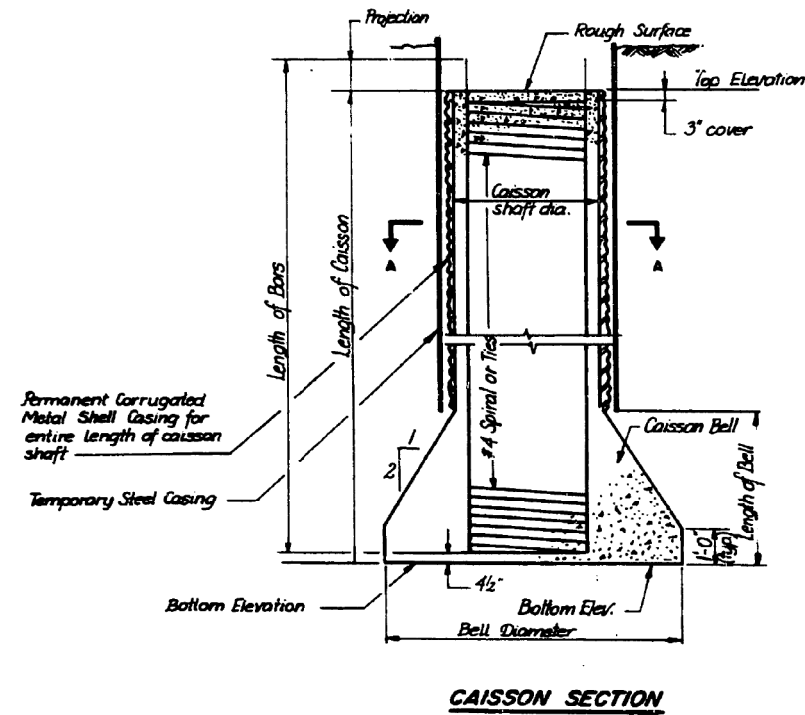


FOR INFORMATION ONLY

FEDERAL AID ROUTE NO.	SECTION	COUNTY	TOTAL SHEETS	SHEET NO.
90/94	#	COOK	79	79B
STA.	TO STA.			
FED. AID DIST. NO.	ILLINOIS	FED. AID PROJECT		
* 1985-080 R				



**SECTION A-A**  
(Temporary Steel Casing not shown in section A-A)

**Notes:**

- 1) Specific details for caissons as shown in the caisson section can be found on the following sheets:  
 Sheet Ent 12 for Taylor Street Exit Ramp Bent Nos. 3 & 4  
 Sheet ENT 12 for Taylor Street Entrance Ramp Bent Nos. 1 & 2  
 Sheet ENT 13 for Taylor Street Entrance Ramp Bent Nos. 3 & 4  
 Sheet S4 for Harrison Street Bridge Pier Nos. 1 & 2  
 Sheet EN2 for Ramp E-N Pier Nos. 27 & 28
- 2) Annular space between the temporary casing and permanent metal shell shall be back filled with grout before removing the temporary casing.

SHEET MD 8 OF 8

REVISIONS	
Name	Date

STATE OF ILLINOIS  
 DEPARTMENT OF TRANSPORTATION  
 F.A.I. ROUTE 90/94 (DAN RYAN EXPRESSWAY)  
 SECTION 1985-080 R - COOK COUNTY  
 ROADWAY GRADING AND PAVING  
 MISCELLANEOUS DETAILS - ALL STRUCTURES  
 TYPICAL CAISSON DETAILS  
 Scale: NONE  
 Date: AUG. 14, 1987  
 Drawn By: D.S.  
 Checked By: W.P.K.  
 ENVIRONMENTAL ENGINEERS INC.  
 Chicago, Illinois

△ New sheet 12-7-87

D:\60W71-shr-AS-BUILT-28.dgn

USER NAME = dunkerleyb	DESIGNED -	REVISED
	CHECKED -	REVISED
PLOT SCALE = N.T.S.	DRAWN -	REVISED
PLOT DATE = 11/26/2013	CHECKED -	REVISED

STATE OF ILLINOIS  
 DEPARTMENT OF TRANSPORTATION

EXISTING AS-BUILTS SN 016-1088

SHEET NO. AS-28 OF AS-72 SHEETS

F.A.I. RTE.	SECTION	COUNTY	TOTAL SHEETS	SHEET NO.
90/94/290	2013-036R	COOK	256	170
				CONTRACT NO. 60W71
ILLINOIS FED. AID PROJECT -NUMBER-				