

FILE PATH = p:\388035\pmt\lecomonline\local\p\AECOM\Documents\01\_Americas\Transportation\60269938\_Circle\Phase\_1\1600\_CND\006\_Roadway\Sheets\60W71\_Contract\0160W71-SHT-01-Detail-16-TC-211.dgn

**ROUTE MARKERS**

FOR U.S. ROUTES  
MI-40-2424

FOR ILLINOIS ROUTES  
MI-50-2424

R.R. UNMARKED ROUTES  
SPECIAL 24" x 18" VARIABLE  
4" BLACK LETTERS ON WHITE  
REFLECTIVE BACKGROUND

**ARROWS SIGNS**

M5-1L-2115

M5-1R-2115

M6-1-2115

M6-1-2115

M6-3-2115

**CARDINAL DIRECTION & DETOUR SIGNS**

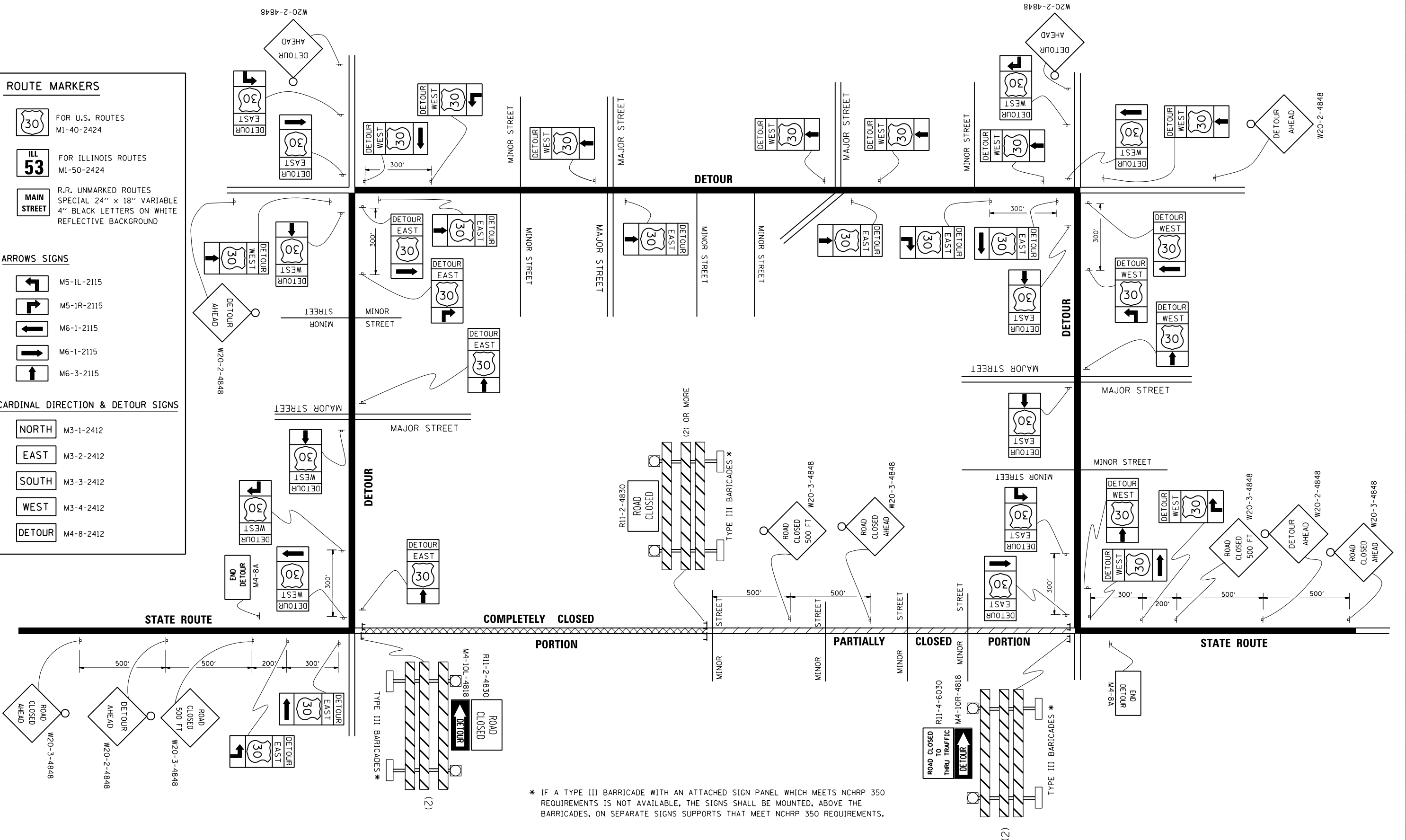
NORTH M3-1-2412

EAST M3-2-2412

SOUTH M3-3-2412

WEST M3-4-2412

DETOUR M4-8-2412



\* IF A TYPE III BARRICADE WITH AN ATTACHED SIGN PANEL WHICH MEETS NCHRP 350 REQUIREMENTS IS NOT AVAILABLE, THE SIGNS SHALL BE MOUNTED, ABOVE THE BARRICADES, ON SEPARATE SIGNS SUPPORTS THAT MEET NCHRP 350 REQUIREMENTS.



D160W71-SHT-01-Detail-16-TC-211.dgn  
 USER NAME = chhua  
 PLOT SCALE = 50.0000' / 1" =  
 PLOT DATE = 12/19/2013

DESIGNED -  
 DRAWN -  
 CHECKED -  
 DATE - 12/20/13

REVISED -10-18-02  
 REVISED -R. BORO 09-14-09  
 REVISED -  
 REVISED -

**STATE OF ILLINOIS  
 DEPARTMENT OF TRANSPORTATION**

**DETOUR SIGNING  
 FOR CLOSING STATE HIGHWAYS**

SCALE: NONE SHEET OF SHEETS STA. TO STA.

F.A.I. R.T.E. 90/94/290	SECTION 2013-036R	COUNTY COOK	TOTAL SHEETS 256	SHEET NO. 230
<b>TC-21</b>		<b>CONTRACT NO. 60W71</b>		
FED. ROAD DIST. NO. 1 ILLINOIS FED. AID PROJECT				