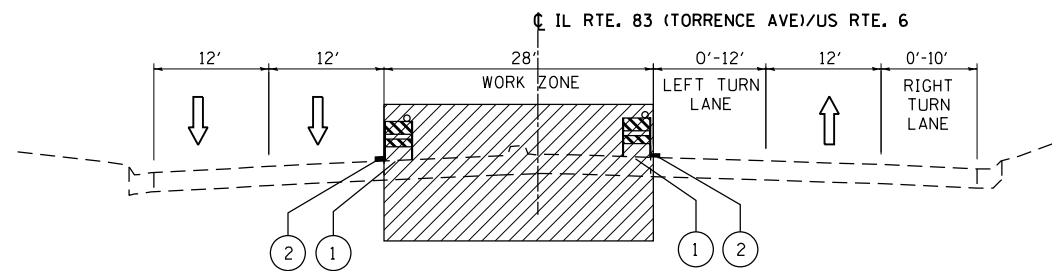


STAGE I - M.O.T. TYPICAL SECTION

U.S. ROUTE 6

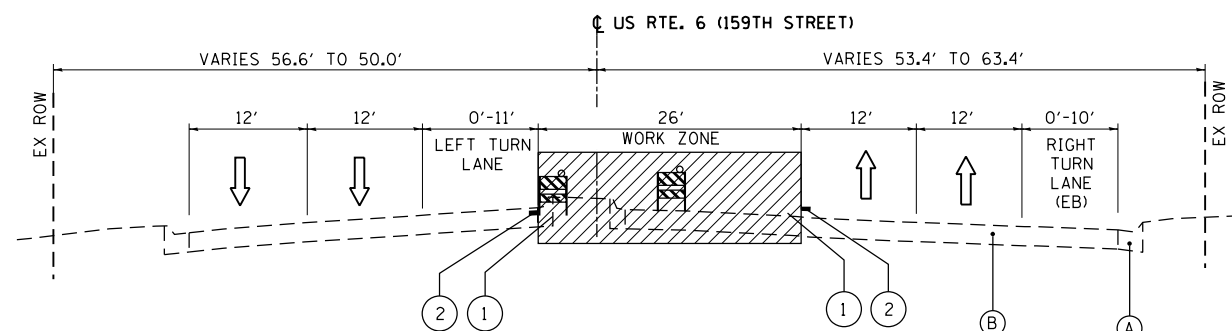
STA. 245+28 TO STA. 254+37
(LOOKING EAST)



STAGE I - M.O.T. TYPICAL SECTION

IL ROUTE 83

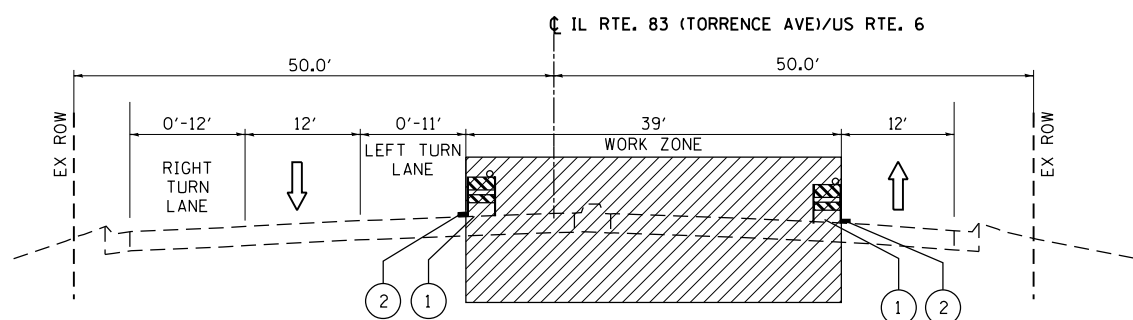
STA. 4+55 TO STA. 10+00
(LOOKING NORTH)



STAGE II - M.O.T. TYPICAL SECTION

U.S. ROUTE 6

STA. 254+37 TO STA. 258+73.5
(LOOKING EAST)



STAGE II - M.O.T. TYPICAL SECTION

IL ROUTE 83

STA. 10+00 TO STA. 16+01.3
(LOOKING NORTH)

LEGEND

- ① TYPE II BARRICADE OR DRUM WITH STEADY BURN MONO-DIRECTIONAL LIGHT
- ② TEMPORARY PAVEMENT MARKING - LINE 4" (YELLOW)
- ← DIRECTION OF TRAFFIC
- ▨ WORK ZONE

NOTES

1. PRIOR TO INSTALLING POST MOUNTED SIGNS, THE CONTRACTOR SHALL CONTACT J.U.L.I.E. AND MEADE ELECTRIC FOR LOCATES.
2. SEE STAGING PLAN AND STANDARD 701701 FOR ADDITIONAL INFORMATION.

FILE NAME = \$FILEL\$

SHT.PLAN

USER NAME = \$USER\$	DESIGNED - BFH	REVISED -
DRAWN - BFH	CHECKED - BA	REVISED -
PLOT SCALE = \$SCALE\$	DATE - 1/31/14	REVISED -
PLOT DATE = \$DATE\$		

**STATE OF ILLINOIS
DEPARTMENT OF TRANSPORTATION**

**SUGGESTED MAINTENANCE OF TRAFFIC - TYPICAL SECTIONS
US RTE. 6 (159TH STREET) AND IL RTE. 83 (TORRENCE AVENUE)**

SCALE: SHEET 1 OF 1 SHEETS STA. TO STA.

F.A.P. RTE.	SECTION	COUNTY	TOTAL SHEETS	SHEET NO.
351	539N-1	COOK	49	17
CONTRACT NO. 60W90				
ILLINOIS FED. AID PROJECT				