

F.A.P. RTE.	SECTION	COUNTY	TOTAL SHEETS	SHEET NO.
351	539N-1	COOK	49	1
ILLINOIS CONTRACT NO. 60W90				

STATE OF ILLINOIS
DEPARTMENT OF TRANSPORTATION
DIVISION OF HIGHWAYS

**PROPOSED
HIGHWAY PLANS**

FAP ROUTE 351 (US 6 / 159th STREET)

SECTION: 539N-1

AT IL 83 / TORRENCE AVENUE

TRAFFIC SIGNAL MODERNIZATION

& CHANNELIZATION

PROJECT: ACHSIP-0351(025)

COOK COUNTY

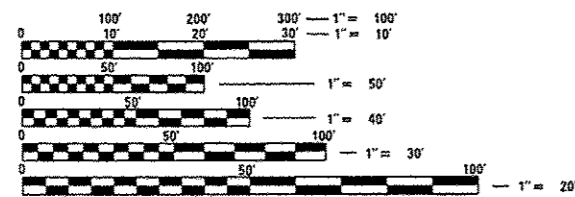
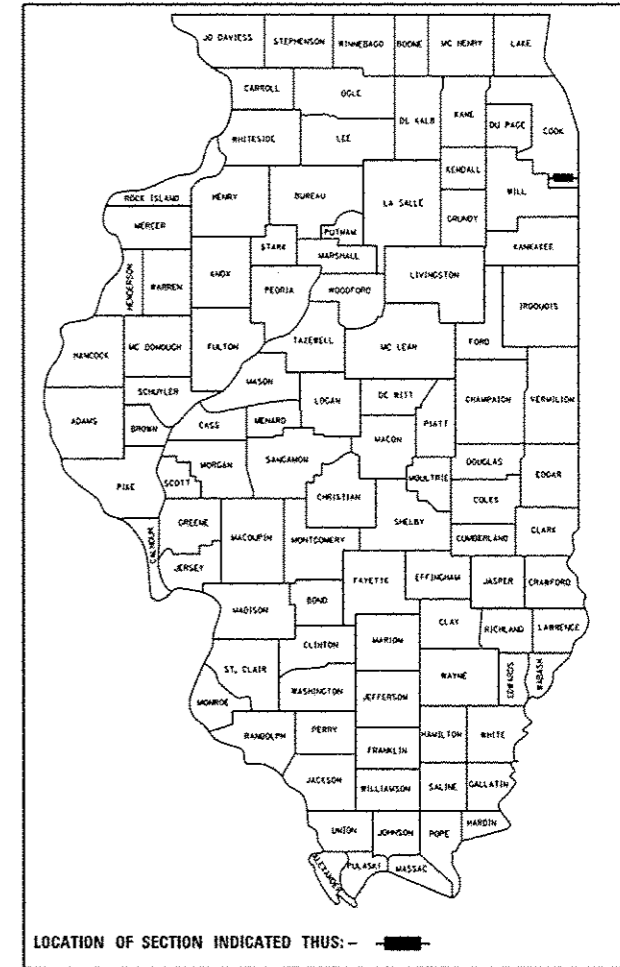
C-91-399-13

FOR INDEX OF SHEETS, SEE SHEET NO. 2

PROJECT LOCATED IN
CITY OF CALUMET CITY

FUNCTIONAL CLASSIFICATION
OTHER PRINCIPAL ARTERIAL

US RTE 6: 2013 ADT=27,500 POSTED SPEED=35 MPH
IL RTE 83: 2013 ADT=23,700 POSTED SPEED=40 MPH

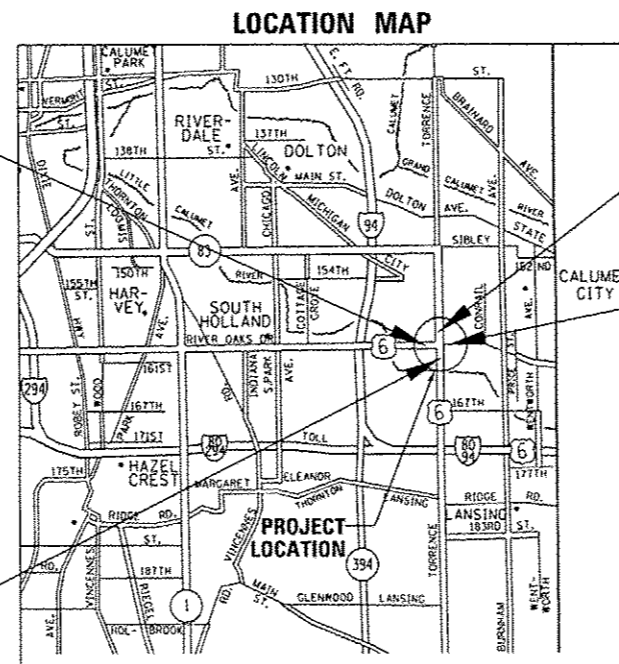


FULL SIZE PLANS HAVE BEEN PREPARED USING STANDARD ENGINEERING SCALES. REDUCED SIZED PLANS WILL NOT CONFORM TO STANDARD SCALES. IN MAKING MEASUREMENTS ON REDUCED PLANS, THE ABOVE SCALES MAY BE USED.

J.U.L.I.E.
JOINT UTILITY LOCATION INFORMATION FOR EXCAVATION
1-800-892-0123
OR 811

PROJECT BEGINS
STA. 250 + 17

PROJECT BEGINS
STA. 6 + 02



PROJECT ENDS
STA. 16 + 01.3

PROJECT ENDS
STA. 258 + 36



LICENSE EXPIRATION DATE 4/30/15
SIGNATURE: [Signature] DATE: 2/11/2014

STATE OF ILLINOIS
DEPARTMENT OF TRANSPORTATION
DIVISION OF HIGHWAYS

SUBMITTED 2-13 2014

[Signature]
DEPUTY DIRECTOR OF HIGHWAYS, REGION ENGINEER

March 21 2014
John D. Baranzelli, P.E.
ENGINEER OF DESIGN AND ENVIRONMENT

March 21 2014
Omer Osman, P.E.
DIRECTOR OF HIGHWAYS, CHIEF ENGINEER

PROJECT MANAGER: KEN ENG (IDOT) (847) 705-4247
PROJECT ENGINEER: BEHZAD AMINI (DBS) (312) 857-1006

CONTRACT NO. 60W90

GROSS LENGTH = 1818.3 FT. = 0.34 MILE
NET LENGTH = 1818.3 FT. = 0.34 MILE

DBS DB STERLIN CONSULTANTS, INC.
123 N. WACKER DRIVE SUITE 2000
CHICAGO, ILLINOIS 60606
TEL. (312) 857-1006 FAX. (312) 857-1056

**PRINTED BY THE AUTHORITY
OF THE STATE OF ILLINOIS**