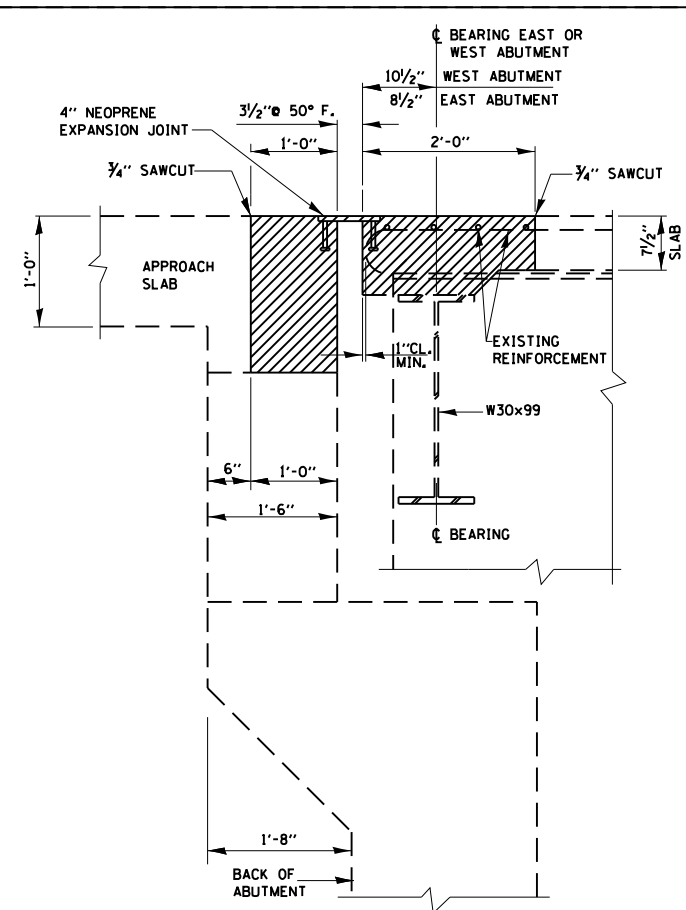
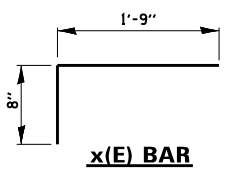
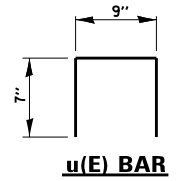
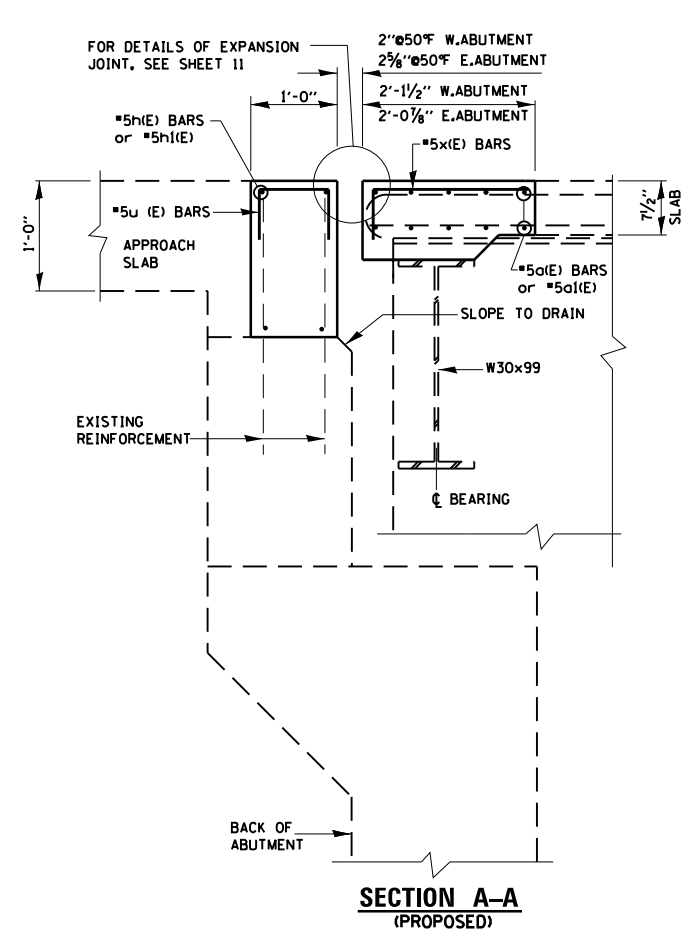


**PLAN
EAST AND WEST ABUTMENT**



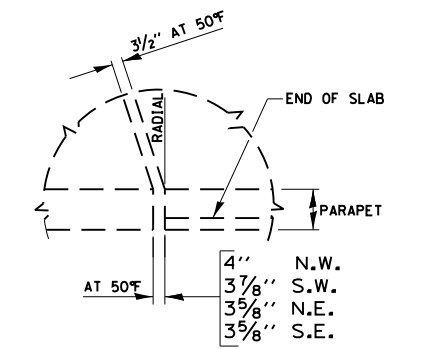
**SECTION A-A
(EXISTING)**



**SECTION A-A
(PROPOSED)**

BILL OF MATERIALS				
BAR	NO.	SIZE	LENGTH	SHAPE
a1(E)	40	#5	23'-6"	—
a1(E)	20	#5	32'-7 1/2"	—
c1(E)	24	#5	5'-8"	—
c2(E)	24	#5	2'-5"	⌒
d1(E)	24	#4	4'-9"	L
d2(E)	24	#6	3'-9"	L
d3(E)	12	#5	1'-6"	—
h(E)	16	#5	23'-6"	—
h1(E)	8	#5	32'-7 1/2"	—
u(E)	130	#5	1'-11"	□
u1(E)	20	#4	2'-0 1/2"	□
x(E)	130	#5	2'-5"	⌒
ITEM	UNIT	QUANTITY		
REINFORCEMENT BARS (EPOXY COATED)	POUND	3370		
CONCRETE REMOVAL	CU.YD.	21.5		
CONCRETE SUPERSTRUCTURE	CU.YD.	21.5		
BAR SPLICERS	EACH	56		
PERFORMED JOINT STRIP SEAL	FOOT	160		

LEGEND:
 HATCHED AREA INDICATES CONCRETE REMOVAL



**EXISTING CORNER DETAIL
(SOUTHWEST CORNER SHOWN)**