

FOR INDEX OF SHEETS, SEE SHEET NO. 2

HIGHWAY STANDARD

- 000001-06 STANDARD SYMBOLS, ABBREVIATIONS, AND PATTERNS
- 424006-01 DIAGONAL CURB RAMPS FOR SIDEWALKS
- 424011-01 CORNER PARALLEL CURB RAMPS FOR SIDEWALKS
- 606001-05 CONCRETE CURB TYPE B AND COMBINATION CONCRETE CURB AND GUTTER
- 606301-04 PC CONCRETE ISLANDS AND MEDIANS
- 701101-04 OFF-ROAD OPERATIONS, MULTILANE, 15' TO 24" FROM PAVEMENT EDGE
- 701106-02 OFF-ROAD OPERATIONS, MULTILANE, MORE THAN 15' AWAY
- 701601-09 URBAN LANE CLOSURE, MULTILANE, 1W OR 2W WITH NONTRAVERSABLE MEDIAN
- 701701-09 URBAN LANE CLOSURE, MULTILANE INTERSECTION
- 701801-05 SIDEWALK, CORNER OR CROSSWALK CLOSURE
- 701901-03 TRAFFIC CONTROL DEVICES
- 720001-01 SIGN PANEL MOUNTING DETAILS
- 805001-01 ELECTRIC SERVICE INSTALLATION DETAILS
- 814001-02 HANDHOLES
- 814006-02 DOUBLE HANDHOLES
- 857001-01 STANDARD PHASE DESIGNATION DIAGRAMS AND PHASE SEQUENCES
- 862001-01 UNINTERRUPTIBLE POWER SUPPLY (UPS)
- 873001-02 TRAFFIC SIGNAL GROUNDING AND BONDING
- 877011-05 STEEL COMBINATION MAST ARM ASSEMBLY AND POLE, 16' THROUGH 55'
- 878001-09 CONCRETE FOUNDATION DETAILS
- 880001-01 SPAN WIRE MOUNTED SIGNALS AND FLASHING BEACON INSTALLATION
- 880006-01 TRAFFIC SIGNAL MOUNTING DETAILS
- 886001-01 DETECTOR LOOP INSTALLATIONS

STATE OF ILLINOIS
DEPARTMENT OF TRANSPORTATION
DIVISION OF HIGHWAYS

PROPOSED
HIGHWAY PLANS

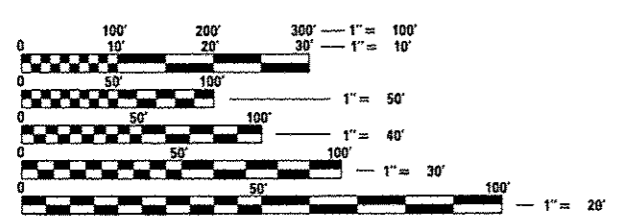
DISTRICT 1
HIGHWAY SAFETY IMPROVEMENT PROJECT
FAP ROUTE 311 (US ROUTE 34)
U.S. ROUTE 34 (OGDEN AVENUE)
AT IL ROUTE 59
PROJECT: ACHSIP-0311(048)
SECTION 2013-062TS
DUPAGE COUNTY
C-91-073-14



DESIGN DESIGNATIONS

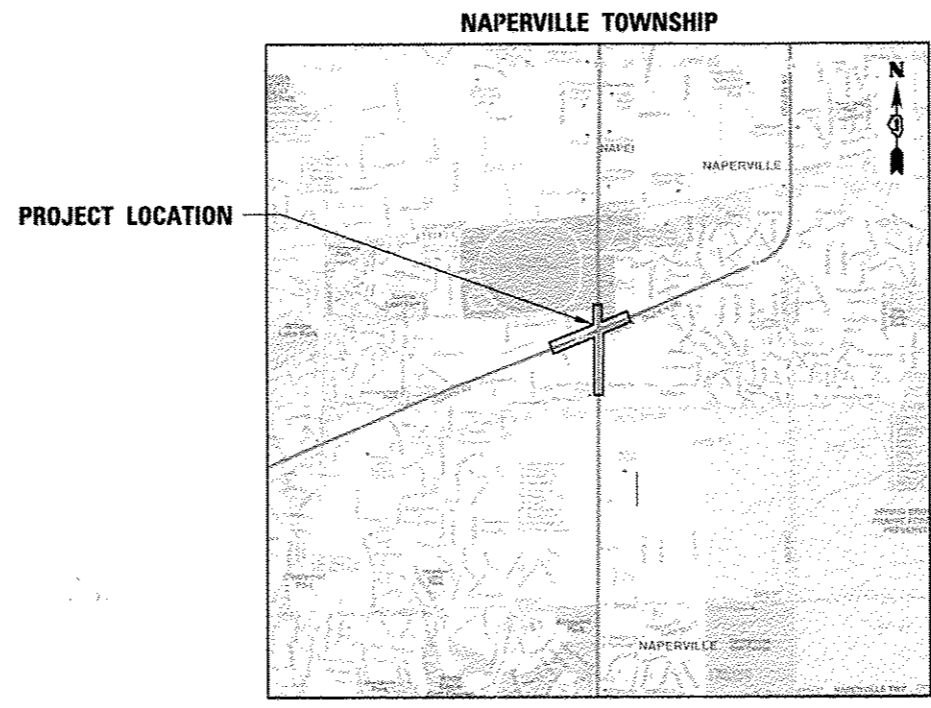
ROUTE	FUNCTIONAL CLASSIFICATION	ADT	DESIGN SPEED	POSTED SPEED
U.S. ROUTE 34	OTHER PRINCIPAL ARTERIAL	27,700 (2012)	45 MPH	40 MPH
IL ROUTE 59	STRATEGIC REGIONAL ARTERIAL (SRA)	50,500 (2012)	45 MPH	40 MPH

IMPROVEMENTS LOCATED IN THE CITY OF AURORA AND THE CITY OF NAPERVILLE



FULL SIZE PLANS HAVE BEEN PREPARED USING STANDARD ENGINEERING SCALES. REDUCED SIZED PLANS WILL NOT CONFORM TO STANDARD SCALES. IN MAKING MEASUREMENTS ON REDUCED PLANS, THE ABOVE SCALES MAY BE USED.

J.U.L.I.E.
JOINT UTILITY LOCATING INFORMATION FOR EXCAVATORS
 1-800-892-0123
 OR 811



LOCATION MAP

GROSS AND NET LENGTH = 4,531 FEET = 0.86 MILE

PROJECT ENGINEER: AMIR CUBIC / LUKASZ POCIECHA (847) 705-4419
PROJECT MANAGER: SUDUD MAHMOUD (847) 705-4420

CONTRACT NO. 60X34

PLANS PREPARED BY:

 450 E. Devon Ave., Suite 300 - Itasca, Illinois 60143
 Tel: 630.773.3900 - Fax: 630.773.3975
 www.civiltechinc.com

SIGNED
JOSEPH EMRY, P.E. IL LIC. NO. 062-057496
 EXPIRES 11-30-2015 (SHEETS 1 TO 34)
DATE 01/31/14

SIGNED
DEREK MALL, P.E. IL LIC. NO. 062-051308
 EXPIRES 11-30-2015 (SHEETS 35 TO 49)
DATE 1/31/14

STATE OF ILLINOIS
 DEPARTMENT OF TRANSPORTATION
 DIVISION OF HIGHWAYS

SUBMITTED Jan 31 20 14

 DEPUTY DIRECTOR OF HIGHWAYS, REGION ENGINEER

March 21 20 14

 acting ENGINEER OF DESIGN AND ENVIRONMENT

March 21 20 14

 DIRECTOR OF HIGHWAYS, CHIEF ENGINEER

PRINTED BY AUTHORITY
OF THE STATE OF ILLINOIS