

STATE OF ILLINOIS  
DEPARTMENT OF TRANSPORTATION  
DIVISION OF HIGHWAYS  
**PROPOSED  
HIGHWAY PLANS**

F.A.I. ROUTE 57: I-57  
WEIGH STATION (SB PEOTONE)  
SECTION: (99-2TWS)PP  
WEIGH STATION PATCHING  
WILL COUNTY

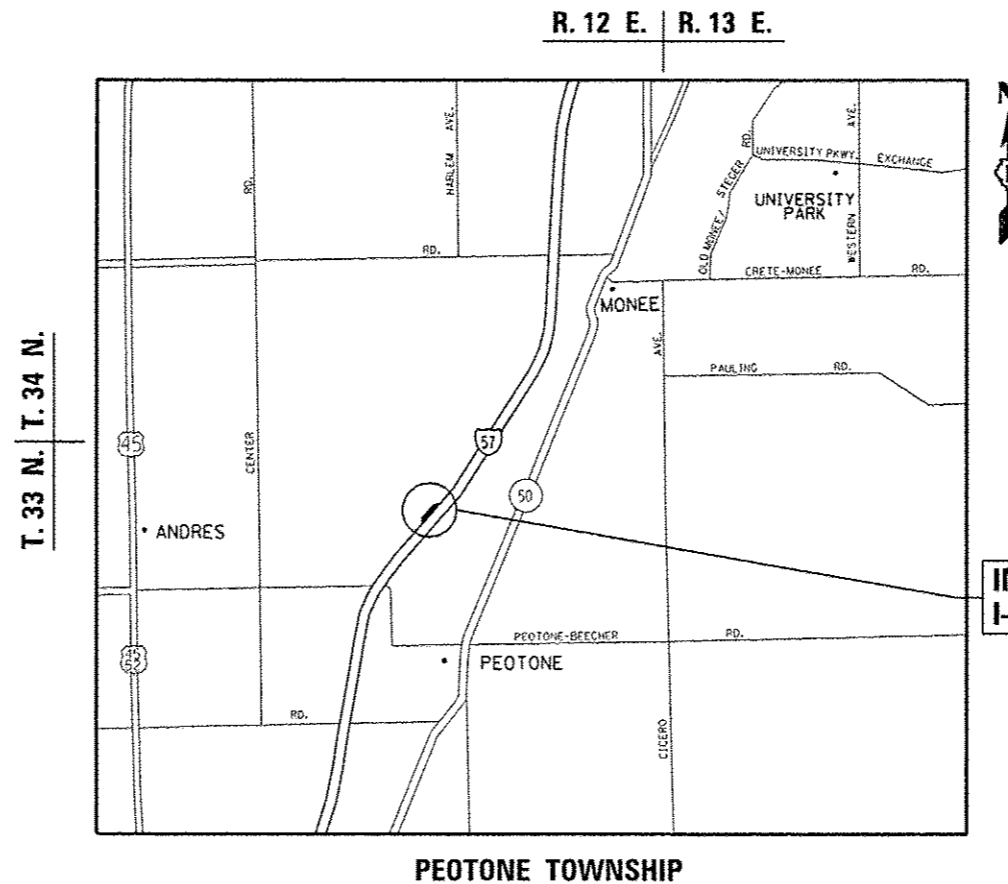
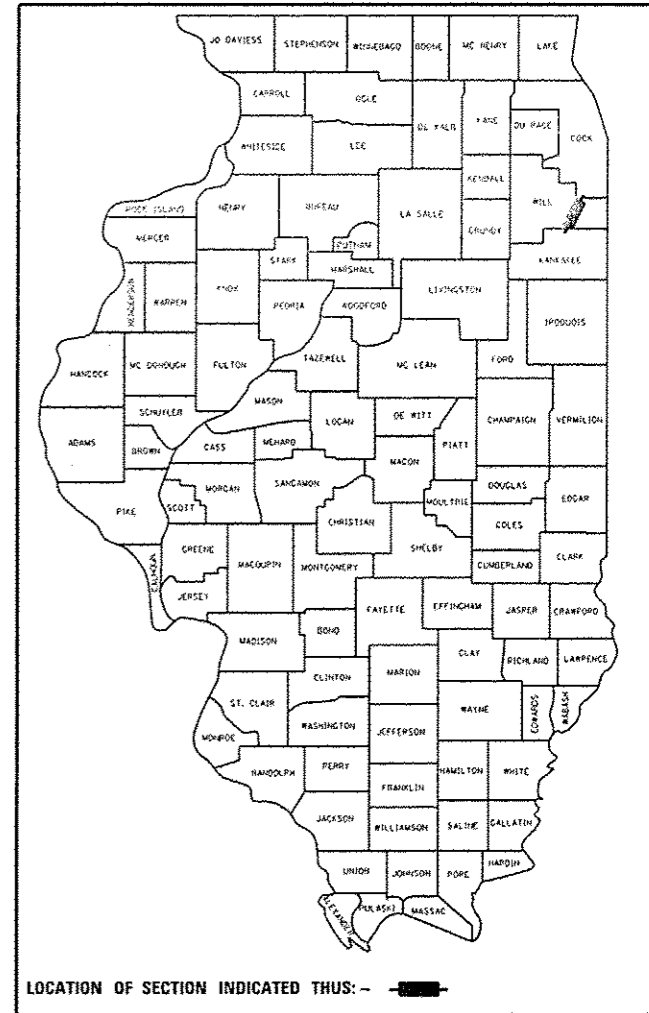
C-91-126-14

FOR INDEX OF SHEETS, SEE SHEET NO. 2

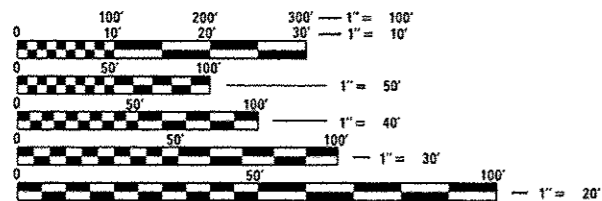
THE IMPROVEMENT IS LOCATED IN THE VILLAGE OF PEOTONE.

F.A.I. RTE. 57	SECTION 199-2TWS)PP	COUNTY WILL	TOTAL SHEETS 18	SHEET NO. 1
ILLINOIS CONTRACT NO. 60X55			*18 43 = 21	

D-91-126-14



IMPROVEMENT LOCATION  
I-57 SB PEOTONE



FULL SIZE PLANS HAVE BEEN PREPARED USING STANDARD ENGINEERING SCALES. REDUCED SIZED PLANS WILL NOT CONFORM TO STANDARD SCALES. IN MAKING MEASUREMENTS ON REDUCED PLANS, THE ABOVE SCALES MAY BE USED.

J.U.L.I.E.  
JOINT UTILITY LOCATION INFORMATION FOR EXCAVATION  
1-800-892-0123  
OR 811

PROJECT ENGINEER J. ALAIN MIDY (847) 221-3056  
PROJECT MANAGER ISSAM RAYYAN (847) 705-4178

CONTRACT NO. 60X55

GROSS & NET LENGTH = 4150 FT. = 0.786 MILE

STATE OF ILLINOIS  
DEPARTMENT OF TRANSPORTATION  
DIVISION OF HIGHWAYS

SUBMITTED 2/3 20 14

*John For Mission*  
DEPUTY DIRECTOR OF HIGHWAYS, REGION ENGINEER

March 21 20 14  
*John D. Baranzelli, P.E.*  
ENGINEER OF DESIGN AND ENVIRONMENT

March 21 20 14  
*Omer Osman, P.E.*  
DIRECTOR OF HIGHWAYS, CHIEF ENGINEER

PRINTED BY THE AUTHORITY  
OF THE STATE OF ILLINOIS

Rev. 4-9-14

**INDEX OF SHEETS**

SHEET NO.	DESCRIPTION
1.	TITLE SHEET
2.	INDEX OF SHEETS, STATE STANDARDS, AND GENERAL NOTES
3.	SUMMARY OF QUANTITIES
* 4-B.	SCHEDULE OF QUANTITIES
9-10.	TYPICAL SECTIONS
11-13.	PLAN SHEETS
14.	ENTRANCE AND EXIT RAMP CLOSURE DETAILS (TC-08)
15-16.	MULTI-LANE FREEWAY PAVEMENT MARKING (TC-12)
17.	TRAFFIC CONTROL FOR SHOULDER CLOSURES AND PARTIAL RAMP CLOSURES (TC-17)
18.	SIGNING FOR FLAGGING OPERATIONS AT WORK ZONE OPENINGS ON FREEWAYS/EXPRESSWAYS (TC-18)

⚠ \* 4-B.

⚠

18A. PAVEMENT PATCHING FOR HMA SURFACED PAVEMENT (SD-22)  
\* Added 4A, 7A.

**STATE STANDARDS**

STANDARD NO	DESCRIPTION
420001-07	PAVEMENT JOINTS
420701-02	PAVEMENT FABRIC
442101-07	CLASS B PATCHES
701411-08	LANE CLOSURE, MULTILANE AT ENTRANCE OR EXIT RAMP FOR SPEEDS ≥ 45 MPH
701428	TRAFFIC CONTROL SETUP AND REMOVAL FREEWAY/EXPRESSWAY
701901-03	TRAFFIC CONTROL DEVICES

**GENERAL NOTES:**

BEFORE STARTING ANY EXCAVATION, THE CONTRACTOR SHALL CALL "JULIE" AT 800-892-0123 OR 811 FOR FIELD LOCATIONS OF BURIED ELECTRIC, TELEPHONE AND GAS FACILITIES (48 HOUR NOTIFICATION IS REQUIRED).

THE CONTRACTOR SHALL COORDINATE CONSTRUCTION ACTIVITIES WITH UTILITY COMPANIES, AND THE VILLAGE OF PEOTONE.

THE CONTRACTOR WILL NOT BE ALLOWED TO SET UP A YARD OR FIELD OFFICE ON STATE PROPERTY WITHOUT WRITTEN PERMISSION FROM THE DEPARTMENT.

USE #8 EPOXY-COATED TIE BARS, CONFORMING TO ART. 1006.10 OF THE STANDARD SPECIFICATION, FOR ALL TIE BARS. USE THE "LONGITUDINAL CONSTRUCTION JOINT (TIE BAR GROUTED IN PLACE)" DETAIL SHOWN ON HIGHWAY STANDARD 420001 FOR ALL LONGITUDINAL JOINTS.

ALL DAMAGE TO EXISTING PAVEMENT MARKINGS OR RAISED REFLECTIVE PAVEMENT MARKERS OUTSIDE THE REMOVAL LINE SHOWN ON THE PLANS SHALL BE REPLACED AT NO ADDITIONAL COST TO THE DEPARTMENT.

BEFORE BEGINNING ANY WORK, THE CONTRACTOR SHALL RETAIN AND RECORD FOR FUTURE REFERENCE, ALL EXISTING PAVEMENT MARKING LINES (AND RAISED REFLECTIVE PAVEMENT MARKERS) IN ORDER THAT THESE LOCATIONS CAN BE RE-ESTABLISHED FOR STRIPING. EXACT LOCATIONS OF ALL PAVEMENT MARKINGS SHALL BE AS DIRECTED BY THE ENGINEER.

IT SHALL BE THE CONTRACTOR'S RESPONSIBILITY TO VERIFY ALL DIMENSIONS AND CONDITIONS EXISTING IN THE FIELD PRIOR TO CONSTRUCTION AND ORDERING OF MATERIALS.

THE CONTRACTOR SHALL CONTACT THE DISTRICT ONE TRAFFIC CONTROL SUPERVISOR AT (847) 705-4151 A MINIMUM OF 72 HOURS IN ADVANCE OF BEGINNING WORK.

THE ENGINEER SHALL CONTACT REGINA COOPER, AREA TRAFFIC FIELD ENGINEER AT (847) 705-4153 A MINIMUM OF TWO (2) WEEKS PRIOR TO THE PLACEMENT OF PERMANENT PAVEMENT MARKINGS.

THESE PLANS HAVE BEEN PREPARED FROM NOTES RECEIVED FROM THE BUREAU OF MAINTENANCE.

THE ENGINEER SHALL OBTAIN APPROVAL FROM THE DISTRICT ONE BUREAU CHIEF OF MAINTENANCE FOR ANY PROPOSED REVISIONS IN THE SCHEDULED PAVEMENT PATCHING LOCATIONS.

DO NOT SCALE PLANS FOR CONSTRUCTION DIMENSIONS.

DRILL AND GROUT SHALL BE INCLUDED IN THE COST OF TIE BAR.

⚠ Rev. 4-9-14

FILE NAME *	USER NAME * pyrcanowski	DESIGNED -	REVISED -	<b>STATE OF ILLINOIS DEPARTMENT OF TRANSPORTATION</b>	<b>INDEX OF SHEETS, STATE STANDARDS, AND GENERAL NOTES</b>				P.A.L. RTE.	SECTION	COUNTY	TOTAL SHEETS	SHEET NO.
cs:\pwork\pwork\pyrcanowski\037842	D112614-shl-plan.dgn	DRAWN -	REVISED -		57	(S9-2)WSIPP	WILL	18	2				
Default	PLOT SCALE = 1/8"=1'-0"	CHECKED -	REVISED -		CONTRACT NO. 60X55				ILLINOIS FED. AID PROJECT				
	PLOT DATE = 2/3/2014	DATE -	REVISED -		SCALE:	SHEET	OF	SHEETS	STA.	TO	STA.		

SUMMARY OF QUANTITIES			URBAN 100% STATE TOTAL QUANTITIES				CONSTRUCTION TYPE CODE 0044				SUMMARY OF QUANTITIES			CONSTRUCTION TYPE CODE				
CODE NO	ITEM	UNIT	0044								CODE NO	ITEM	UNIT	TOTAL QUANTITIES				
42001300	PROTECTIVE COAT	SO YD	811	811														
44200970	CLASS B PATCHES, TYPE II, 10 INCH	SO YD	419.8	419.8														
44200974	CLASS B PATCHES, TYPE III, 10 INCH	SO YD	107.8	107.8														
44200976	CLASS B PATCHES, TYPE IV, 10 INCH	SO YD	372.9	372.9														
44201299	DOWEL BARS 1 1/2"	EACH	1648	1648														
44213100	PAVEMENT FABRIC	SO YD	480.6	480.6														
44213200	SAW CUTS	FOOT	3842	3842														
44213202	TIE BARS 1"	EACH	177	177														
67000400	ENGINEER'S FIELD OFFICE, TYPE A	CAL MO	2	2														
67100100	MOBILIZATION	L SUM	1	1														
* 78008210	POLYUREA PAVEMENT MARKING TYPE I - LINE 4"	FOOT	390	390														
* 78008240	POLYUREA PAVEMENT MARKING TYPE I - LINE 8"	FOOT	390	390														
x7011015	TRAFFIC CONTROL AND PROTECTION (EXPRESSWAYS)	L SUM	1	1														
13 40603595	POLYMERIZED HOT-MIX ASPHALT SURFACE COURSE, MIX "F", N90	TON	17	17														
78000500	THERMOPLASTIC PAVEMENT MARKING-LINE 8"	FOOT	51	51														
X4060110	BITUMINOUS MATERIALS (PRIME COAT)	POUND	21	21														

\* Specialty Item

Rev. 4-9-14

FILE NAME *	USER NAME * pyzranowski	DESIGNED -	REVISOR -	STATE OF ILLINOIS DEPARTMENT OF TRANSPORTATION	SUMMARY OF QUANTITIES				F.A.I. RTE.	SECTION	COUNTY	TOTAL SHEETS	SHEET NO.
DATE	DATE	DRAWN -	REVISOR -						57	199-27WSIPP	WILL	18	3
PLOT SCALE * 1/2" = 1'	PLOT DATE * 2/3/2014	CHECKED -	REVISOR -						CONTRACT NO. 60X55				
		DATE	REVISOR -						FED. ROAD DIST. NO. 1 ILLINOIS FED. AID PROJECT				

PATCHING SCHEDULE  
FOR CLASS B PATCHES

STATION	DIRECTION	LANE	LENGTH (ft)	WIDTH (ft)	PATCH AREA				DOWEL BARS 1 1/2" 44201299 (Each)	SAW CUTS 44213200 (ft)	TIE BARS 1" 44213202 (Each)	PAVEMENT FABRIC 44213100 (sq. yd)
					TYPE I (sq. yd)	TYPE II (sq. yd)	TYPE III (sq. yd)	TYPE IV (sq. yd)				
1104+82	SB	RAMP	6	14	0.0	9.3	0.0	0.0	24	54.0	0	0.0
1104+61	SB	RAMP	8	14	0.0	12.4	0.0	0.0	24	58.0	0	0.0
1104+47	SB	RAMP	15	14	0.0	0.0	23.3	0.0	24	72.0	8	23.3
1104+24	SB	RAMP	8	14	0.0	12.4	0.0	0.0	24	58.0	0	0.0
EXIT RAMP LANE (HMA) SUBTOTALS					0.0	34.2	23.3	0.0	96.0	242.0	8.0	23.3

Added Sheet 4-9-14

FILE NAME * c:\pwwork\psidot\pyrzanowski\10837042	USER NAME * pyrzanowski	DESIGNED - -	REVISIED - -	<b>STATE OF ILLINOIS DEPARTMENT OF TRANSPORTATION</b>	<b>PATCHING SCHEDULE EXIT RAMP TO WEIGH STATION (HMA)</b>				F.A.J. RTE. 57	SECTION 199-21WSIPP	COUNTY WILL	TOTAL SHEETS 18	SHEET NO. 4A
Default	VD112614-shit-plan.dgn	DRAWN - -	REVISIED - -		SCALE:	SHEET	OF	SHEETS	STA.	TO STA.	CONTRACT NO. 60X55 ILLINOIS FED. AID PROJECT		
	PLOT SCALE * 100.0000' / in.	CHECKED - -	REVISIED - -										
	PLOT DATE * 3/28/2014	DATE - -	REVISIED - -										

PATCHING SCHEDULE  
FOR CLASS B PATCHES

STATION	DIRECTION	LANE	LENGTH (ft)	WIDTH (ft)	PATCH AREA				DOWEL BARS 1 1/2" 44201299 (Each)	SAW CUTS 44213200 (ft)	TIE BARS 1" 44213202 (Each)	PAYEMENT FABRIC 44213100 (sq. yd)
					TYPE I (sq. yd)	TYPE II (sq. yd)	TYPE III (sq. yd)	TYPE IV (sq. yd)				
1076+59	SB	RAMP	6	24	0.0	0.0	16.0	0.0	44	84.0	0	16.0
1074+50	SB	RAMP	8	24	0.0	0.0	16.0	0.0	44	84.0	0	16.0
ENTRANCE RAMP LANE (HMA) SUBTOTALS					0.0 (sq. yd)	0.0 (sq. yd)	32.0 (sq. yd)	0.0 (sq. yd)	88.0 (Each)	168.0 (ft)	8.0 (Each)	32.0 (sq. yd)

*Added Sheet 4-9-14*

FILE NAME *	USER NAME * pyzranowski	DESIGNED -	REVISED -	<b>STATE OF ILLINOIS DEPARTMENT OF TRANSPORTATION</b>	<b>PATCHING SCHEDULE ENTRANCE RAMP TO I-57 (HMA)</b>				F.A.I. RTE. 57	SECTION 199-2T#SIPP	COUNTY WILL	TOTAL SHEETS 18	SHEET NO. 7A
c:\pwork\psidot\pyzranowski\037042	DI12614-ent-plan.dgn	DRAWN -	REVISED -		SCALE:	SHEET	OF	SHEETS	STA.	TO STA.	<b>CONTRACT NO. 60X55</b>		
Default	PLOT SCALE * 100.0000' / in.	CHECKED -	REVISED -		ILLINOIS FED. AID PROJECT								
	PLOT DATE * 3/20/2014	DATE -	REVISED -										

PATCHING SCHEDULE  
FOR CLASS B PATCHES

STATION	DIRECTION	LANE	LENGTH (ft)	WIDTH (ft)	PATCH AREA				DOWEL BARS 1 1/2" 44201299 (Each)	SAW CUTS 44213200 (ft)	TIE BARS 1" 44213202 (Each)	PAVEMENT FABRIC 44213100 (sq. yd)
					TYPE I (sq. yd)	TYPE II (sq. yd)	TYPE III (sq. yd)	TYPE IV (sq. yd)				
1093+25	SB	RAMP	6	14	0.0	9.3	0.0	0.0	24	60.0	0	0.0
BEHIND SCALE LANE SUBTOTALS					0.0	9.3	0.0	0.0	24.0	60.0	0.0	0.0

TOTAL  
CLASS B PATCHES

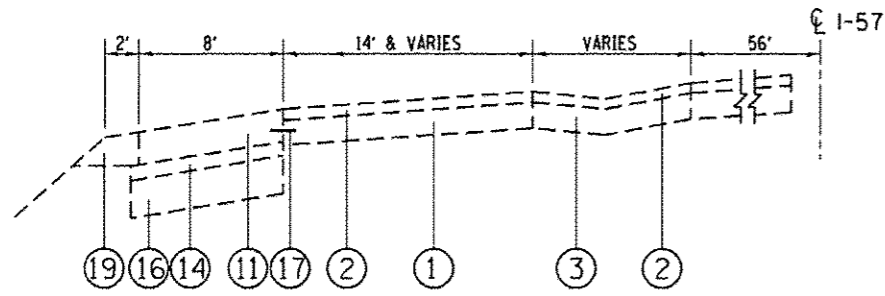
	PATCH AREA				DOWEL BARS 1 1/2" 44201299 (Each)	SAW CUTS 44213200 (ft)	TIE BARS 1" 44213202 (Each)	PAVEMENT FABRIC 44213100 (sq. yd)
	TYPE I (sq. yd)	TYPE II (sq. yd)	TYPE III (sq. yd)	TYPE IV (sq. yd)				
CLASS B PATCHING TOTALS	0.0	419.8	107.8	372.9	1648.0	3842.0	177.0	480.6

Rev. Sheet 4-9-14

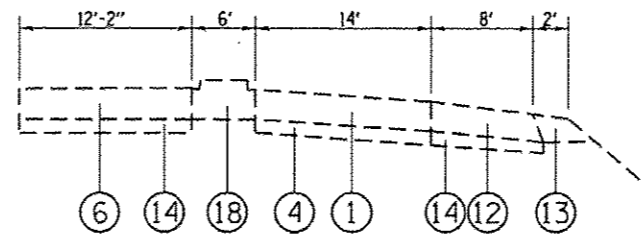
FILE NAME *	USER NAME * pyrcanewskirb	DESIGNED -	REVISED -	<b>STATE OF ILLINOIS DEPARTMENT OF TRANSPORTATION</b>	<b>PATCHING SCHEDULE BEHIND SCALE / TOTAL</b>	F.A.I. RTE.	SECTION	COUNTY	TOTAL SHEETS	SHEET NO.	
c:\pwwork\pwsdot\pyrcanewskirb\0937042	10112614-shr-plan.dgn	DRAWN -	REVISED -			57	199-21WSPP	WILL	18	8	
PLOT SCALE * 100.0000' / in.	CHECKED -	REVISED -	REVISED -			<b>CONTRACT NO. 60X55</b>					
Default	PLOT DATE * 3/28/2014	DATE -	REVISED -			(ILLINOIS) FED. AID PROJECT					

**LEGEND**

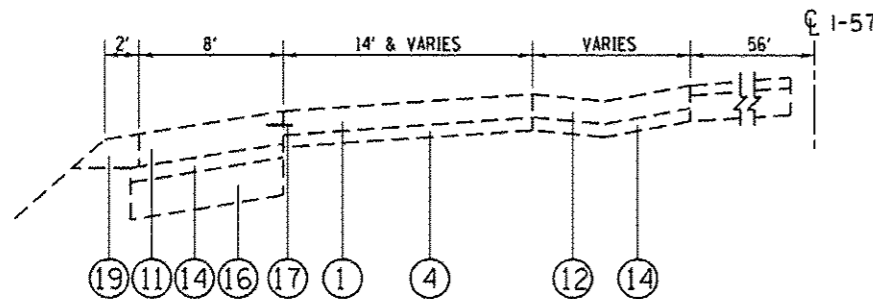
- ① EXIST. CONT. REINF. P.C.C. PAVT., 8"
- ② EXIST. HMA RESURFACING, 3/4"
- ③ EXIST. HMA SHOULDER, 8"
- ④ EXIST. STABILIZED SUB-BASE, 4"
- ⑤ EXIST. CONT. REINF. P.C.C. PAVT., 8"
- ⑥ EXIST. P.C.C. PAVT., (±) 10" (HINGE JOINTED)
- ⑦ EXIST. HMA BINDER CSE., MIX B, TYPE 1, 1 3/4"
- ⑧ EXIST. HMA BINDER CSE., MIX B, TYPE 2, 1 3/4" (SHOULDER)
- ⑨ EXIST. HMA SURFACE CSE., MIX D, CLASS 1, TYPE 1, 1 1/2"
- ⑩ EXIST. HMA SURFACE CSE., MIX D, CLASS 1, TYPE 2, 1 1/2"
- ⑪ EXIST. P.C.C. SHOULDER, (±) 10"
- ⑫ EXIST. HMA SHOULDER, 8"
- ⑬ EXIST. AGGR. SHOULDER, TYPE A, 10"
- ⑭ EXIST. HMA BASE CSE., 4"
- ⑮ EXIST. AGGR. SHOULDER, TYPE A, 11"
- ⑯ EXIST. AGGR. SUBGRADE, 12"
- ⑰ EXIST. #8 TIE BAR
- ⑱ EXIST. MEDIAN
- ⑲ EXIST. HMA SHOULDERS (±) 10"



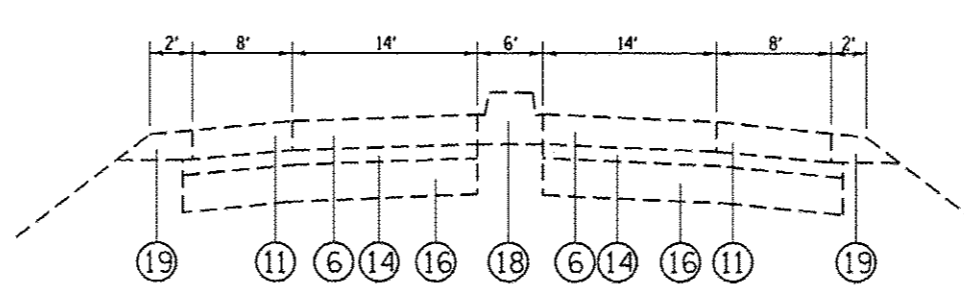
**TYPICAL SECTION**  
**I-57 SB PEOTONE WEIGH STATION**  
 STA. 1073+50 TO STA. 1080+78



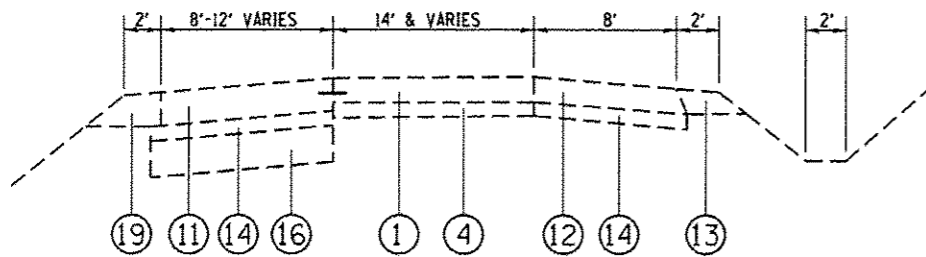
**TYPICAL SECTION**  
**I-57 SB PEOTONE WEIGH STATION**  
 STA. 1090+30 TO STA. 1093+00



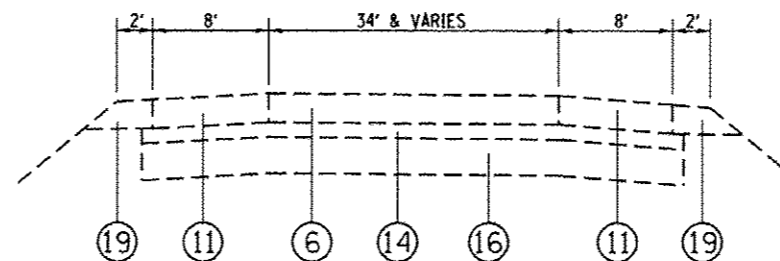
**TYPICAL SECTION**  
**I-57 SB PEOTONE WEIGH STATION**  
 STA. 1080+78 TO STA. 1082+00



**TYPICAL SECTION**  
**I-57 SB PEOTONE WEIGH STATION**  
 STA. 1093+00 TO STA. 1100+00



**TYPICAL SECTION**  
**I-57 SB PEOTONE WEIGH STATION**  
 STA. 1082+00 TO STA. 1089+00



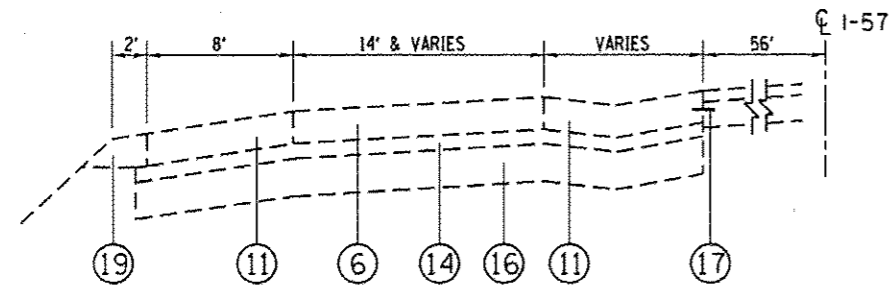
**TYPICAL SECTION**  
**I-57 SB PEOTONE WEIGH STATION**  
 STA. 1100+00 TO STA. 1105+54

Rev. Sheet 4-9-14

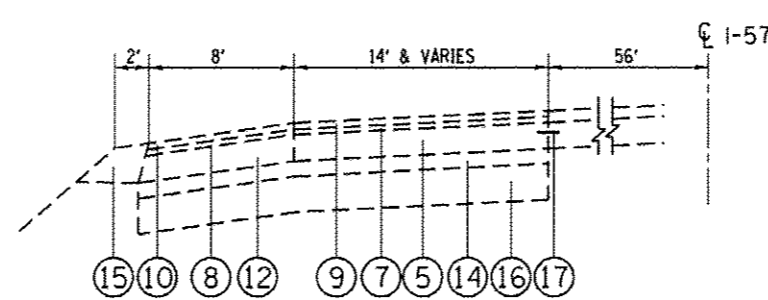
FILE NAME *	USER NAME * pyrzanoskirb	DESIGNED -	REVISED -	<b>STATE OF ILLINOIS DEPARTMENT OF TRANSPORTATION</b>	<b>TYPICAL SECTIONS I-57 SB PEOTONE WEIGH STATION</b>			F.A.I. RTE. 57	SECTION 199-2TWSIPP	COUNTY WILL	TOTAL SHEETS 18	SHEET NO. 9
cr:\pw\work\spidot\pyrzanoskirb\037042	D112614-sht-plan.dgn	DRAWN -	REVISED -		SCALE:	SHEET	OF	SHEETS	STA.	TO STA.	ILLINOIS FED. AID PROJECT CONTRACT NO. 60X55	
Default	PLOT SCALE = 100.0000' / in.	CHECKED -	REVISED -									
	PLOT DATE = 3/20/2014	DATE -	REVISED -									

**LEGEND**

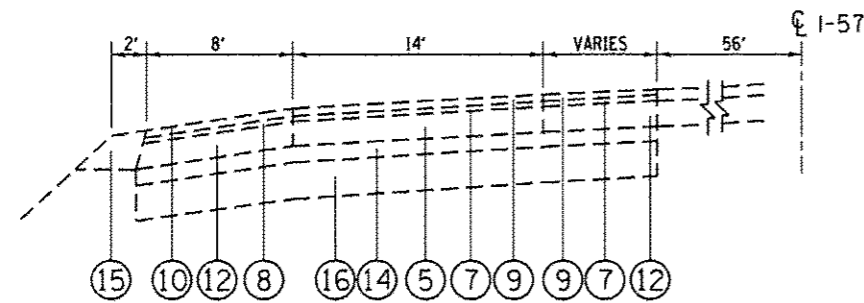
- ① EXIST. CONT. REINF. P.C.C. PAVT., 8"
- ② EXIST. HMA RESURFACING, 3/4"
- ③ EXIST. HMA SHOULDER, 8"
- ④ EXIST. STABILIZED SUB-BASE, 4"
- ⑤ EXIST. CONT. REINF. P.C.C. PAVT., 8"
- ⑥ EXIST. P.C.C. PAVT., (±) 10" (HINGE JOINTED)
- ⑦ EXIST. HMA BINDER CSE., MIX B, TYPE 1, 1 1/4"
- ⑧ EXIST. HMA BINDER CSE., MIX B, TYPE 2, 1 1/4" (SHOULDER)
- ⑨ EXIST. HMA SURFACE CSE., MIX D, CLASS 1, TYPE 1, 1 1/2"
- ⑩ EXIST. HMA SURFACE CSE., MIX D, CLASS 1, TYPE 2, 1 1/2"
- ⑪ EXIST. P.C.C. SHOULDER, (±) 10"
- ⑫ EXIST. HMA SHOULDER, 8"
- ⑬ EXIST. AGGR. SHOULDER, TYPE A, 10"
- ⑭ EXIST. HMA BASE CSE., 4"
- ⑮ EXIST. AGGR. SHOULDER, TYPE A, 11"
- ⑯ EXIST. AGGR. SUBGRADE, 12"
- ⑰ EXIST. #8 TIE BAR
- ⑱ EXIST. MEDIAN
- ⑲ EXIST. HMA SHOULDERS (±) 10"



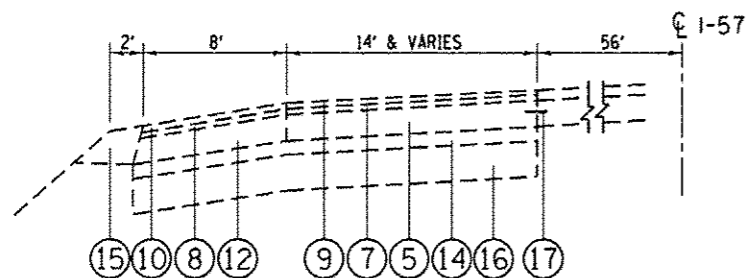
**TYPICAL SECTION**  
I-57 SB PEOTONE WEIGH STATION  
STA. 1105+54 TO STA. 1107+22



**TYPICAL SECTION**  
I-57 SB PEOTONE WEIGH STATION  
STA. 1112+00 TO STA. 1115+00



**TYPICAL SECTION**  
I-57 SB PEOTONE WEIGH STATION  
STA. 1107+22 TO STA. 1108+88



**TYPICAL SECTION**  
I-57 SB PEOTONE WEIGH STATION  
STA. 1108+88 TO STA. 1112+00

**HMA MIXTURE REQUIREMENTS**

MIXTURE TYPE	AIR VOIDS @ NDES	QUALITY MANAGEMENT PROGRAM (OMP)
POLY. HOT-MIX ASPHALT SURFACE COURSE, MIX "F", N90, 4" (IL 9.5 mm)	4% @ 90 GYR	QC/QA
OMP DESIGNATION: QUALITY CONTROL/QUALITY ASSURANCE (QC/QA)		

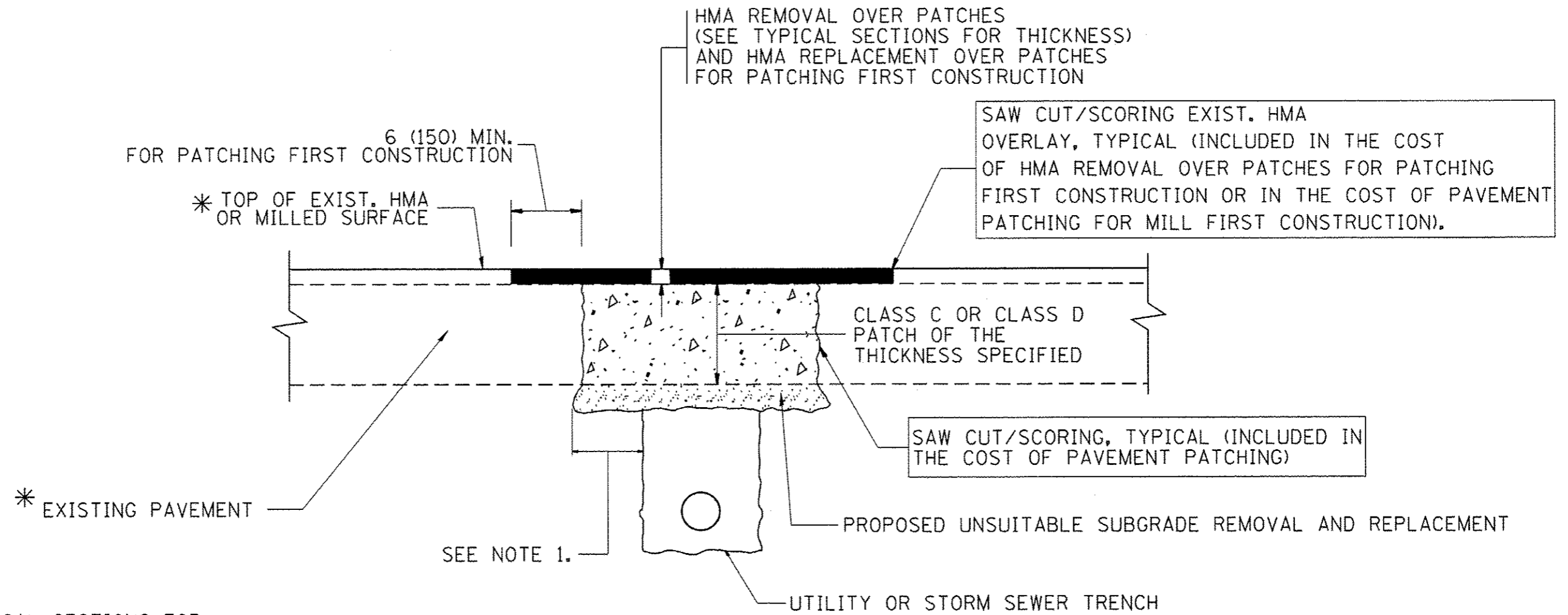
THE UNIT WEIGHT USED TO CALCULATE ALL HOT-MIX ASPHALT SURFACE MIXTURE QUANTITIES IS 112 LBS/SOYD/IN.

THE "AC TYPE" FOR POLYMERIZED HMA MIXES SHALL BE "SBS/SBR PG 76 -22" AND FOR NON-POLYMERIZED HMA THE "AC TYPE" SHALL BE "PG 64 -22" UNLESS MODIFIED BY DISTRICT ONE SPECIAL PROVISIONS. FOR USE OF RECYCLED MATERIALS SEE SPECIAL PROVISIONS. QUALITY MANAGEMENT PROGRAM (OMP) IDENTIFIES THE PARTICULAR QUALITY CONTROL SPECIFICATION THAT APPLIES TO THE HMA MIXTURE.

*Added Sheet 4-9-14*

FILE NAME *	USER NAME * pyzanoskirb	DESIGNED -	REVISED -	<b>STATE OF ILLINOIS DEPARTMENT OF TRANSPORTATION</b>	<b>TYPICAL SECTIONS</b>			F.A.I. RTE.	SECTION	COUNTY	TOTAL SHEETS	SHEET NO.
c:\pwork\pwork\pyzanoskirb\037042	D112614-shr-plan.dgn	DRAWN -	REVISED -		<b>I-57 SB PEOTONE WEIGH STATION</b>			57	(99-2TWS)PP	WILL	18	10
Default	PLOT SCALE = 100.0000' / in.	CHECKED -	REVISED -		SCALE	SHEET	OF	SHEETS	STA.	TO STA.	<b>CONTRACT NO. 60X55</b>	
	PLOT DATE = 3/20/2014	DATE -	REVISED -		ILLINOIS FED. AID PROJECT							





\* SEE TYPICAL SECTIONS FOR THICKNESS AND MATERIALS

**NOTES:**

1. THE WIDTH OF THE FULL DEPTH PATCH OVER A TRENCH SHALL BE 12 (300) WIDER ON EACH SIDE OF THE TRENCH.
2. FOR METHOD OF MEASUREMENT AND BASIS OF PAYMENT, SEE RECURRING SPECIAL PROVISION "PATCHING WITH HOT-MIX ASPHALT OVERLAY REMOVAL".

**SEQUENCE OF CONSTRUCTION (PATCHING FIRST)**

1. REMOVE THE EXISTING HMA MATERIAL OVER THE AREA TO BE PATCHED.
2. REMOVE AND REPLACE WITH CLASS C OR D PATCH.
3. REPLACE HMA MATERIAL OVER THE AREA TO BE PATCHED.

**SEQUENCE OF CONSTRUCTION (MILLING FIRST)**

1. MILL HMA FIRST IF THERE IS AT LEAST 4 1/2 INCHES OR MORE OF HMA MATERIAL ON TOP OF THE EXISTING PAVEMENT OR IF THE PAVEMENT IS FULL DEPTH HMA. A MINIMUM OF 2 INCHES OF HMA MATERIAL SHALL BE IN PLACE AFTER MILLING.
2. REMOVE AND REPLACE WITH FULL DEPTH CLASS D PATCHES TO TOP OF MILLED SURFACE.

ALL DIMENSIONS ARE IN INCHES (MILLIMETERS) UNLESS OTHERWISE SHOWN.

FILE NAME *	USER NAME * pyrczanowski	DESIGNED - R. SHAN	REVISED - A. ABBAS 04-27-98	<b>STATE OF ILLINOIS DEPARTMENT OF TRANSPORTATION</b>	<b>PAVEMENT PATCHING FOR HMA SURFACED PAVEMENT</b>	F.A.J. RTE.	SECTION	COUNTY	TOTAL SHEETS	SHEET NO.	
cd:\pe_work\p\idot\pyrczanowski\bd037042	VD112614-shs-plan.dgn	DRAWN -	REVISED - R. BORO 01-01-07			57	199-2T#SIPP	WILL	18	18A	
PLOT SCALE * 100.0000' / in.	CHECKED -	REVISED - R. BORO 09-04-07	REVISED - K. ENG 10-27-08			BD400-04 (BD-22)		CONTRACT NO. 60X55			
PLOT DATE * 3/20/2014	DATE - 10-25-94					SCALE: NONE	SHEET NO. 1 OF 1 SHEETS	STA.	TO STA.	FED. ROAD DIST. NO. 1 (ILLINOIS) FED. AID PROJECT	